

© THE BRITISH LIBRARY BOARD. ALL RIGHTS RESERVED. Licence No:8048



Historical Aerial Photography

Published 1946 - 1947

Source map scale - 1:1,250

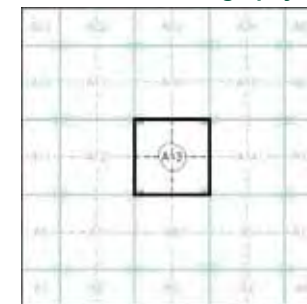
The Historical Aerial Photos were produced by the Ordnance Survey at a scale of 1:1,250 and 1:10,560 from Air Force photography. They were produced between 1944 and 1951 as an interim measure, pending preparation of conventional mapping, due to post war resource shortages. New security measures in the 1950's meant that every photograph was re-checked for potentially unsafe information with security sites replaced by fake fields or clouds. The original editions were withdrawn and only later made available after a period of fifty years although due to the accuracy of the editing, without viewing both revisions it is not easy to spot the edits. Where available Landmark have included both revisions.

© THE BRITISH LIBRARY BOARD. ALL RIGHTS RESERVED. Licence No:8048

Map Name(s) and Date(s)

Q2785SWQ2785SE	1946	1947
1:1,250	1:1,250	1:1,250
Q2785NWQ2785NE	1946	1946
1:1,250	1:1,250	1:1,250
Q2785SWQ2785SE	1946	1946
1:1,250	1:1,250	1:1,250

Historical Aerial Photography - Segment A13



Order Details

Order Number: 59147264_1_1
Customer Ref: UK14.1639
National Grid Reference: 527380, 185770
Slice: A
Site Area (Ha): 0.05
Search Buffer (m): 100

Site Details

15a, Parliament Hill, London, NW3 2SY



Tel: 0844 844 9952
Fax: 0844 844 9951
Web: www.envirocheck.co.uk



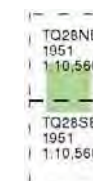
Ordnance Survey Plan

Published 1951

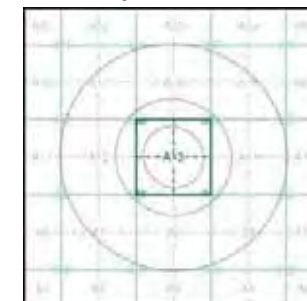
Source map scale - 1:10,000

The historical maps shown were reproduced from maps predominantly held at the scale adopted for England, Wales and Scotland in the 1840's. In 1854 the 1:2,500 scale was adopted for mapping urban areas; these maps were used to update the 1:10,560 maps. The published date given therefore is often some years later than the surveyed date. Before 1938, all OS maps were based on the Cassini Projection, with independent surveys of a single county or group of counties, giving rise to significant inaccuracies in outlying areas. In the late 1940's, a Provisional Edition was produced, which updated the 1:10,560 mapping from a number of sources. The maps appear unfinished - with all military camps and other strategic sites removed. These maps were initially overprinted with the National Grid. In 1970, the first 1:10,000 maps were produced using the Transverse Mercator Projection. The revision process continued until recently, with new editions appearing every 10 years or so for urban areas.

Map Name(s) and Date(s)



Historical Map - Slice A



Order Details

Order Number: 59147264_1_1
 Customer Ref: UK14.1639
 National Grid Reference: 527380, 185770
 Slice: A
 Site Area (Ha): 0.05
 Search Buffer (m): 1000

Site Details

15a, Parliament Hill, London, NW3 2SY



Tel: 0844 844 9952
 Fax: 0844 844 9951
 Web: www.envirocheck.co.uk



Ordnance Survey Plan

Published 1953 - 1954

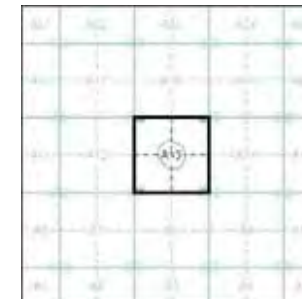
Source map scale - 1:2,500

The historical maps shown were reproduced from maps predominantly held at the scale adopted for England, Wales and Scotland in the 1840's. In 1854 the 1:2,500 scale was adopted for mapping urban areas and by 1896 it covered the whole of what were considered to be the cultivated parts of Great Britain. The published date given below is often some years later than the surveyed date. Before 1938, all OS maps were based on the Cassini Projection, with independent surveys of a single county or group of counties, giving rise to significant inaccuracies in outlying areas.

Map Name(s) and Date(s)



Historical Map - Segment A13



Order Details

Order Number: 59147264_1_1
Customer Ref: UK14.1639
National Grid Reference: 527380, 185770
Slice: A
Site Area (Ha): 0.05
Search Buffer (m): 100

Site Details

15a, Parliament Hill, London, NW3 2SY



Tel: 0844 844 9952
Fax: 0844 844 9951
Web: www.envirocheck.co.uk



Large-Scale National Grid Data

Published 1991

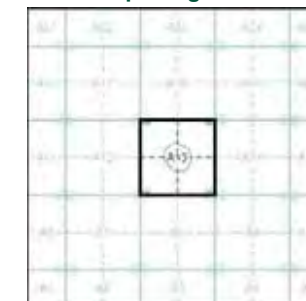
Source map scale - 1:1,250

'Large Scale National Grid Data' superseded SIM cards (Ordnance Survey's 'Survey of Information on Microfilm') in 1992, and continued to be produced until 1999. These maps were the fore-runners of digital mapping and so provide detailed information on houses and roads, but tend to show less topographic features such as vegetation. These maps were produced at both 1:2,500 and 1:1,250 scales.

Map Name(s) and Date(s)



Historical Map - Segment A13



Order Details

Order Number: 59147264_1_1
Customer Ref: UK14.1639
National Grid Reference: 527380, 185770
Slice: A
Site Area (Ha): 0.05
Search Buffer (m): 100

Site Details

15a, Parliament Hill, London, NW3 2SY



Tel: 0844 844 9952
Fax: 0844 844 9951
Web: www.envirocheck.co.uk



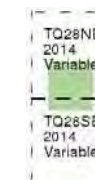
VectorMap Local

Published 2014

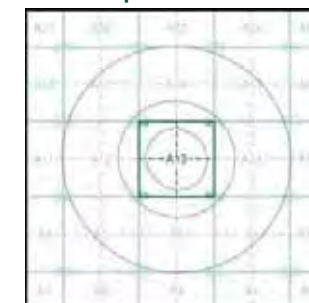
Source map scale - 1:10,000

VectorMap Local (Raster) is Ordnance Survey's highest detailed 'backdrop' mapping product. These maps are produced from OS's VectorMap Local, a simple vector dataset at a nominal scale of 1:10,000, covering the whole of Great Britain, that has been designed for creating graphical mapping. OS VectorMap Local is derived from large-scale information surveyed at 1:1250 scale (covering major towns and cities), 1:2500 scale (smaller towns, villages and developed rural areas), and 1:10 000 scale (mountain, moorland and river estuary areas).

Map Name(s) and Date(s)



Historical Map - Slice A



Order Details

Order Number: 59147264_1_1
Customer Ref: UK14.1639
National Grid Reference: 527380, 185770
Slice: A
Site Area (Ha): 0.05
Search Buffer (m): 1000

Site Details

15a, Parliament Hill, London, NW3 2SY



Tel: 0844 844 9952
Fax: 0844 844 9951
Web: www.envirocheck.co.uk