

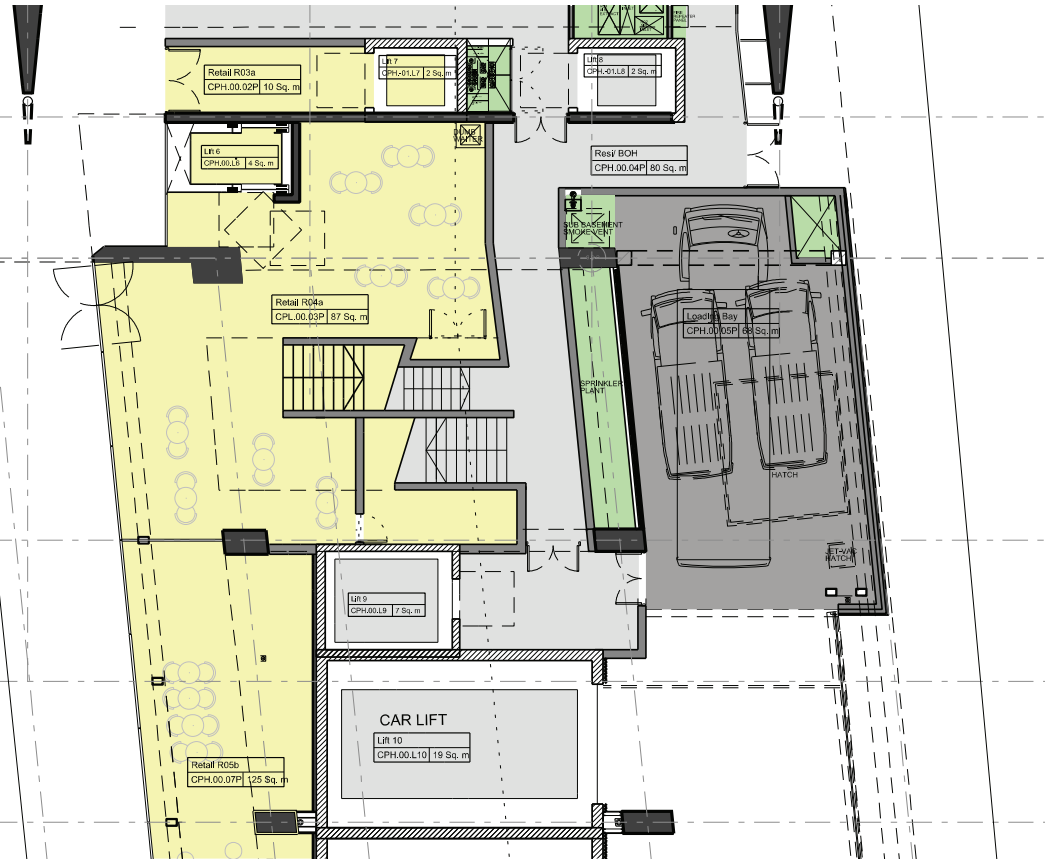
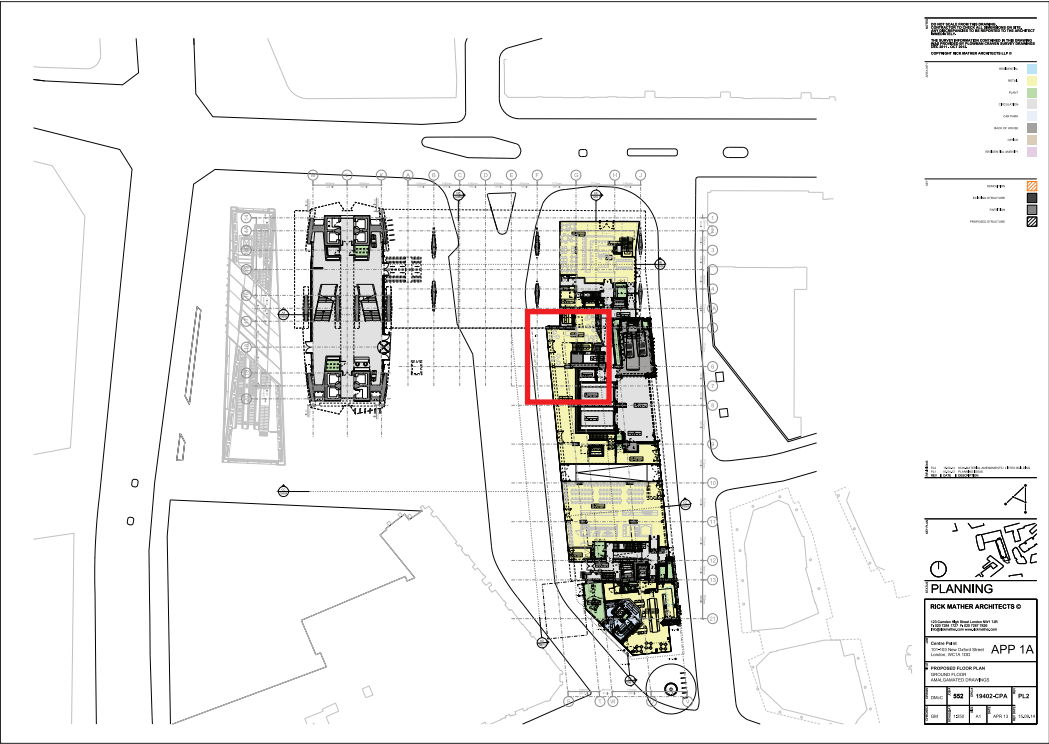
2.2.8 AMENDMENT 21: CPH

Reconfiguration of Scissor Stair 05/06
(to levels 00, 00 Mezz, 01, 01 Mezz & 02)

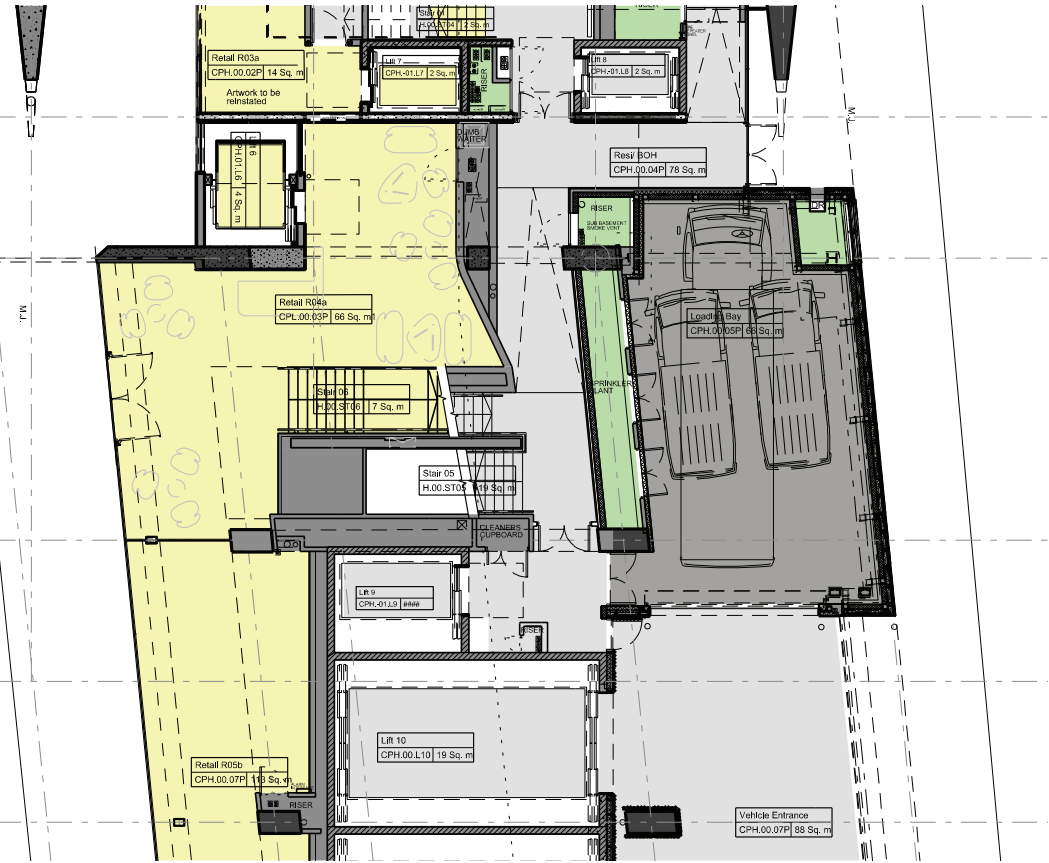
As part of the rationalisation exercise related to lift 06 the opportunity to rationalise the adjoining circulation areas was available. In particular, this meant it was possible to open up the void and reconfigure the form of the scissor stair 05 & 06. This ensured a simpler, sculptural form, providing a greater sense of void at the entrance and maximise the visual connection both across the void and between the retail units from the various floor levels and from the stair itself.

In addition, this meant there was an opportunity to reorganise the floor slab at level 01 and introduce a link bridge to form a new, more dramatic approach to retail unit R04.

We believe the changes both enhance the sculptural drama of the entrance void and increase the strong visual connections.



APPROVED PLAN
Drawing: 19402-CPA Ground Floor Plan



AMENDED PLAN
Drawing: 19402-CPA Ground Floor Plan