

## 2.2.6 AMENDMENT 16: CPH

### Glazed gate heights aligned with adjacent doors & glazed overpanel added

After detailed elevations were developed it was felt that the full height glazed gates to the East-West pedestrian link were at odds with the visual line of the glazed entrance doors elsewhere on the facade.

Further discussion with glazing suppliers also confirmed that full height doors would be technically difficult to achieve and would require a large portal frame to carry their weight. This frame would be highly visible on the West elevation and would be detrimental to the concept of a flush glazed facade.

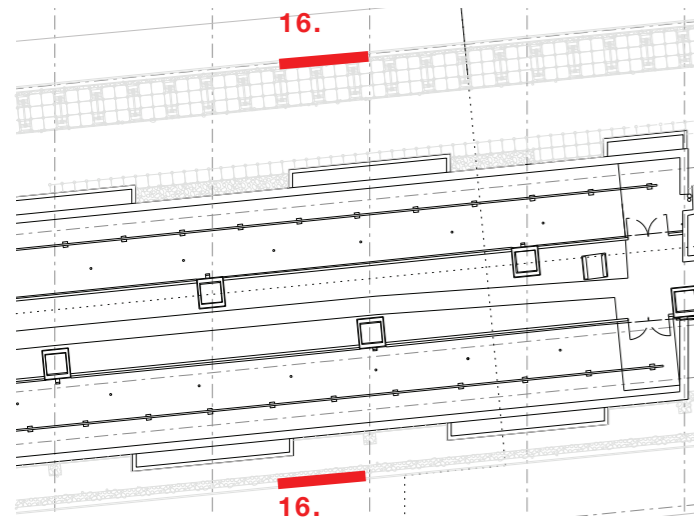
It is therefore proposed to reduce the height of these to align with the adjacent retail door heights and provide a fixed glazed overpanel up to the underside of the soffit. This reduction in size will allow the frame to be minimised, retain the flush principle of the facade and provide a consistent visual line. It will also benefit by providing a clearer, permanent area for pedestrian signage on the static overpanel above, which is not currently provided by full height opening gates.



APPROVED ELEVATION  
Drawing: 19559-CPA West Elevation



AMENDED ELEVATION  
Drawing: 19559-CPA West Elevation



APPROVED ELEVATION  
Drawing: 19557-CPA East Elevation



AMENDED ELEVATION  
Drawing: 19557-CPA East Elevation