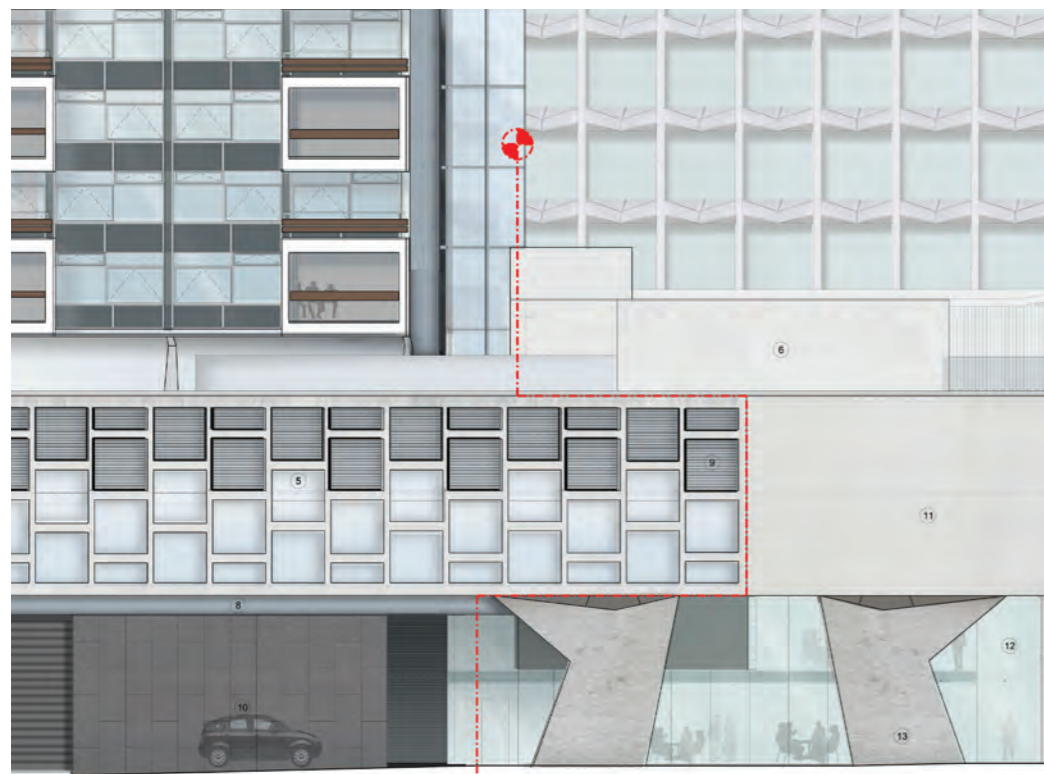
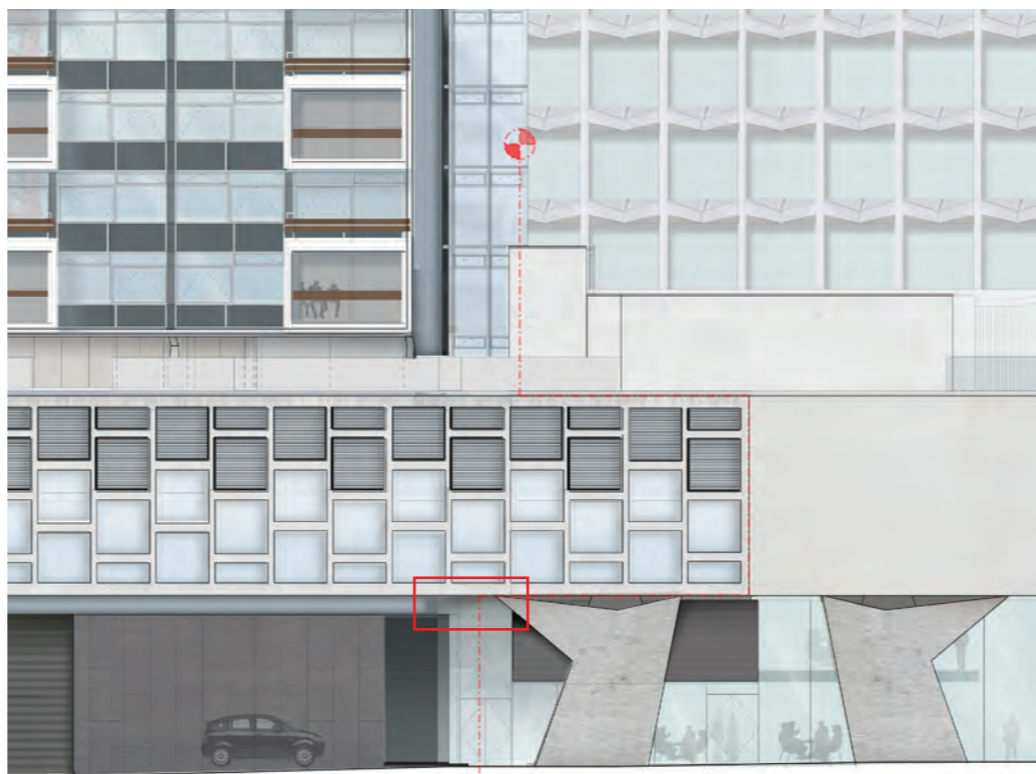


2.2.5 AMENDMENT 15: CPH



APPROVED ELEVATION
Drawing: 19556-CPA East Elevation



AMENDED ELEVATION
Drawing: 19556-CPA East Elevation

Glazing to staff exit extended to underside of CPL soffit

The permitted drawings indicate the existing stepped head detail continuing across the glazed facade above the Residential / BOH Lobby on Earnshaw Street. However, the existing facade in this area has no such detail and it is therefore proposed to omit this and extend the glazing up. We believe this will provide a more successful elevation, maximising daylight within the Lobby whilst continuing the transparency of the glazed retail facade on New Oxford Street and providing minimal visual connection with the existing CPL soffit.

