

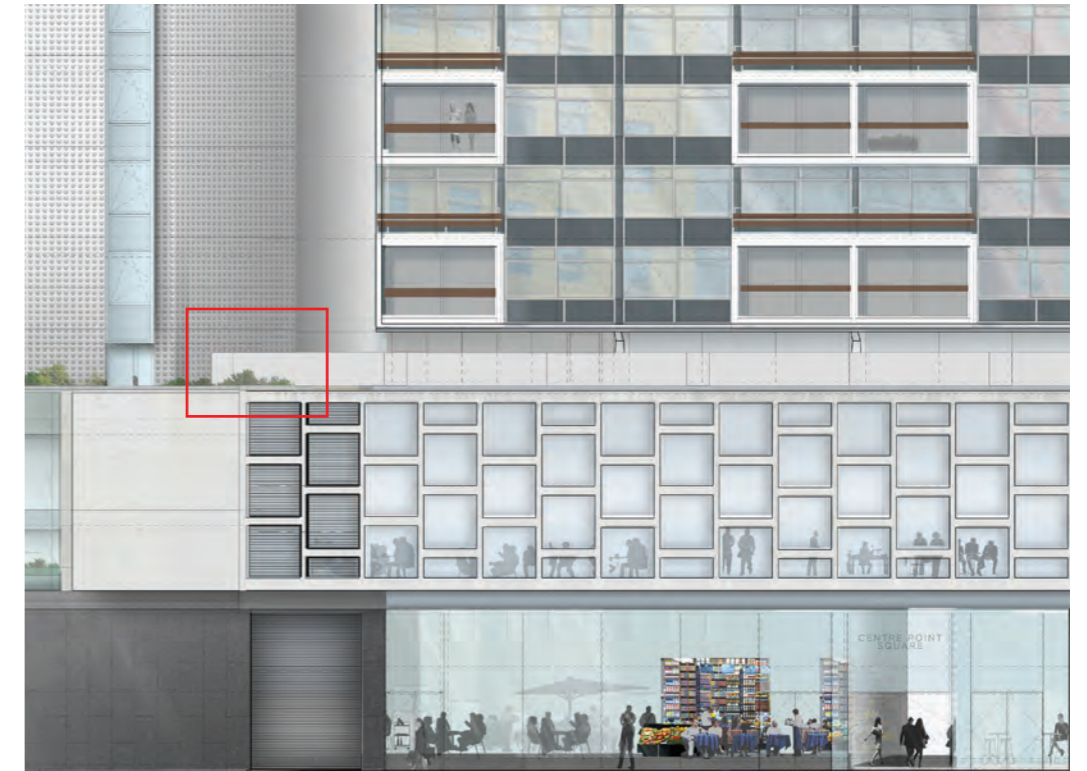
## 2.2.4 AMENDMENT 13: CPH

### East elevation corrected to show retail duct route

In the permitted drawings there is an inconsistency on the East elevation (drawing 552-19557-CPA) which does not reflect the full extent of the ductwork route shown on the approved level 02 plan. The elevation has been corrected to show the ducts continuing into the CPW plant riser area as per the plan layout.



APPROVED ELEVATION  
Drawing: 19557-CPA East Elevation



AMENDED ELEVATION  
Drawing: 19557-CPA East Elevation

