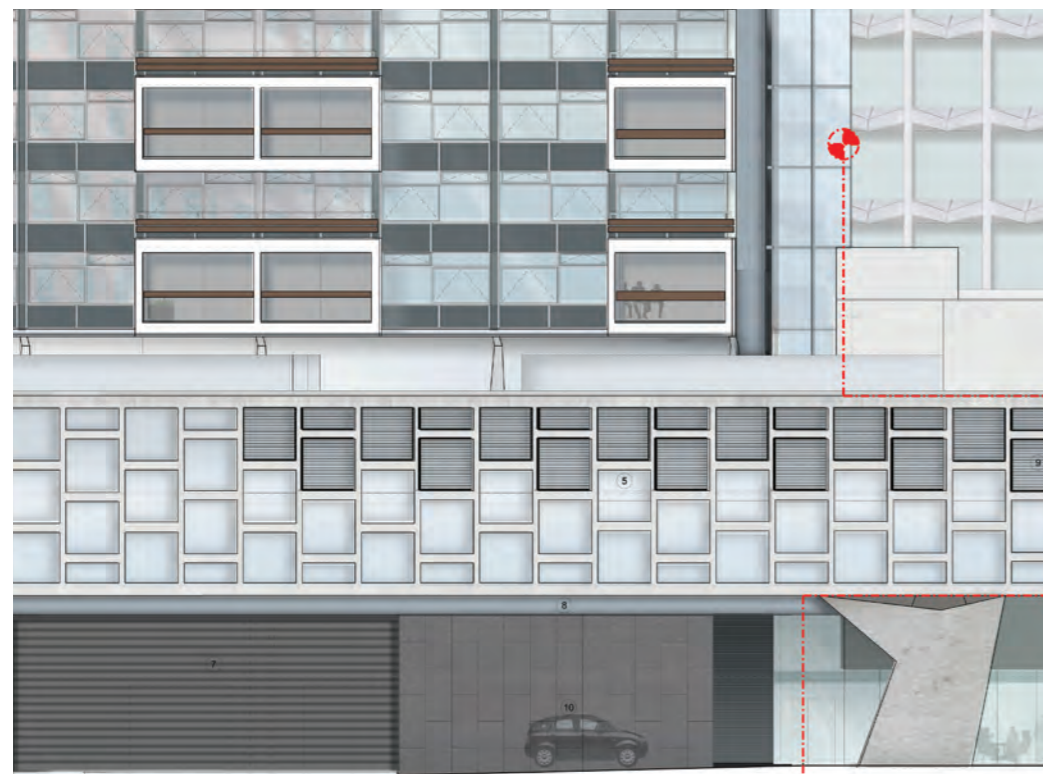


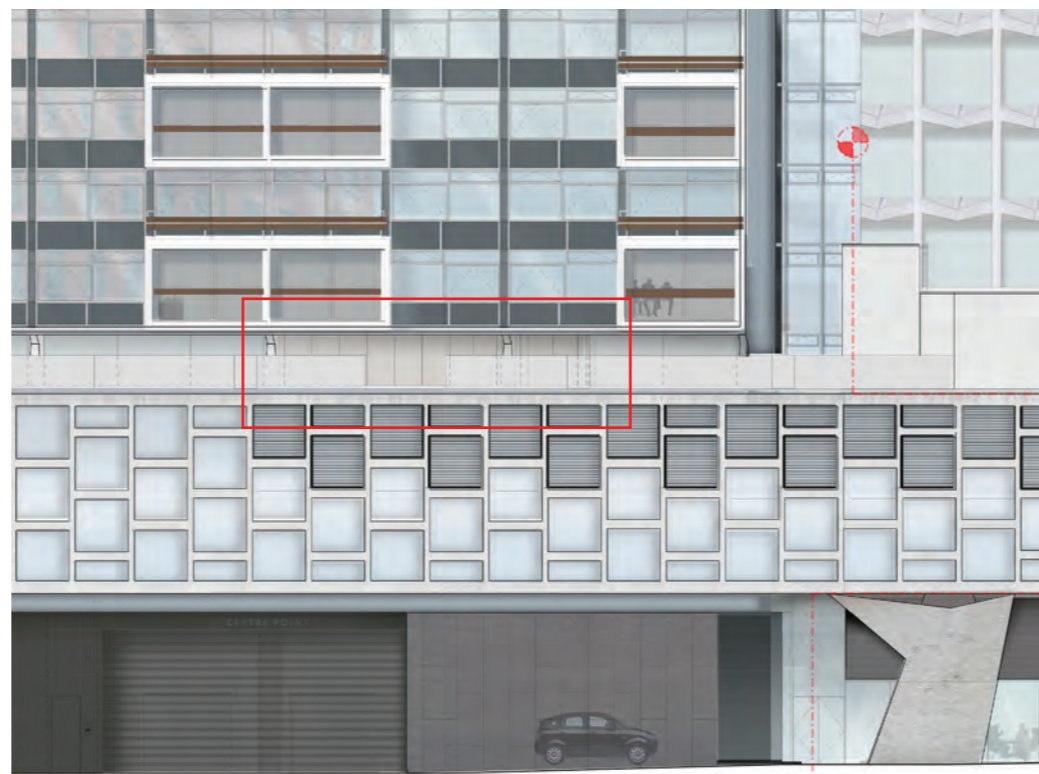
### 2.2.3 AMENDMENT 12: CPH

#### PPC metal panels to plant rooms in lieu of glazing

As the detailed design has developed it has become clear that achieving a robust, weathertight and acoustically satisfactory detail at the penetration of the ecology ducts and the clerestory glazed facade would be extremely difficult. This would run the risk of future maintenance issues and reduced acoustic performance. It is therefore proposed to minimise this by replacing the currently consented obscure glazing between gridlines U/6\*-8 & U/11-12 on the level 02 east facade with PPC metal panelling in order to better conceal the plant rooms behind and to allow satisfactory junctions to be formed which will achieve the necessary acoustic insulation requirements.



APPROVED ELEVATION  
Drawing: 19556-CPA East Elevation



AMENDED ELEVATION  
Drawing: 19556-CPA East Elevation



APPROVED ELEVATION  
Drawing: 19557-CPA East Elevation



AMENDED ELEVATION  
Drawing: 19557-CPA East Elevation

