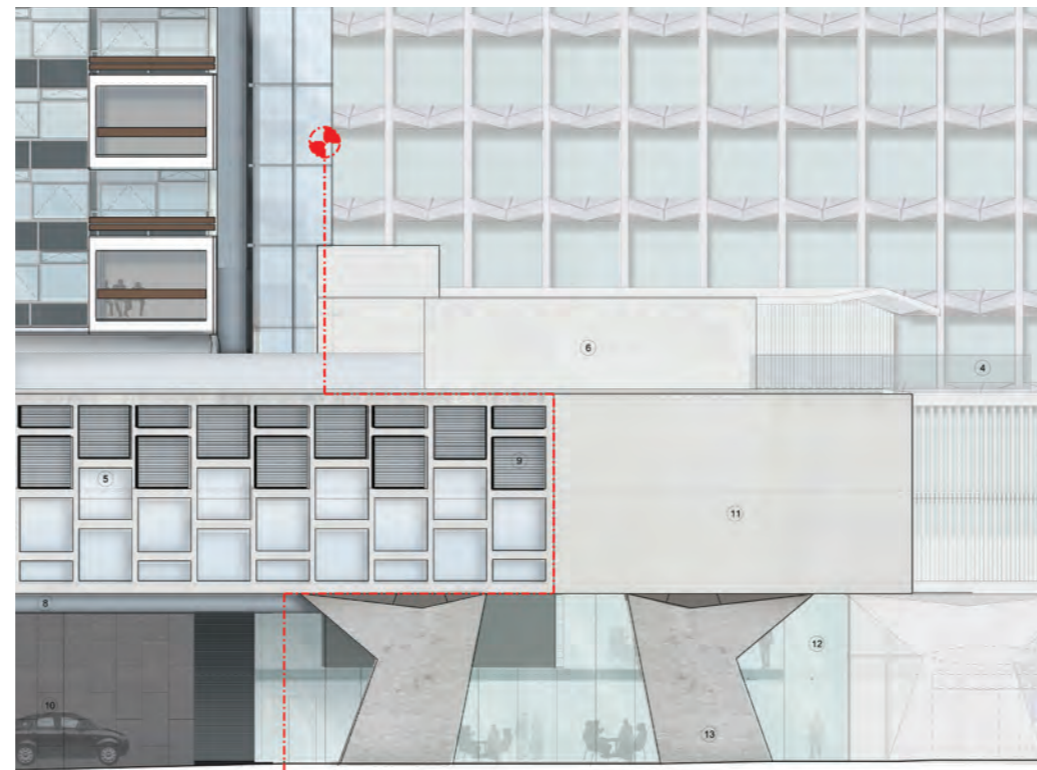


2.2.2 AMENDMENT 10: CPH

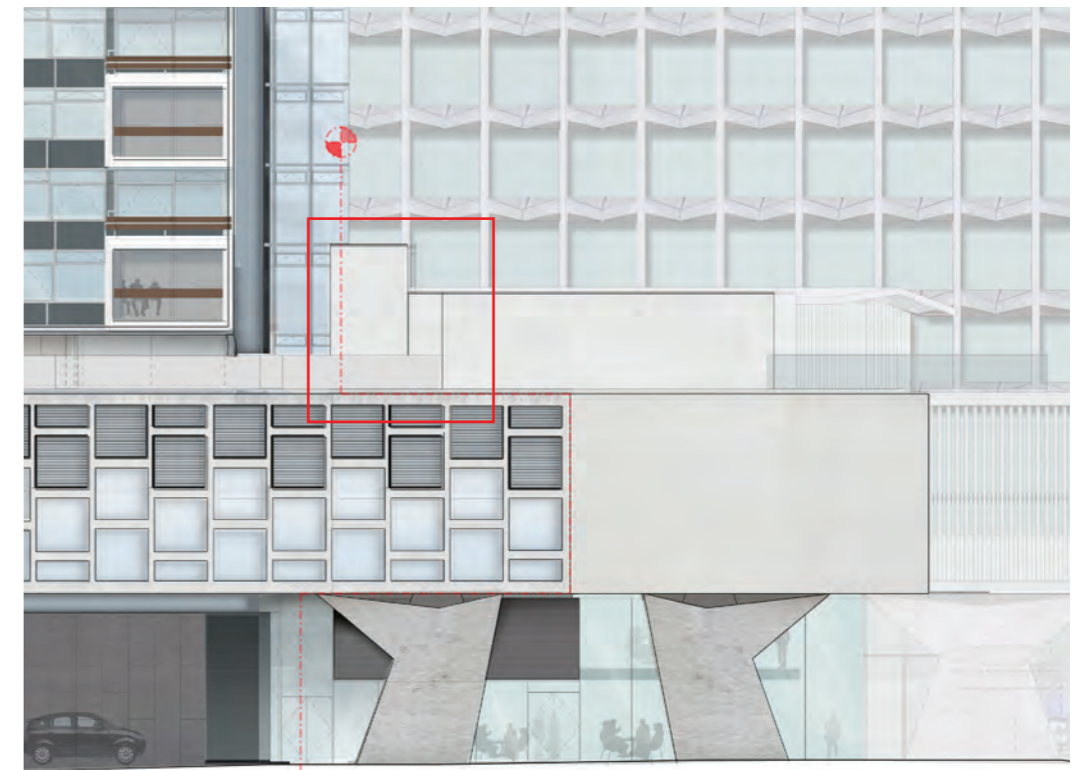
Lifts 07 & 08 realigned and cladding reconfigured

The permitted scheme contained an inconsistency between the plan layout at level 02 and the East elevation around lifts 07 & 08 at the junction with the new retail unit. There was an incorrectly noted coping line on the elevation which is to be omitted and the width of the lift shaft has been corrected to match the plan.

Additionally, the cladding face immediately adjacent to the lifts is set back to provide both a visual break between the lifts and retail unit and to conceal a necessary structural movement joint between the two structures.



APPROVED ELEVATION
Drawing: 19556-CPA East Elevation



AMENDED ELEVATION
Drawing: 19556-CPA East Elevation

