

## 2.2.1 AMENDMENT 9: CPH

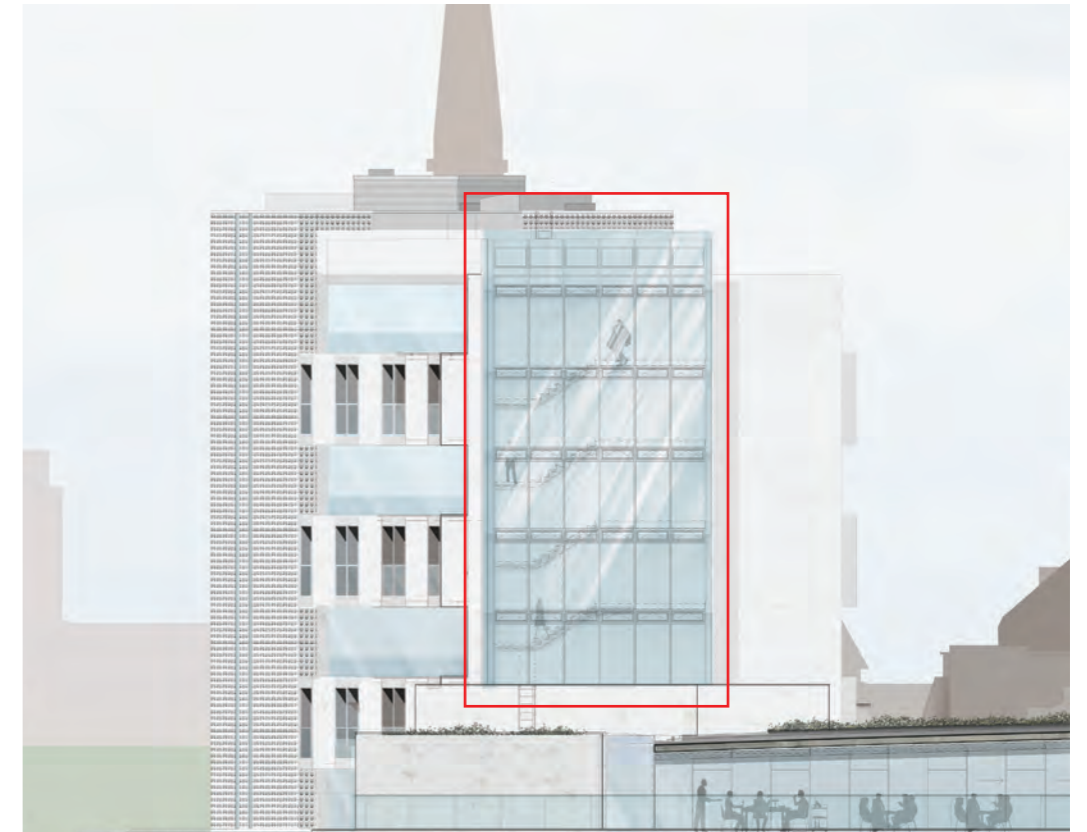
### CPH North & South stairwell cladding and rooftop balustrades reconfigured

Current planning permission is based on the existing glazing to the CPH residential block being replaced with a matching curtain walling system. This currently extends above the roof line to replace the existing glass balustrades.

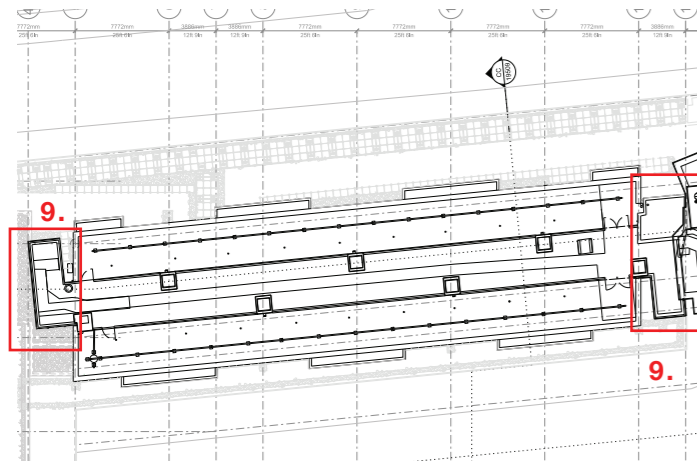
After further discussions with The 20th Century Society it was agreed that the existing North & South stairwells would benefit from a similar treatment that 'mimics' the existing configuration. This includes continuing the cladding above roof level to form glazed balustrades. The elevations have been updated to reflect this preferred configuration.



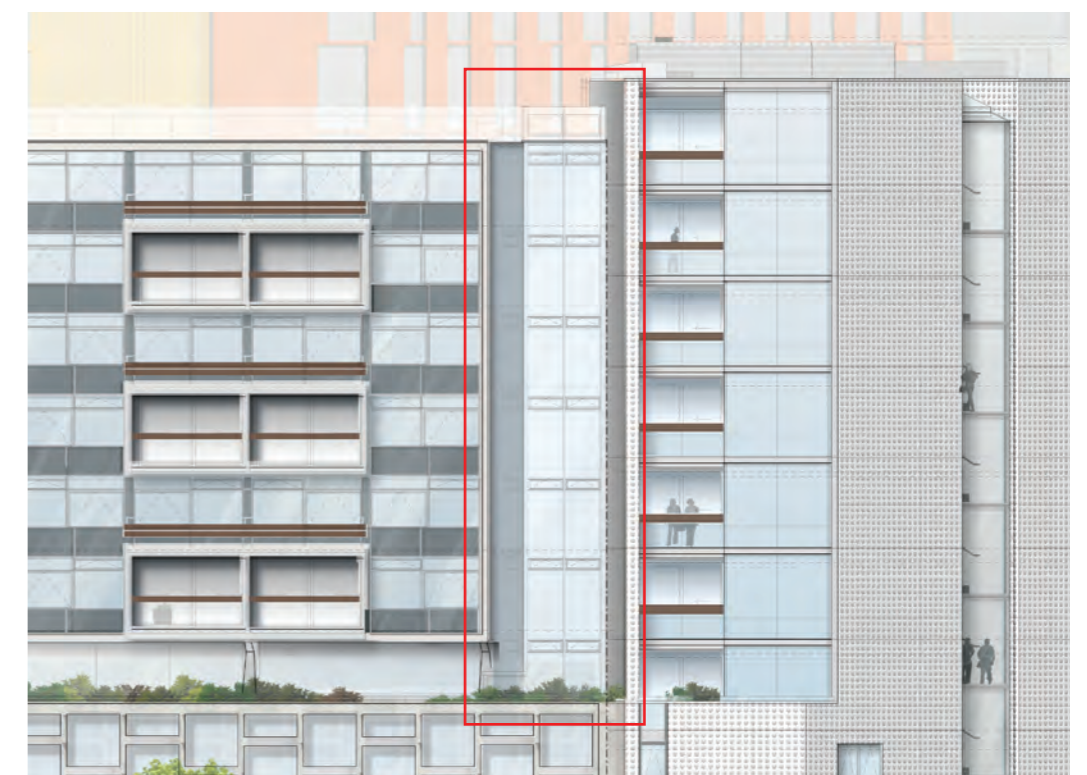
APPROVED ELEVATION  
Drawing: 19555-CPA North Elevation



AMENDED ELEVATION  
Drawing: 19555-CPA North Elevation



APPROVED ELEVATION  
Drawing: 19559-CPA West Elevation



AMENDED ELEVATION  
Drawing: 19559-CPA West Elevation