

**2.1.7 AMENDMENT 7: CPW**

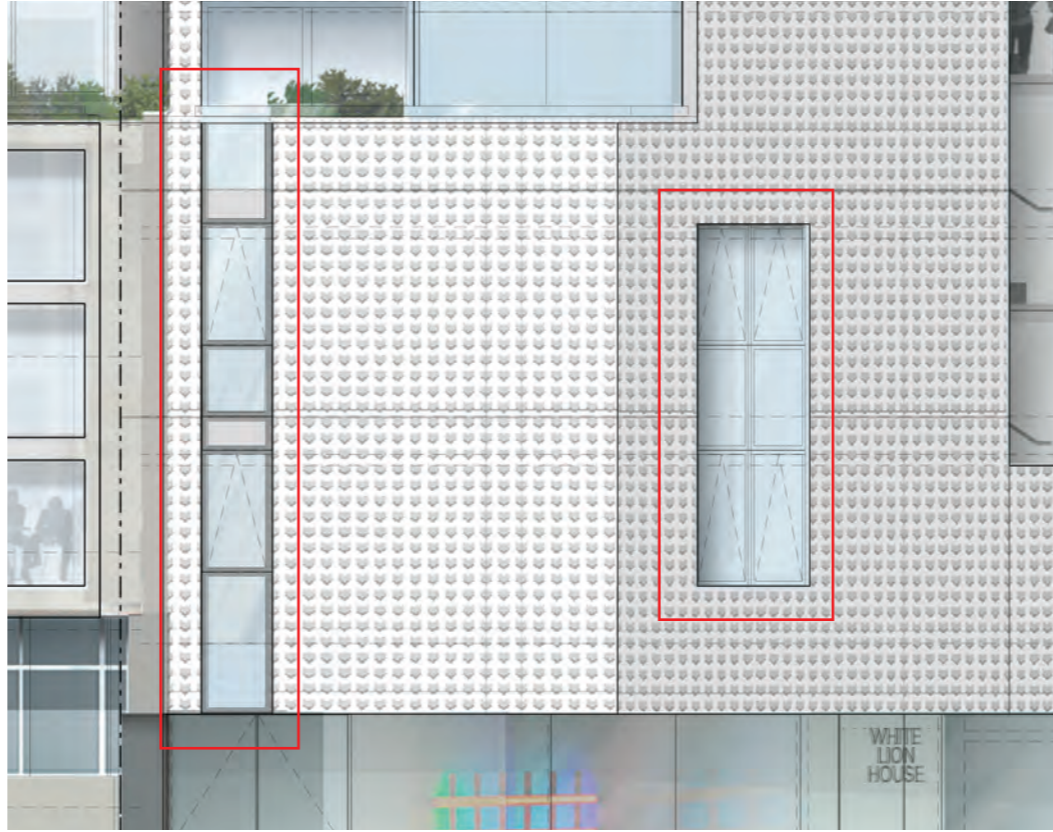
**Glazing reconfigured to CPW South-West & West elevations**

It is a mandatory requirement to provide opening windows to all apartment bedrooms. After further detailed discussions with the window suppliers it became clear that it would not be possible to achieve a full height opening window due to technical restrictions and particularly the inability to achieve necessary acoustic ratings.

It is therefore proposed to introduce a fixed glazing panel with opening lights to level 01 Mezz on the South West elevation and to the base at level 01 & 01 Mezz on the West elevation. This will ensure the glazed slot appearance is maintained whilst achieving the necessary technical performance.



APPROVED ELEVATION  
Drawing: 19559-CPA West Elevation



AMENDED ELEVATION  
Drawing: 19559-CPA West Elevation

