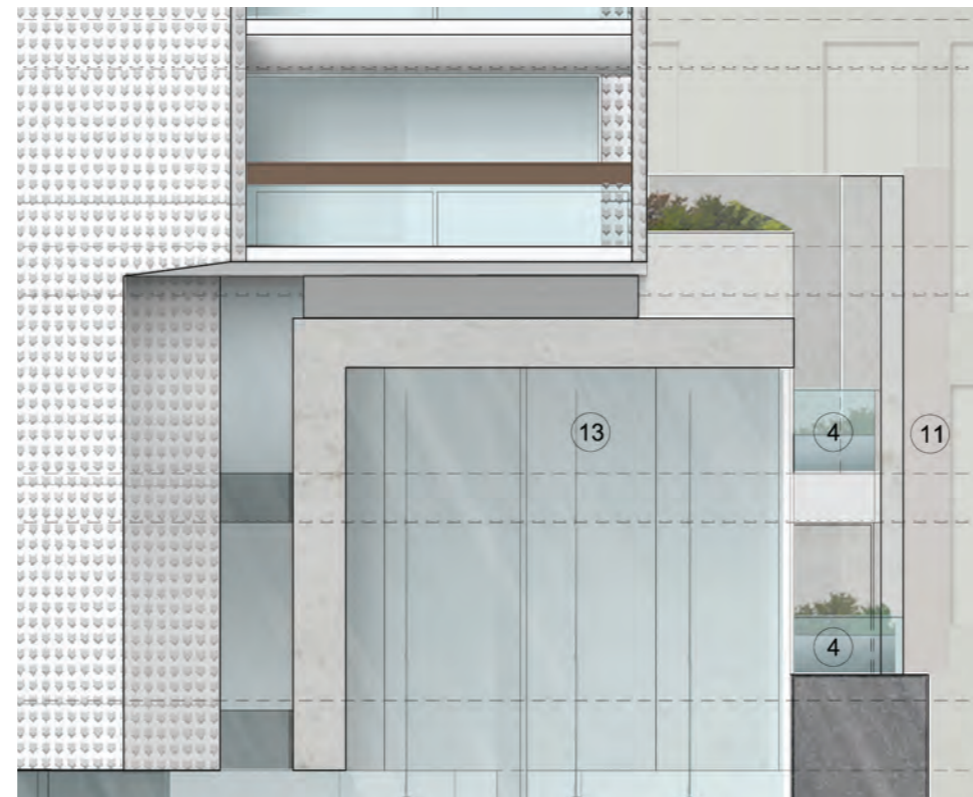


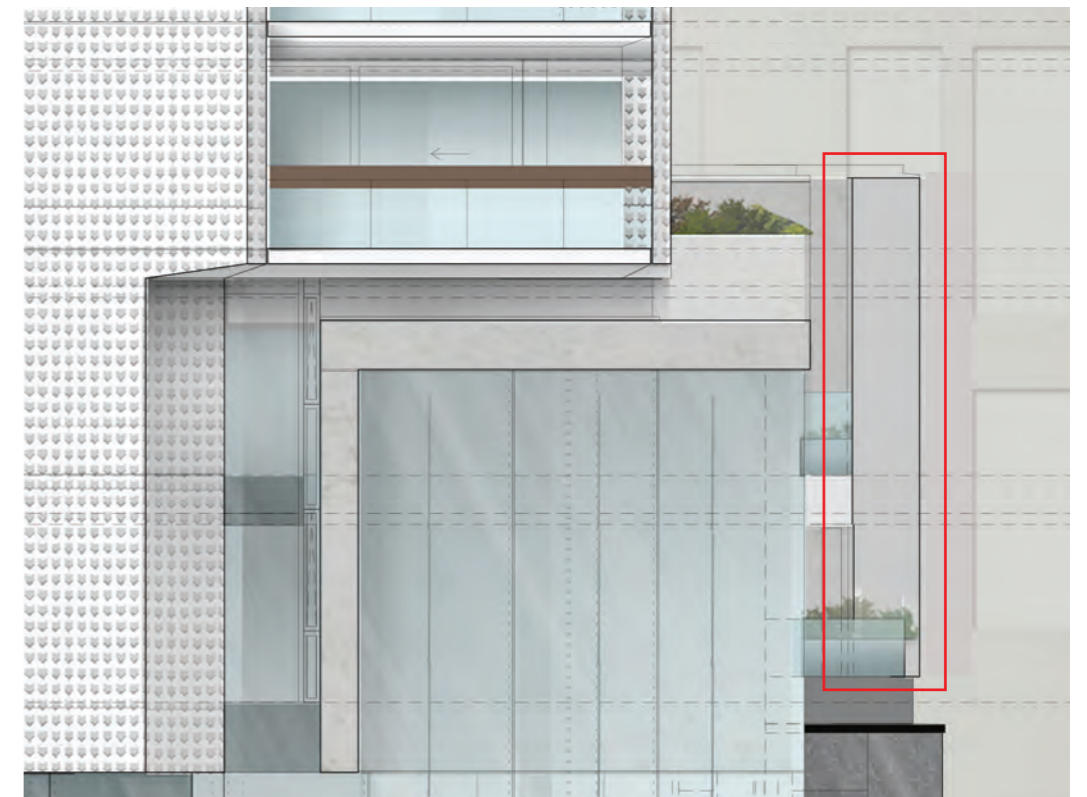
## 2.1.6 AMENDMENT 6: CPW

### Precast cladding edge extended

The balconies to the East facade currently include a storey high structural column to support the external precast concrete facade / brise soleil panels (along gridline V). These panels currently finish with an exposed end adjacent to the column. As further detailed elevations were developed it was considered that this detail would be more successful if the cladding panel was extended to wrap around and conceal the supporting structure and ensure the precast finish is more visible to the South.



APPROVED ELEVATION  
Drawing: 19558-CPA South Elevation



AMENDED ELEVATION  
Drawing: 19558-CPA South Elevation

