

2.1.5 AMENDMENT 5: CPW

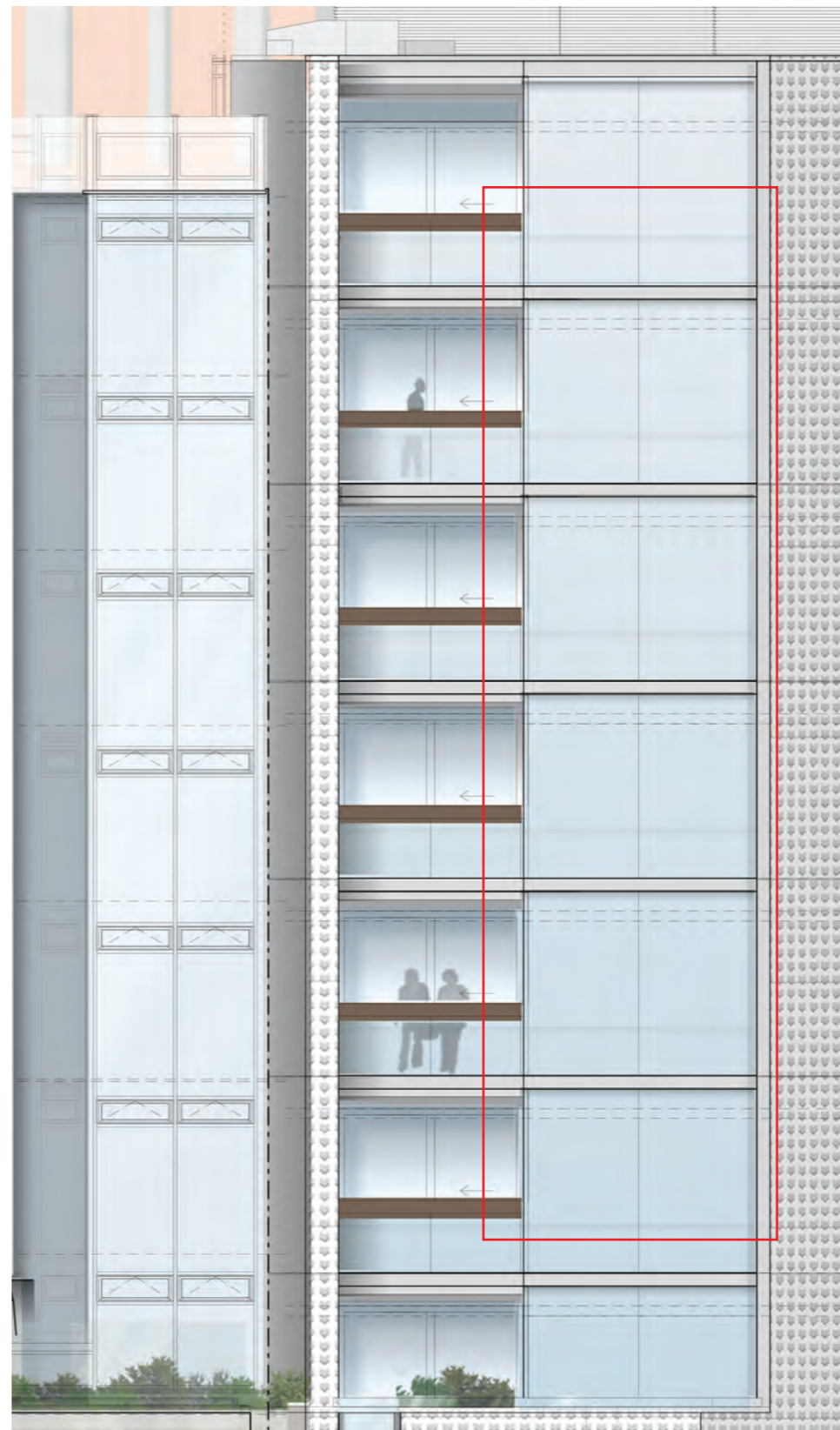
Timber handrail to CPW west facade reduced

The permitted West elevation of the affordable housing block indicates a hardwood timber handrail across the balconies and continuing along the adjacent glazed facade.

Following stage E design development and subsequent detailed discussions with the glazing manufacturers, it was established that this would be a technically difficult detail to resolve particularly with regard to achieving a weather tight and thermally broken solution. It is therefore proposed to limit this hardwood rail to the balcony areas only. This will also result in an improved residential amenity as these living rooms will benefit from an unobstructed floor to ceiling view looking West.



APPROVED ELEVATION
Drawing: 19559-CPA West Elevation



AMENDED ELEVATION
Drawing: 19559-CPA West Elevation

