

2.1.2 AMENDMENT 2: CPW

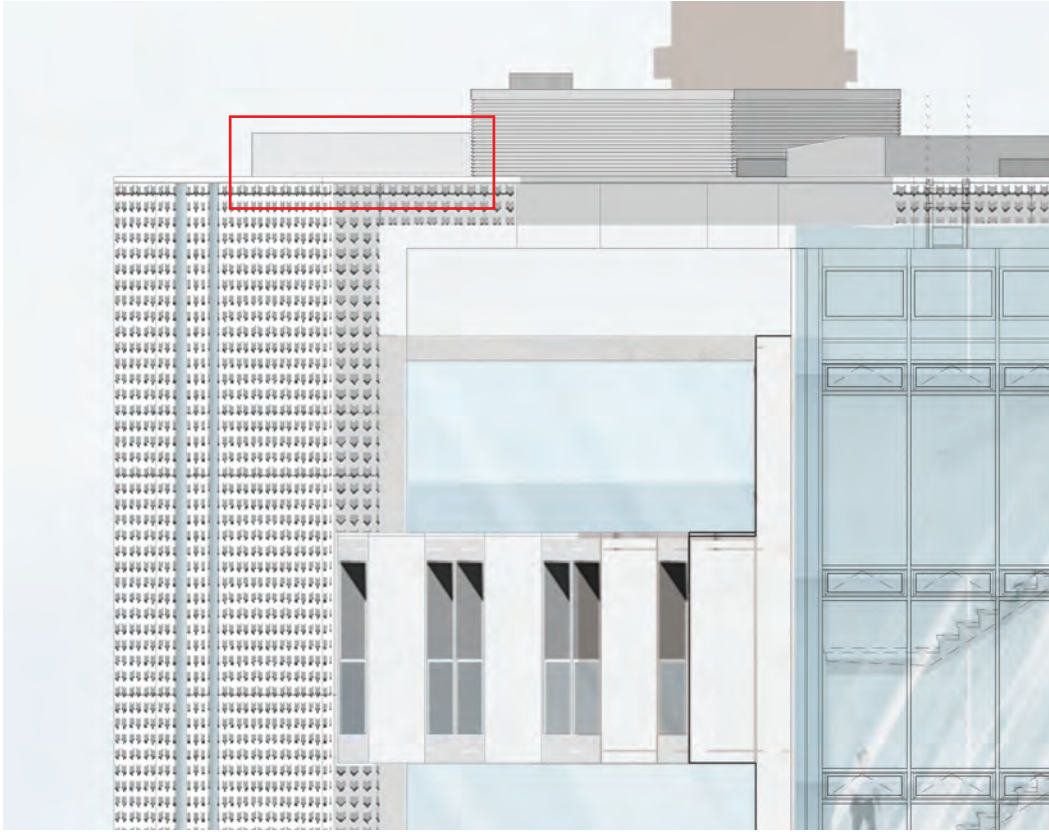
Additional fresh air intake equipment to CPW level 09 roof

Further detailed design development has demonstrated that, in order to provide sufficient air supply flow rates to the affordable housing apartments, there is a requirement to include additional equipment at the head of their fresh air riser. This comprises a fan unit, including acoustic attenuator, mounted on isolators to the CPW level 09 roof and sitting below the level of the louvred vent housing. The uppermost level of unit will be +58.997 AOD.

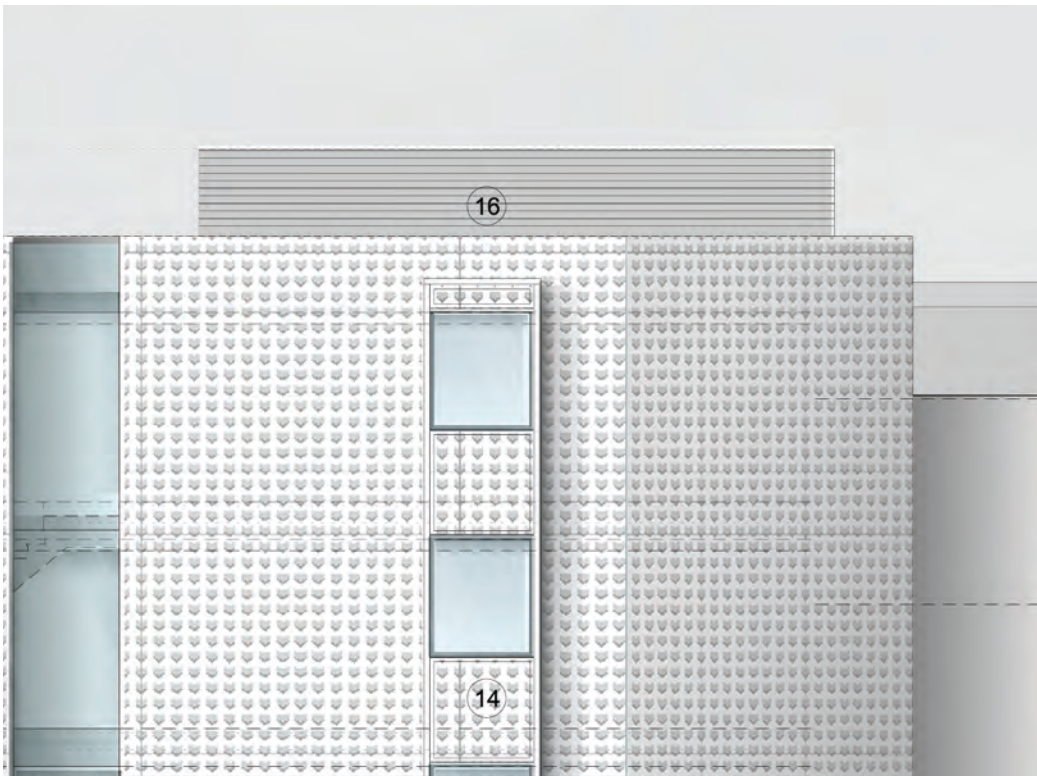
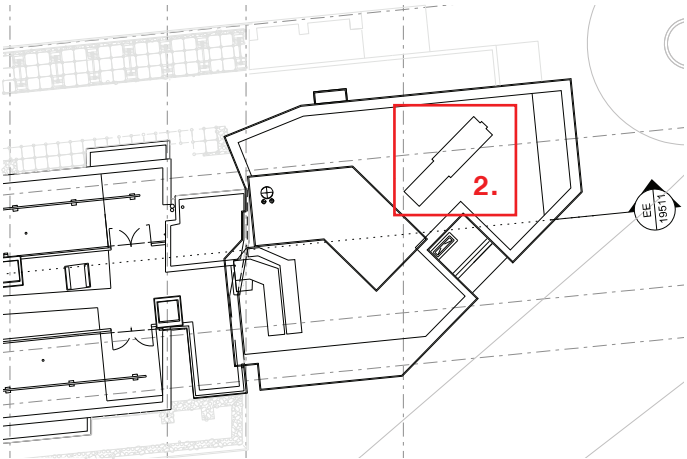
The level 09 roof is considered the optimal location as it provides the cleanest air environment whilst ensuring the equipment is concealed from view below by the surrounding parapets.



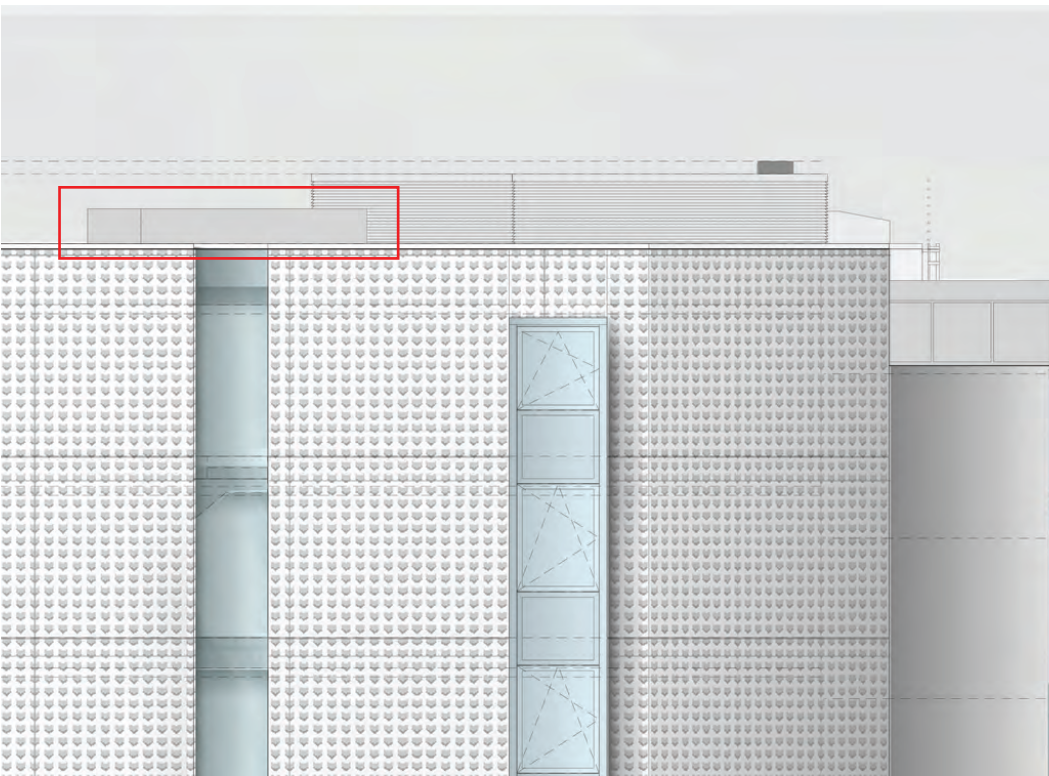
APPROVED ELEVATION
Drawing: 19555-CPA North Elevation



AMENDED ELEVATION
Drawing: 19555-CPA North Elevation



APPROVED ELEVATION
Drawing: 19557-CPA East Elevation



AMENDED ELEVATION
Drawing: 19557-CPA East Elevation