

2.1.1 AMENDMENT 1: CPW

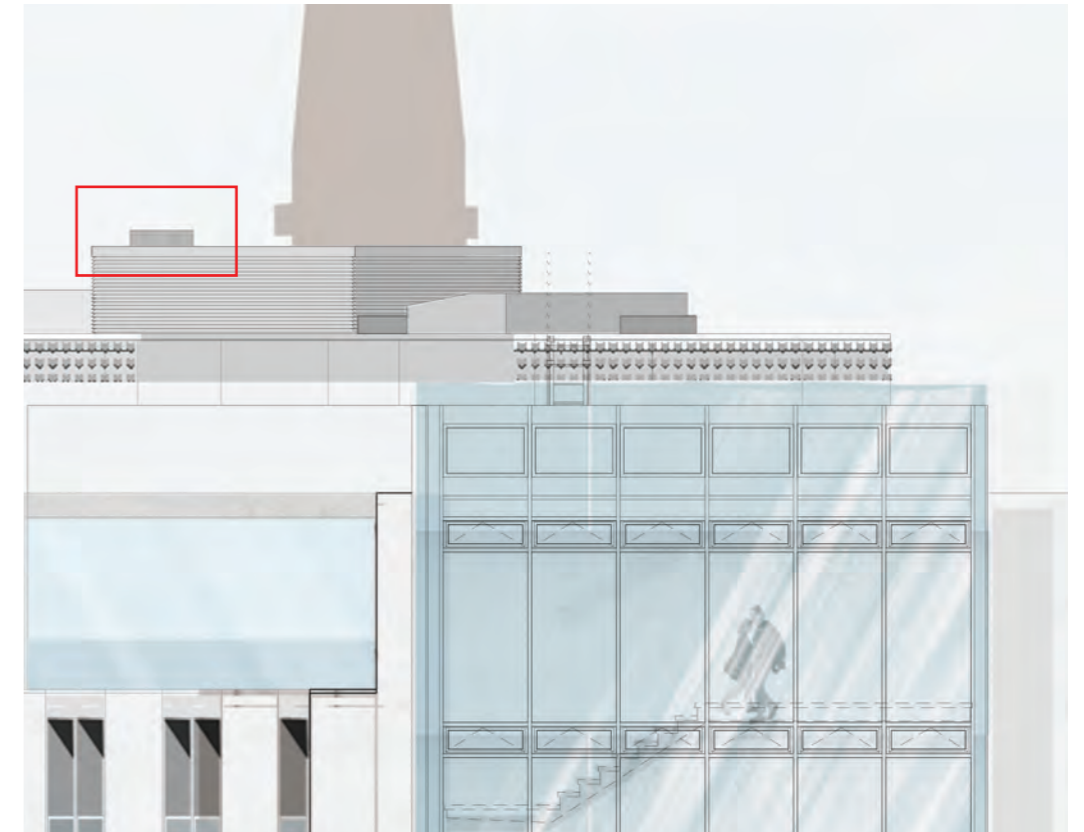
Flue heights increased

There are currently 2no gas boiler flues and 1no life safety generator flue incorporated in the permitted scheme. It was originally envisaged that these would be concealed within the louvred vent housing to the CPW level 09 roof. However, subsequent discussions have clarified that, in order to satisfy Building Control and Environmental Health requirements for discharge flue termination, the flues need to project a suitable distance above any surrounding structure. This ensures safe, unobstructed evacuation of exhaust gases.

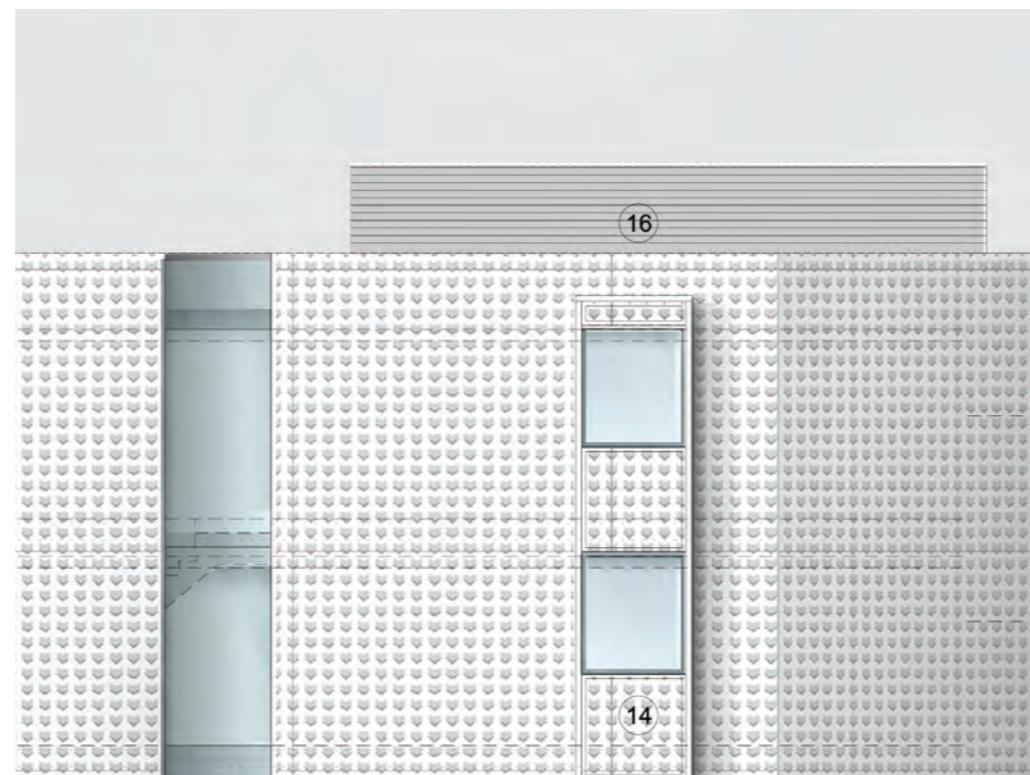
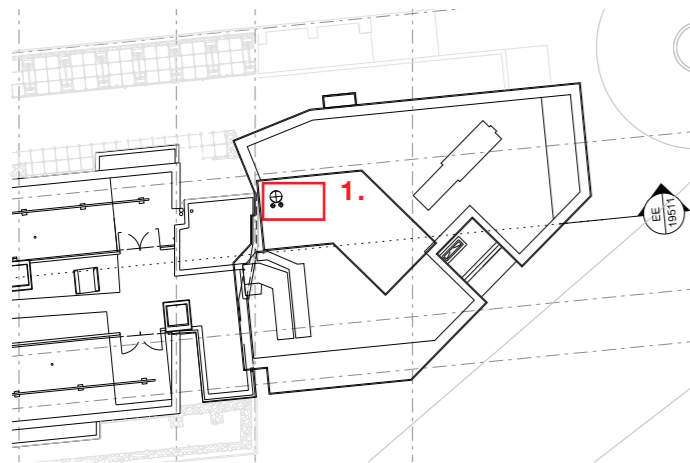
Therefore it is proposed they will now penetrate the roof housing and terminate 215mm above the housing i.e. +59.783 AOD. Previously they were enclosed within the height of the housing. We believe the visual impact from street level to be minimal.



APPROVED ELEVATION
Drawing: 19555-CPA North Elevation



AMENDED ELEVATION
Drawing: 19555-CPA North Elevation



APPROVED ELEVATION
Drawing: 19557-CPA East Elevation



AMENDED ELEVATION
Drawing: 19557-CPA East Elevation