

1.0 SUMMARY OF NON-MATERIAL AMENDMENTS (ELEVATIONS)

Amendment 1: Flue heights increased

Amendment 2: Additional fresh air intake equipment to CPW level 09 roof

Amendment 3: Additional smoke vent equipment to CPW level 09 roof

Amendment 4: Extension of CPW level 09 roof parapet over CPH main roof

Amendment 5: Timber handrail to CPW West facade reduced

Amendment 6: Precast cladding edge extended

Amendment 7: Glazing reconfigured to CPW South-West & West elevations

Amendment 8: Extended plinth and metal PPC lining to UKPN substation in lieu of louvre overcladding

Amendment 9: CPH North & South stairwell cladding and rooftop balustrades reconfigured

Amendment 10: Lifts 07 & 08 realigned and cladding reconfigured

Amendment 11: Lift 06 extended to serve level 02

Amendment 12: PPC metal panels to plant rooms in lieu of proposed glazing

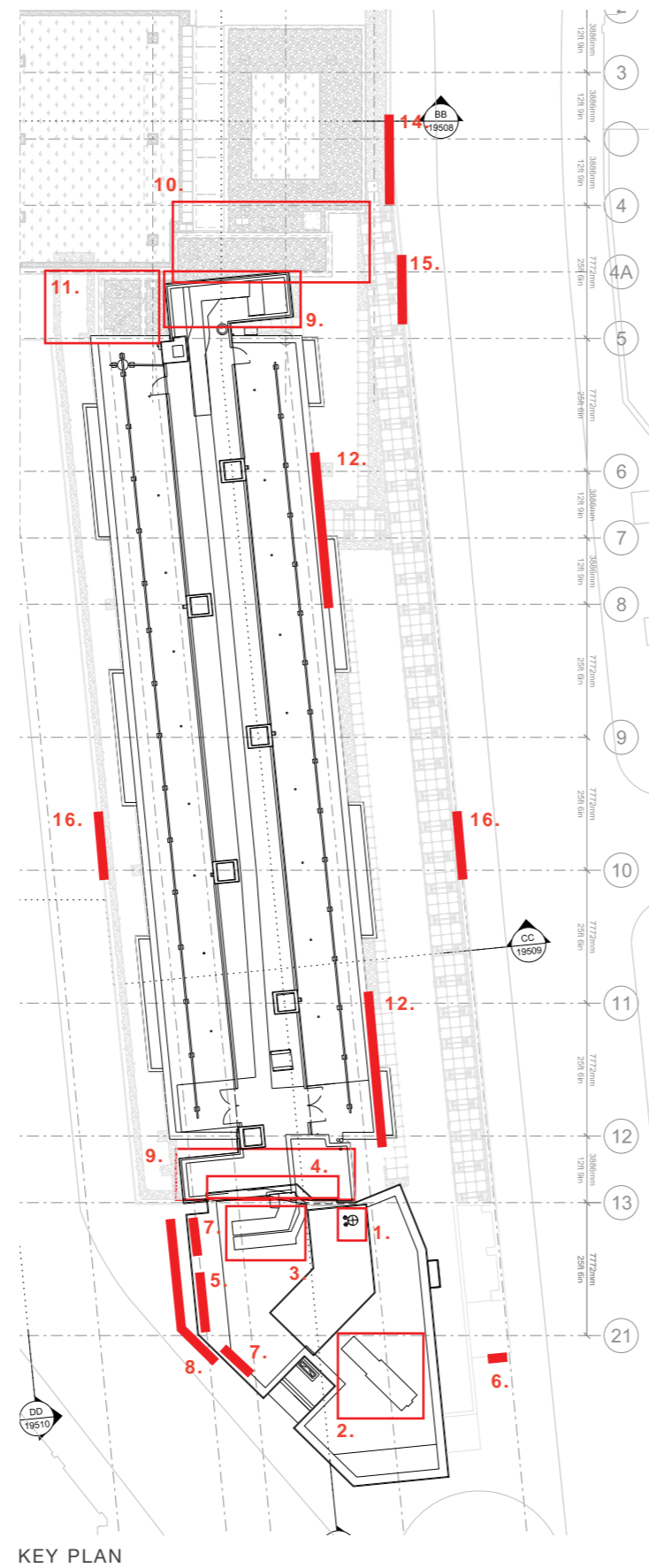
Amendment 13: East elevation revised to show correct retail duct route

Amendment 14: Louvres extended to underside of level 00M slab

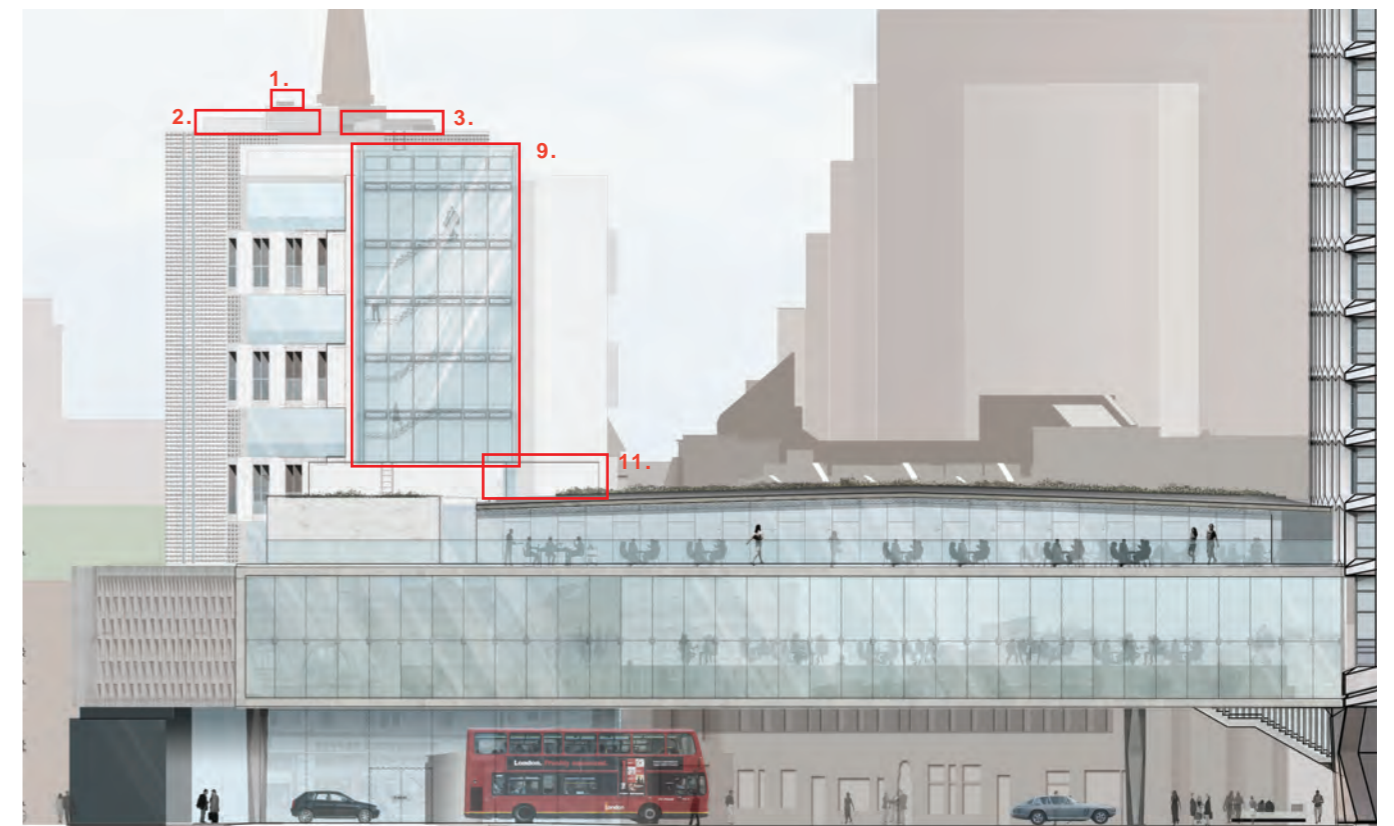
Amendment 15: Glazing to staff exit extended to underside of CPL soffit

Amendment 16: Glazed gate heights aligned with adjacent doors & glazed overpanel added

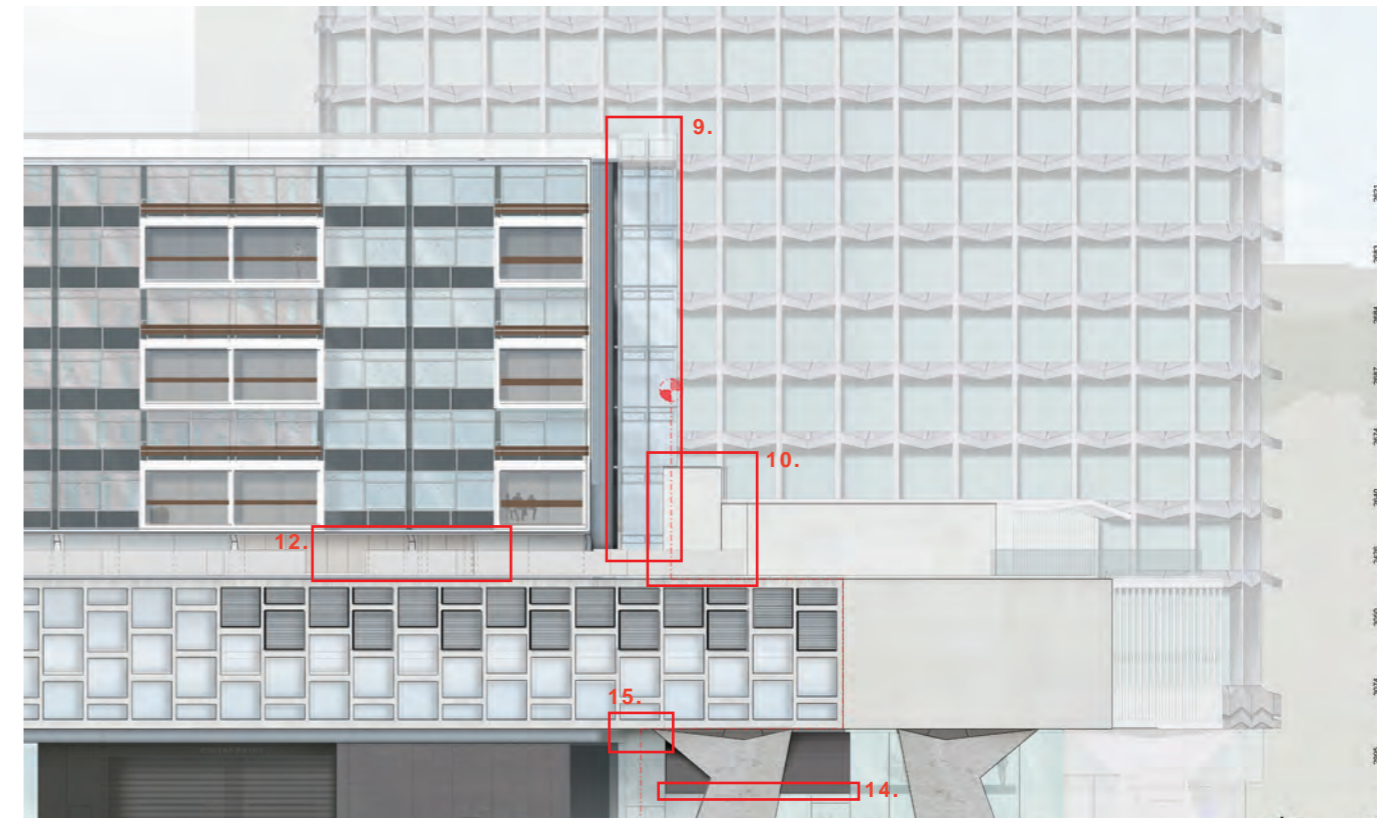
**NOTE:
FOR SUMMARY OF PLAN AMENDMENTS 17 - 22 REFER
TO SPECIFIC AMENDMENT SECTION**



KEY PLAN



KEY ELEVATION
Drawing: 19555-CPA North Elevation



KEY ELEVATION
Drawing: 19556-CPA East Elevation