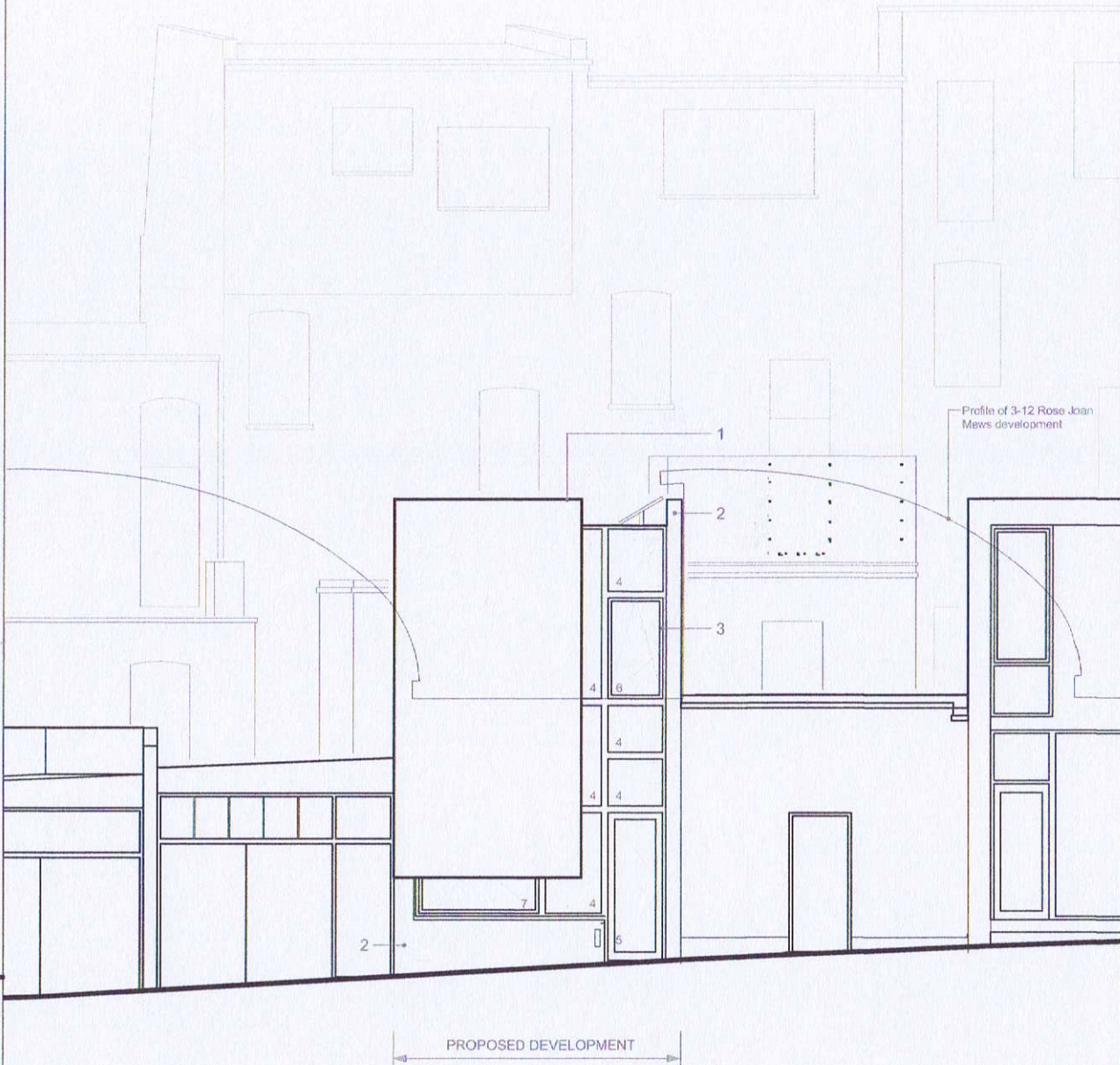


PROPOSED WEST (REAR) ELEVATION

- 1 LIGHT-GREY POWDER COATED ALUMINIUM MESH - VISION SCREEN - IDENTICAL TO THAT APPROVED FOR 16 & 14 ROSE JOAN MEWS
- 2 WHITE RENDER FINISH WITH METAL COPING
- 3 DARK-GREY POWDER COATED ALUMINIUM FRAMED WINDOWS & DOORS
- 4 OPAQUE GLAZING (FOR SPANDREL PANELS)
- 5 OBSCURED GLAZING
- 6 TEXTURED (SLIGHTLY OBSCURED) GLAZING
- 7 CLEAR GLAZING
- 8 HIGH PERFORMANCE FELT ROOFING
- 9 LEAD FLASHING / SHEETING



PROPOSED EAST (MEWS) ELEVATION

- 1 LIGHT-GREY POWDER COATED ALUMINIUM MESH - VISION SCREEN - IDENTICAL TO THAT APPROVED FOR 16 & 14 ROSE JOAN MEWS
- 2 WHITE RENDER FINISH WITH METAL COPING
- 3 DARK-GREY POWDER COATED ALUMINIUM FRAMED WINDOWS & DOORS
- 4 OPAQUE GLAZING (FOR SPANDREL PANELS)
- 5 OBSCURED GLAZING
- 6 TEXTURED (SLIGHTLY OBSCURED) GLAZING
- 7 CLEAR GLAZING

MICHAEL BEACOM
ARCHITECTURE & DESIGN
1 ARCTIC STREET
LONDON NW5 4DJ
020 7813 9672

16 ROSE JOAN MEWS
LONDON NW6 1DQ

Magnet Investments Ltd.

PROPOSED
EAST & WEST
ELEVATIONS

1:100 @ A3
JUNE 2013

13002 - 011