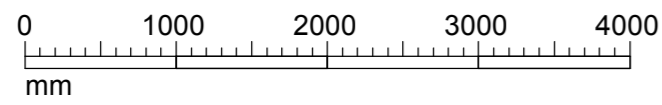
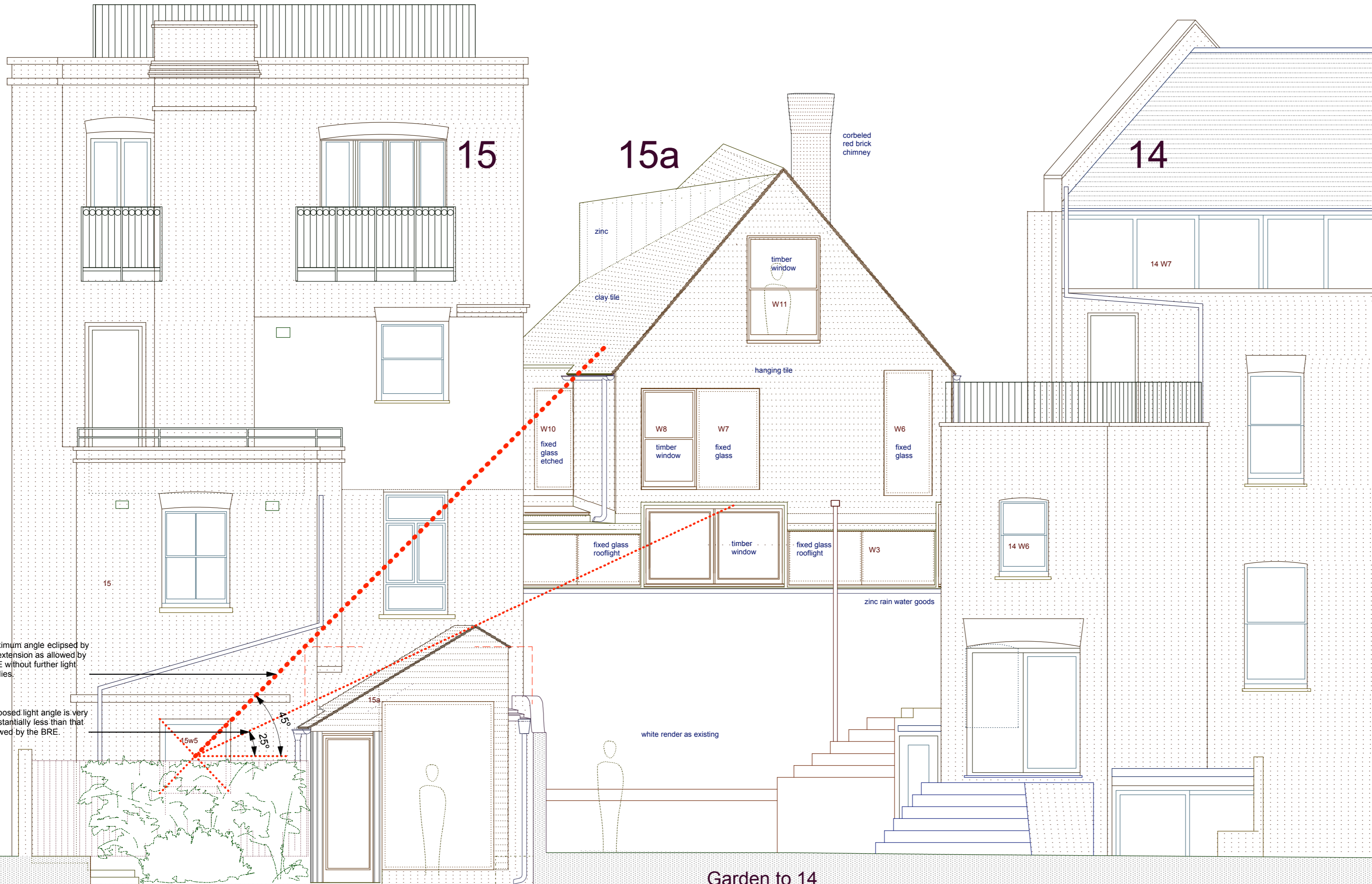


# NW

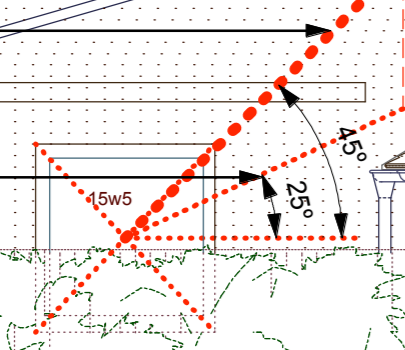


Y



Maximum angle eclipsed by an extension as allowed by BRE without further light studies.

Proposed light angle is very substantially less than that allowed by the BRE.

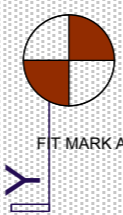


ridge level	12370
ridge level	11970
eaves level & attic floor	8520
ridge level	5995
second floor	5895
eaves level	3710
first fl	3245
ground fl	0.00
entry fl	-340

Note: The levels have not been changed generally from the approved application, but have been re-index in line with the slightly ground floor level.

Garden to 15a

Garden to 14



14.11.14  
prints @ A2 to 1:50 scale  
Woollacott Gilmartin Architects  
48(b) Netherhall Gardens London  
NW3 5RG  
woollacottgilmartin.com  
wgarchitects@mac.com  
0207 431 9983  
07933 672 917

## P/1:50-103

Proposed  
Northwest Elevation A  
15a Parliament Hill

basement fl	-3005
sfl	-3190