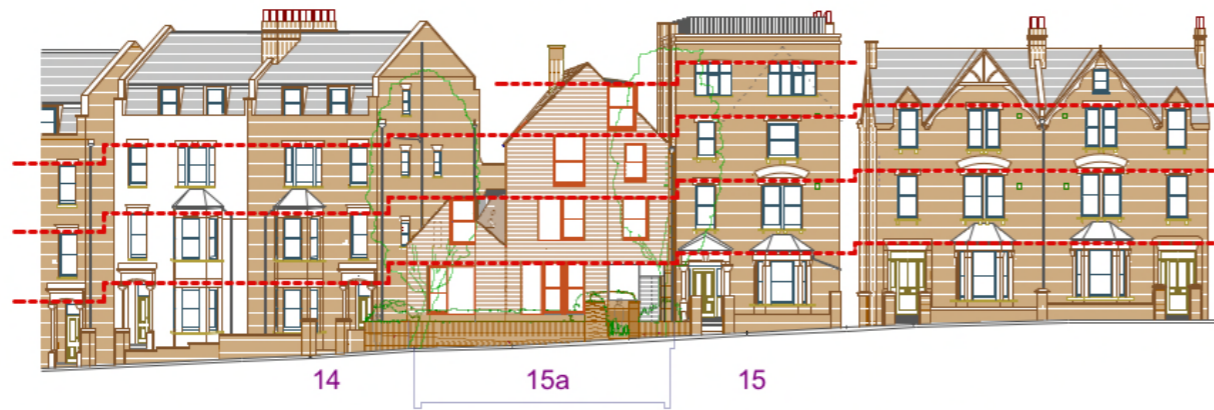


Site Topography and the Terrace Fenestration



The fenestration of houses within the conservation area follows a typical historical pattern: Their alignment steps with the changing profile of the street.

The relation of the fenestration at 15a to the neighbouring houses at 14 and 15 Parliament Hill is designed accordingly. Following natural changes in the topography, the street in front of 15a Parliament Hill is steeper than adjacent areas to the north and south. The proposed windows to 15a follow this topographical profile.

*The topographical contour lines on Parliament Hill are reflected in the stepped alignments of the fenestration to the adjacent terraces. This is reflected in the proposed window arrangement of the house.*



*The street is steeper in front of 15a as shown by the closer proximity of the contour lines.*