

Front Elevation:
Junction Between 14 and 15a Parliament Hill

The present house at 15a and its front elevation break the continuity of the conservation area. This break is the result of the scale, form, materials, and the site plan of the existing house. The design of the new house seeks to reinforce the continuity of the two adjacent terraces.

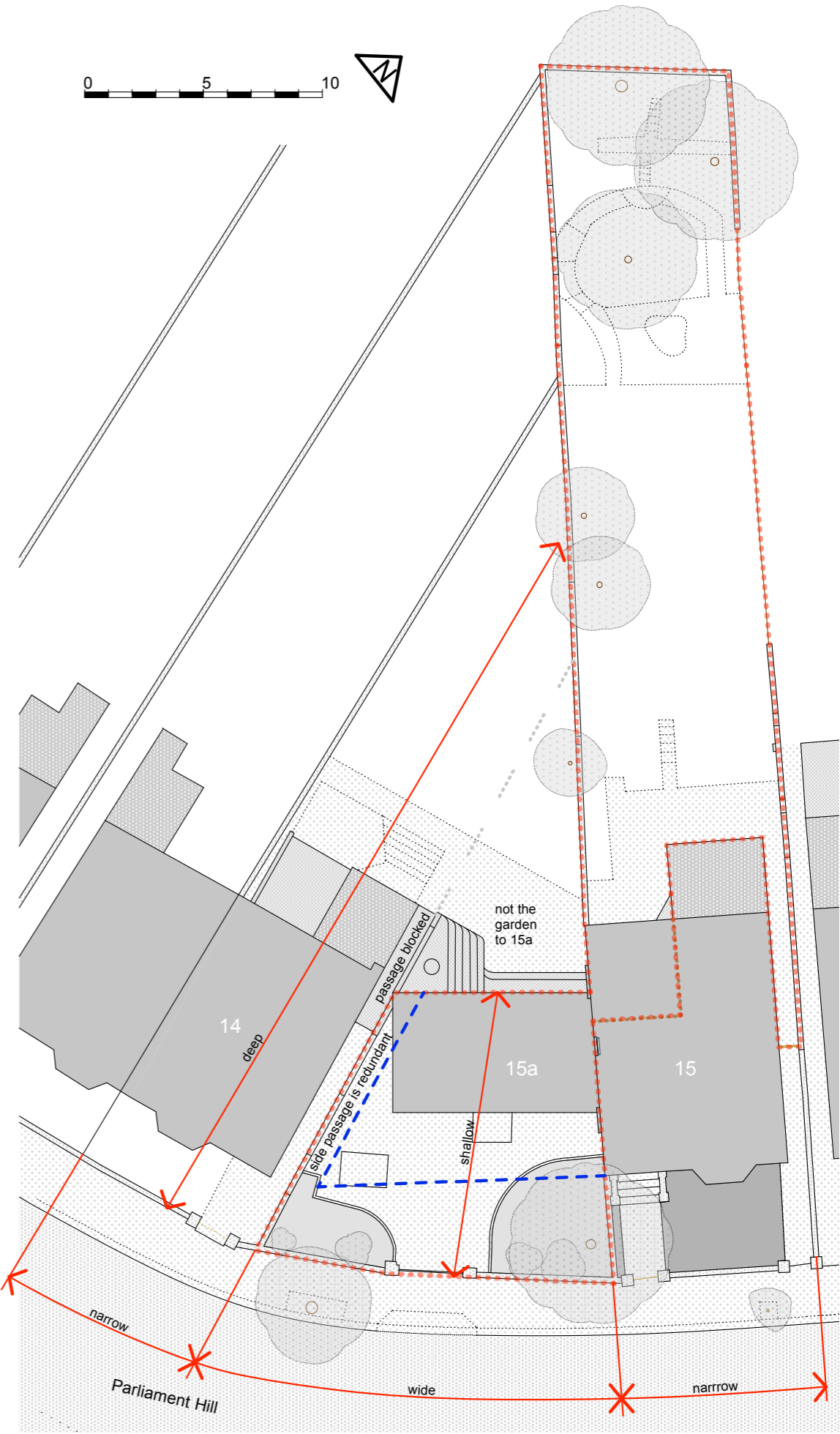
The shape of the site at 15a, its position on a gentle curve in Parliament Hill, and the arrangement of the garden are all unconventional. The house and site at 15a do not follow the conventional form within the conservation area. The shape of the site is unique. The design solution must take account of these circumstances:

- The garden to 15a is not immediately behind the house. In practical terms a side passage is therefore redundant: It would not lead to the back garden.
- 14 has filled in its side passage at ground floor level with an extension.
- With the Conservation Area generally the demise to the sides of houses along curving streets tends to be arranged in line with radial garden walls in an accordion-like plan form.
- The demise at 15a does not follow this pattern. The side walls to 14 and 15 are perpendicular to the line of the street and all the “splay” of the turn in Parliament Hill is given over to 15a.
- This result is a more unusual and awkward site plan. The site at 15a is very wide and shallow when compared to the surrounding houses.

The new house must adapt to this unusual site plan.



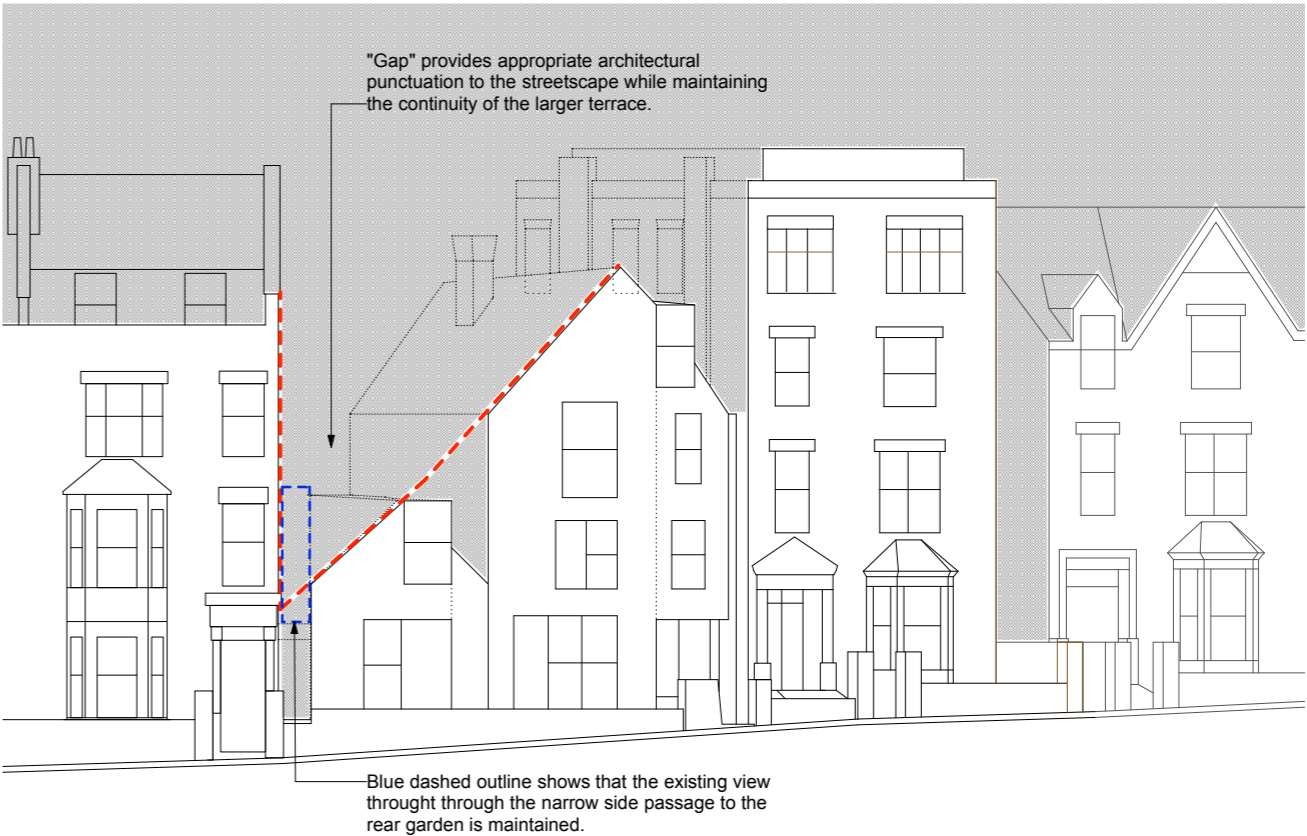
Site Plan: Annotations detail the unusual plan form and configuration of the site demise along the bend in Parliament Hill of 14, 15a, and 15.



*Existing Front Elevation:
Relation Between 14 and 15
Parliament Hill
The existing house is small and
set back creating an awkward
break in the continuity of the
fabric.*



*Proposed Front Elevation:
Relation Between 14 and 15
Parliament Hill
The rhythm and stepped form of
the proposed house creates a
gentle architectural punctuation to
the gap between 14 and 15a.*



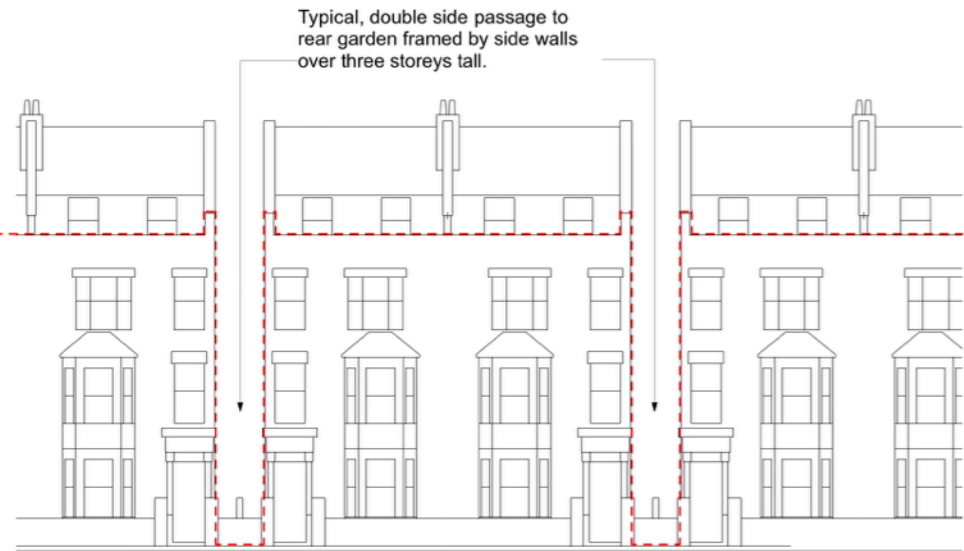
The Architectural “Punctuation” of the Front Elevation

The use of paired and stepped gable end walls addresses the practical challenge posed by the wide street frontage of the site. The two gables allow for the creation of a very deliberate architectural punctuation to the proposed elevation.

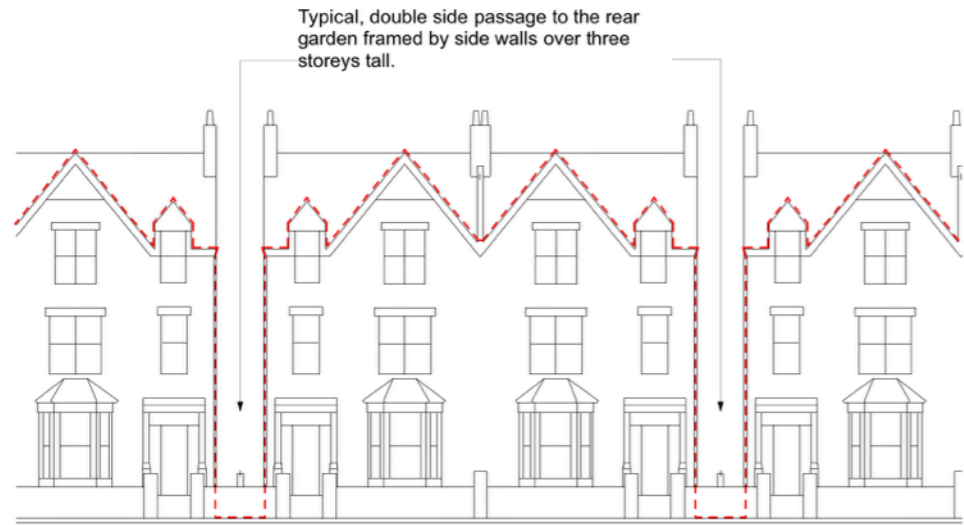
As they turn the corner the pitched gable ends change in scale and step down to accordion around the slight bend in Parliament Hill. This descent of the building volume to just over a storey at the junction between 14 and 15a provides a gentle and appropriate architectural pause which coincides with to the slight bend in Parliament Hill.

This is a pause and not a full stop and the overall visual continuity of the larger of the terrace maintained. The material and form of the proposed house establishes strong visual connections to the existing gable end houses leading up Parliament Hill beyond 15. The existing relatively broken fabric of the streetscape is knitted together by the proposed new house.

Diagrammatic Elevations:
Typical junctions between paired semidetached houses in the conservation area.

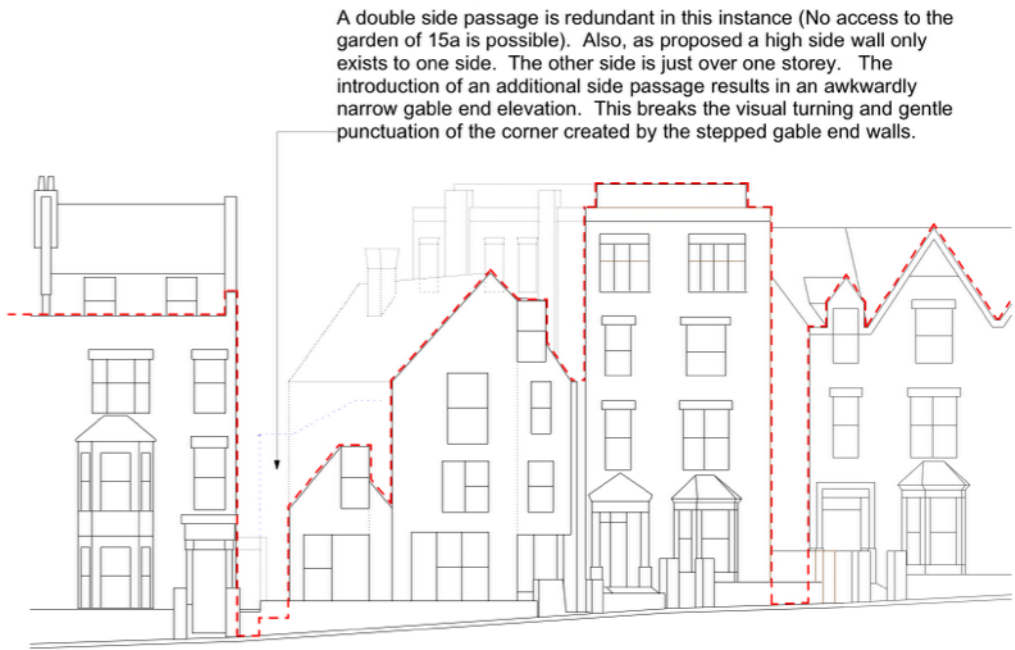


Typical "Mansard" Terrace

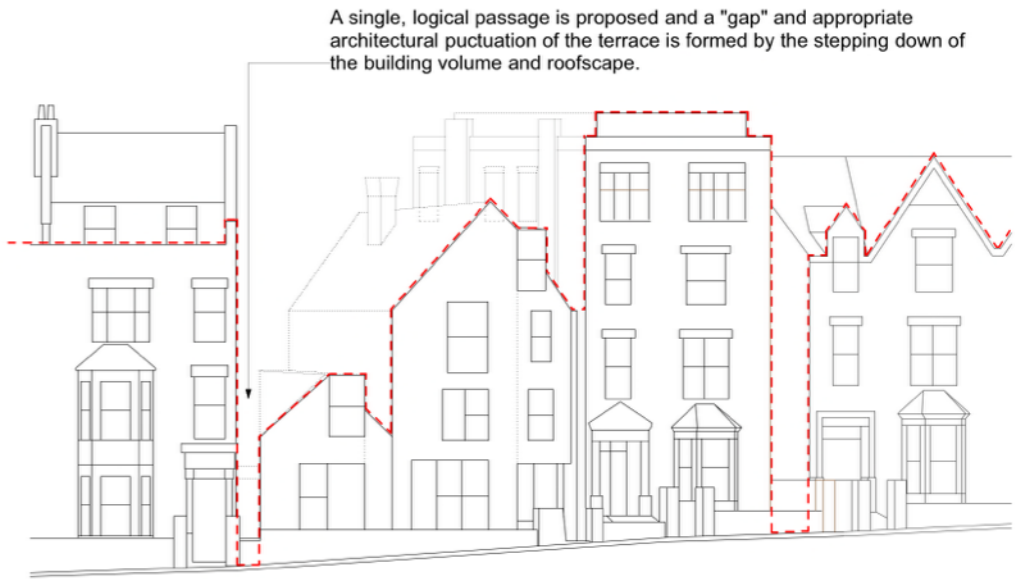


Typical "Pitched Gable End" Terrace

15a Diagrammatic Elevations:



Junction Between 14 & 15a:
Shown with a conventional
doubled Side Passage



Junction Between 14 & 15a
as Proposed:
The form and scale of the two
gables provides a gentle and
appropriate architectural
punctuation to the junction of
the two terraces.