

7.a Appearance

More extensive details regarding the materials, detailing and appearance of the proposed building can be found on the annotated planning drawings. The following statement and images describe and illustrate the design intention.

The proposed building is designed to relate directly to the materials, forms, and character of the adjacent terraces and the conservation area more generally. At the same time it is intended that a gently contemporary sensibility should run through the detailing, scale, and form of the building. So for instance the walls are not made of brick as is common in the area, but are made instead of handmade clay hanging tiles which are the same material in a different form. Construction with hanging tile is very practical on externally and heavily insulated building, so the construction and material of the building will have a logical relationship. Matching clay tiles are also proposed for the roof and the verge and edge detailing between the two can be done in a very visually continuous and simple way. This simplicity and continuity will add to the contemporary undertones of the building. The angled and lapped form of hanging tiles also reproduces the pitched and faceted form of the larger building.

A similar mixture of contemporary and historic detailing is proposed for the windows. White painted, vertically sliding sash windows are to be used alongside frameless fixed glass double glazing structurally bonded to hidden mill finish aluminium frames. Large sheets of glass are very attractive, but are relatively difficult to move and open. The vertical movement of sash windows is very simple and practical and ideal for top and bottom opening of the window is ideal for ventilation, security, and safety. The combination of both sliding sash and fixed glass is practical and will allow a strong contextual relationship to the existing conservation area.



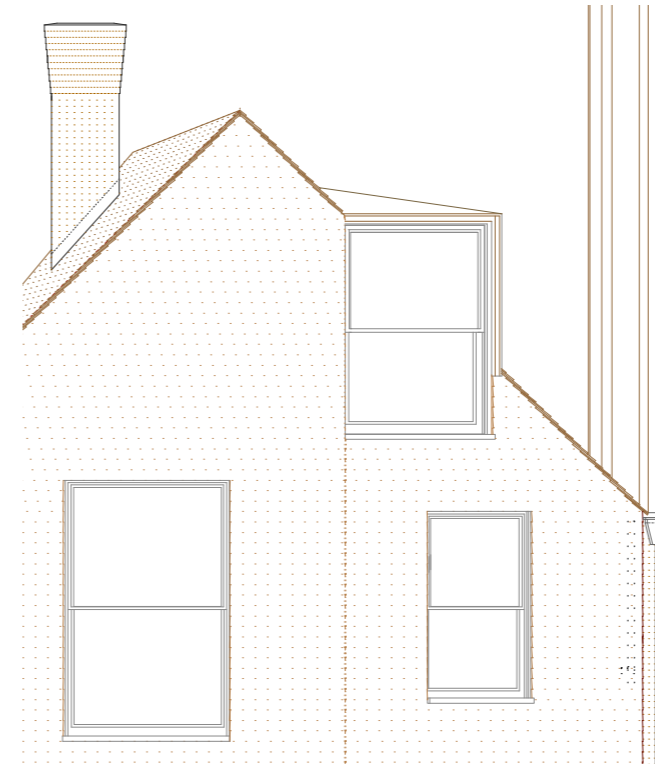
Handmade hanging tile is an historic material, but the all over covering of roof and wall and the simplicity of the edge detailing can allow for the development of a subtly contemporary sensibility in the handling of the material.



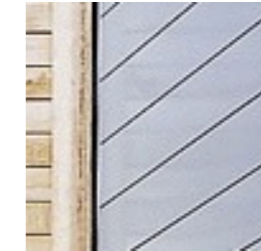
Rooflights set flush into the a roof clad in handmade clay tile.



Detail of the proposed construction of the brick entry pier. The detail refers both to the internal chimney construction and the historic chimneys in the conservation area more generally. The angled brick also has a visual connection with the clay hanging and roof tiles.



Corbeled soft red brick to the top of the chimney



Soft red handmade clay hanging tile and roof tiles with mortared tile verges and a zinc clad dormer window. The vertical sliding sash windows are very traditional, but in some cases their scale and configuration suggest a more contemporary aesthetic.

