

Notes
Contractor to check all dimensions on site. Do not scale from this drawing. Stanton Williams to be advised of any variation between the drawings and site conditions.

© Stanton Williams.
All rights described in Chapter IV of the Copyright, Designers and Patents Act 1998 have been asserted.

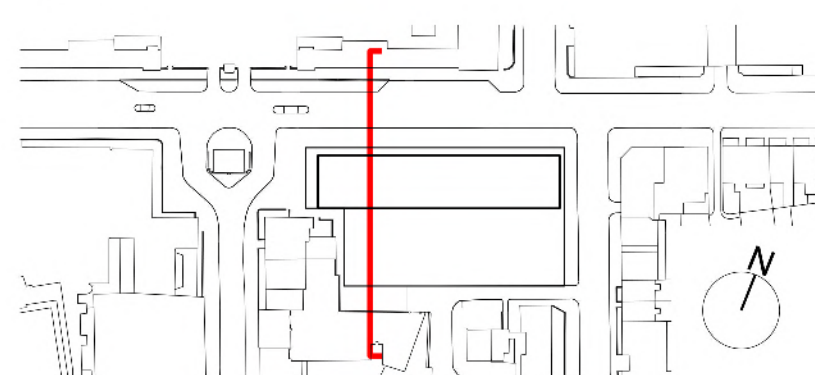
To be read in conjunction with the specification and all relevant drawings.

Key:

1. External facing brickwork
2. Terracotta cladding
3. Recessed metal framed glazing
4. Metal cladding
5. Raised planter

Revision	Date	Description
0	05.09.14	Issued for Planning
1	22.12.14	Issued for Planning Addendum

Location



Stanton Williams
36 Graham Street
London W1 8GU
Phone +44 (0)20 7880 6400
Email 464@stantonwilliams.com
www.stantonwilliams.com

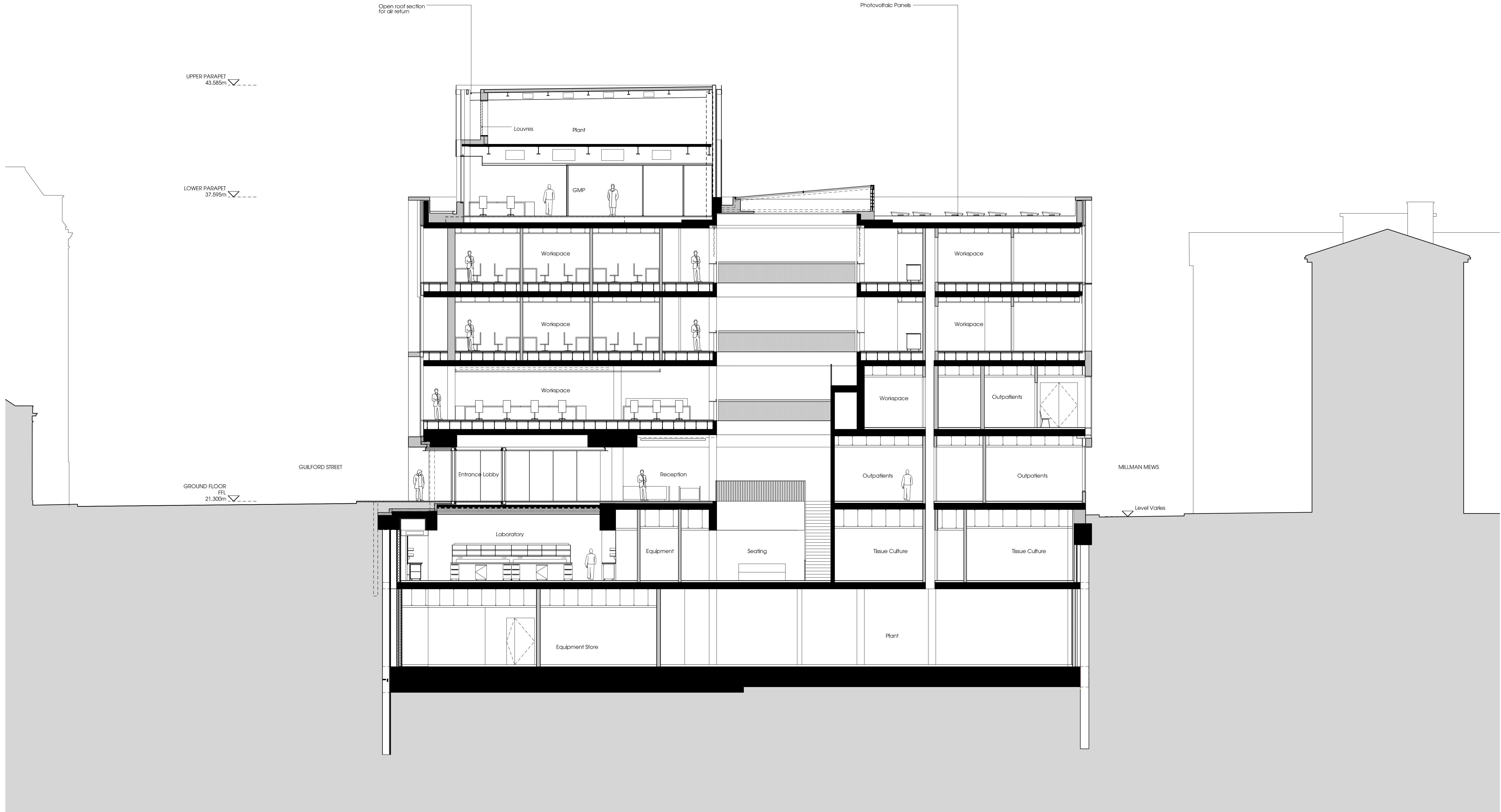
STANTON
WILLIAMS

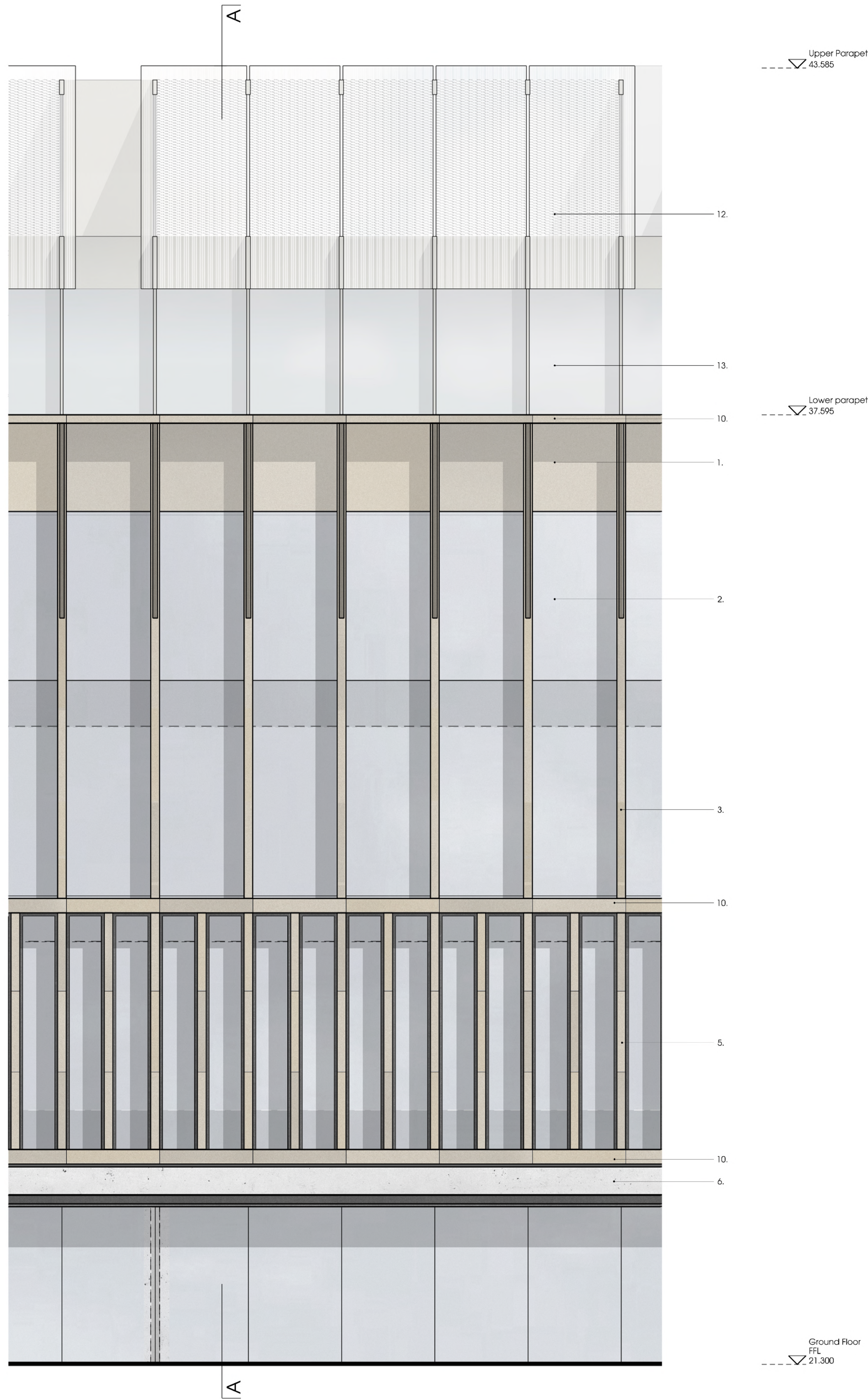
Project
Centre for Research into Rare Disease in Children
at Great Ormond Street Hospital

Drawing Title
Proposed
General Arrangement
Section AA

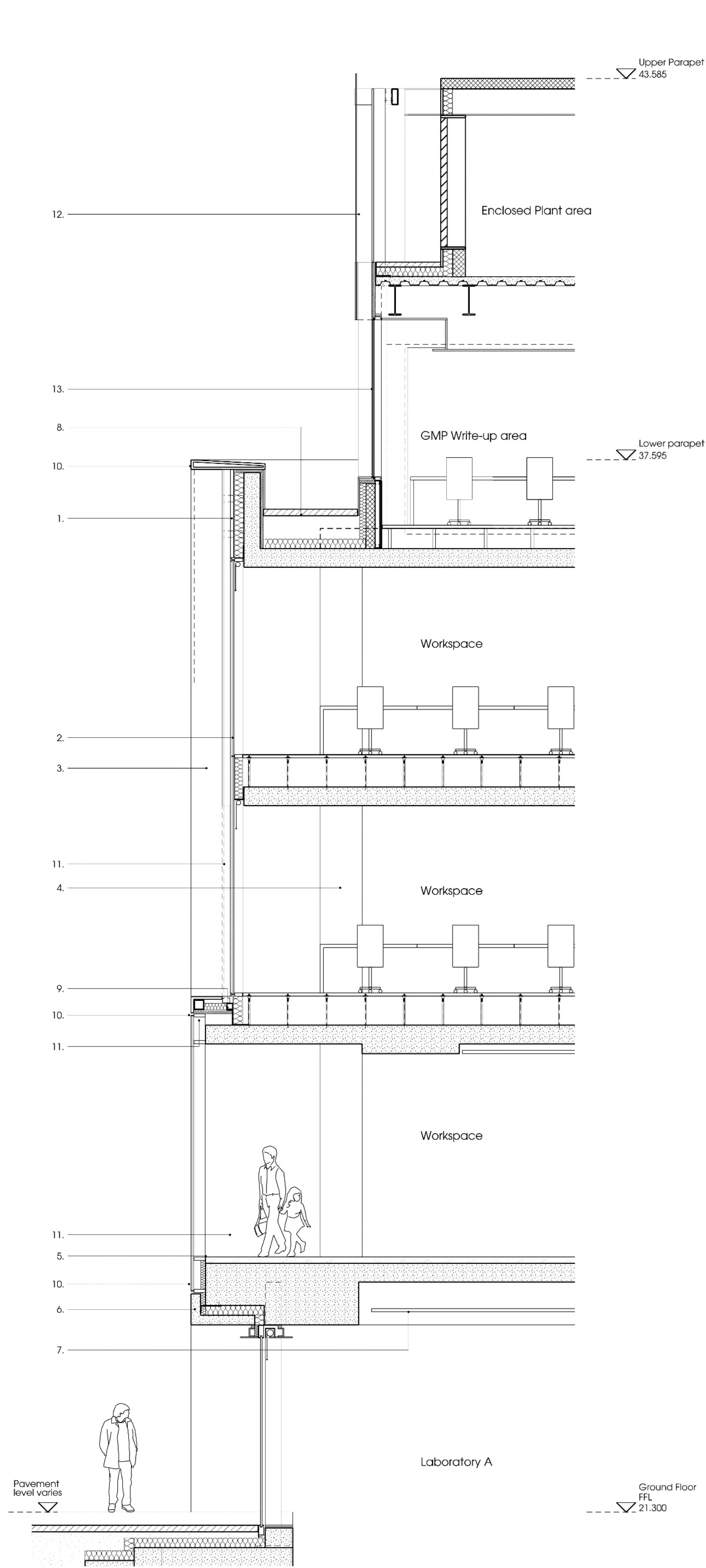
Date	Scale @ A1 (A3)	Status
05.09.2014	1:100 (1:200)	Planning
Drawn	Checked	Approved
EM	KI	GH

Project No.	Drawing No.	Revision
464	PL-250	1





01 North Elevation Detail
PL_300 | Guilford Street



02 Section AA
PL_300

Notes

Contractor to check all dimensions on site. Do not scale from this drawing. Stanton Williams to be advised of any variation between the drawings and site conditions.

© Stanton Williams.
All rights described in Chapter IV of the Copyright, Designers and Patents Act 1998 have been asserted.

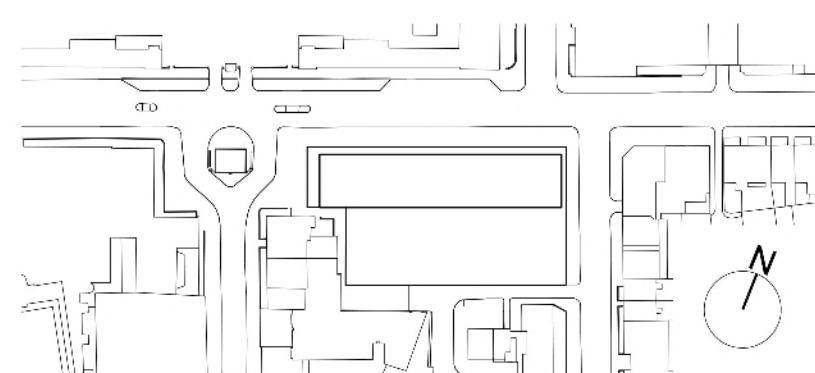
To be read in conjunction with the specification and all relevant drawings.

1. Terracotta fascia panel
2. Double height curtain walling with silicon jointing at transom
3. Double height terracotta fin
4. Structure in background
5. Single storey high terracotta fin
6. Insulated precast fascia panel
7. Acoustic panel within concrete coffered slab
8. External paving or timber decking to roof (TBC)
9. Drainage channel
10. Terracotta cladding to form cill and 'transom'
11. Steel support structure for terracotta cladding
12. Glass rainscreen incorporating metal mesh panels behind
13. Curtain walling with projecting external mullions.

Revision Date Description

0	05.09.14	Issued for Planning
1	22.12.14	Issued for Planning Addendum

Location



Stanton Williams
36 Graham Street
London N1 8GJ
Phone +44 (0)20 7880 6400
Email 464@stantonwilliams.com
www.stantonwilliams.com

STANTON
WILLIAMS

Project
Centre for Research into Rare Disease in Children
at Great Ormond Street Hospital

Drawing Title
Typical Bay Study
North Elevation through Workspaces

Date	Scale @ A1(A3)	Status
05.09.2014	1:50 (1:100)	Planning
Drawn	Checked	Approved
EM	KI	GH

Project No.
464

Drawing No.
PL_300

Revision
1

Stanton Williams
36 Graham Street
London
N1 8GJ