

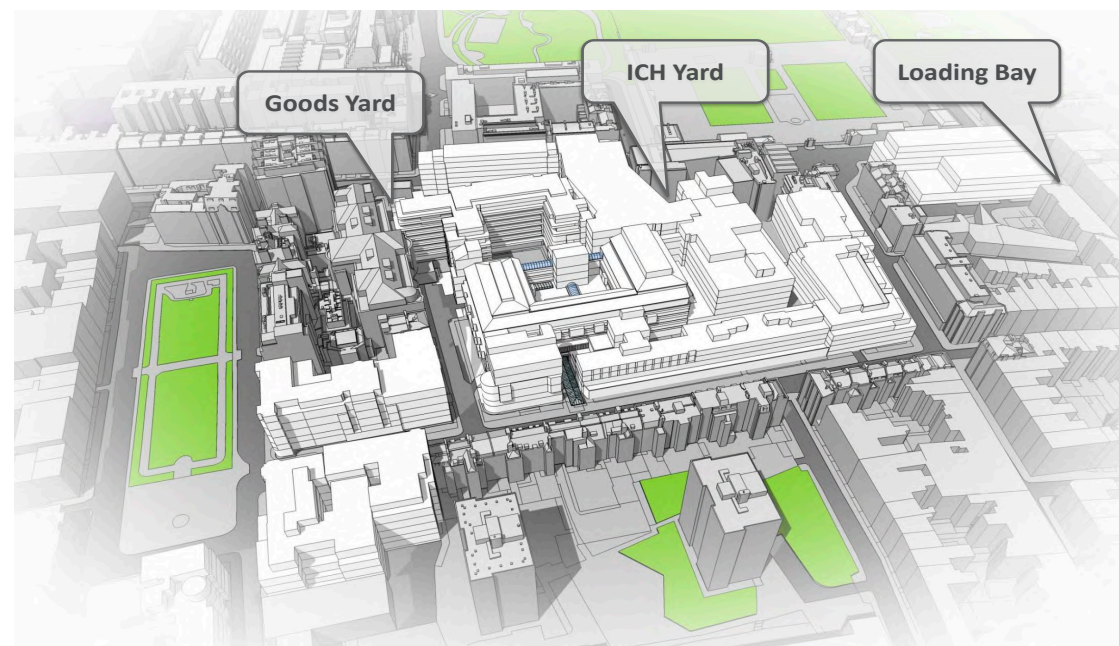
5.0 Deliveries and Servicing

Following submission of the original planning application there have been a number of discussions with Planning Officers on the servicing strategy for the building and how this could be improved. Following further detailed analysis by GOSH and the design team an alternative proposal has been formulated.

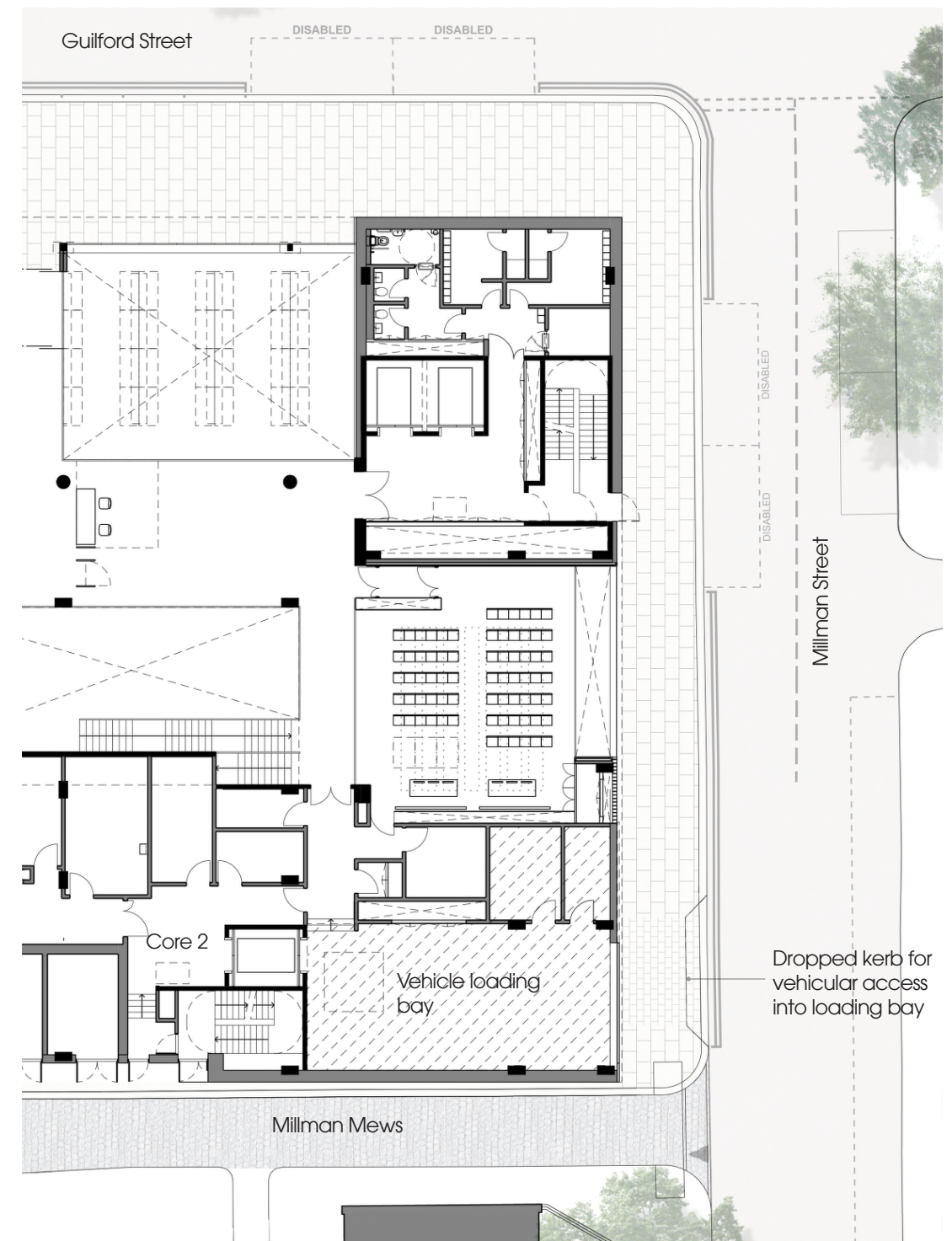
The key principles are:

- GOSH is able to provide a consolidated strategy for deliveries using the central GOSH delivery/service yard so that delivery numbers to CRRDC can be greatly reduced.
- An internal loading bay in the south east corner of the building has been created by adjusting the internal layout. This will provide an in-board vehicle loading/unloading bay for small to medium sized vehicles with access via a dropped kerb on Millman Street.
- Larger vehicles will park directly outside the loading bay door and contact the goods receipt office. The loading and unloading process will be managed by the goods receipt manager or equivalent person.
- Refuse vehicles will use the same strategy as for larger vehicles.

Reference should be made to the revised Transport Assessment document for further detail including vehicle tracking diagrams.



Site wide consolidated strategy



Proposed servicing strategy

