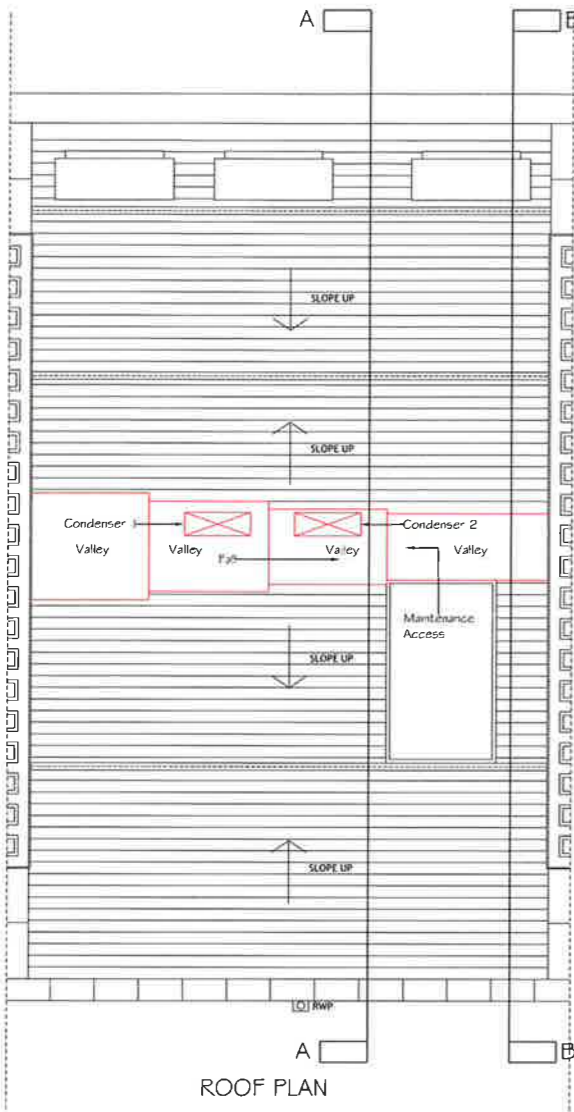


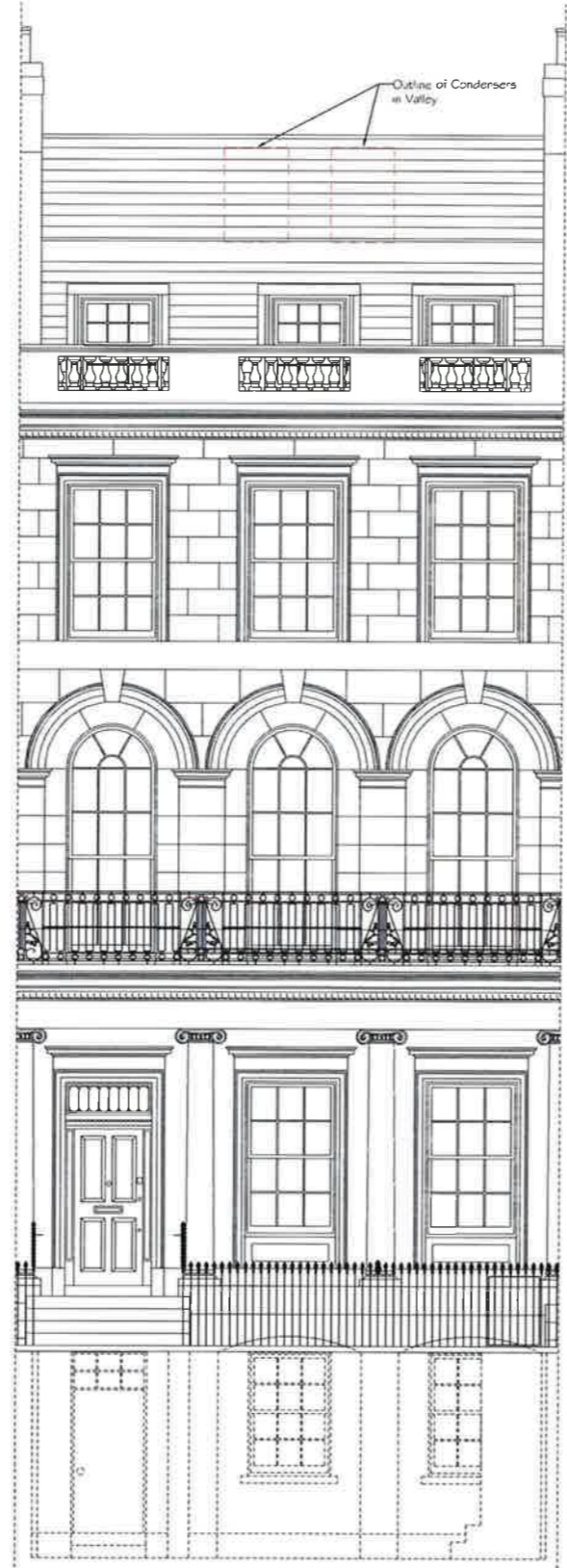
Comfort Cooling Sheet 1 of 2



Park Square East



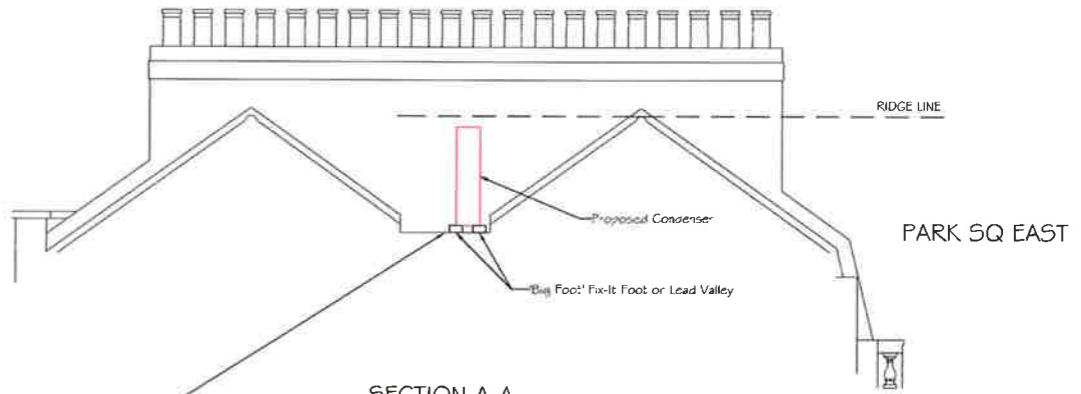
ROOF PLAN



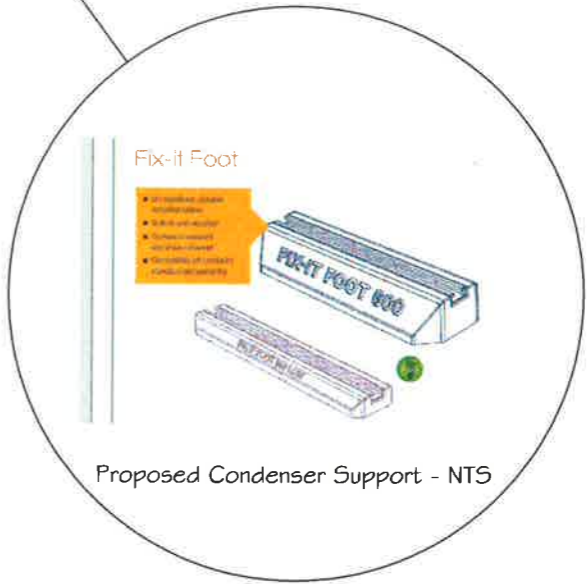
FRONT ELEVATION - 21 PARK SQ EAST

NOTES

1. Condenser 1 - Daikin RXY5QG99V1
2. Condenser 2 - Daikin RXY5Q4P8V1
3. Condenser Weight 120 kg
4. Refrigerant Pipework to be sleeved into Roof Space via lead slates
5. Cable Tray to be supported on 'Big Foot' Tray supports
6. Local Electrical Isolators to be mounted on Unistrut supported on 'Big Foot' supports

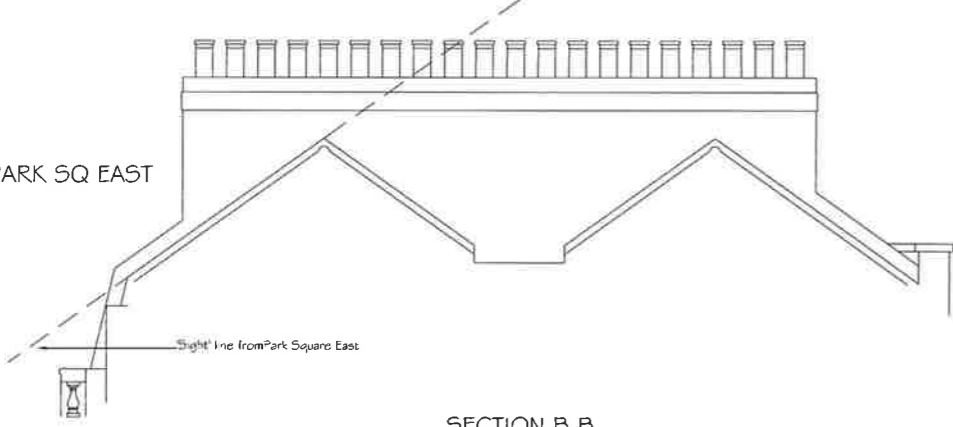


SECTION A-A



Proposed Condenser Support - NTS

PARK SQ EAST



SECTION B-B

REV	DATE	DESCRIPTION	DR	APPROVED	REV	DATE	DESCRIPTION	DR	APPROVED	REFERENCE DRAWINGS		KEY PLAN	ISSUE	PROJECT	TITLE	SCALE	DATE	APPROVED
										DRG NO	DESCRIPTION							
A	19/12/14	Reference to Aerials Removed	CAD	CMDK										21 Park Square East	Proposed Comfort Cooling Condensers	1-50	Dec 14	CMDK

Planning

COLIN KING ASSOCIATES Royal Naval Club & Royal Albert Yacht Club
 17 Fembroke Road
 Portsmouth
 Hampshire
 PO1 2NT
 E-mail cka@lalktalk.net
 Tel 023 92877161 Fax 023 92003911

PROJECT 21 Park Square East
 TITLE Proposed Comfort Cooling Condensers
 SCALE 1-50
 DATE Dec 14
 APPROVED CMDK
 DRAWING NUMBER 10465/PL1/2
 REV A