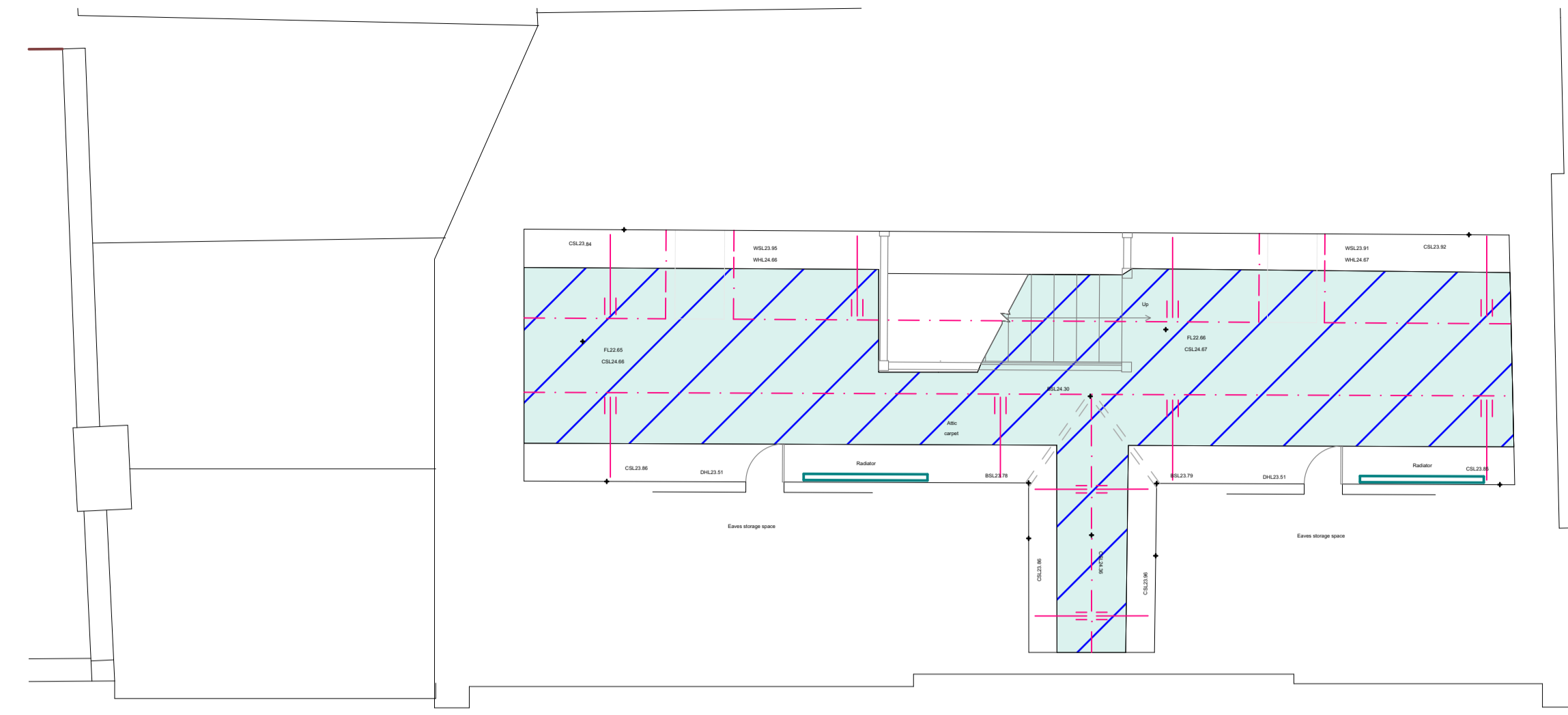
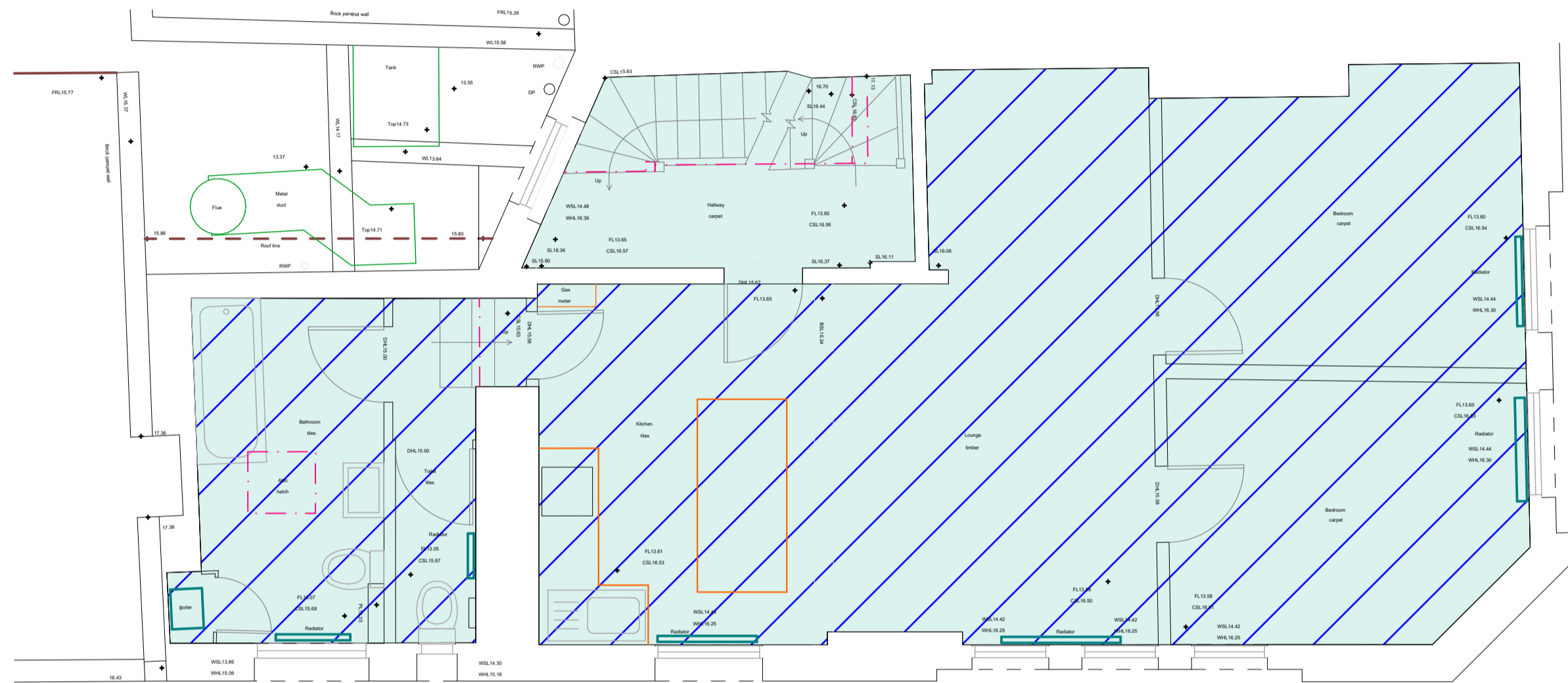


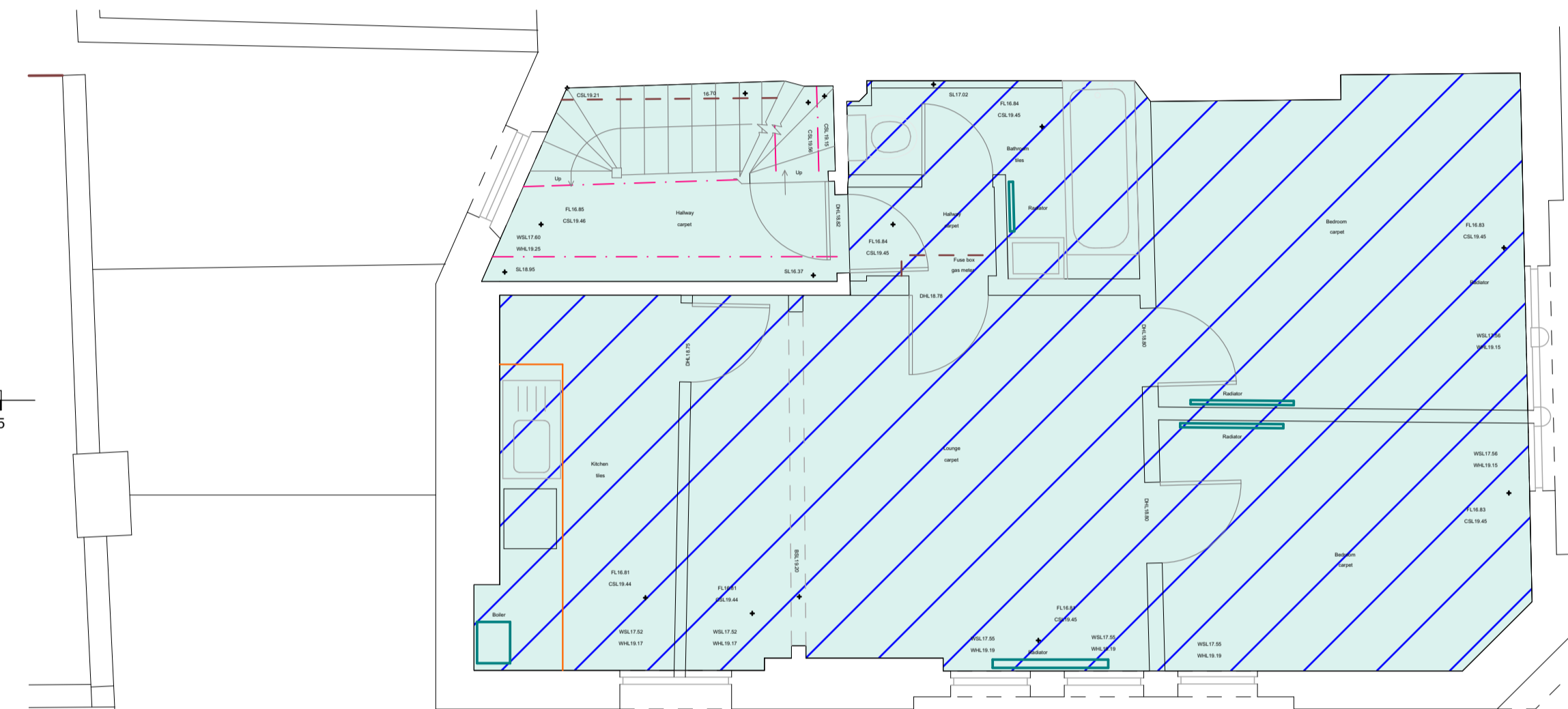
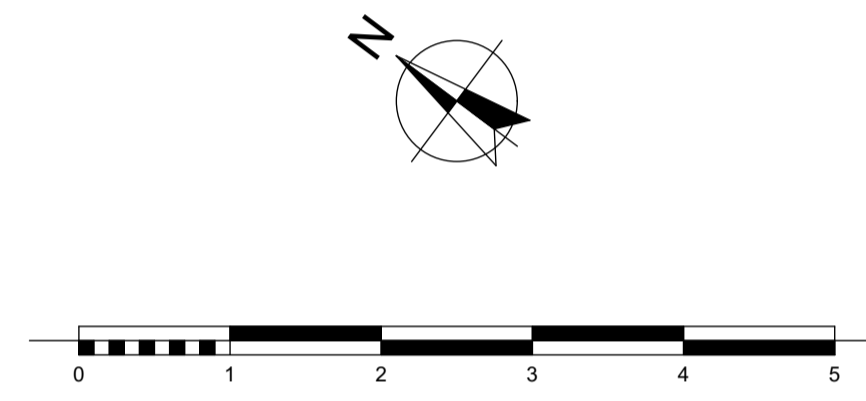
RESIDENTIAL 50.0 m² TOTAL 55.0 m²
THIRD FLOOR



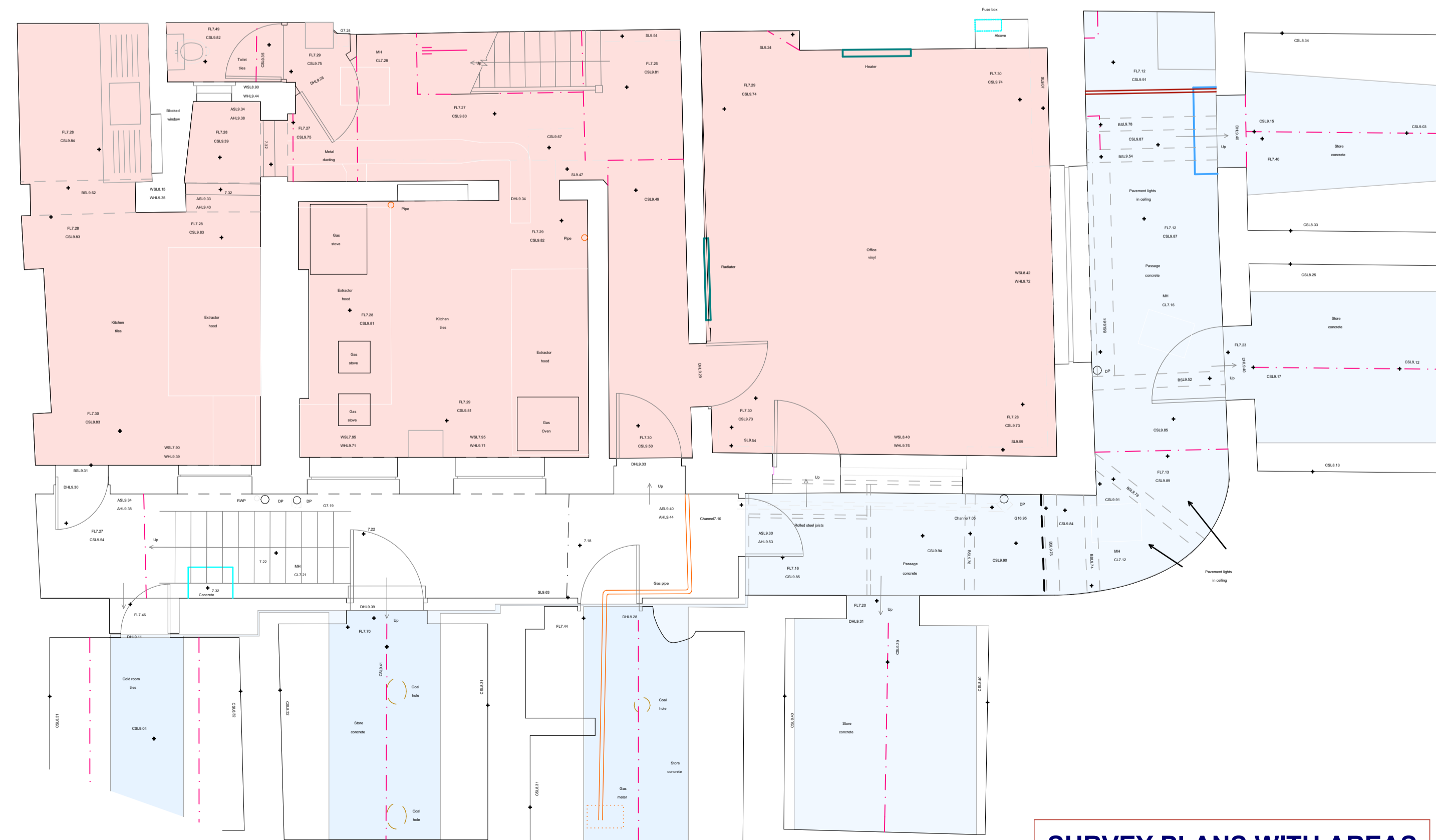
RESIDENTIAL 16.4 m² TOTAL 16.4 m²
FOURTH FLOOR



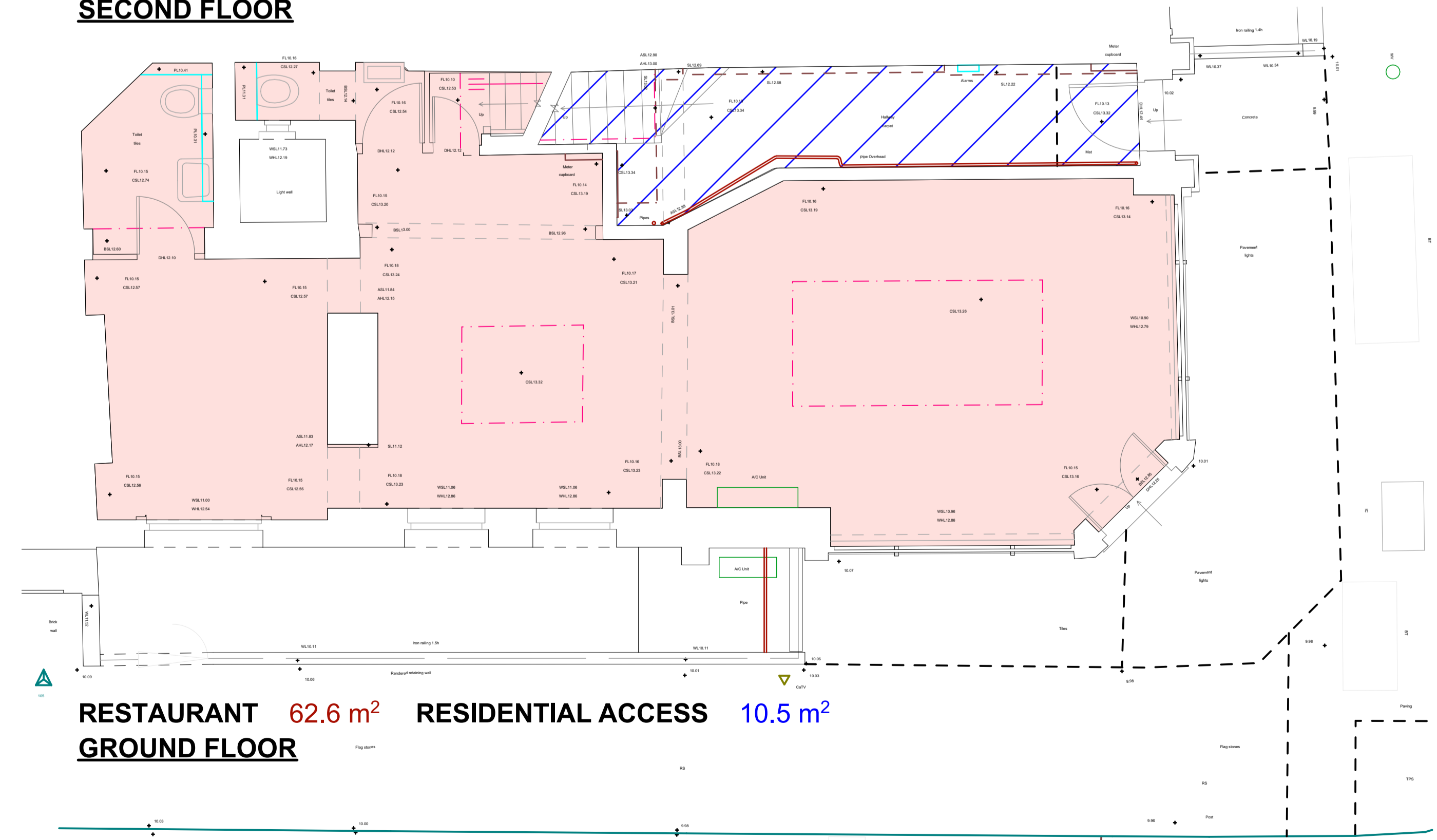
RESIDENTIAL 65.4 m² TOTAL 58.4 m²
FIRST FLOOR



RESIDENTIAL 49.4 m² TOTAL 55.2 m²
SECOND FLOOR



RESTAURANT 69.0 m² plus under pavement lights & road 46.8 m²



RESTAURANT 62.6 m² RESIDENTIAL ACCESS 10.5 m²
GROUND FLOOR

SURVEY PLANS WITH AREAS