

**Materials Key:**

- ① Red-Multi Facing Brickwork.  
NBS Ref: External multiple leaf wall above dpc masonry system. 25-10-55/123 Type A (Red Bricks)
- ② White Facing Brickwork.  
NBS Ref: External multiple leaf wall above dpc masonry system. 25-10-55/123 Type B (White Bricks)
- ③ High Pressure Laminate Rainscreen Cladding.  
NBS Ref: Drained and back-ventilated rainscreen cladding. 25-80-70/120 Type A (Trespa)
- ④ Porcelain Rainscreen Cladding.  
NBS Ref: Drained and back-ventilated rainscreen cladding. 25-80-70/120 Type B (Stone to Entrances)
- ⑤ Aluminium Window System.  
NBS Ref: Aluminium framed windows. 25-50-95/125 Types A-G
- ⑥ Aluminium Curtain Walling System.  
NBS Ref: Stick curtain walling system. 25-25-15/175 Type A (Curtain Walling to non residential areas)
- ⑦ Aluminium Curtain Walling System.  
NBS Ref: Stick curtain walling system. 25-25-15/175 Type B (Curtain Walling to penthouse level)
- ⑧ Balconies.  
NBS Ref: Pre-fabricated balcony structure. 20-05-80/140.
- ⑨ Laminated Glazed Balustrading.  
NBS Ref: Balustrade and guarding system. 25-25-10/110 Type A
- ⑩ Powder Coated Steel Balustrading.  
NBS Ref: Balustrade and guarding system. 25-25-10/110 Type B
- ⑪ Timber Cladding.  
NBS Ref: Timber weatherboarding system. 25-80-95/195
- ⑫ Timber Screening.  
NBS Ref: TBC
- ⑬ Metallic Bronze Alucobond Cladding.  
NBS Ref: Rigid sheet cladding system. 25-80-76/170
- ⑭ Glazed Facing Brickwork.  
NBS Ref: External multiple leaf wall above dpc masonry system. 25-10-55/TBC
- ⑮ Penthouse Solid Privacy Screen.  
NBS Ref: TBC

D	30.07.14	All Window and Door Tags Added	PH	DRJ
C	20.06.13	Materials key amended	MDB	JA
B	09.04.13	Issued for Tender	AKS	JA
A	25.04.13	Value Engineering Update	AKS	JA
No.	Date	Description	By	Ck'd



PROJECT  
West Hampstead Square

TITLE  
Block D Elevations Sheet 2

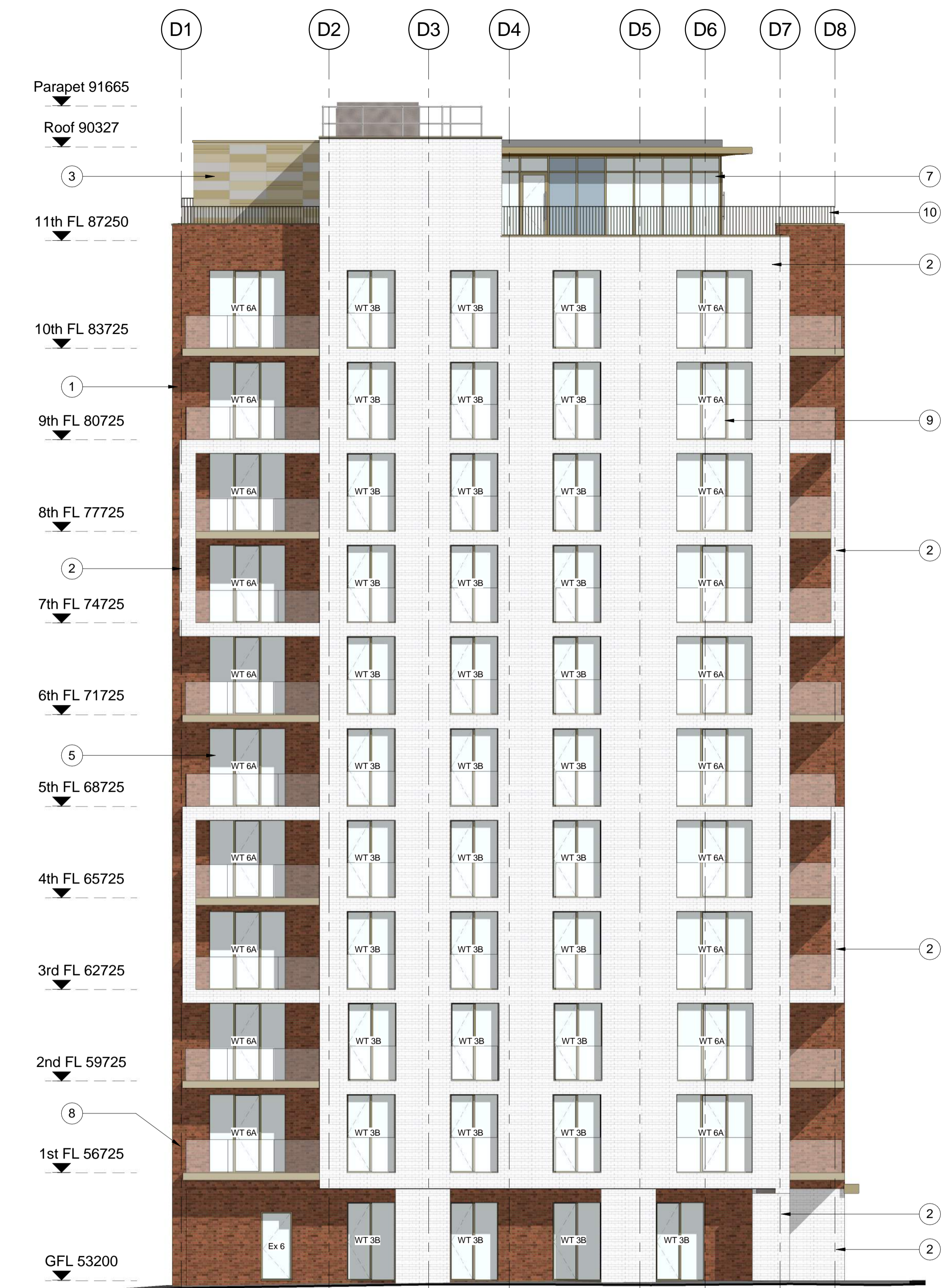
DRAWING STATUS  
For Construction

DRAWN	AKS	CHECKED	MB
SCALE	As indicated @ A1		
DATE	20/02/13		

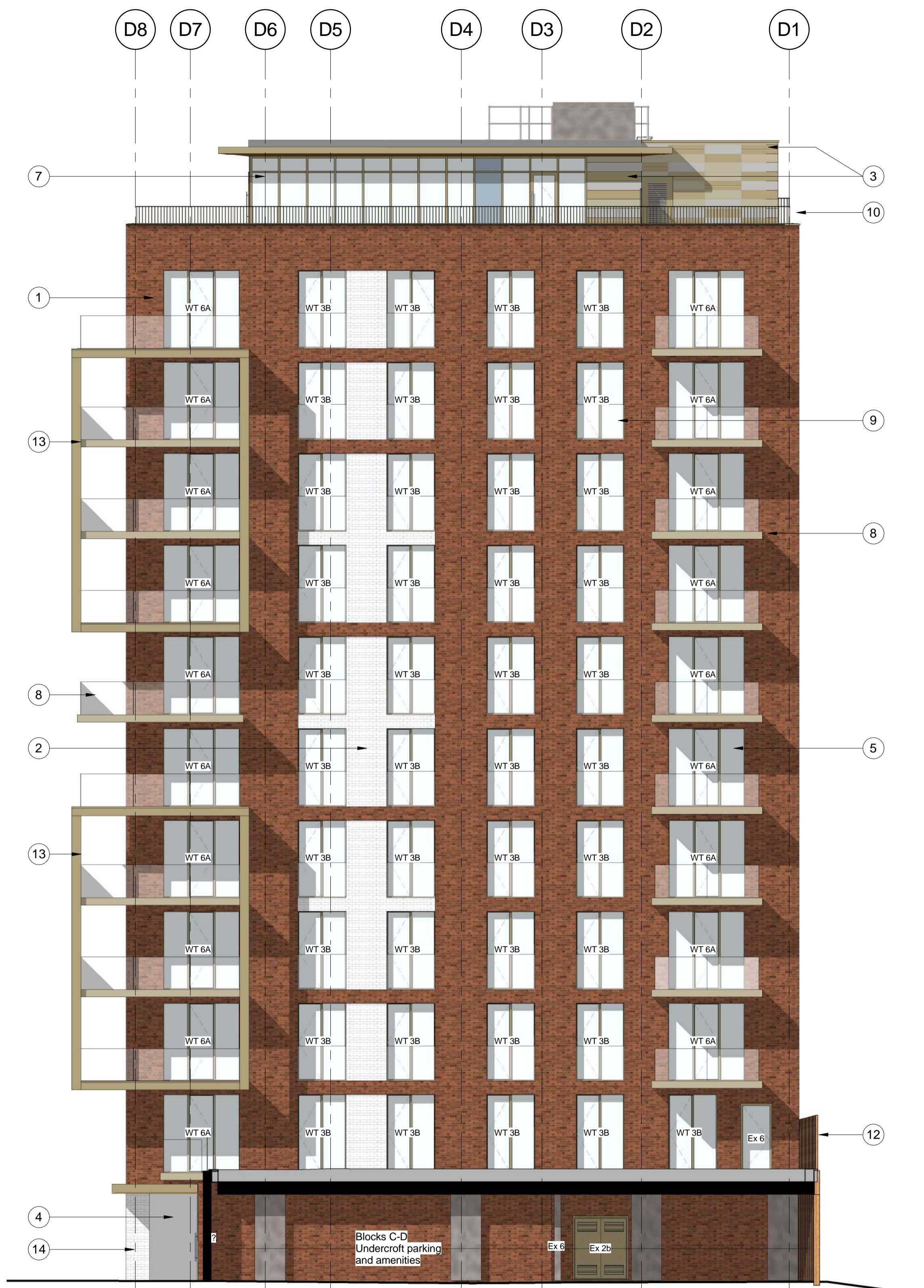


South Building, Staple Inn Buildings  
London, WC1V 7PZ

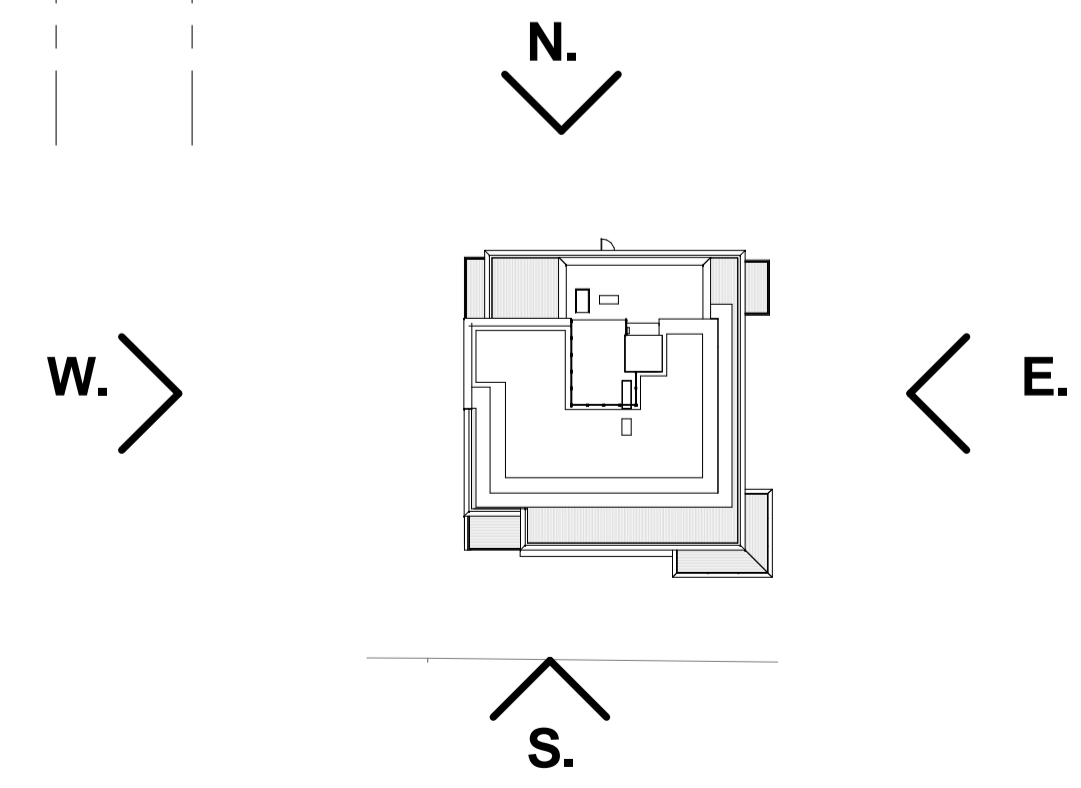
JOB NO.	DRAWING NO.	REV
12-316	A00-D22	D



④ Block D West  
1 : 100



③ Block D East  
1 : 100



⑤ Block D Key Plan  
1 : 500