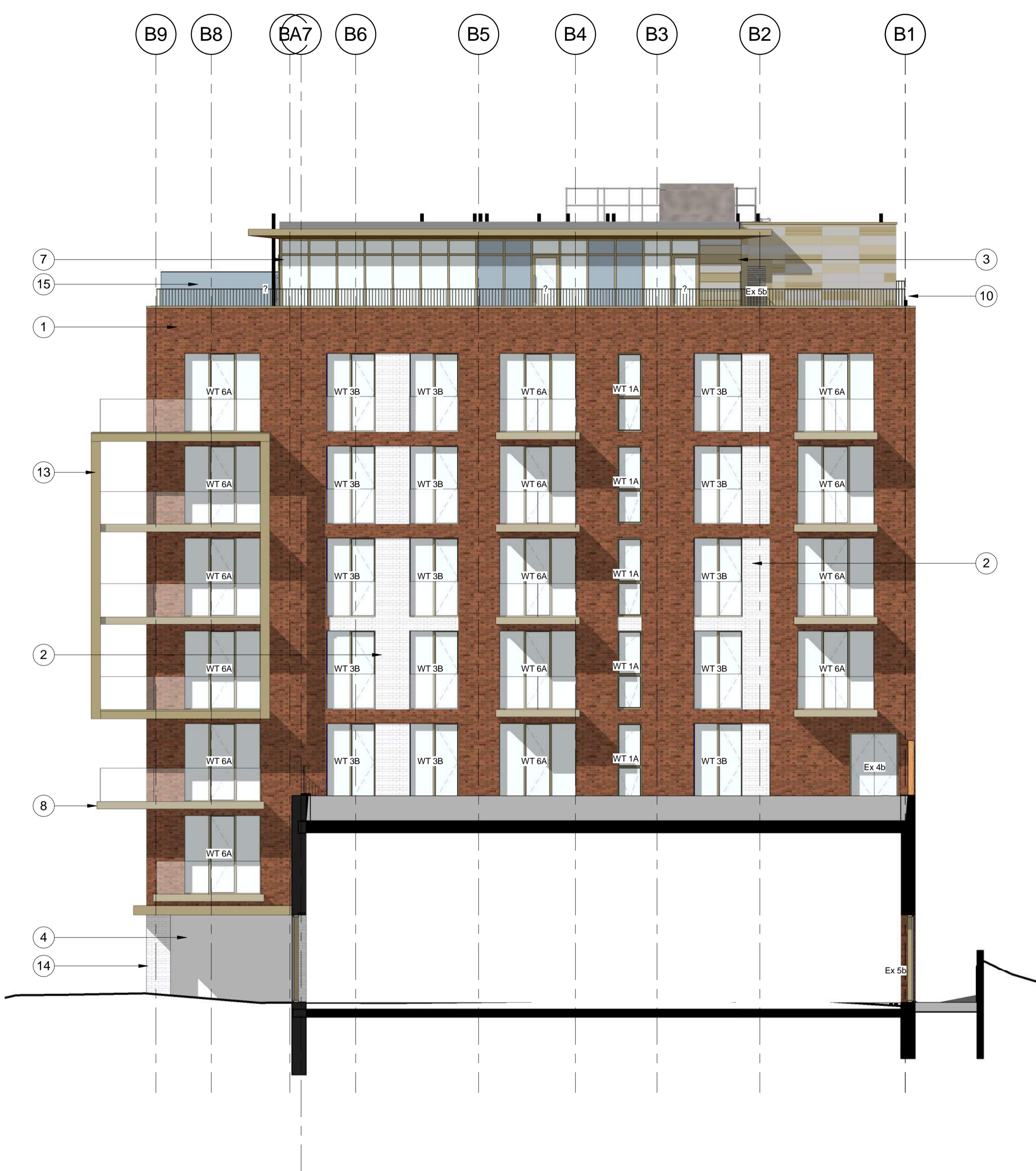


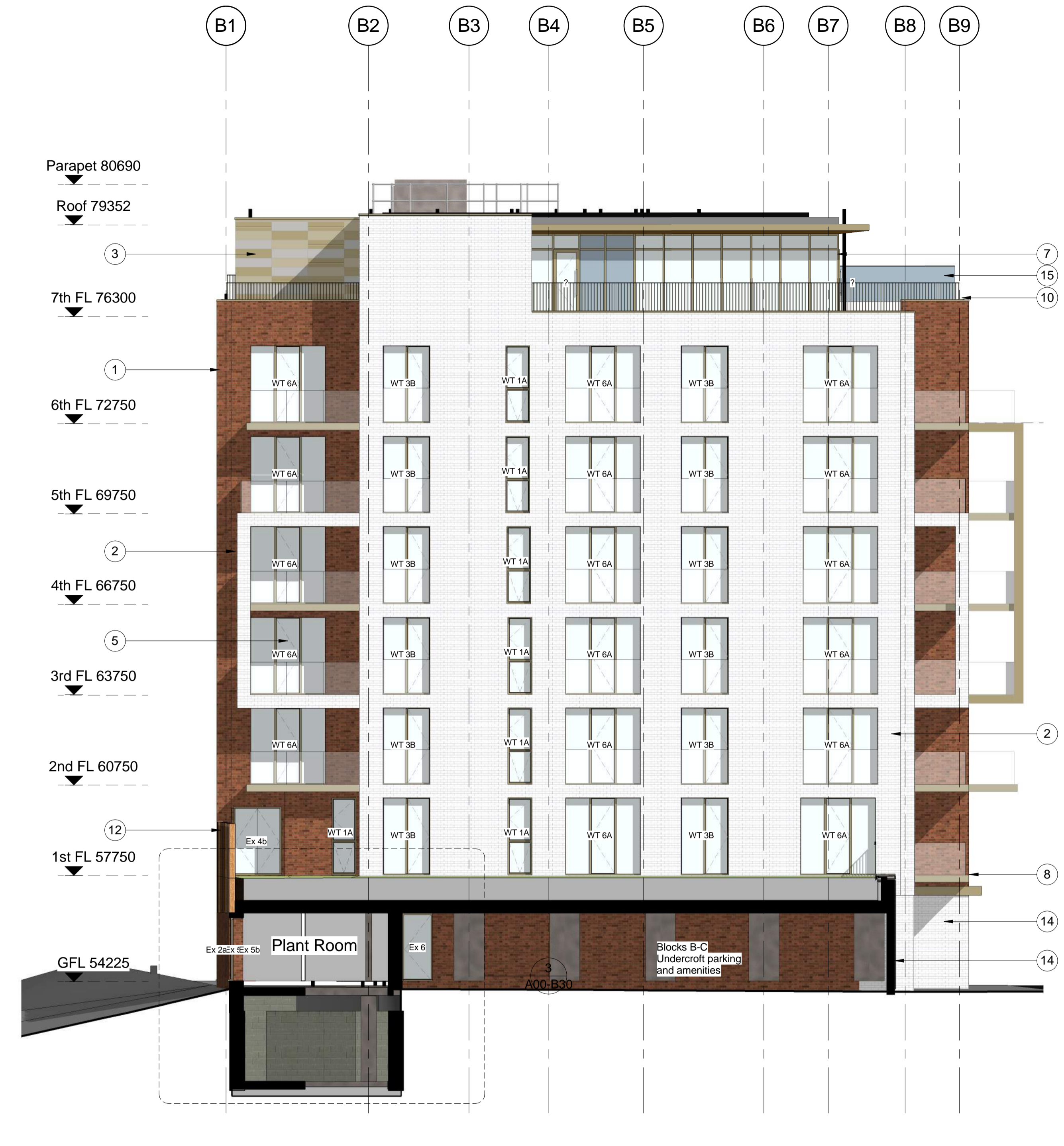
© WCEC ARCHITECTS - DISCLAIMER
 This drawing is copyright and shall not be reproduced or used for any other purpose without the written permission of the architects.
 It is the contractors responsibility to ensure full compliance with the Building Regulations.
 Do not scale from this drawing, use figured dimensions only.
 It is the contractors responsibility to check and verify all dimensions on site.
 Any discrepancies to be reported immediately.
 IF IN DOUBT ASK.
 Materials not in conformity with relevant British or European Standards/Codes of practice or materials known to be deleterious to health & safety must not be used or specified on this project.
 Materials known to contain asbestos contaminated materials (ACM's) in the manufacture or installation process have not been specified and must not be used on this project.

Materials Key:

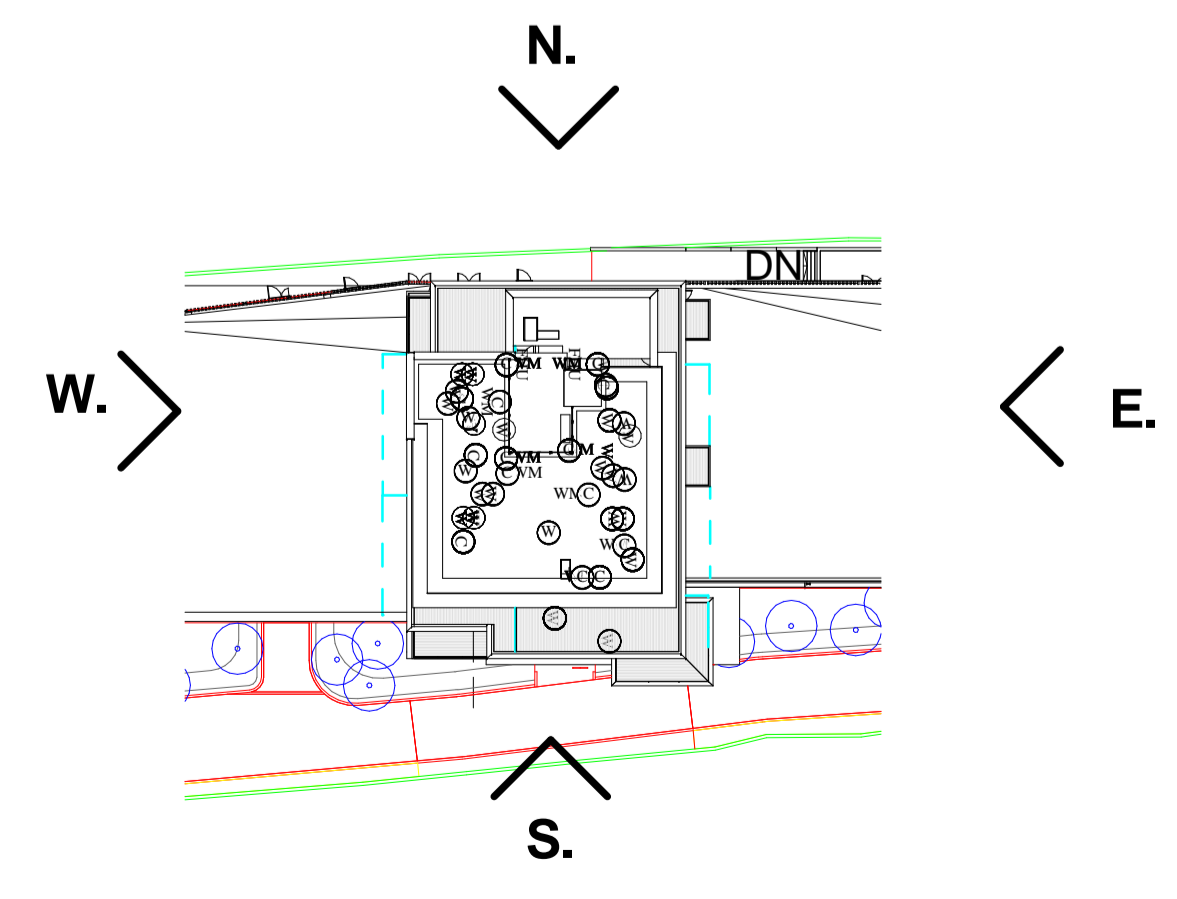
- ① Red-Multi Facing Brickwork.
NBS Ref: External multiple leaf wall above dpc masonry system. 25-10-55/123 Type A (Red Bricks)
- ② White Facing Brickwork.
NBS Ref: External multiple leaf wall above dpc masonry system. 25-10-55/123 Type B (White Bricks)
- ③ High Pressure Laminate Rainscreen Cladding.
NBS Ref: Drained and back-ventilated rainscreen cladding. 25-80-70/120 Type A (Trespa)
- ④ Porcelain Rainscreen Cladding.
NBS Ref: Drained and back-ventilated rainscreen cladding. 25-80-70/120 Type B (Stone to Entrances)
- ⑤ Aluminium Window System.
NBS Ref: Aluminium framed windows. 25-50-95/125 Types A-G
- ⑥ Aluminium Curtain Walling System.
NBS Ref: Stick curtain walling system. 25-25-15/175 Type A (Curtain Walling to non residential areas)
- ⑦ Aluminium Curtain Walling System.
NBS Ref: Stick curtain walling system. 25-25-15/175 Type B (Curtain Walling to penthouse level)
- ⑧ Balconies.
NBS Ref: Pre-fabricated balcony structure. 20-05-80/140.
- ⑨ Laminated Glazed Balustrading.
NBS Ref: Balustrade and guarding system. 25-25-10/110 Type A
- ⑩ Powder Coated Steel Balustrading.
NBS Ref: Balustrade and guarding system. 25-25-10/110 Type B
- ⑪ Timber Cladding.
NBS Ref: Timber weatherboarding system. 25-80-95/195
- ⑫ Timber Screening.
NBS Ref: TBC
- ⑬ Metallic Bronze Alucobond Cladding.
NBS Ref: Rigid sheet cladding system. 25-80-76/170
- ⑭ Glazed Facing Brickwork.
NBS Ref: External multiple leaf wall above dpc masonry system. 25-10-55/TBC
- ⑮ Penthouse Solid Privacy Screen.
NBS Ref: TBC



3 Block B East
1 : 100



4 Block B West
1 : 100



1 Block B Key Plan.
1 : 500

| No | Date | Description | By | Ckd |
|----|----------|-----------------------------------|-----|-----|
| E | 02.09.14 | Minor Amendment to Block B Facade | PH | DRJ |
| D | 30.07.14 | All Window and Door Tags Added | PH | DRJ |
| C | 20.06.13 | Materials key amended | MDB | JA |
| B | 09.04.13 | Issued for Tender | AKS | JA |
| A | 25.04.13 | Value Engineering Update | AKS | JA |



PROJECT
West Hampstead Square

TITLE
Block B Elevations Sheet 2

| DRAWING STATUS | | | |
|------------------|-------------------|---------|----|
| For Construction | | | |
| DRAWN | AKS | CHECKED | MB |
| SCALE | As Indicated @ A1 | | |
| DATE | 20/02/13 | | |

wcec architects
 South Building, Staple Inn Buildings
 London, WC1V 7PZ

t:020 3388 0019, e: email@wcec.co.uk, www.wcec.co.uk

| JOB NO. | DRAWING NO. | REV |
|---------|-------------|-----|
| 12-316 | A00-B22 | E |