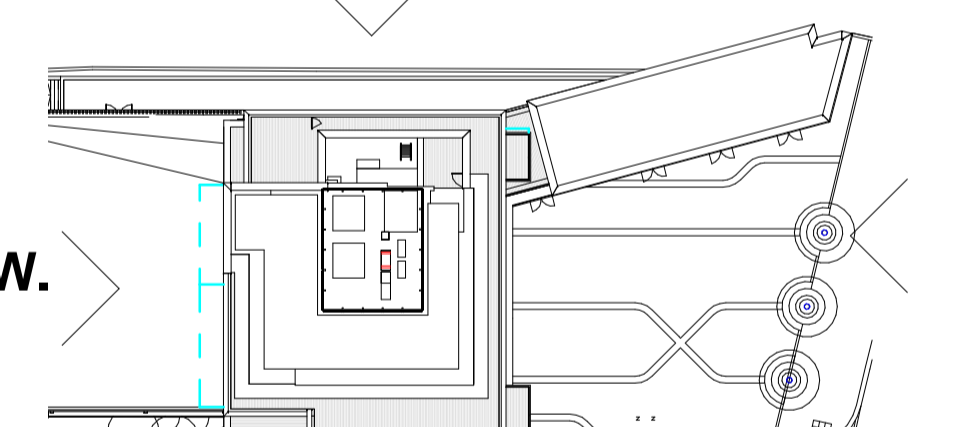
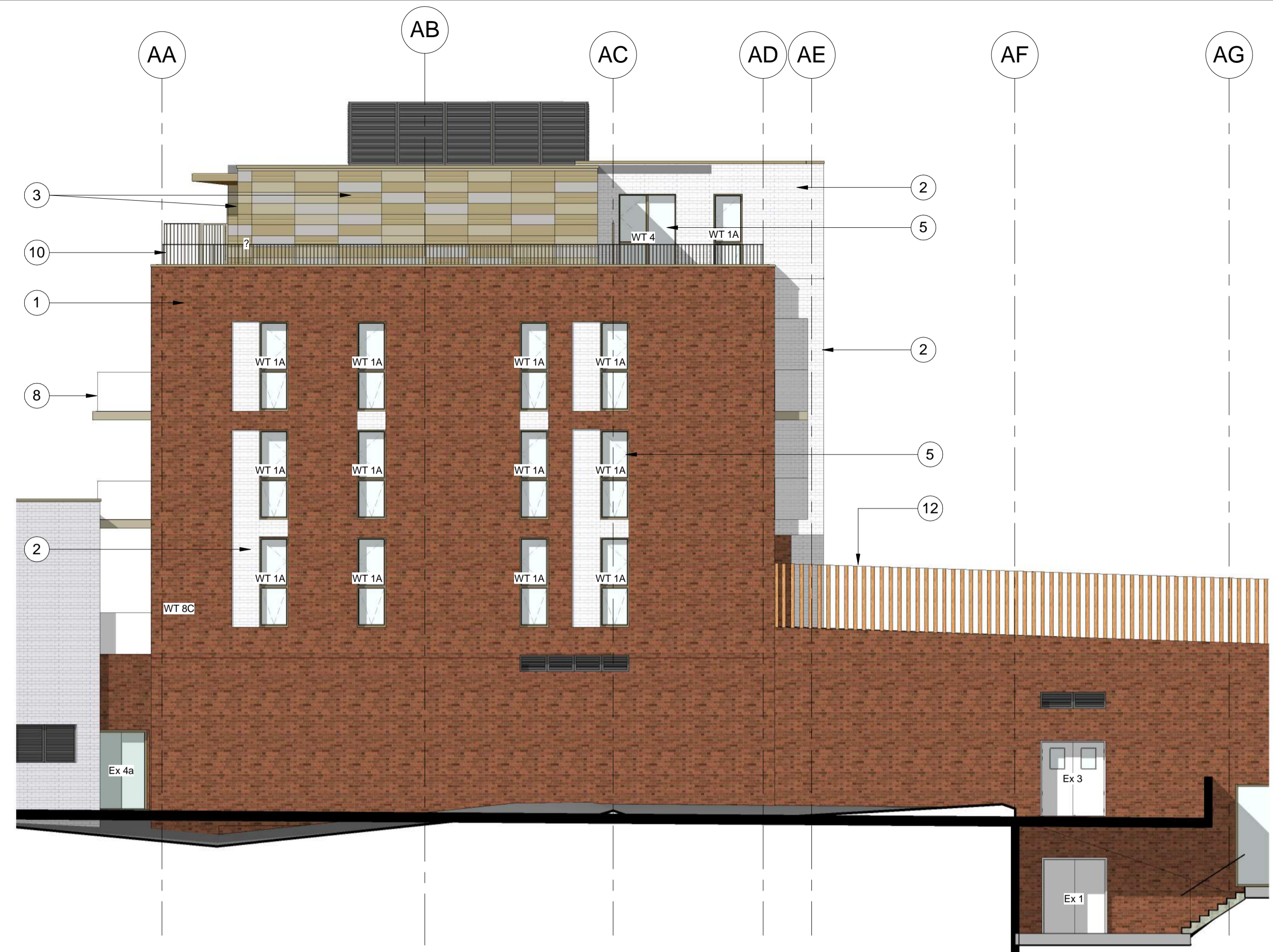


This drawing is copyright and shall not be reproduced or used for any other purpose without the written permission of the architects. It is the contractors responsibility to ensure full compliance with all other related drawings and documentation. It is the contractors responsibility to check and verify all dimensions on site. Do not scale from this drawing, use figured dimensions only. Any discrepancies to be reported immediately. IF IN DOUBT ASK. Materials not in conformity with relevant British or European Standards/Code of practice or materials known to be deleterious to health & safety must not be used or specified on this project. Materials known to contain asbestos contaminated materials (ACM's) in the manufacture or installation process have not been specified and must not be used on this project.

Materials Key:

- ① Red-Multi Facing Brickwork
NBS Ref: External multiple leaf wall above dpc masonry system. 25-10-55/123 Type A (Red Bricks)
- ② White Facing Brickwork
NBS Ref: External multiple leaf wall above dpc masonry system. 25-10-55/123 Type B (White Bricks)
- ③ High Pressure Laminate Rainscreen Cladding
NBS Ref: Drained and back-ventilated rainscreen cladding. 25-80-70/120 Type A (Trespa)
- ④ Porcelain Rainscreen Cladding
NBS Ref: Drained and back-ventilated rainscreen cladding. 25-80-70/120 Type B (Stone to Entrances)
- ⑤ Aluminium Window System
NBS Ref: Aluminium framed windows. 25-50-95/125 Types A-G
- ⑥ Aluminium Curtain Walling System
NBS Ref: Stick curtain walling system. 25-25-15/175 Type A (Curtain Walling to non residential areas)
- ⑦ Aluminium Curtain Walling System
NBS Ref: Stick curtain walling system. 25-25-15/175 Type B (Curtain Walling to penthouse level)
- ⑧ Balconies
NBS Ref: Pre-fabricated balcony structure. 20-05-80/140.
- ⑨ Laminated Glazed Balustrading
NBS Ref: Balustrade and guarding system. 25-25-10/110 Type A
- ⑩ Powder Coated Steel Balustrading
NBS Ref: Balustrade and guarding system. 25-25-10/110 Type B
- ⑪ Timber Cladding
NBS Ref: Timber weatherboarding system. 25-80-95/195
- ⑫ Timber Screening
NBS Ref: TBC
- ⑬ Metallic Bronze Alucobond Cladding
NBS Ref: Rigid sheet cladding system. 25-80-76/170
- ⑭ Glazed Facina Brickwork
NBS Ref: External multiple leaf wall above dpc masonry system. 25-10-55/TBC
- ⑮ Penthouse Solid Privacy Screen
NBS Ref: TBC



30.09.14	Window types 3J, 4E and 8C updated to first floor.	PH	DRJ	
H	26.09.14 Additional Vent above external door	PH	DRJ	
G	09.09.14 Door omitted to following	PH	DRJ	
F	07.09.14 Window 1A, 3A, 3B, 4, 6A & 8A updated. Minor amendment to block A window position. Louvres added to Block A retail	PH	DRJ	
S.				
E	30.07.14 All Window and Door Tags Added	PH	DRJ	
D	05.07.13 Elevations updated to reflect plan updates.	MDB	JA	
C	20.06.13 Materials key amended	MDB	JA	
B	09.04.13 Issued for Tender	AKS	JA	
A	25.04.13 Value Engineering Update	AKS	JA	
No	Date	Description	By	Ckd



PROJECT
West Hampstead Square

TITLE
Block A Elevations

DRAWING STATUS
For Construction

DRAWN AKS CHECKED MB
SCALE As indicated @ A1
DATE 20/02/13



South Building, Staple Inn Buildings
London, WC1V 7PZ
t:020 3388 0019, e: email@wcec.co.uk, www.wcec.co.uk

JOB NO.	DRAWING NO.	REV
12-316	A00-A21	I