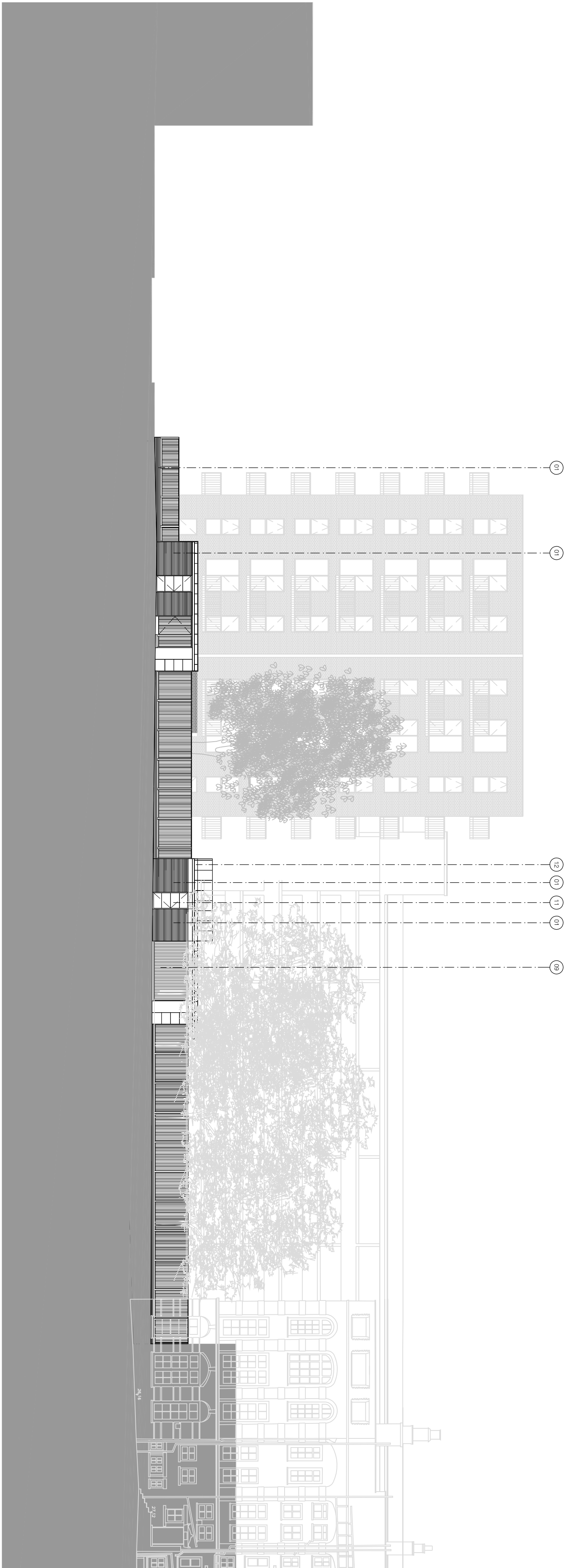


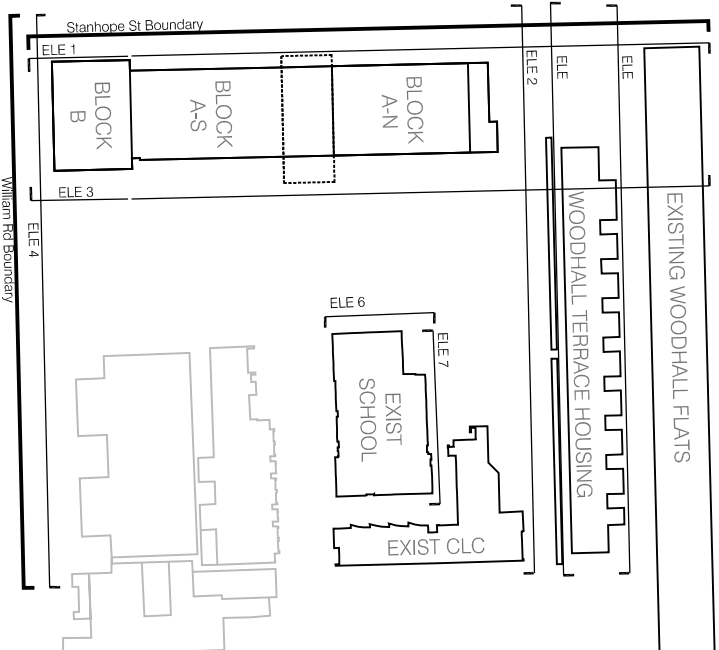
1 STANHOPE STREET BOUNDARY

Scale: 1:200



2 WILLIAM ROAD BOUNDARY

Scale: 1:200



- MA TERIALS KEY
- 01. Powder coated timber - steel horizontal and balustrade
  - 02. Powder coated timber - steel horizontal and balustrade
  - 03. Timber on steel framed balcony
  - 04. Powder coated aluminium window
  - 05. Powder coated aluminium window - coated steel frame and glazing
  - 06. Red brick - recessed soldier course
  - 07. Red brick - recessed soldier course
  - 08. Powder coated aluminium glazed door
  - 09. Powder coated aluminium glazed door
  - 10. Red brick - clad / natural finish sandwich boarding
  - 11. Metal panels / Metal panel door
  - 12. Standing seam zinc
  - 13. Standing seam zinc
  - 14. Cladding - panel
  - 15. Stained timber - deck
  - 16. Curtain walling
  - 17. Powder coated / galvanneal steel gate
  - 18. Buff brick - soldier course
  - 19. Buff brick - soldier course
  - 20. Powder coated / galvanneal steel railings
- 0 1 2 3 4 5 10 15 20 METRES
- 0 5 10 15 20 30 40 50 60 FEET

A		2-4.2012	Hall opening revised + graphics revised	MM	CB
rev	date	description		mm	cb
Drawing Status					
PLANNING					
Dispersal Ward					
London NI SX					
F: 020 7358 7777					
E: 020 7358 0710					
URL: www.pra.co.uk					
E: 020 7358 0710					
PROJECT					
NETLEY	MR	CB	1:200 @ A1	13.03.12	A
BOUNDARY CONDITION PROPOSED	09_161	PL(00)353			

PTEa

ROLAND THOMAS EDWARDS

architects