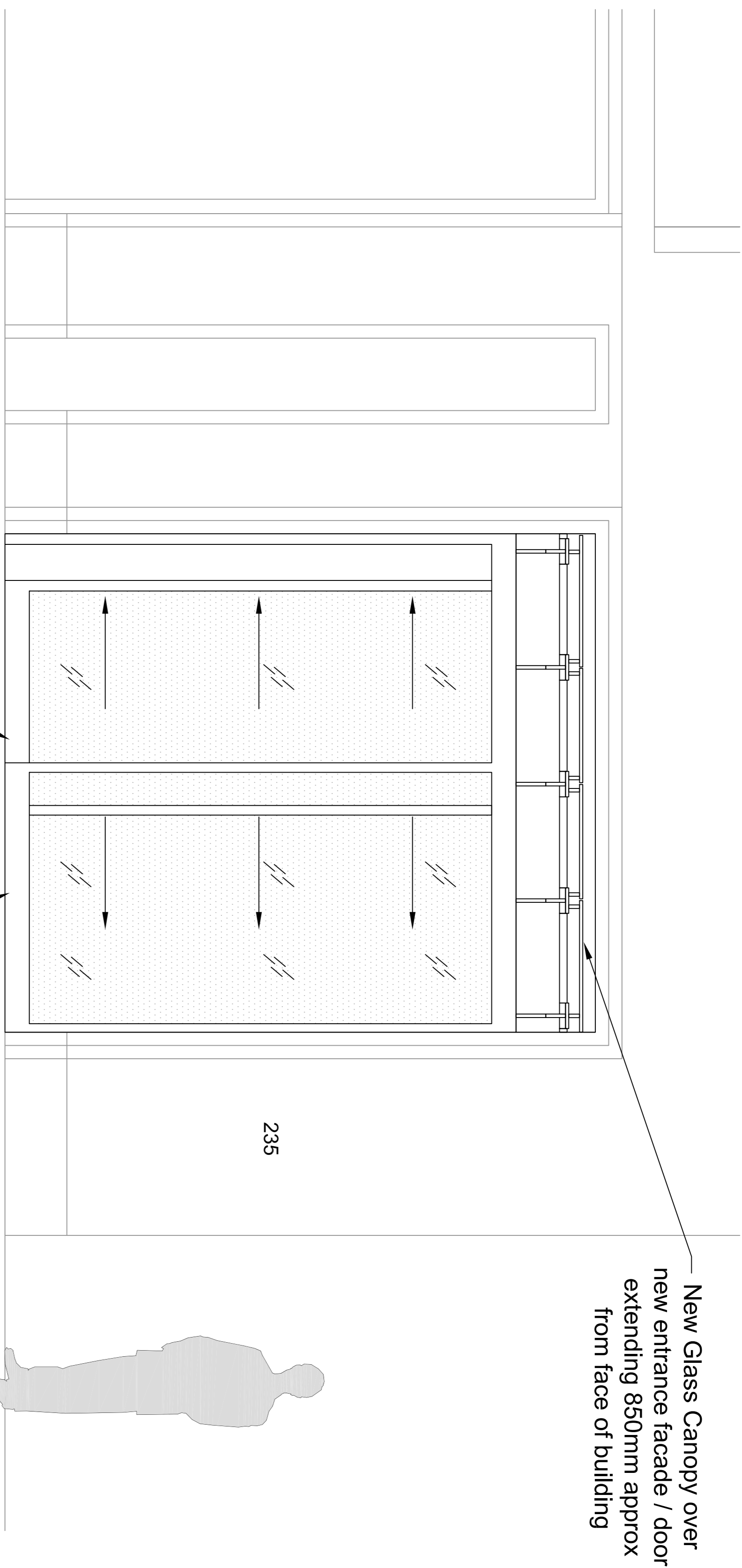
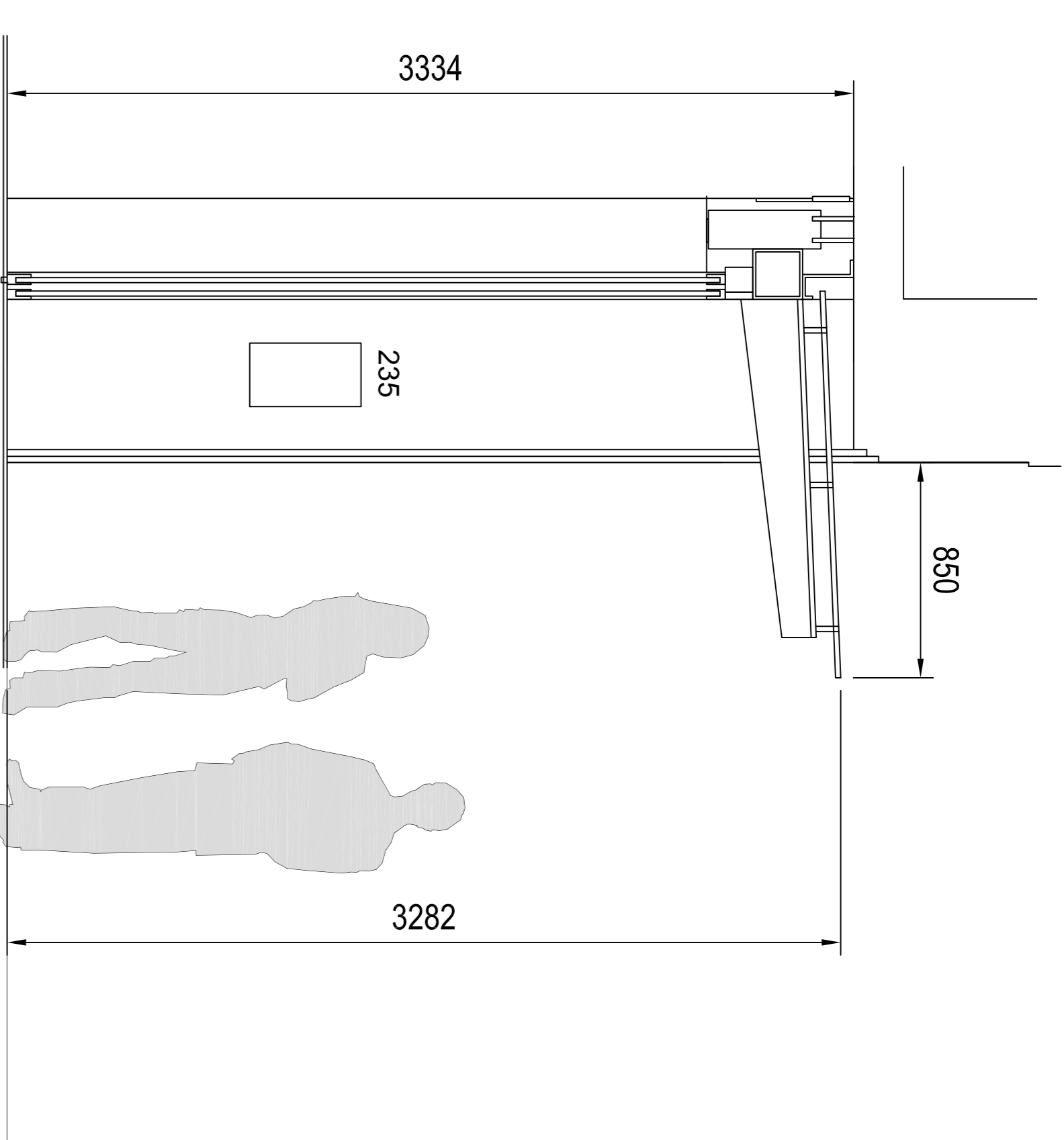


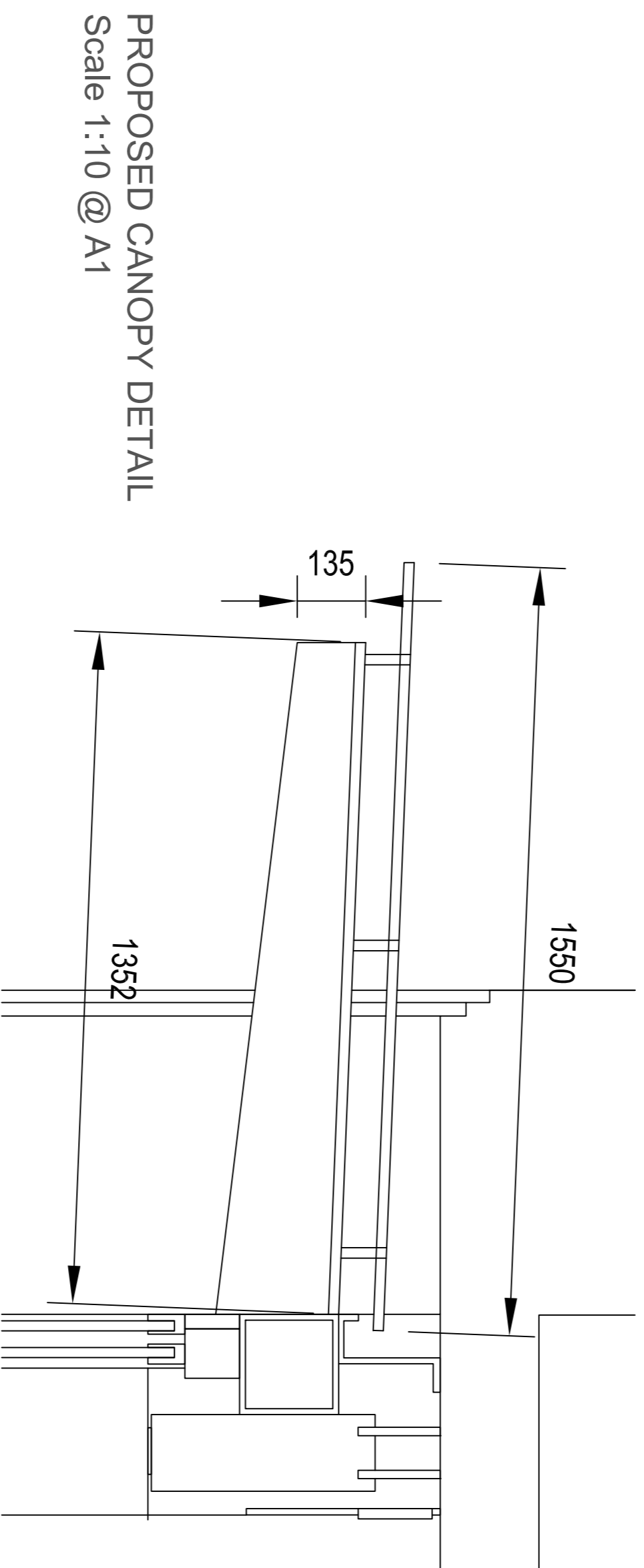
235 HIGH HOLBORN, LONDON



ELEVATION: PROPOSED ENTRANCE DOORS & CANOPY
Scale 1:20 @ A1



CROSS SECTION: PROPOSED ENTRANCE DOORS & CANOPY
Scale 1:20 @ A1



PROPOSED CANOPY DETAIL
Scale 1:10 @ A1

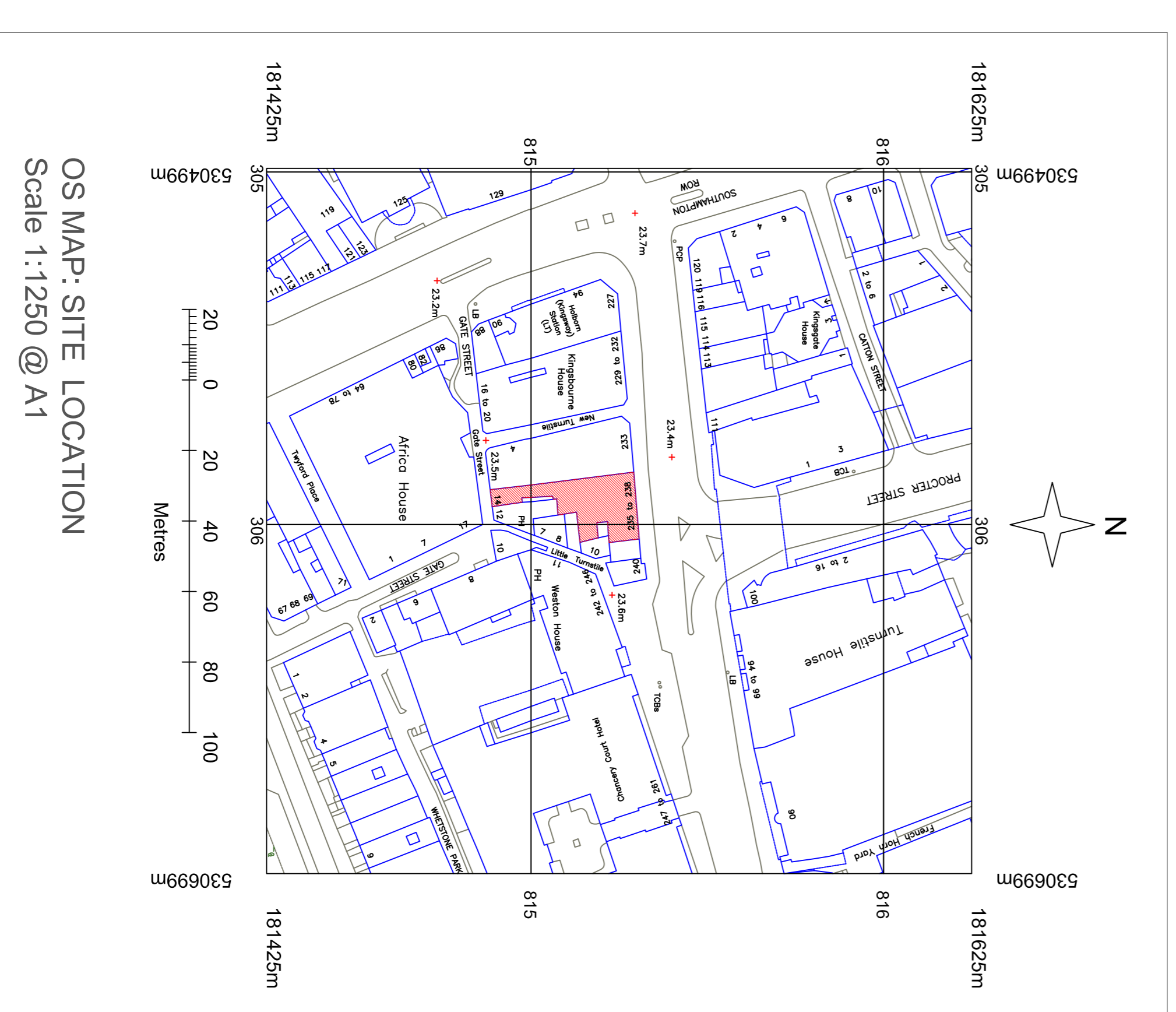
NOTES ON ENTRANCE FACADE / DOORS & OVER ENTRANCE CANOPY:

- FACADE / DOORS:**
- 1) FULL HEIGHT 20mm THICK TOUGHENED LAMINATED GLASS WITH GRADUATED SMOKED VINYL DECAL APPLIED TO INSIDE FACE OF GLASS (FIXED FACADE PANEL & SLIDING DOOR)
 - 2) DOOR AND FACADE FRAME TO BE LIGHT GREY ANODISED ALUMINIUM WITH MATCHING HEADER COVER TO CONCEAL STRUCTURAL BEAM, GLAZING CHANNEL, SLIDING DOOR MECHANISM AND GUTTERING
 - 3) EXISTING BUILDING PLASTERS TO REMAIN
 - 4) NEW WARM GREY ANODISED ALUMINIUM LETTERING FIXED TO BUILDING PLASTERS WITH ADHESIVE

- GLASS CANOPY:**
- 1) NEW CANOPY TO BE SUPPORTED BY STRUCTURAL BEAM RUNNING FULL WIDTH OF ENTRANCE DOORS
 - 2) 20mm THICK TOUGHENED LAMINATED GLASS CANOPY ANGLED DOWN TOWARDS FACADE.
 - 3) LIGHT GREY ANODISED ALUMINIUM CANOPY SUPPORT ARMS FIXED TO STRUCTURAL BEAM WITH ALL FIXINGS CONCEALED BY COVER PLATE
 - 4) LIGHT GREY ANODISED ALUMINIUM FIXINGS TO HOLD GLASS (PILKINGTON ref: PLANAR 905J) TO SUPPORT ARMS
 - 5) RAINWATER TO RUN OF INTO CONTINUOUS GALVANISED METAL FLASHING (FULL WIDTH OF DOORS) AND ONTO EXISTING CONCEALED DOWNPIPE

NB FOR CONSTRUCTION DETAILS OF NEW FACADE AND CANOPY REFER TO DESIGNDETAIL DRAWINGS BY JHP DESIGN

PLANNING PERMISSION: PROPOSED ENTRANCE ARRANGEMENTS

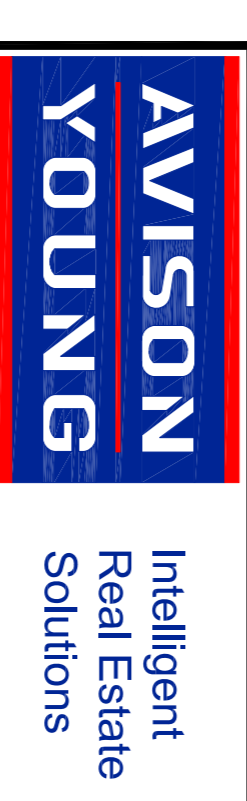


OS MAP: SITE LOCATION
Scale 1:1250 @ A1

This drawing is the property of Avison Young and must not be copied or reproduced without express written permission. Use figured dimensions only. All dimensions to be verified on site prior to commencing construction. Do not scale.

ISSUED FOR INFORMATION

REV	DESCRIPTION	DATE
-	PRELIMINARY ISSUE	02:10:14



London
tel +44 (0)20 7101 0200
19 Margaret Street, London W1W 8RR
Thames Valley
tel +44 (0)1494 540 000
Hampton Chase, Little Hampton Great Missenden
Bucks HP16 9PT
avisonyoung.com

Client: GLOUCESTER INVESTMENTS

Project Title: 235 HIGH HOLBORN LONDON WC1

Dwg Title: PROPOSED ENTRANCE DRAWING GROUND FLOOR

Scale:	Date:	Rev:
As Shown	02/10/14	

Dwg No:	Drawn by:	Checked by:
2229/ENT/GA/01	AR	JB

© Avison Young 2014
All rights reserved. No part of this document may be reproduced, stored in a retrieval system, or transmitted, in any form, or by any means, electronic, mechanical, photocopying, recording or otherwise, without prior permission in writing from Avison Young.