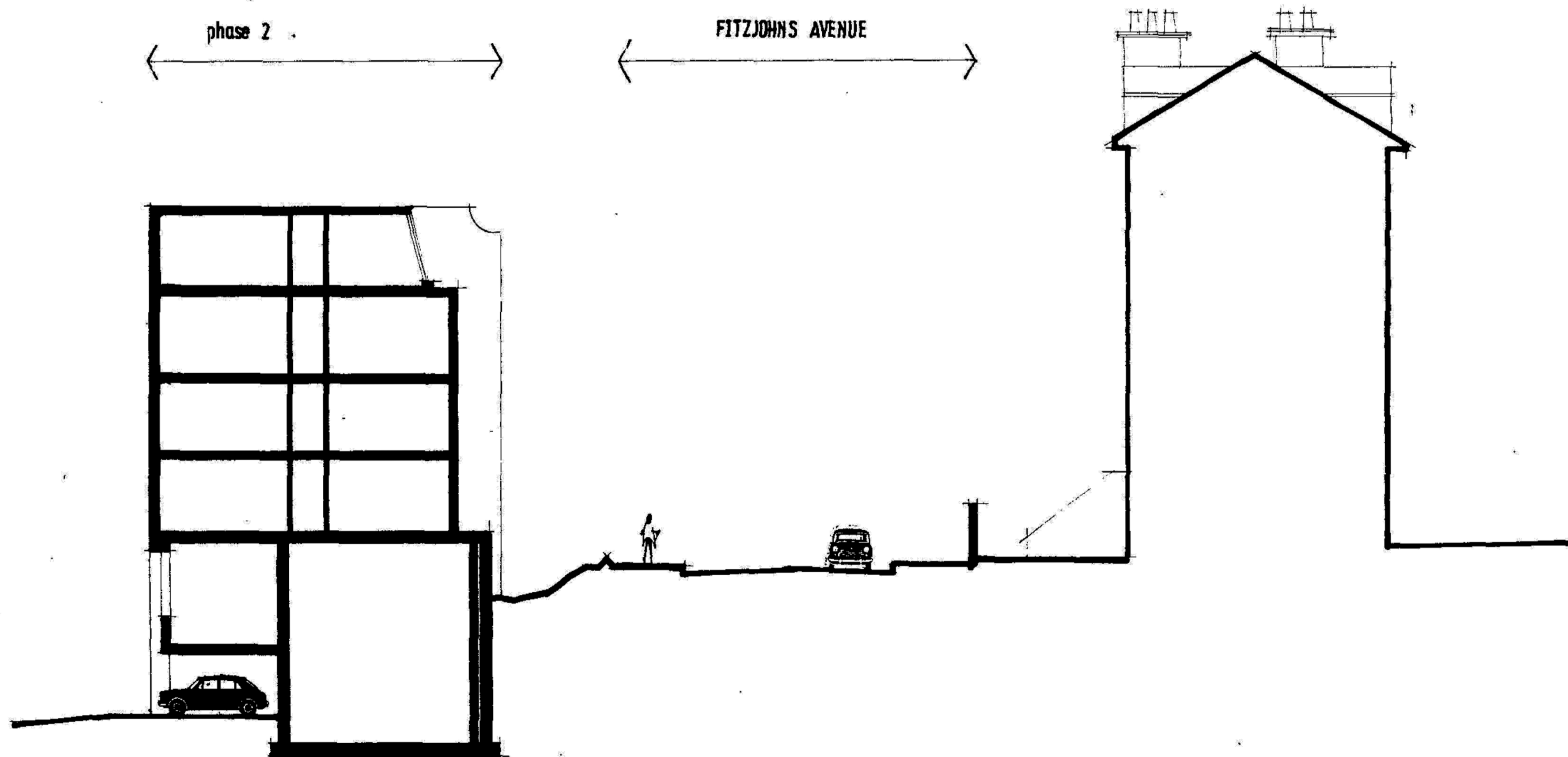
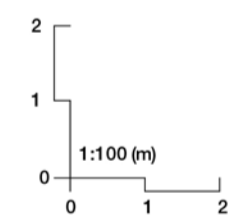


SECTION D-D



SECTION 1/16" to 1/0"



Sergison Bates architects LLP  
Existing - Section DD

Fitzjohns Avenue, NW3  
Planning Technical Documents

Architects	Date	Scale
Sergison Bates architects 34 Clerkenwell Close London EC1R 0AU United Kingdom	15/12/14	1:100@A1 1:200@A3
Tel +44 (0)20 7255 1564 e-mail studio @sergisonbates.co.uk		

276/4178

Do not scale from this drawing  
All dimensions to be verified on site  
Limited Liability Partnership Registered in England & Wales  
No. OC317501 Registered office as above  
Drawing may be scaled for planning purposes