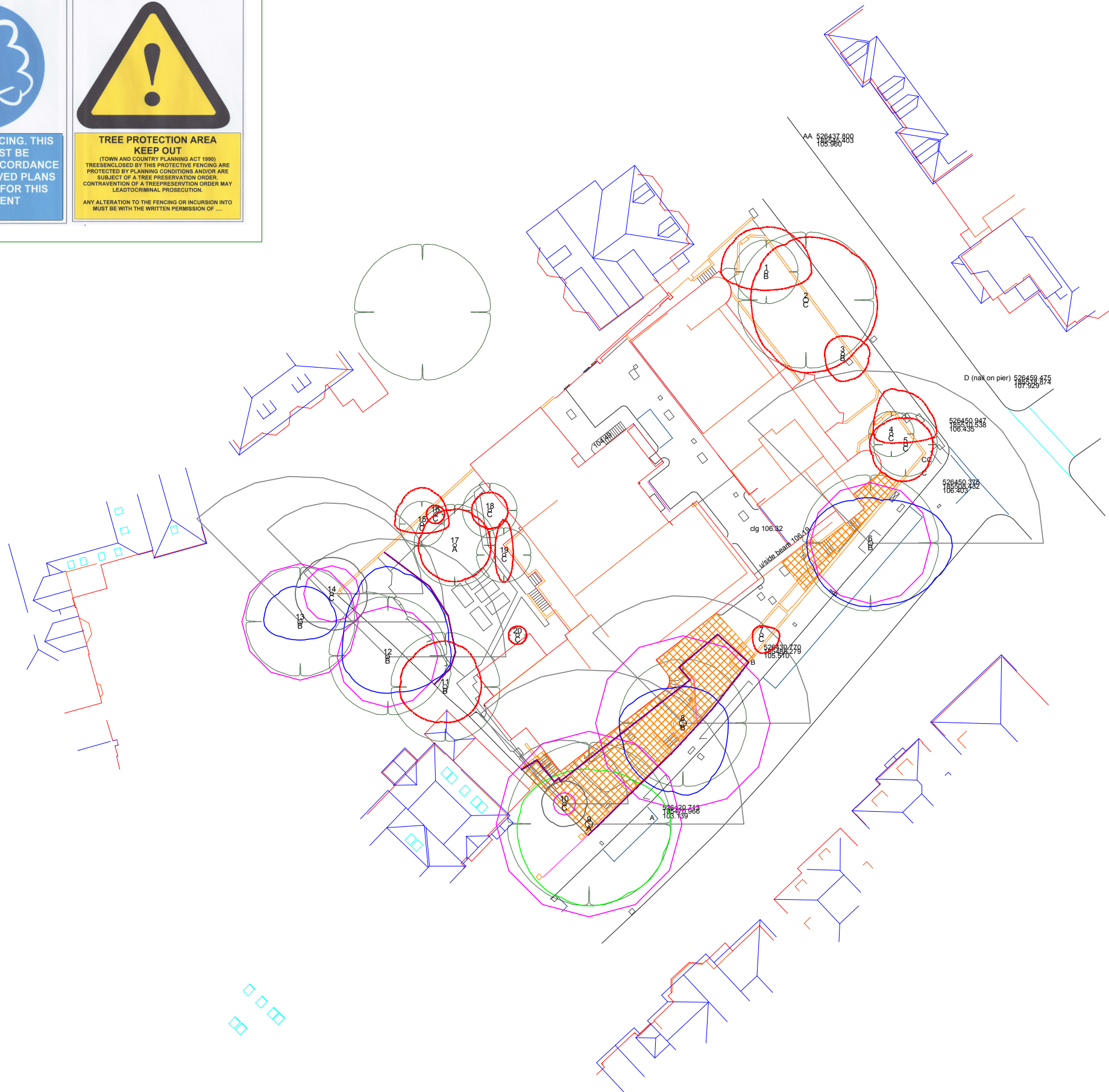


**APPENDIX 2**  
**10905/12090.**

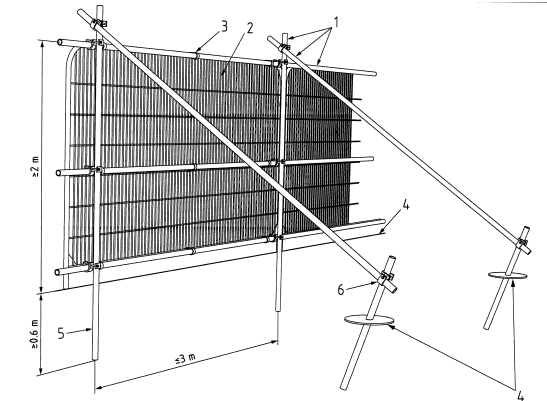
**TREE RETENTION REMOVAL AND PROTECTION PLAN**  
**(DEMOLITION)**

**TREE PROTECTION PLAN**  
**(CONSTRUCTION)**

## Tree Protection Fencing Signage



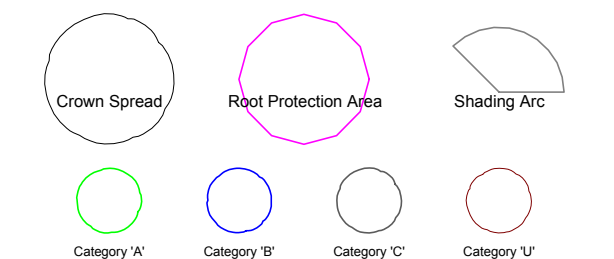
## Standard Tree Protection Fencing



- Key**
- 1 Standard scaffold poles
  - 2 Heavy gauge 2 m tall galvanized tube and welded mesh infill panels
  - 3 Panels secured to uprights and cross-members with wire ties
  - 4 Ground level
  - 5 Uprights driven into the ground until secure (minimum depth 0.6 m)
  - 6 Standard scaffold clamps

### Key

- Supervised demolition
- Protective fencing (Demolition)
- Trees to be removed



Unit 60, Aston Down,  
Stroud, Gloucestershire  
GL6 8GA  
Tel 01285 760466 Fax 01285 760983  
sales@treemaintenance.co.uk  
www.treemaintenance.co.uk

**Tree Protection, Removals and Protection Plan (Demolition)**  
79 Fitzjohns Avenue, Hampstead, London

SCALE :  
1 : 500

DATE :  
16/12/2014

MAP FILENAME : 12090/47950

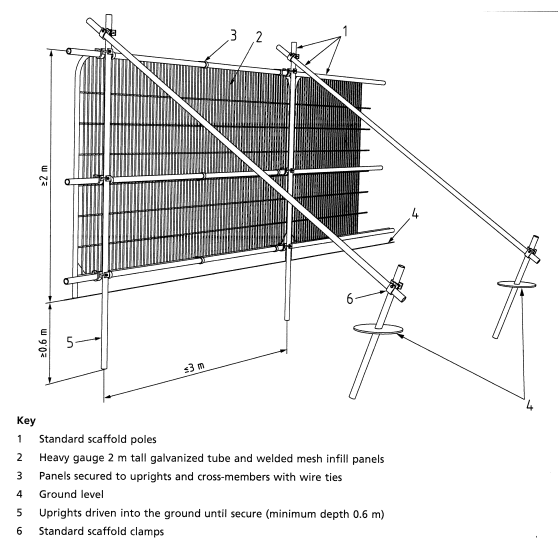
Based on revised Site Survey Plan M952  
dated 13 May 2014



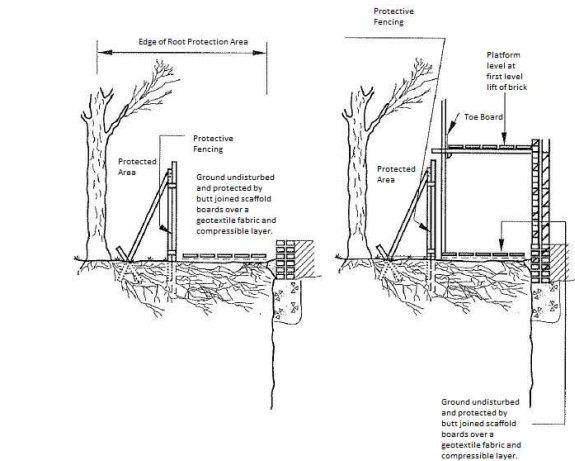
Tree Protection Fencing Signage



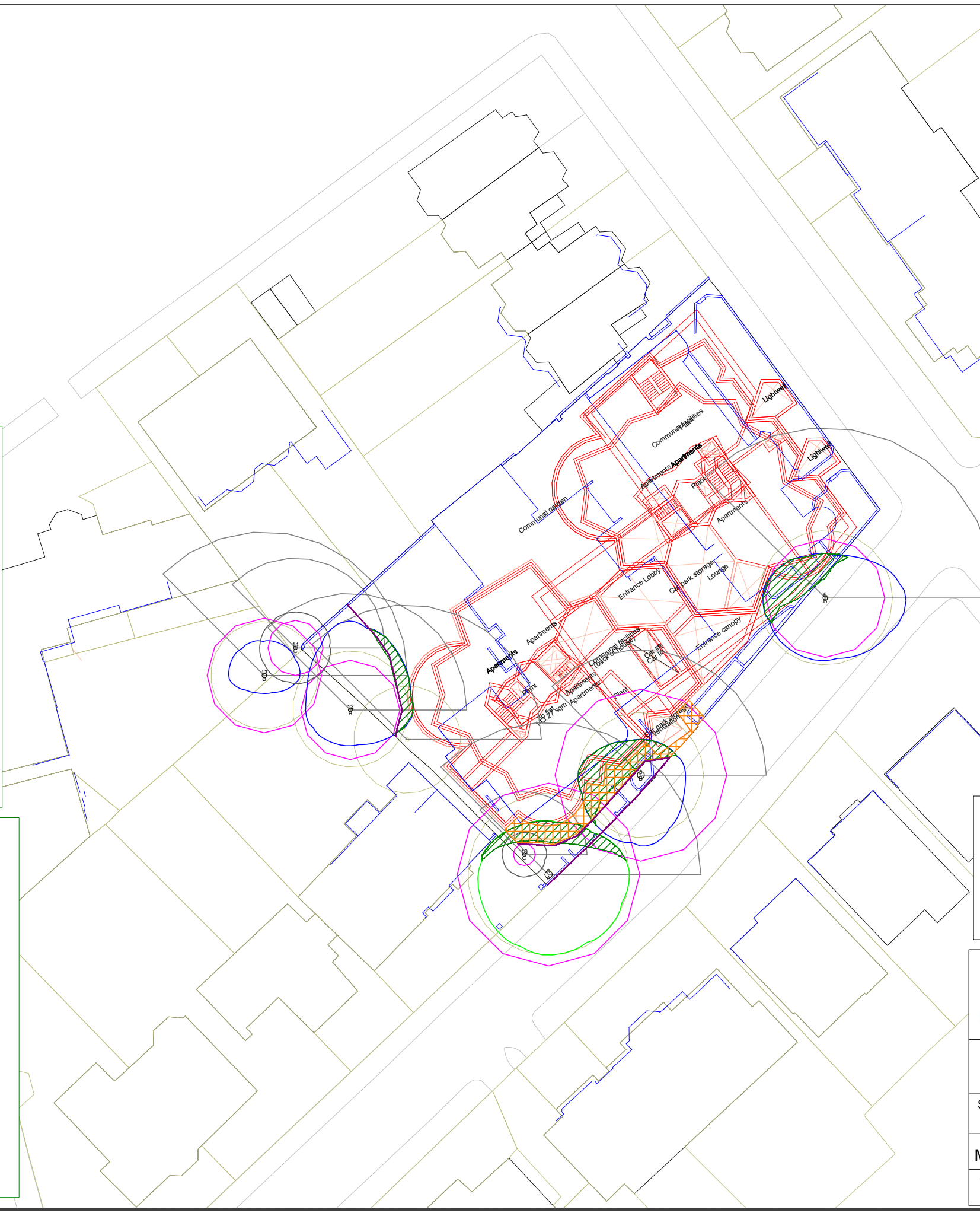
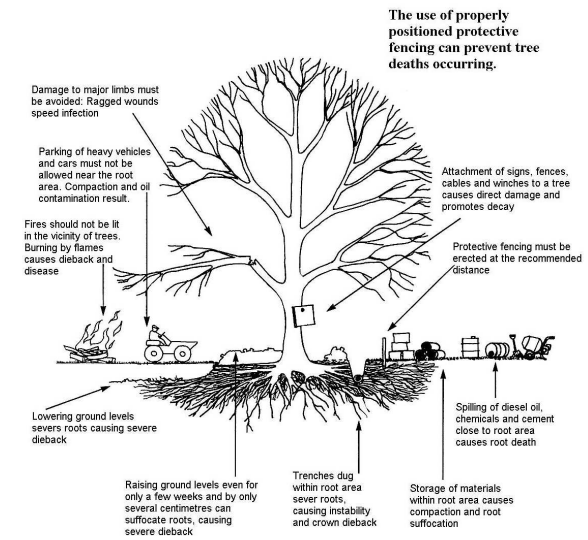
Standard Tree Protection Fencing



Protective Fencing and Pedestrian Access within RPA.



Actions to Avoid  
Common causes of Tree Death




**Key**

- Approximate area of crown reduction
- Ground Protection Pedestrian Access.
- Protective Fencing During Construction

 Unit 60, Aston Down,  
Stroud, Gloucestershire  
GL6 8GA  
Tel 01285 760466 Fax 01285 760983  
sales@treemaintenance.co.uk  
www.treemaintenance.co.uk

**Tree Protection Plan (Construction)**  
**79 Fitzjohns Avenue, Hampstead, London**

SCALE : 1 : 500	DATE : 16/12/2014	
MAP FILENAME :12090/47950 (B)		
This Plan must be read and reproduced in colour.		

**APPENDIX 3**  
**SIGNAGE FOR TREE PROTECTIVE FENCING.**



**PROTECTIVE FENCING. THIS  
FENCING MUST BE  
MAINTAINED IN ACCORDANCE  
WITH THE APPROVED PLANS  
AND DRAWINGS FOR THIS  
DEVELOPMENT**



**TREE PROTECTION AREA  
KEEP OUT**

**(TOWN AND COUNTRY PLANNING ACT 1990)  
TREES ENCLOSED BY THIS PROTECTIVE FENCING ARE  
PROTECTED BY PLANNING CONDITIONS AND/OR ARE  
SUBJECT OF A TREE PRESERVATION ORDER.  
CONTRAVENTION OF A TREE PRESERVATION ORDER MAY  
LEAD TO CRIMINAL PROSECUTION.**

**ANY ALTERATION TO THE FENCING OR INCURSION INTO  
MUST BE WITH THE WRITTEN PERMISSION OF LONDON  
BOROUGH OF CAMDEN 020 7974 4444**