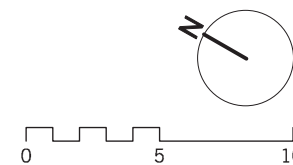
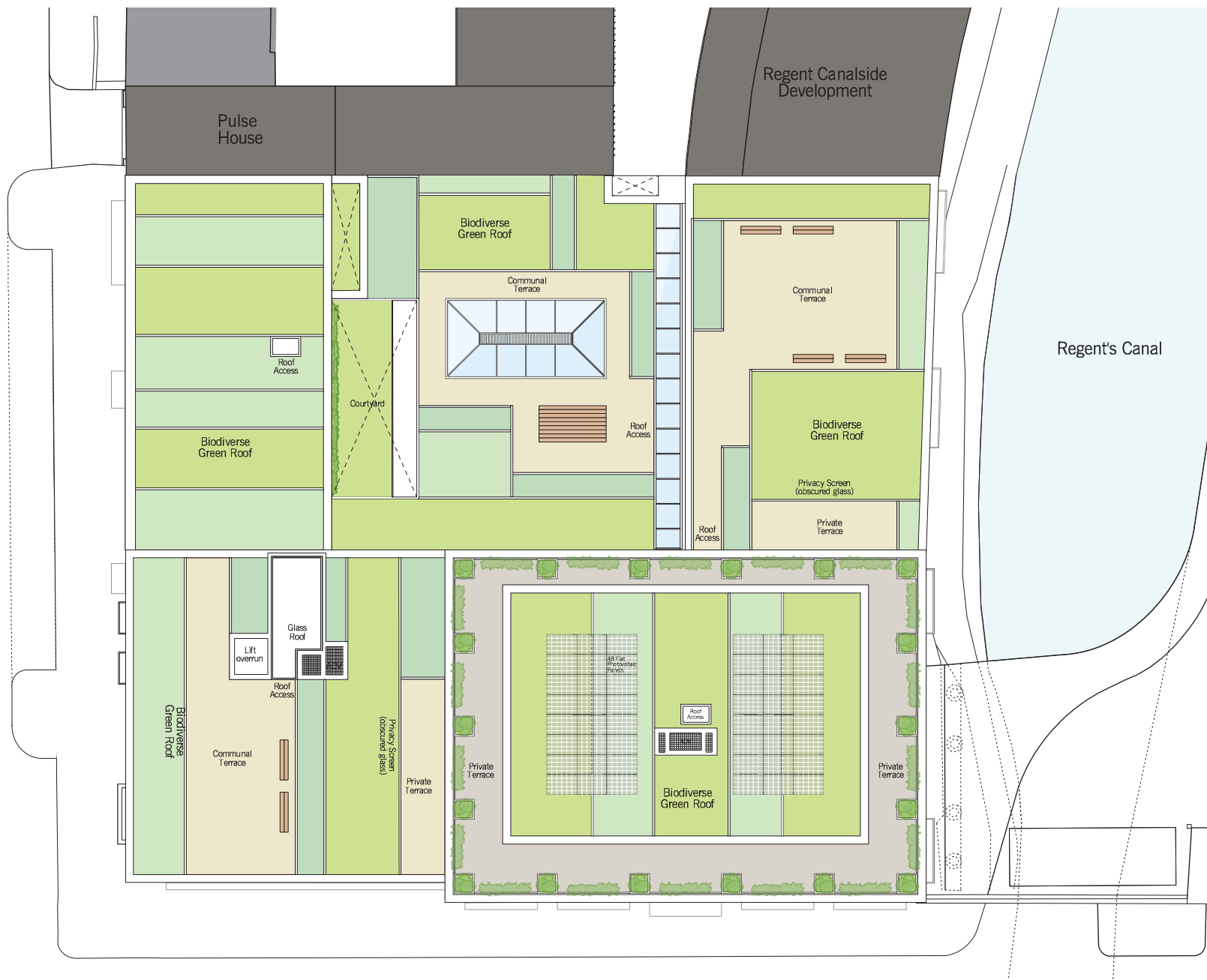


BONNY STREET

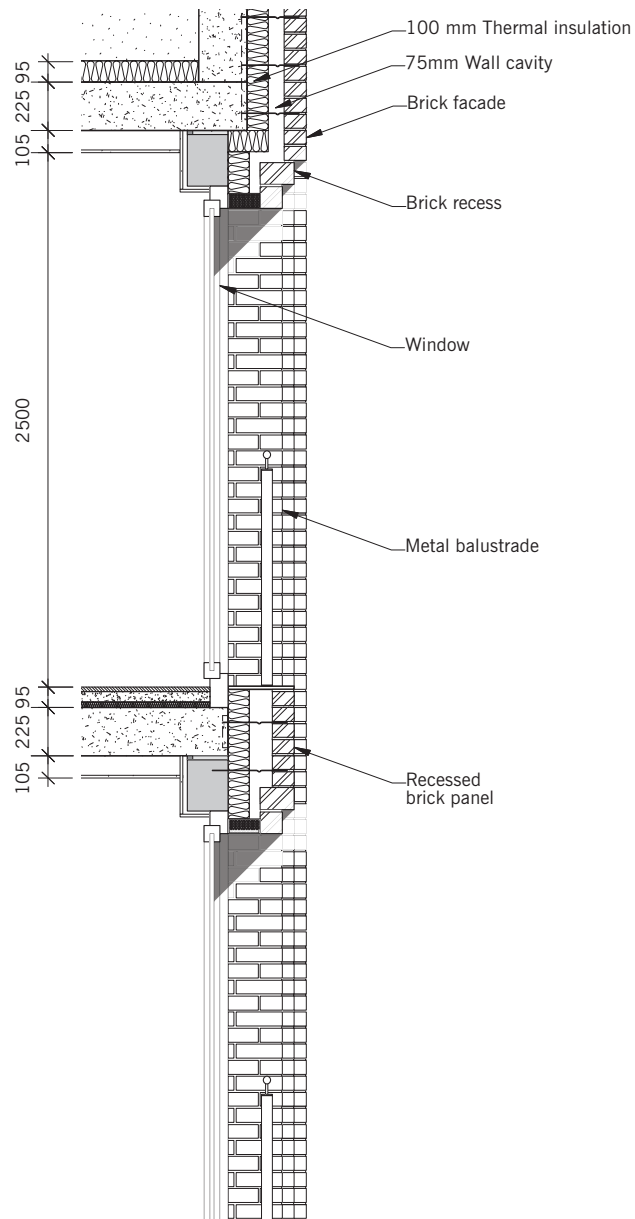


Proposed Roof Plan

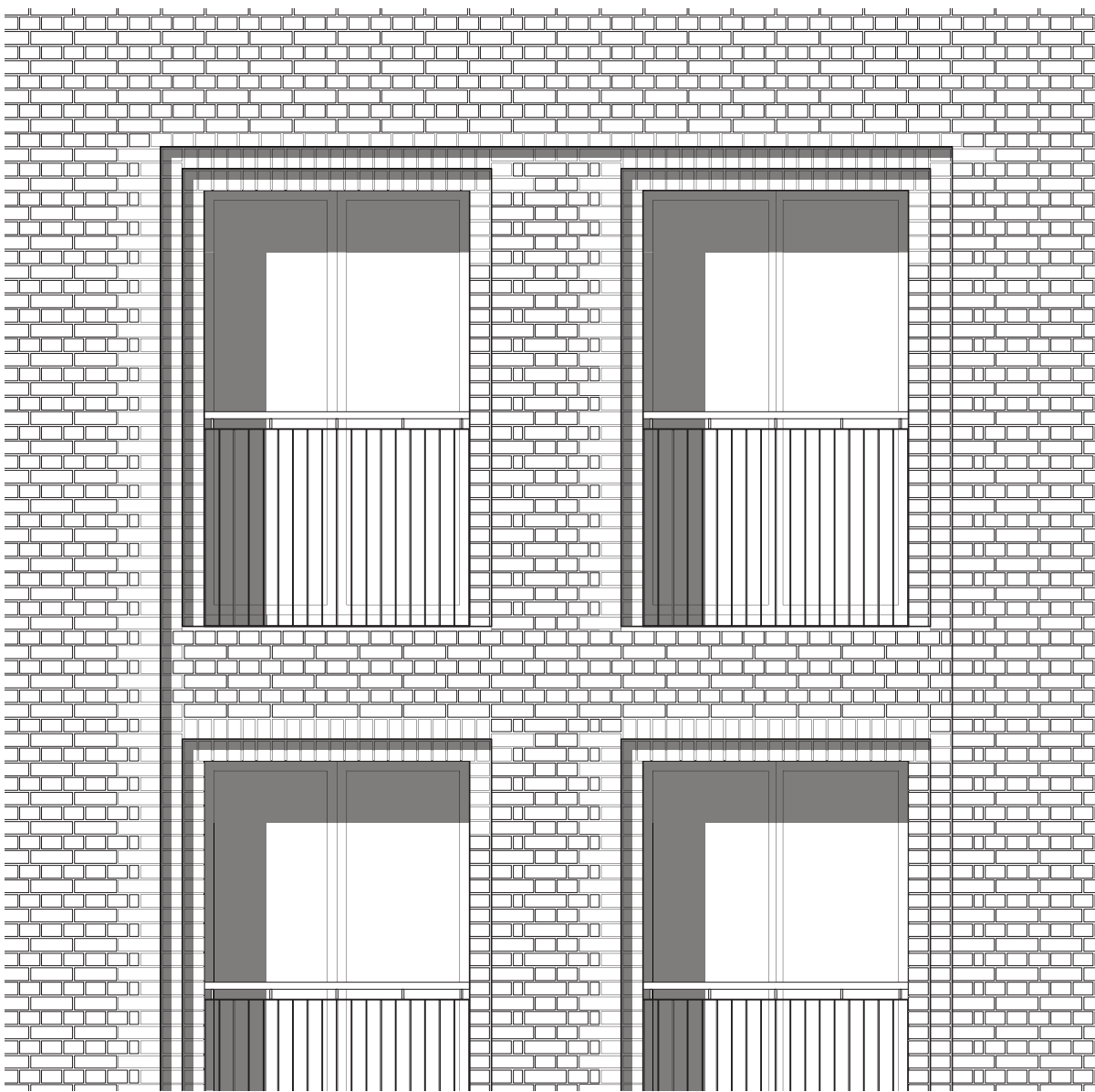
Appearance: Facade Details & Materials

This section illustrates the craftsmanship, building techniques, durability of the proposed materials and how they are used, on each distinct block

Block A - Brick Facade Detail

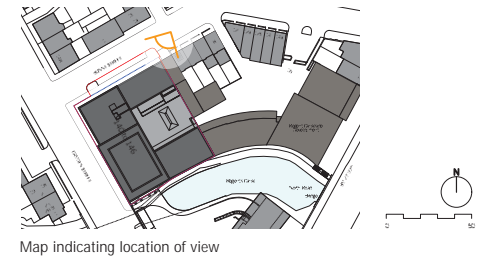


1 Brick Facade - Window Detail
Section 1:25



2 Brick Facade - Window Detail
Elevation 1:25

Block A - Reference Brick Facade



View of proposed building in Bonny Street looking west



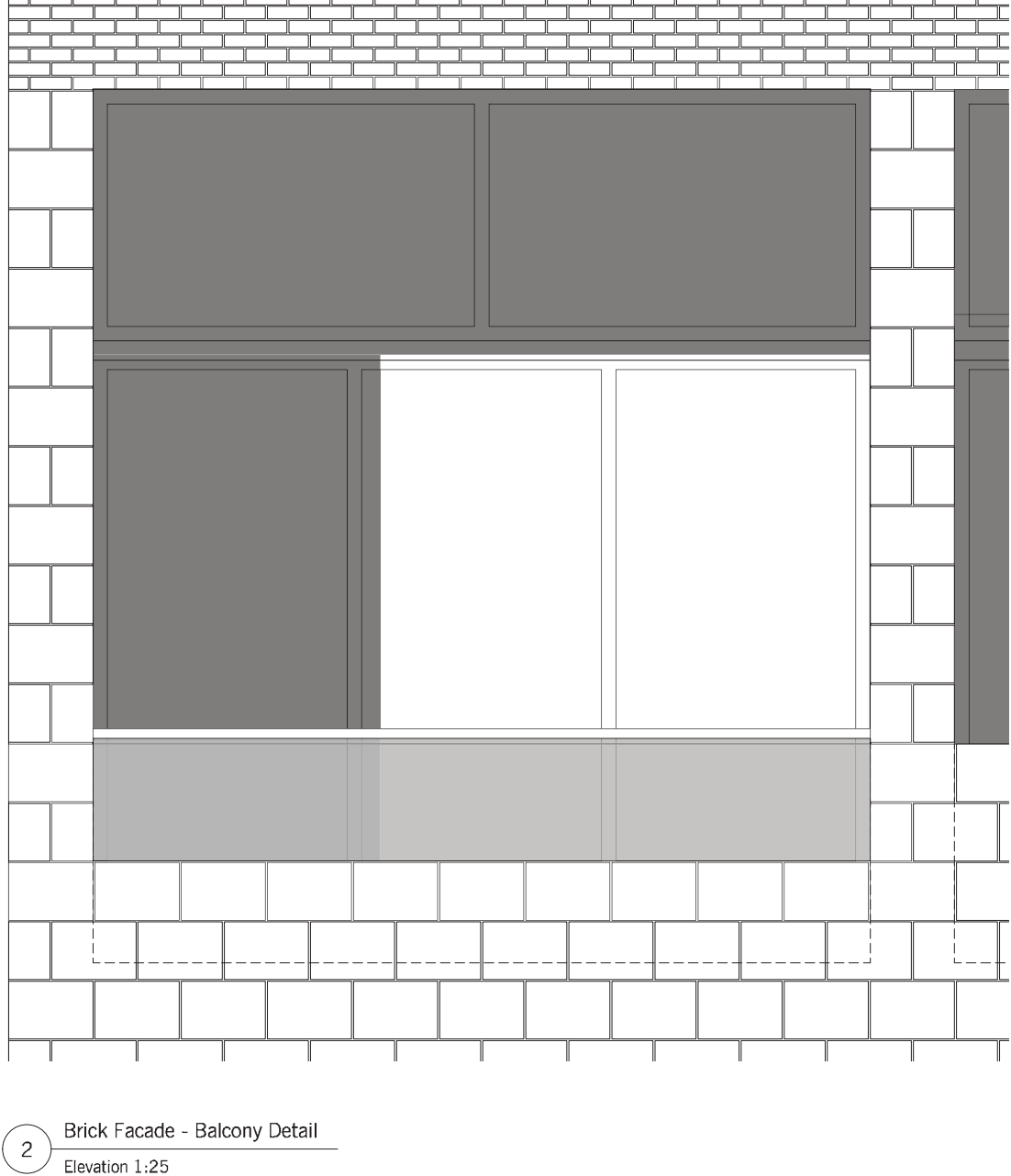
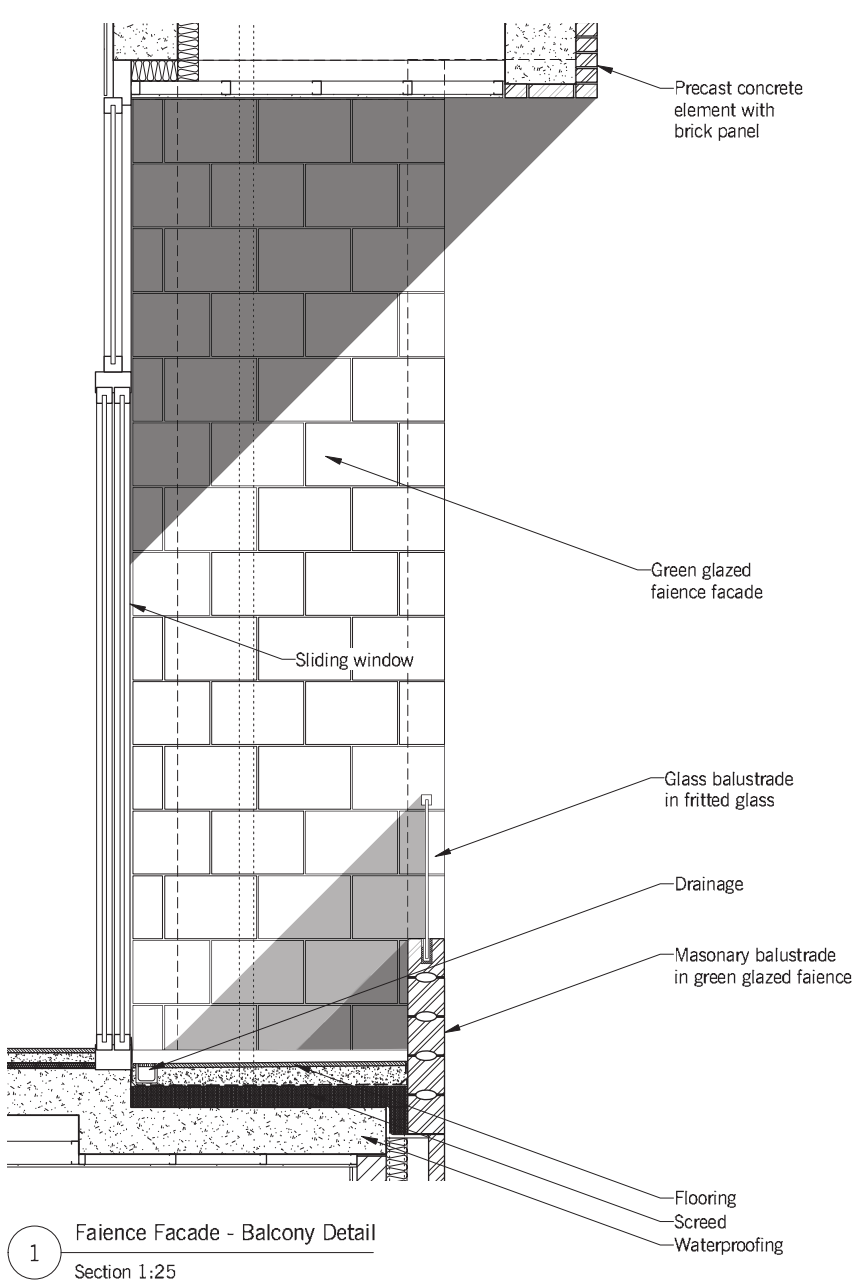
Building example from Hoskins Bricks Highbury.



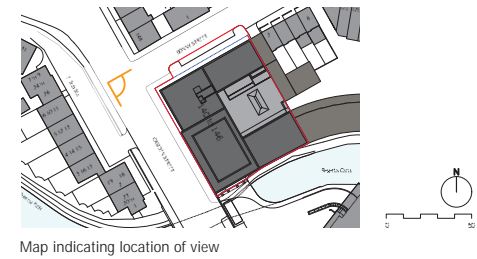
Sample panel of brickwork showing material variation

The material selected for Block A is a machine made clay stock brick with a grey light texture. this brick would compliment the adjacent yellow stock brickwork of the listed building. The mortar joint would be flush, in a grey mortar to match the brickwork.

Block B - Brick Facade Detail



Block B - Reference Brick Facade



View of proposed building in Bonny Street looking east



Sample panel of brickwork showing colour

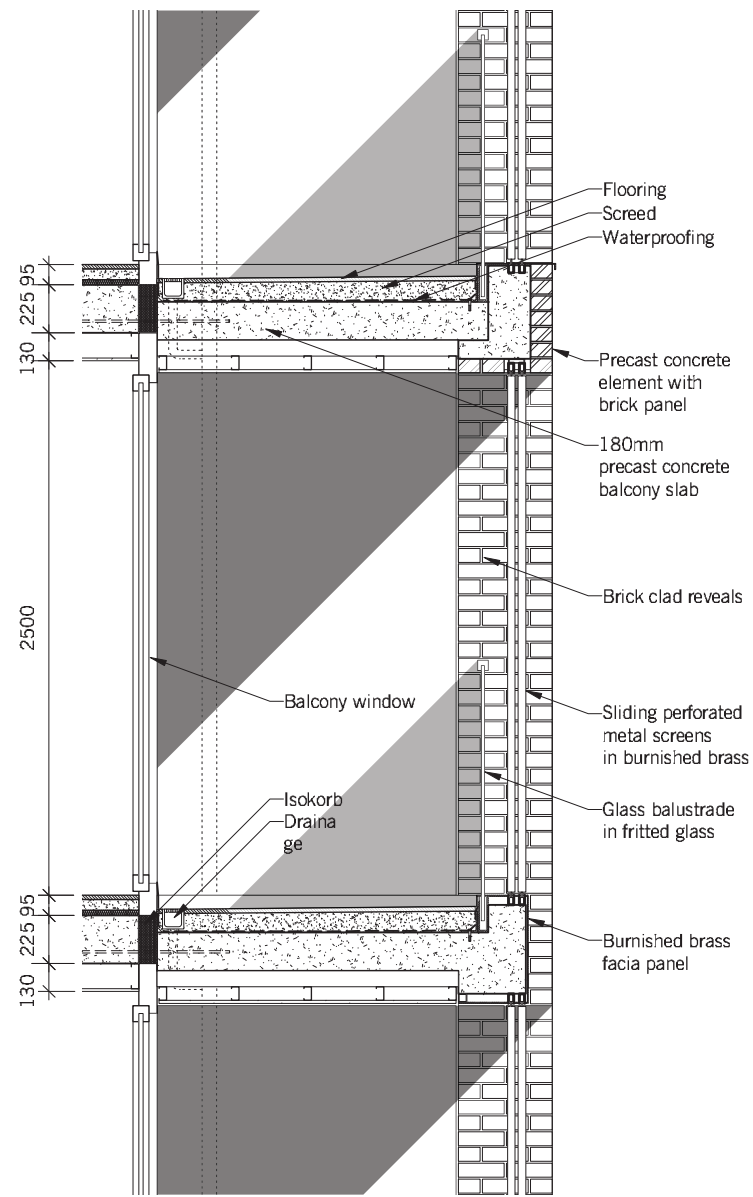


Sample panel of brickwork showing material variation

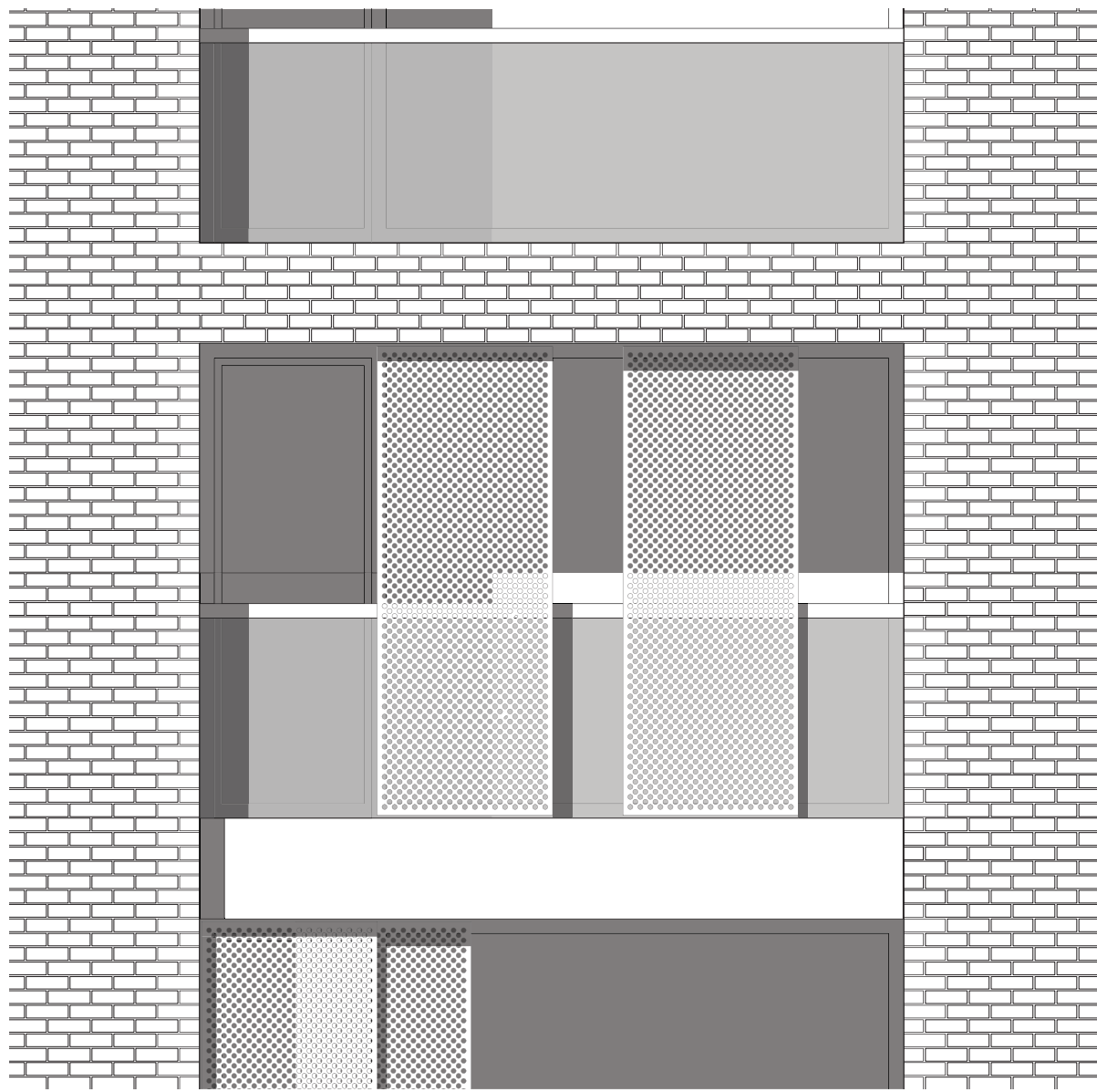
The material selected for Block B is a machine glazed dark brown clay brick. The mortar joints would be in black / brown mortar with recessed joints. The material helps to express the junction of Bonny Street and Camden Street.

These bricks are also proposed for the upper levels of block D facing the Regents Canal.

Block C - Brick Facade Detail

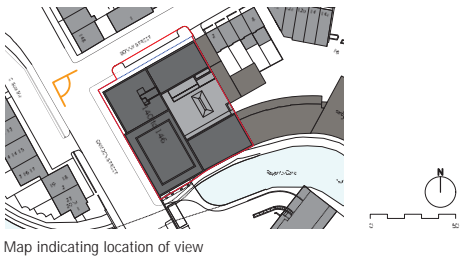


1 Balcony / Sliding Screens Detail
Section 1:25



2 Balcony / Sliding Screens Detail
Elevation 1:25

Block C - Reference Brick Facade



View of proposed building Block B and Block C in Camden Street



The material selected for Block C is a machine made clay stock brick with a light variegated texture, with flush matching mortar

Sample panel of brickwork showing colour and material variation