

P1	Sliding doors amended	16/12/14	RD	RK
P0	Planning Submission	29/09/14	JT	RD
Rev	Description	Date	By	Chk
key plan				

28 - 42 Banner Street  
London EC1Y 8QE  
Tel 020 7608 9600  
Fax 020 7608 9601  
www.ericparryarchitects.co.uk

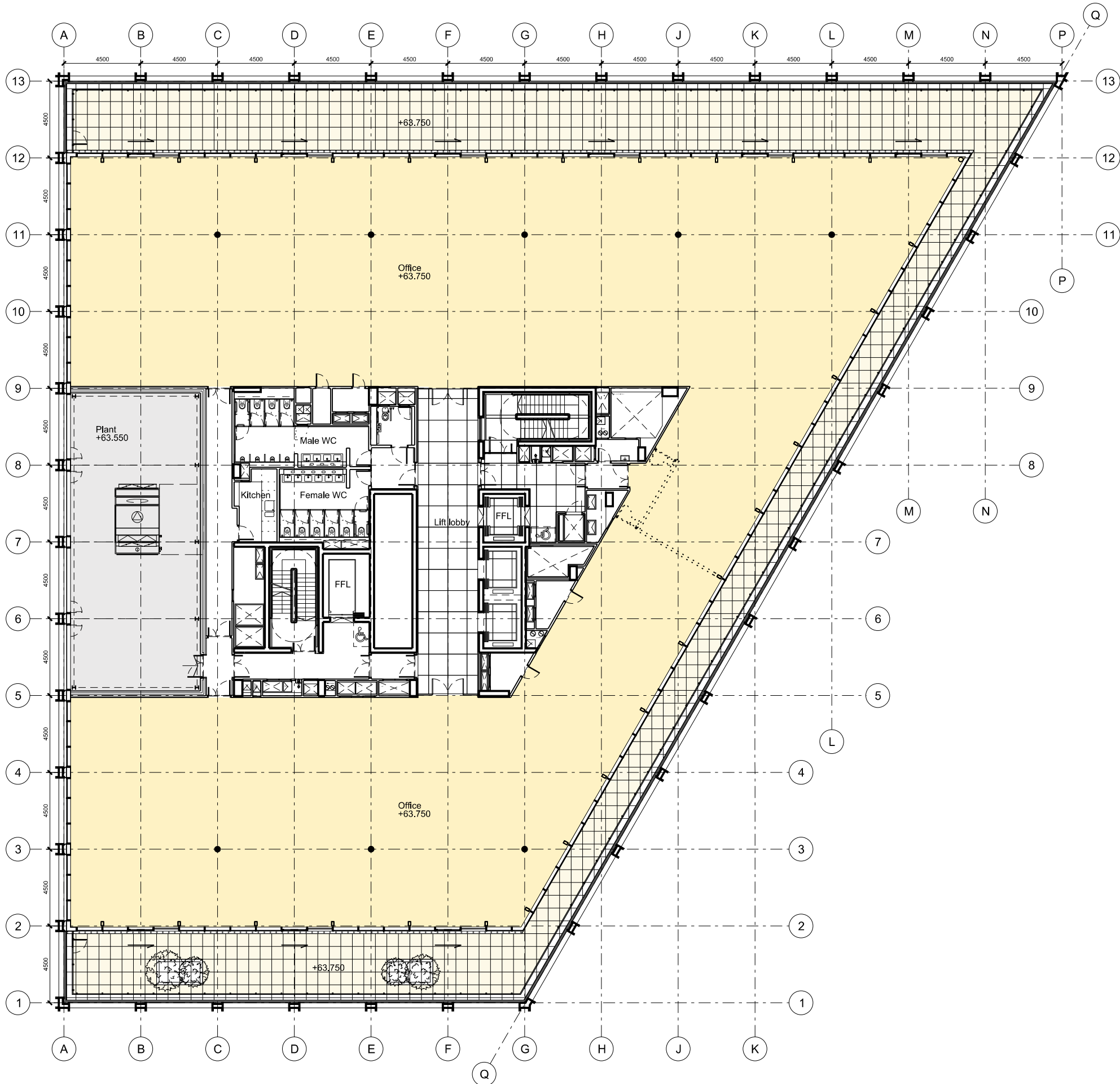
**Eric Parry Architects**

client  
King's Cross Central General Partnership

project  
Building B5

drawing title Proposed GA First Floor Plan	scale 1 : 250 @ A3
drawing no EPA KXC 05 116	revision P1



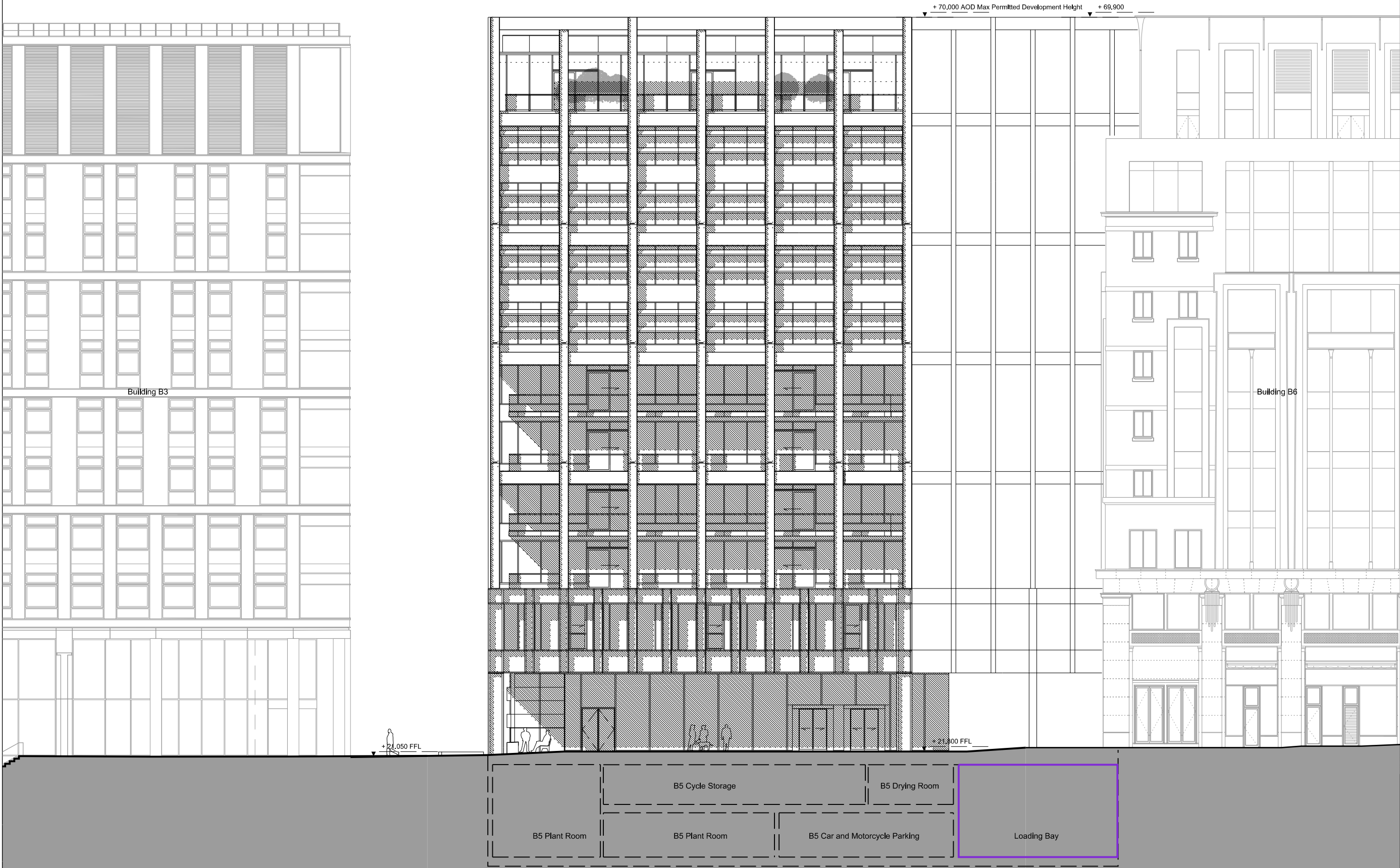


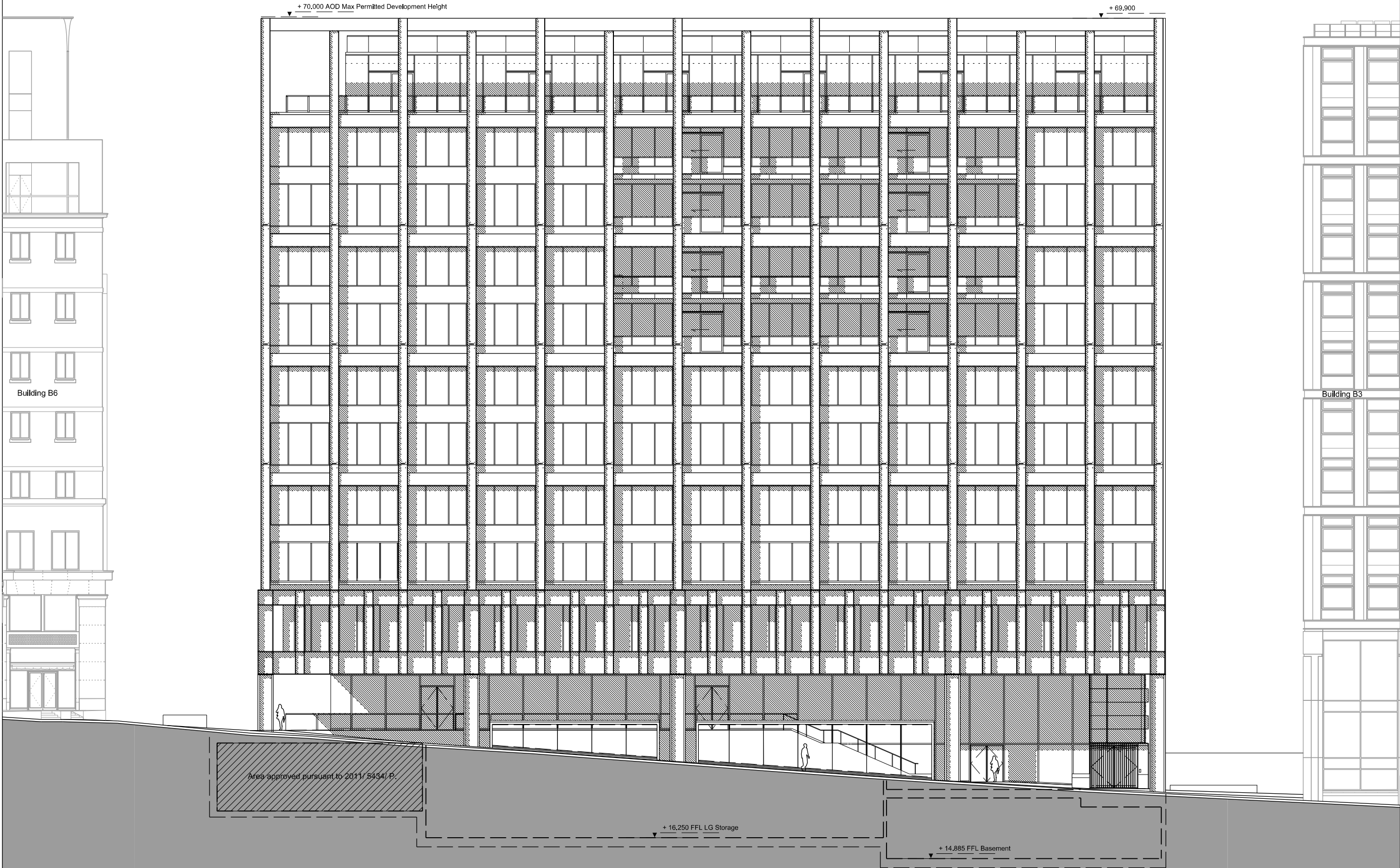
P1	Sliding doors amended	16/12/14	RD	RK
P0	Planning Submission	29/09/14	JT	RD
Rev	Description	Date	By	Chk
key plan				

28 - 42 Banner Street  
London EC1Y 8QE  
Tel 020 7608 9500  
Fax 020 7608 9501  
www.ericparryarchitects.co.uk

**Eric Parry Architects**

client	King's Cross Central General Partnership
project	Building B5
drawing title	Proposed GA Tenth Floor Plan
scale	1 : 250 @ A3
drawing no	EPA KXC 05 125
revision	P1





P1	Sliding doors amended	16/12/14	RD	RK
P0	Planning Submission	29/09/14	JT	RD
Rev	Description	Date	By	Chk
key plan				

28 - 42 Banner Street  
London EC1Y 8QE  
Tel 020 7608 9600  
Fax 020 7608 9601  
www.ericparryarchitects.co.uk

Eric Parry Architects

client  
King's Cross Central General Partnership

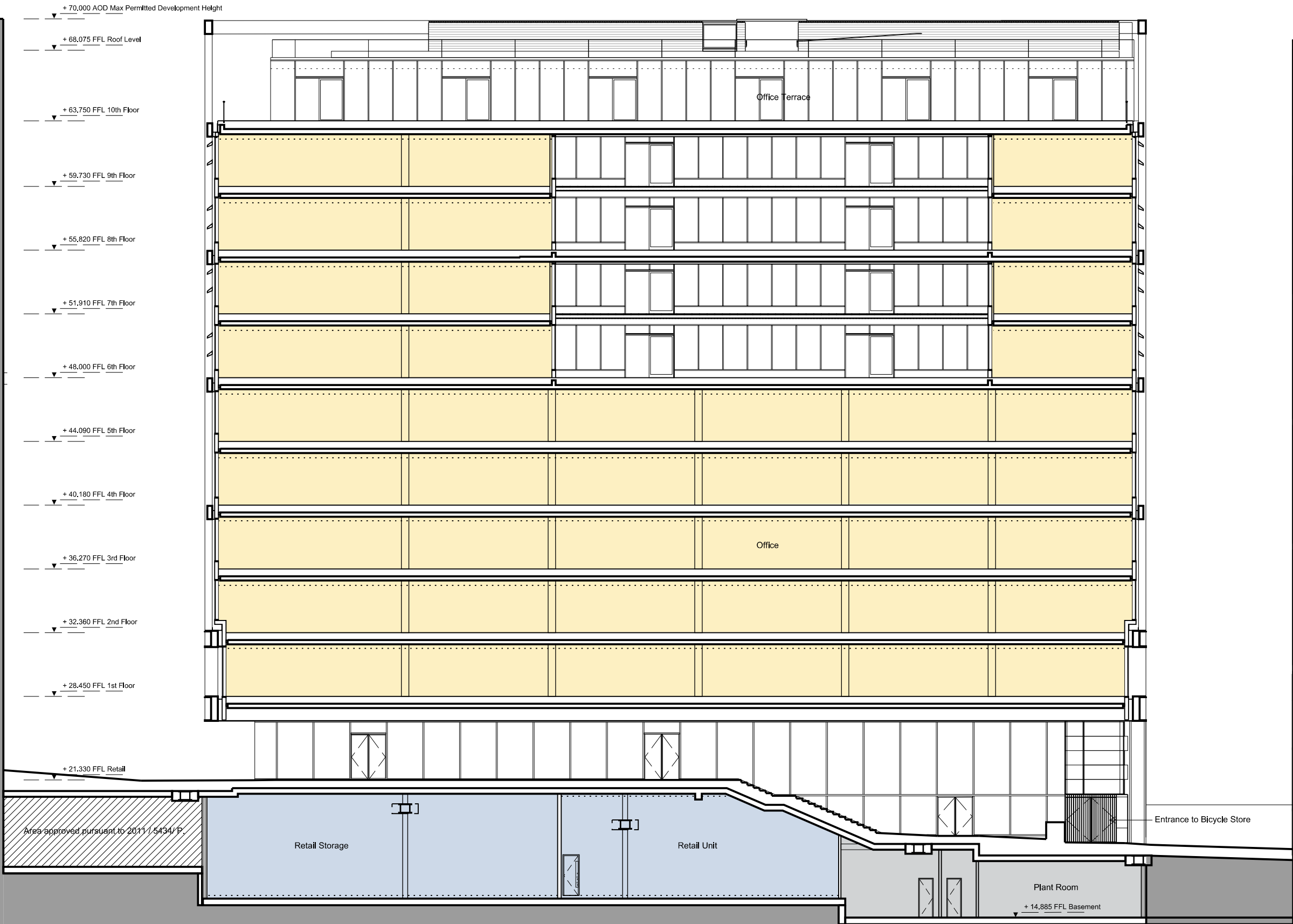
project  
Building B5

drawing title  
Proposed GA  
North Elevation

scale  
1 : 250  
@ A3

drawing no  
EPA KXC 05 202

revision  
P1

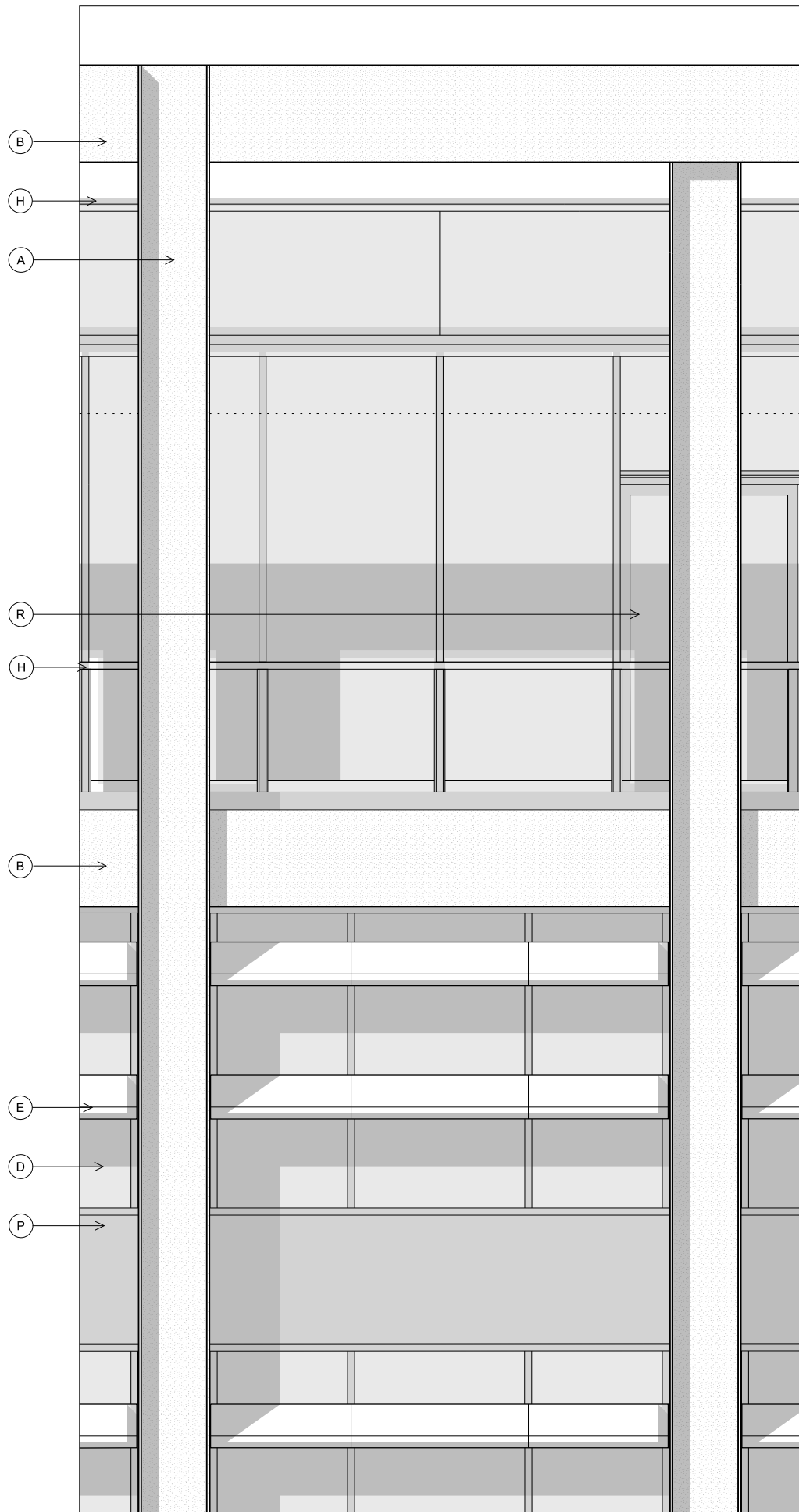


P1	Sliding doors amended	16/12/14	RD	RK
P0	Planning Submission	29/09/14	JT	RD
Rev	Description	Date	By	Chk
key plan				

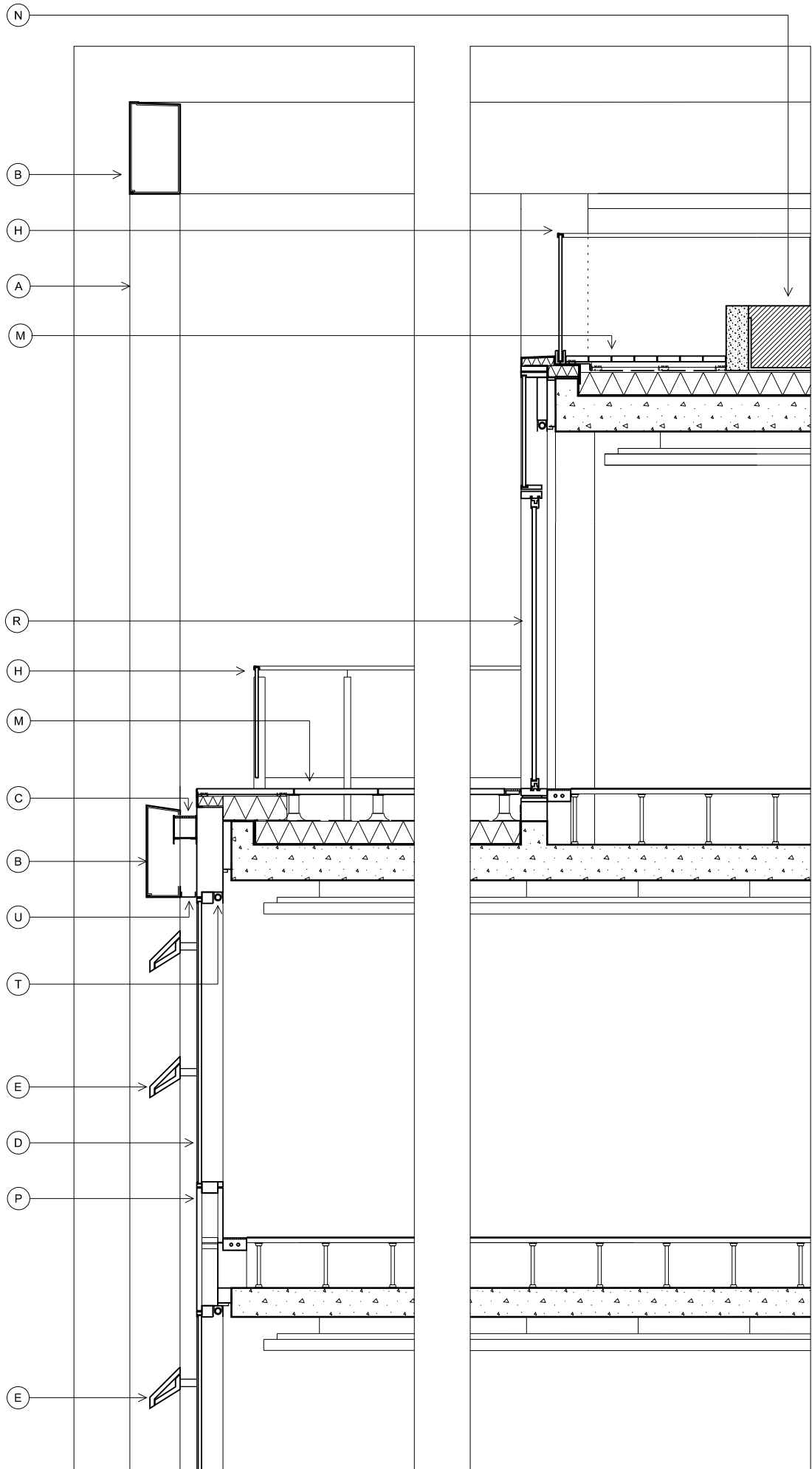
28 - 42 Banner Street  
London EC1Y 8QE  
Tel : 020 7608 9500  
Fax : 020 7608 9501  
www.ericparryarchitects.co.uk

Eric Parry Architects	
client	King's Cross Central General Partnership
project	Building B5
drawing title	Proposed GA Section E-E
scale	1 : 250 @ A3
drawing no	EPA KXC 05 302
revision	P1





01 Partial Elevation  
05 400 South Elevation 1 : 50



02 Partial Section  
05 400 1 : 50

THIS DRAWING IS COPYRIGHT.  
No drawing shall be reproduced in any form without prior  
written permission of Eric Parry Architects.

- KEY
- A Weathered steel structural external columns. Countersunk bolt connections to internal splice plates. Angled weathering plates to connection details and drip details incorporated to all bottom edges to manage rainwater run off.
  - B Weathered steel plate spandrel panels with back fixing to columns. Back drained to gutter as part of cladding package. Drip detail to leading edge.
  - C Concealed gutter + grating with RWP connections to rear of columns.
  - D Untilted curtain wall panels with Insulated glass units full width weather steel cladding spandrels.
  - E Extruded cast glazed terracotta brise soleil panels with aluminium / stainless steel sub-frame and fixed to curtain wall with aluminium / stainless steel brackets.
  - F Full height reception / shopfront glazing with no transoms. Curtain wall system with fabricated steel profiles. Insulating glass units and insulation backed louvre grilles above soffit venting through ceiling plenum to retail units.
  - G Glazed automatic bi-parting entrance doors.
  - H Structural glazed balustrades with vitreous enamel handrails to terraces and balconies.
  - I Vitreous enamel
  - J White glazed terracotta fascia to suspended balconies.
  - K White glazed terracotta soffit cladding to underside of terraces and balconies.
  - L Large module 1.25m square terrazzo paving - colour tbc.
  - M Inverted roof terrace Hot melt self healing polymer modified bitumen roof membrane nom. 200mm Roof insulation including drainage layer. Terrazzo paving on spacers.
  - N Intensive green roof garden Hot melt self healing polymer modified bitumen roof membrane.
  - P Full width single piece aluminium spandrel panel without joints inside & outside.
  - Q Continuous ppc louvre grille
  - R Weathered steel plate verandah
  - T Integrated blind box + roller blind as included.
  - U PPC Closer panels to soffit + side of columns.
  - V Polished black granite soffit to ground floor colonnade.
  - W Hit + miss glazing
  - X Terrazzo precast panels
  - Y Board mark shuttered concrete
  - Z Public Realm Lighting

P1	Sliding Doors amended	16/12/14	RD	RK
P0	Planning Submission.	29/09/14	JT	RD
Rev	Description	Date	By	Chk
key plan				

28 - 42 Banner Street  
London EC1Y 8QE  
Tel 020 7608 9600  
Fax 020 7608 9601  
www.ericparryarchitects.co.uk

**Eric Parry Architects**

client  
King's Cross Central General Partnership

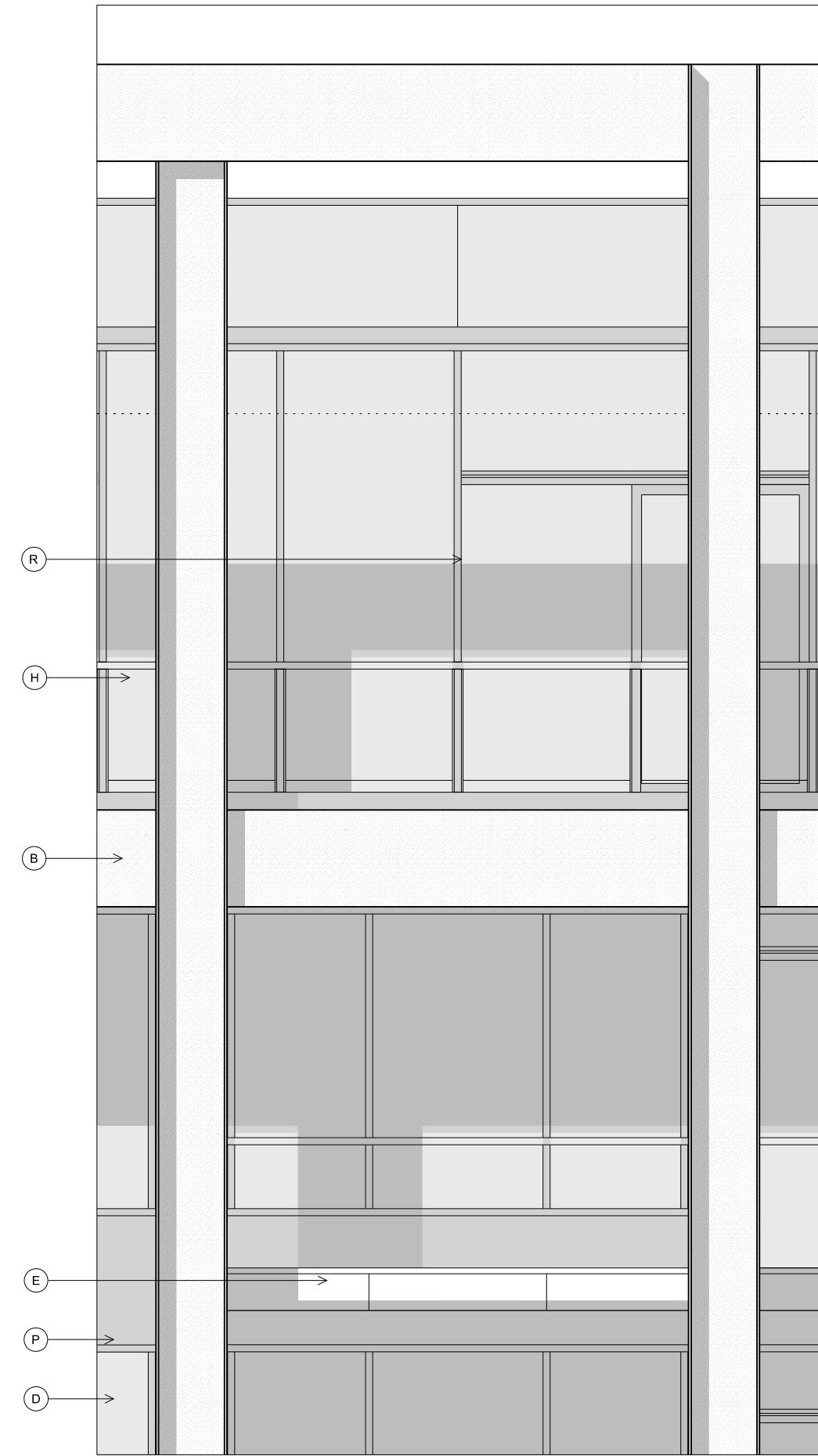
project  
Building B5

drawing title  
Proposed Detail Elevation & Section  
South Elevation Level 10

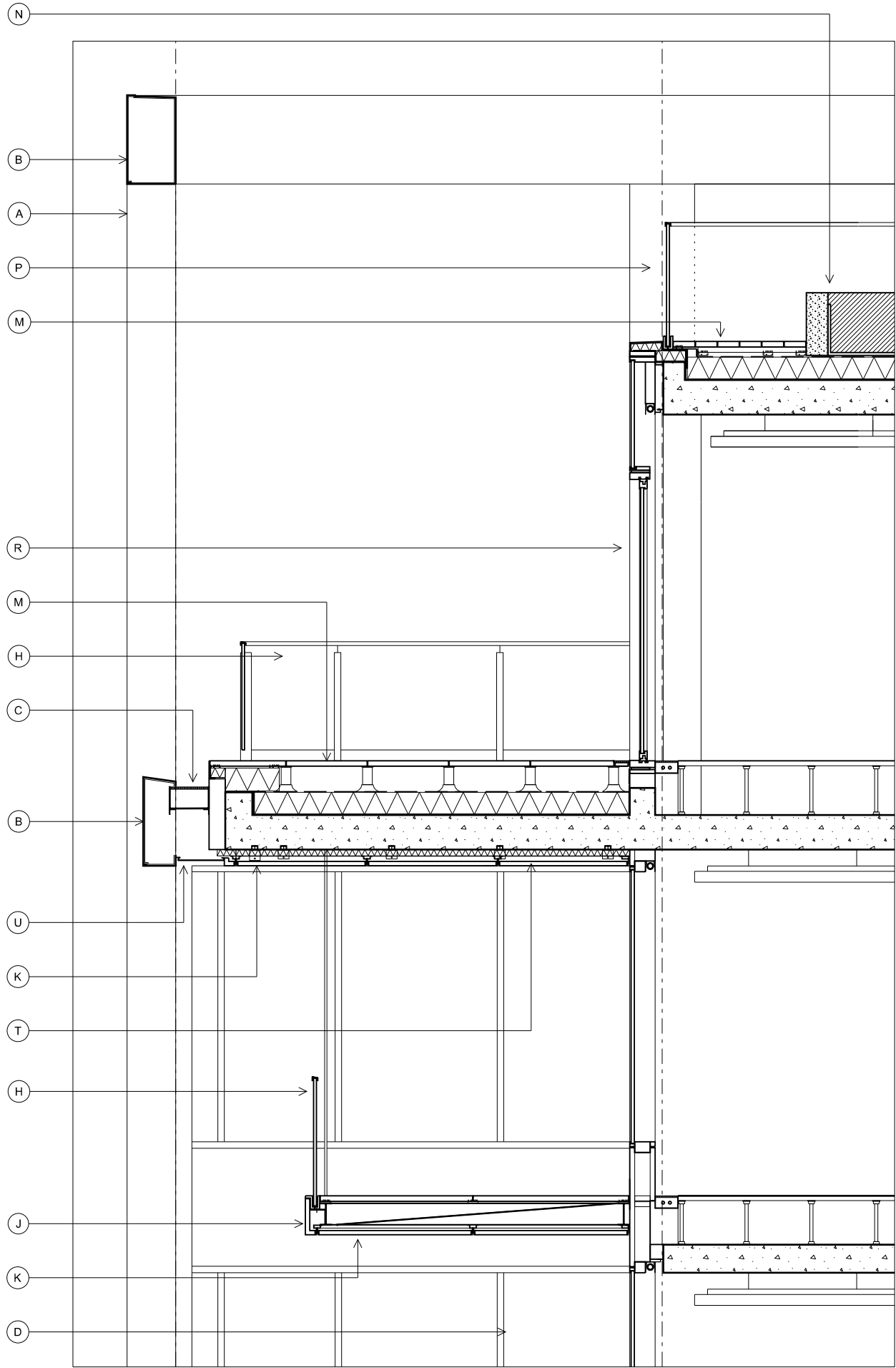
scale  
1 : 50  
@ A3

drawing no  
EPA KXC 05 400

revision  
P1



01 Partial Elevation  
05 405 North Elevation 1: 50



02 Partial Section  
05 405 1: 50

THIS DRAWING IS COPYRIGHT.  
No drawing shall be reproduced in any form without prior written permission of Eric Parry Architects.

KEY

- A Weathered steel structural external columns. Countersunk bolt connections to internal splice plates. Angled weathering plates to connection details and drip details incorporated to all bottom edges to manage rainwater run off.
- B Weathered steel plate spandrel panels with back fixing to columns. Back drained to gutter as part of cladding package. Drip detail to leading edge.
- C Concealed gutter + grating with RWP connecting to rear of columns.
- D Unlit curtain wall panels with insulated glass units full width weather steel cladding spandrels.
- E Extruded cast glazed terracotta brise soleil panels with aluminium / stainless steel sub-frame and fixed to curtain wall with aluminium / stainless steel brackets.
- F Full height reception / shopfront glazing with no transoms. Curtain wall system with fabricated steel profiles. Insulating glass units and insulation backed louvre grilles above soffit venting through ceiling plenum to retail units.
- G Glazed automatic bi-parting entrance doors.
- H Structural glazed balustrades with vitreous enamel handrails to terraces and balconies.
- I Vitreous enamel
- J White glazed terracotta fascia to suspended balconies.
- K White glazed terracotta soffit cladding to underside of terraces and balconies.
- L Large module 1.25m square terrazzo paving - colour tbc.
- M Inverted roof terrace Hot melt self healing polymer modified bitumen roof membrane nom. 200mm Roof insulation including drainage layer. Terrazzo paving on spacers.
- N Intensive green roof garden Hot melt self healing polymer modified bitumen roof membrane.
- P Full width single piece aluminium spandrel panel without joints inside & outside.
- Q Continuous ppc louvre grille
- R Weathered steel plate verandah
- S Lift and slide doors for access onto terraces and balconies.
- T Integrated blind box + roller blind as included.
- U PPC closer panels to soffit + side of columns.
- V Polished black granite soffit to ground floor colonnade.
- W Hi + miss glazing
- X Terrazzo precast panels
- Y Board mark shuttered concrete
- Z Public Realm Lighting

P1	Sliding Doors amended.	15 12 14	RD	RK
P0	Planning Submission.	29 09 14	MM	RD
Rev	Description	Date	By	Chk

key plan

28 - 42 Banner Street  
London EC1Y 8QE  
Tel 020 7608 9600  
Fax 020 7608 9601  
www.ericparryarchitects.co.uk

**Eric Parry Architects**

client  
King's Cross Central General Partnership

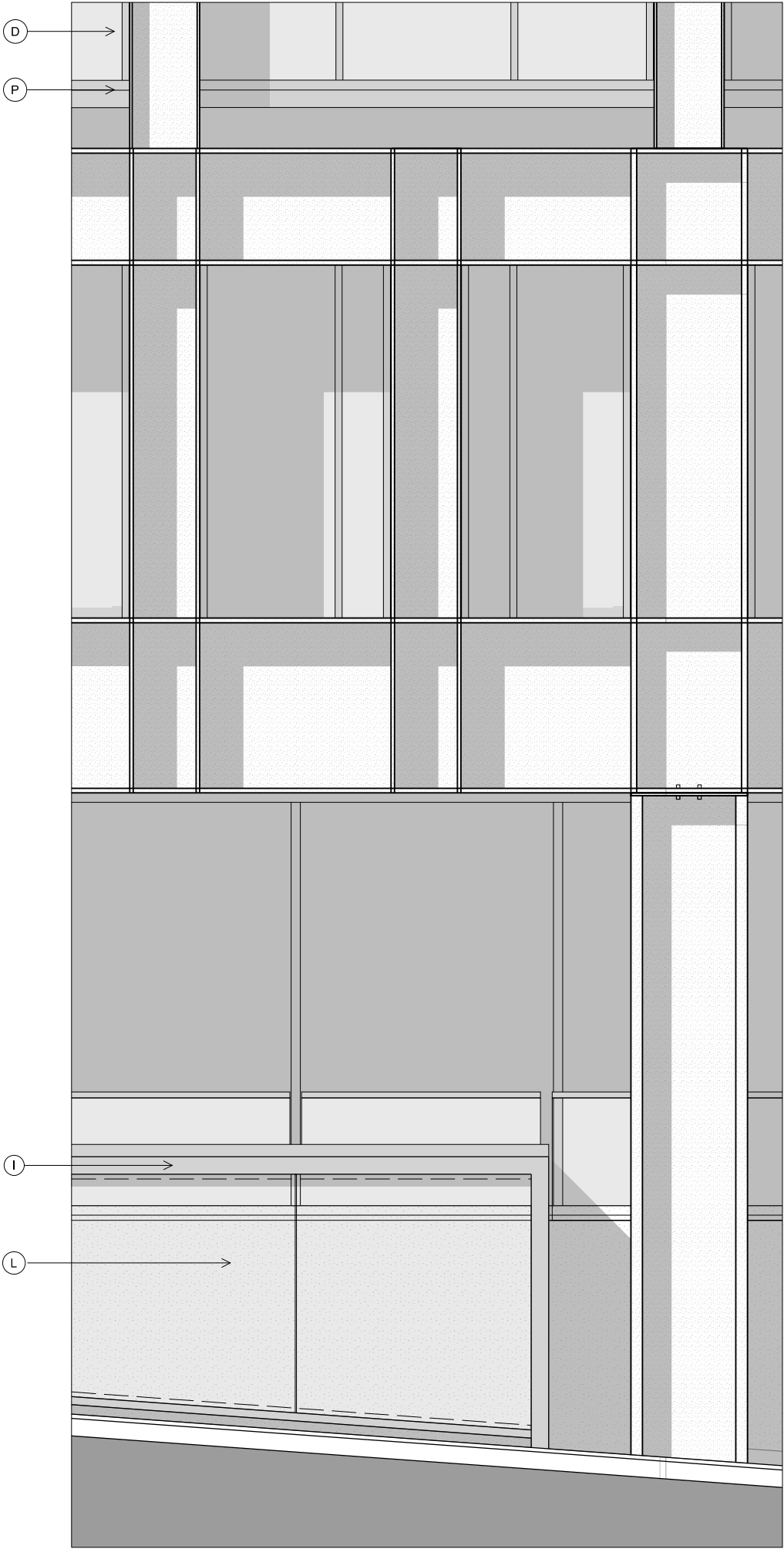
project  
Building B5

drawing title  
Proposed Detail Elevation & Section  
North Elevation Level 10

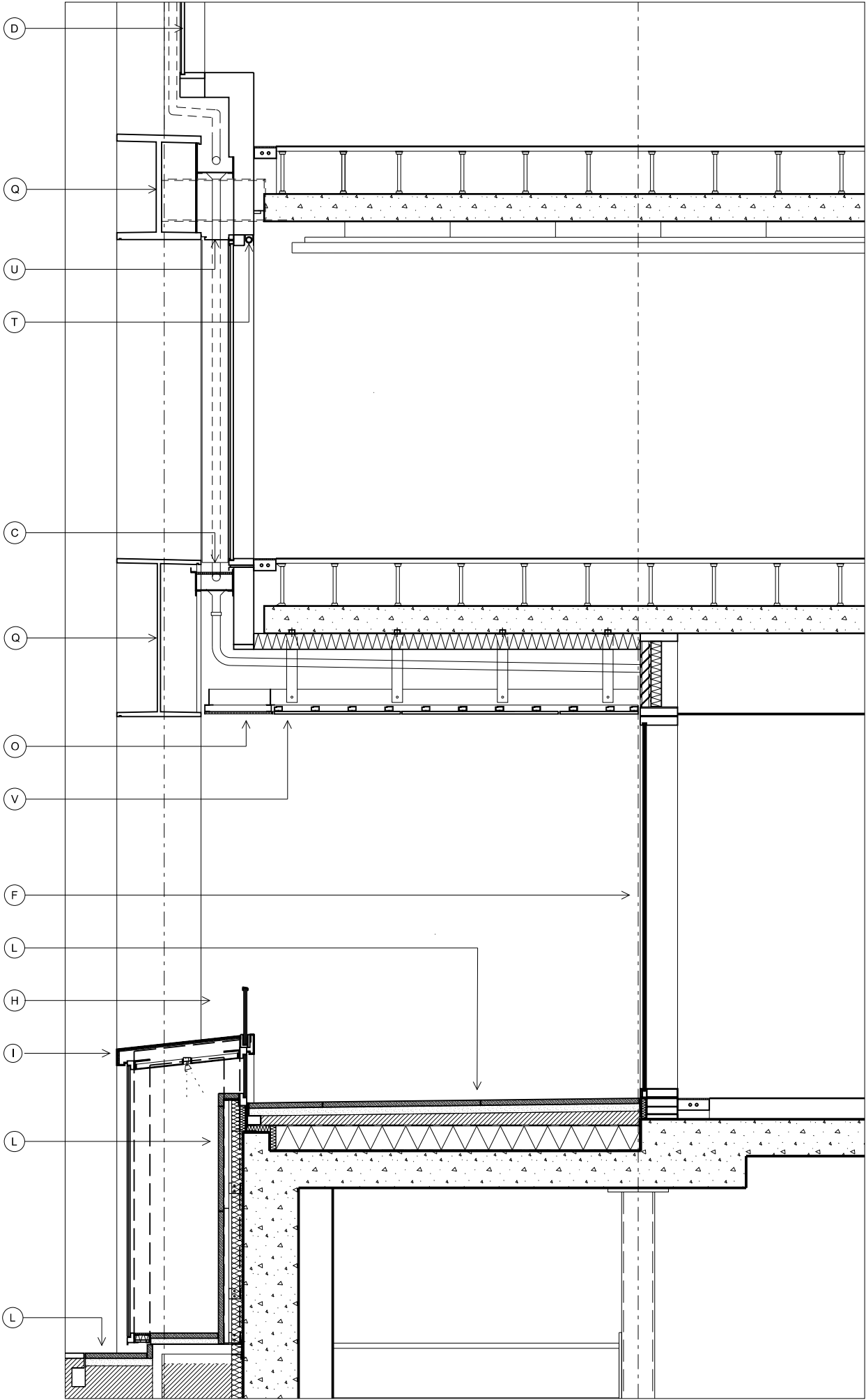
scale  
1: 50  
@ A3

drawing no  
EPA KXC 05 405

revision  
P1



01 Partial Elevation  
05 406 North Elevation 1: 50



02 Partial Section  
05 406 1: 50

THIS DRAWING IS COPYRIGHT.  
No drawing shall be reproduced in any form without prior written permission of Eric Parry Architects.

KEY

- A Weathered steel structural external columns. Countersunk bolt connections to internal splice plates. Angled weathering plates to connection details and drip details incorporated to all bottom edges to manage rainwater run off.
- B Weathered steel plate spandrel panels with back fixing to columns. Back drained to gutter as part of cladding package. Drip detail to leading edge.
- C Concealed gutter + grating with RWP connecting to rear of columns.
- D Utilised curtain wall panels with Insulated glass units full width weather steel cladding spandrels.
- E Extruded cast glazed terracotta brise soleil panels with aluminium / stainless steel sub-frame and fixed to curtain wall with aluminium / stainless steel brackets.
- F Full height reception / shopfront glazing with no transoms. Curtain wall system with fabricated steel profiles. Insulating glass units and insulation backed louvre grilles above soffit venting through ceiling plenum to retail units.
- G Glazed automatic bi-parting entrance doors.
- H Structural glazed balustrades with vitreous enamel handrails to terraces and balconies.
- I Vitreous enamel
- J White glazed terracotta fascia to suspended balconies.
- K White glazed terracotta soffit cladding to underside of terraces and balconies.
- L Large module 1.25m square terrazzo paving - colour tbc.
- M Inverted roof terrace Hot melt self healing polymer modified bitumen roof membrane nom. 200mm Roof insulation including drainage layer. Terrazzo paving on spacers.
- N Intensive green roof garden Hot melt self healing polymer modified bitumen roof membrane.
- P Full width single piece aluminium spandrel panel without joints inside & outside.
- O Continuous ppc louvre grille
- Q Weathered steel plate verandah
- R Lift and slide doors for access onto terraces and balconies.
- T Integrated blind box + roller blind as included.
- U PPC Closer panels to soffit + side of columns.
- V Polished black granite soffit to ground floor colonnade.
- W Hit + miss glazing
- X Terrazzo precast panels
- Y Board mark shuttered concrete
- Z Public Realm Lighting

P1	Sliding doors amended	15/12/14	RD	RK
P0	Planning Submission.	29/09/14	JT	RD
Rev	Description	Date	By	Chk

key plan

28 - 42 Banner Street  
London EC1Y 8QE  
Tel 020 7608 9900  
Fax 020 7608 9601  
www.ericparryarchitects.co.uk

**Eric Parry Architects**

client  
King's Cross Central General Partnership

project  
Building B5

drawing title Proposed Detail Elevation & Section North Elevation Ground & Level 1	scale 1 : 50 @ A3
--	-------------------------

drawing no EPA KXC 05 406	revision P1
------------------------------	----------------