

15 October 2014

Your ref: P2092
Our ref: J12045A/SB/rev1

Tyttenhanger House
Coursers Road
St Albans
AL4 0PG

Mr Isaac Hudson
Michael Alexander Consulting Engineers
Foundation House
4 Percy Road
London
N12 8BU

tel 01727 824666
fax 01727 824777
email mail@gea-ltd.co.uk
web www.gea-ltd.co.uk

Dear Isaac

Re 50 REDINGTON ROAD, LONDON NW3

We have noted the comments in the independent review of our ground movement assessment by LBH Wembley, and as they say there was clearly an error in the prediction of movements outside the northern boundary of the site.

We have reviewed the analysis and it is apparent that the software has overestimated the movements as a result of the complexity of the basement shape in that part of the site. This leads to a predicted interaction between the movements that in reality will not occur and a consequent overestimate of the movement. As the erroneous movements were not in an area where we are concerned about building damage we simply overlooked the error.

We have now revised our ground movement assessment using a simpler shape and the following movements have been estimated along the northern side of the excavation.

Phase of Works	Wall Movement (mm)	
	Vertical Settlement	Horizontal Movement
Pile Installation (secant wall)	7 to 8	11 to 12
Basement Excavation (excavation in front of high stiffness wall)	6 to 7	14 to 15
Piling phase and excavation phase - Combined Movements	12 to 13	24 to 26

Yours sincerely
GEOTECHNICAL AND ENVIRONMENTAL ASSOCIATES



Steve Branch

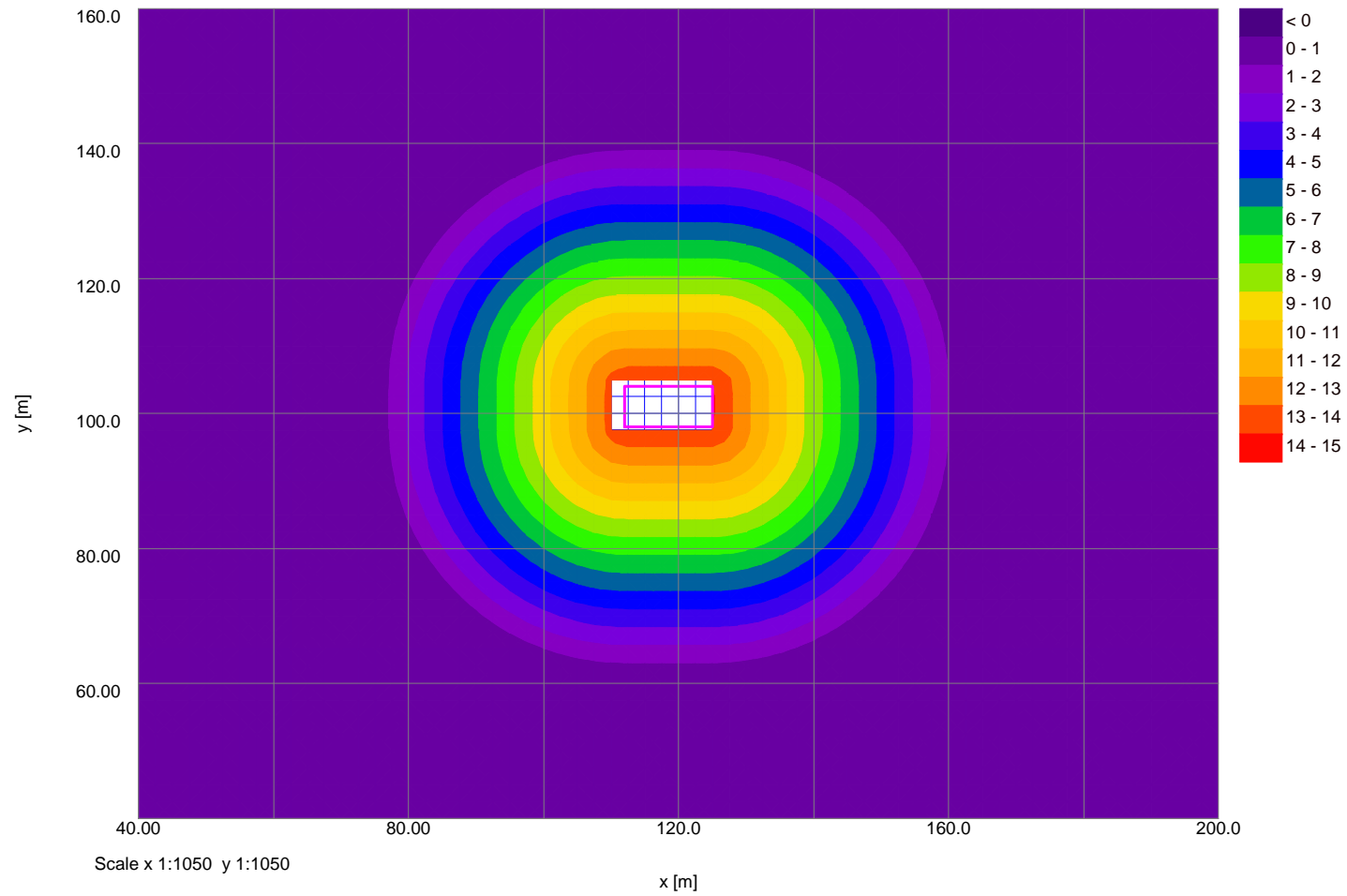


Martin Cooper

Encs

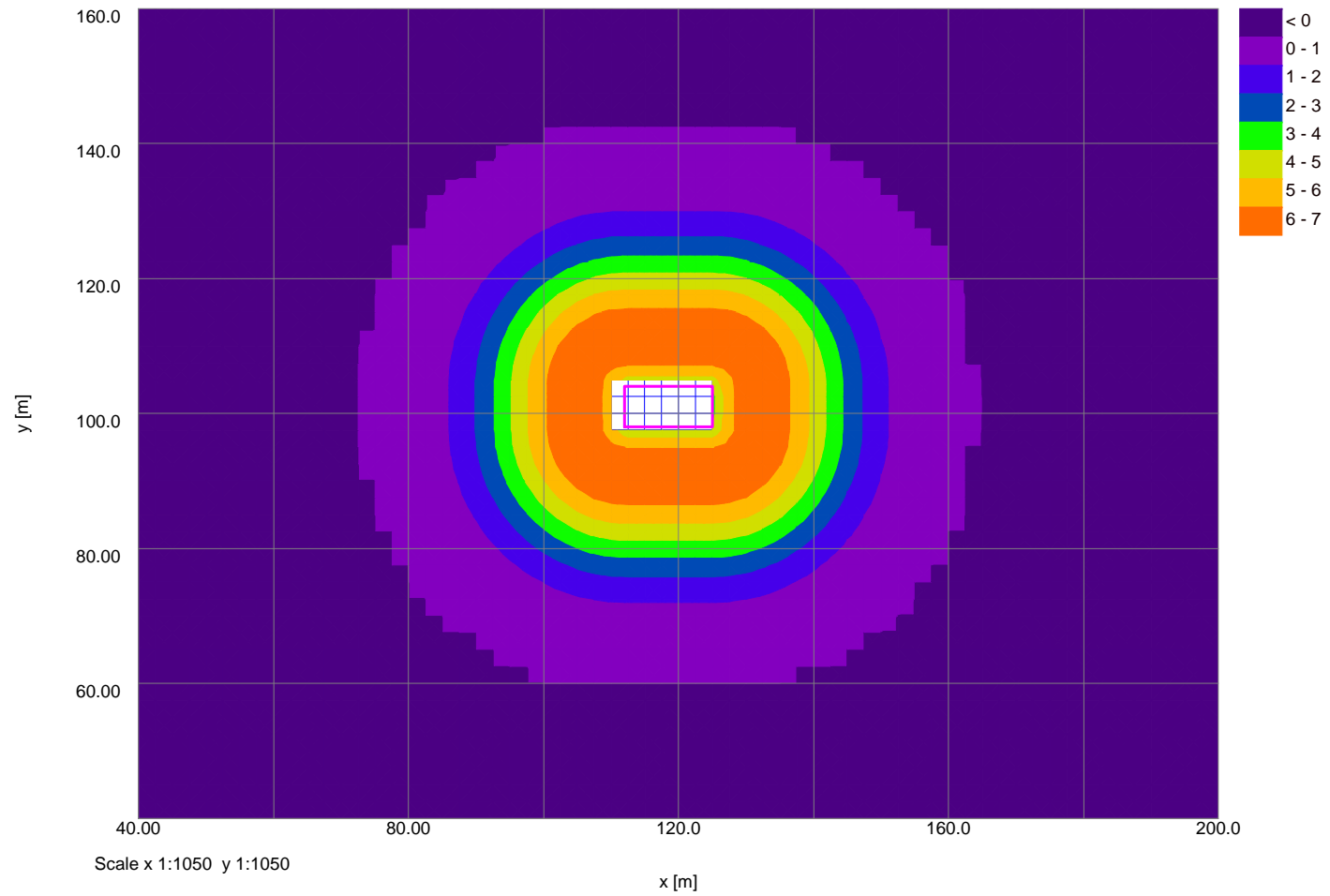
Job No.	Sheet No.	Rev.
J12045a		
Drg. Ref.		
Made by HD	Date 13-Oct-2014	Checked

Horizontal Displacement Contours: Grid 1 (level 107.400m) Interval 1mm



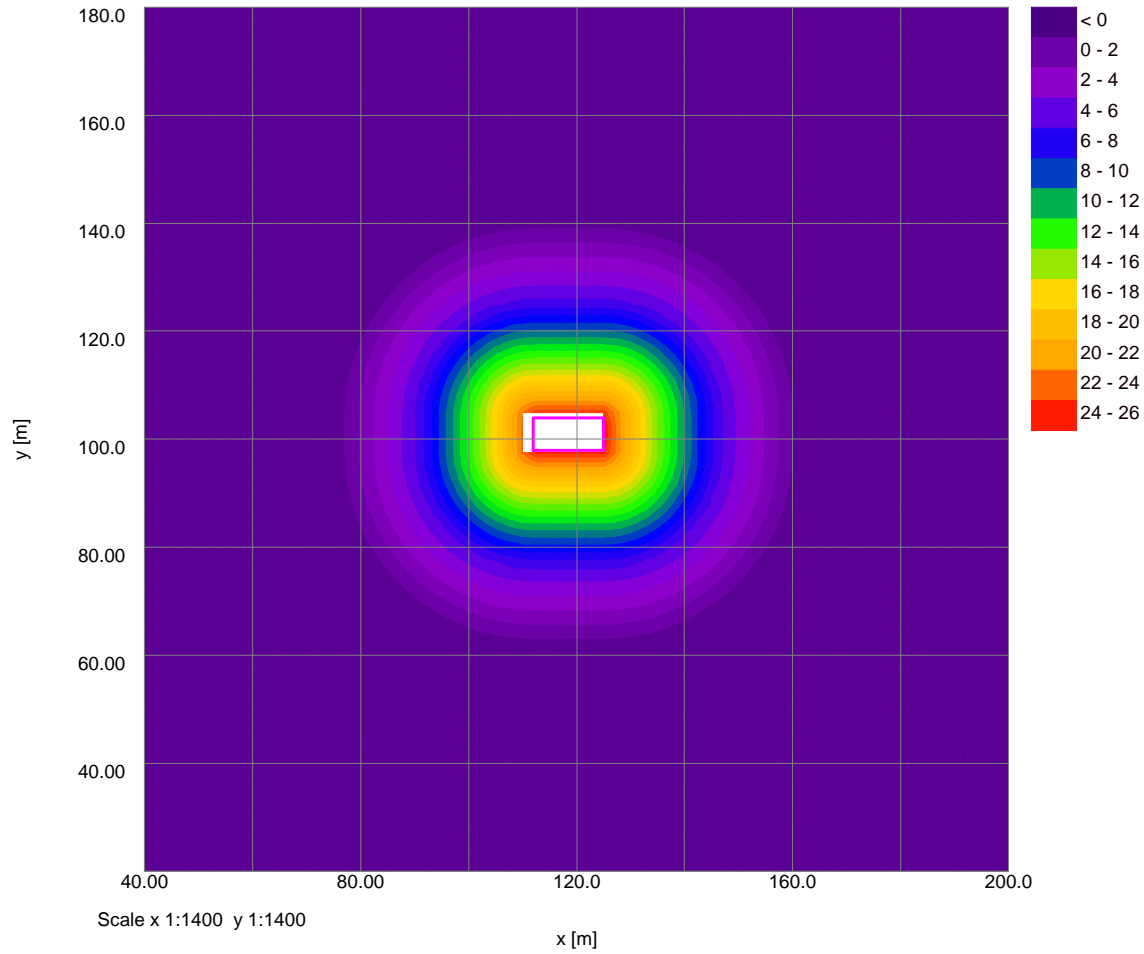
Job No.	Sheet No.	Rev.
J12045a		
Drg. Ref.		
Made by HD	Date 13-Oct-2014	Checked

Vertical Settlement Contours: Grid 1 (level 107.400m) (Interval 1mm)



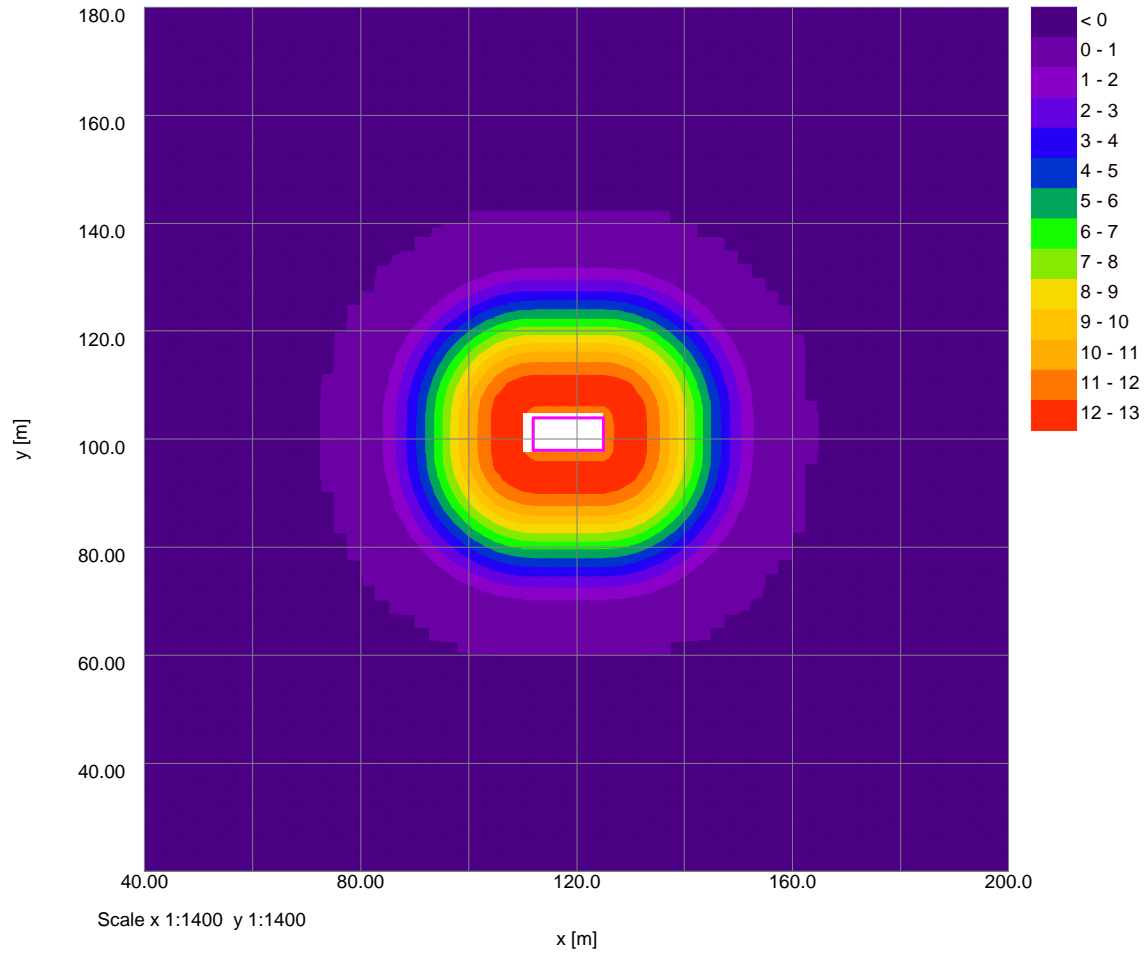
Job No.	Sheet No.	Rev.
J12045a		
Drg. Ref.		
Made by HD	Date 14-Oct-2014	Checked

Horizontal Displacement Contours: Grid 1 (level 107.400m) Interval 1mm



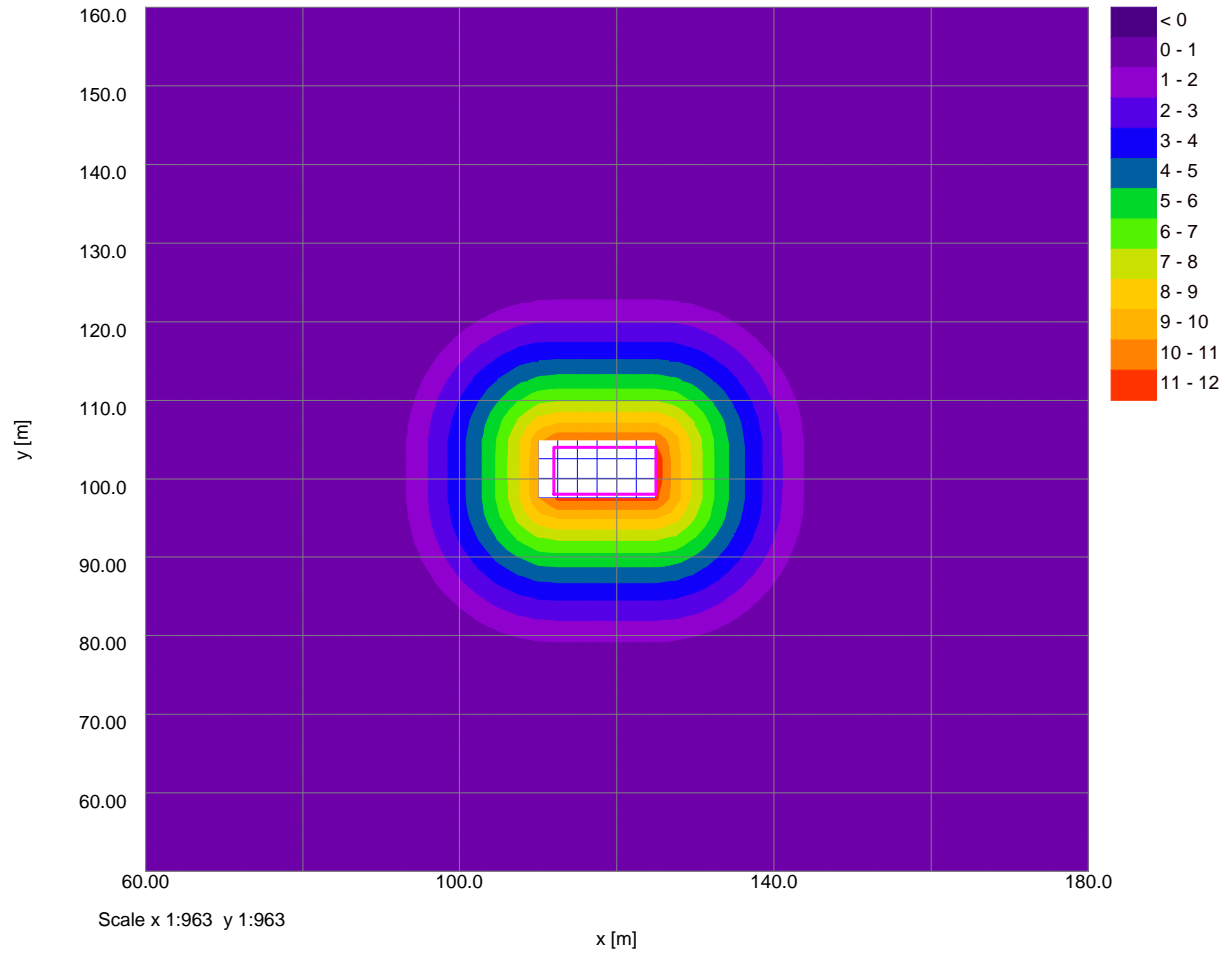
Job No.	Sheet No.	Rev.
J12045a		
Drg. Ref.		
Made by HD	Date 14-Oct-2014	Checked

Vertical Settlement Contours: Grid 1 (level 107.400m) (Interval 1mm)



Job No.	Sheet No.	Rev.
J12045a		
Drg. Ref.		
Made by HD	Date 13-Oct-2014	Checked

Horizontal Displacement Contours: Grid 1 (level 107.400m) Interval 1mm



Job No.	Sheet No.	Rev.
J12045a		
Drg. Ref.		
Made by HD	Date 13-Oct-2014	Checked

Vertical Settlement Contours: Grid 1 (level 107.400m) (Interval 1mm)

