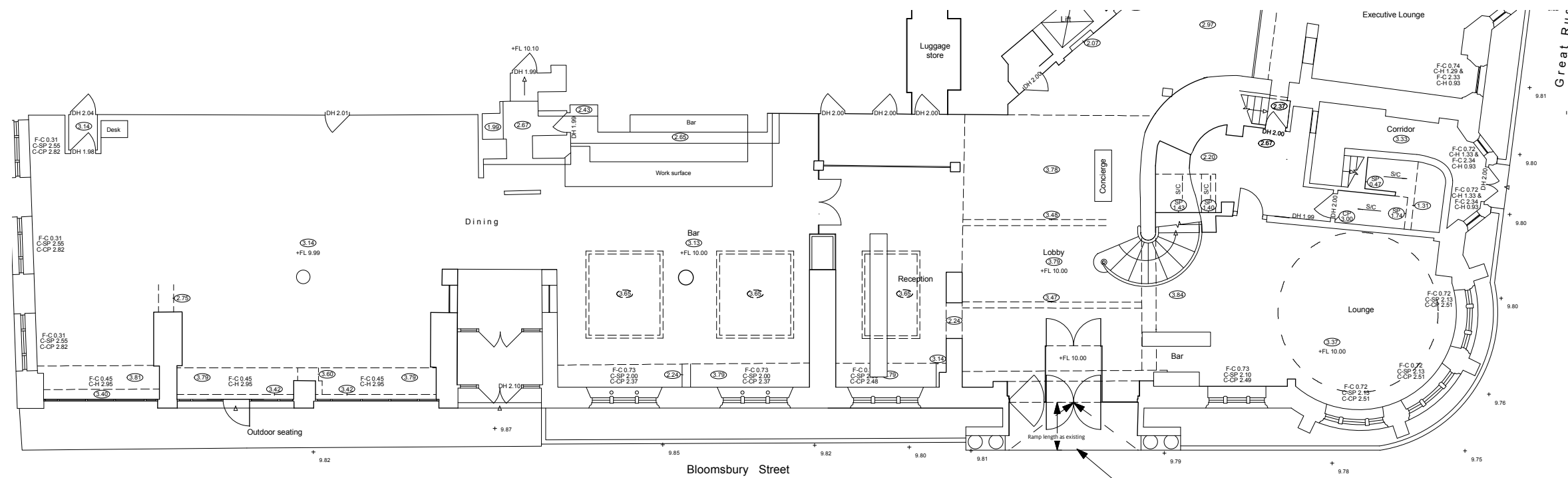




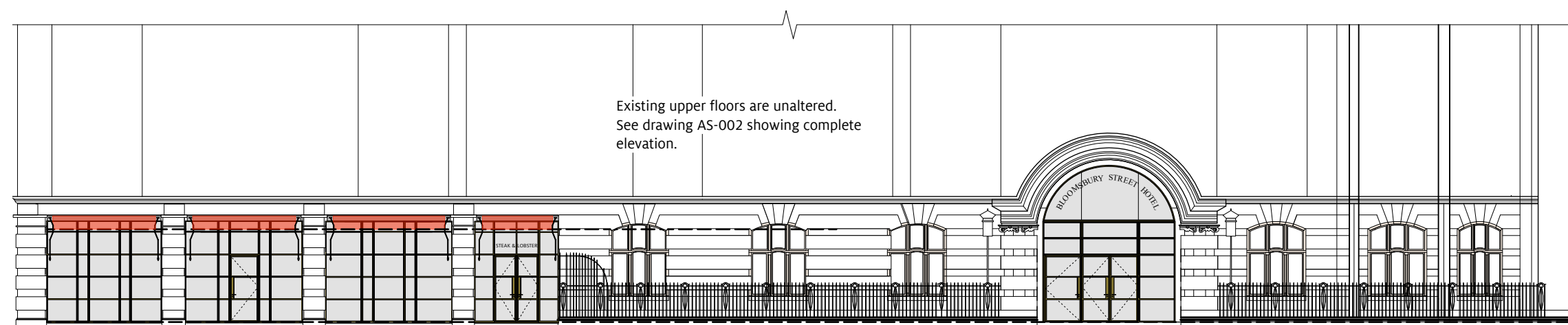
THIS DRAWING IS © ETTWEIN BRIDGES ARCHITECTS LLP. DO NOT SCALE OFF THIS DRAWING. ANY DIMENSIONS SHOWN MUST BE CHECKED ON SITE BEFORE CONSTRUCTION OR MANUFACTURE

NOTES:



Existing shop-fronts to be replaced with metal framed glazing and glazed doors as shown.

PART- GROUND FLOOR PLAN



Existing shop-fronts to be replaced with metal framed glazing and glazed doors as shown.

ELEVATION OF GROUND FLOOR TO BLOOMSBURY STREET

B	16/12/14	Revisions following client mtg. 12.12
A	09/12/14	Revisions following client mtg. 05.12
REV	DATE	DESCRIPTION

PROJECT
BLOOMSBURY ST HOTEL
9-13 Bloomsbury Street, WC1B

TITLE
**GROUND FLOOR
PROPOSED**

DRAWING STATUS
PLANNING

DRAWN ** CHECKED ** SCALES 1:125 @ A2

J926 PL 001 B

ETTWEIN BRIDGES
ARCHITECTS
53 Rawsorne Street
London EC1V 7NQ
T: 020 7837 1008
F: 020 7837 4008
E: mail@ebarch.com

Registered in England and Wales. Partnership No. OC 383122