

GENERAL NOTES

- This drawing has been based on the following Bennetts Associates Architects drawings

1217-20-099-WIP 140115
1217-20-100-WIP 140115
1217-20-101-WIP 140115
1217-20-102-WIP 140115
1217-20-103-WIP 140115
1217-20-104-WIP 140115
1217-20-105-WIP 140115
1217-20-106-WIP 140115
1217-20-107-WIP 140115
1217-20-108-WIP 140115
1217-20-210-WIP 140115
1217-20-220-WIP 140115

AD1	17.10.14	ISSUED FOR LUL APPROVAL		FR
Rev	Date	Description		B

	Amendments
Project	One Bedford Avenue

Title

GROUND FLOOR GENERAL
ARRANGEMENT - CONCRETE

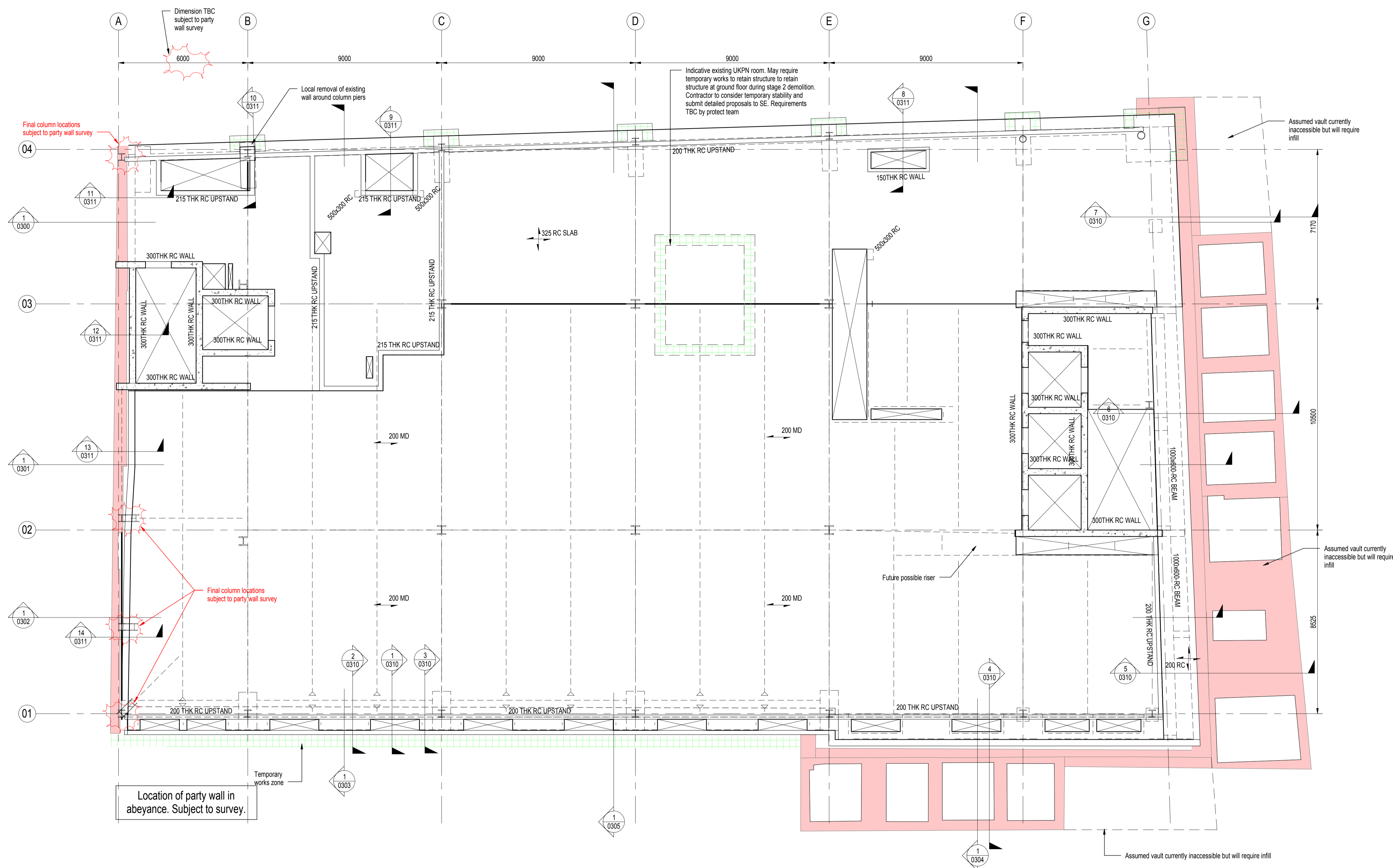
Client	Exemplar Properties (Bedford) Ltd
--------	-----------------------------------



Pickfords Wharf Clink Street London SE1 9DG
United Kingdom
t +44 20 7928 7888 f +44 3333 444 501
mail@watermangroup.com www.watermangroup.com

info@watermarkgroup.com www.watermarkgroup.com			
Drawing Status			
<h1>FOR LUL APPROVAL</h1>			
Designed By	Designer	Checked By	Checker
Drawn By Author		Date	Project No STR11621
Scales @ A1 As indicated		Works Order No	

Publisher	Zone	Category	Number	Revision
WSL	SA	20	0100	A01



Steel columns supporting RC slab to have shear keys welded.
See typical details.