

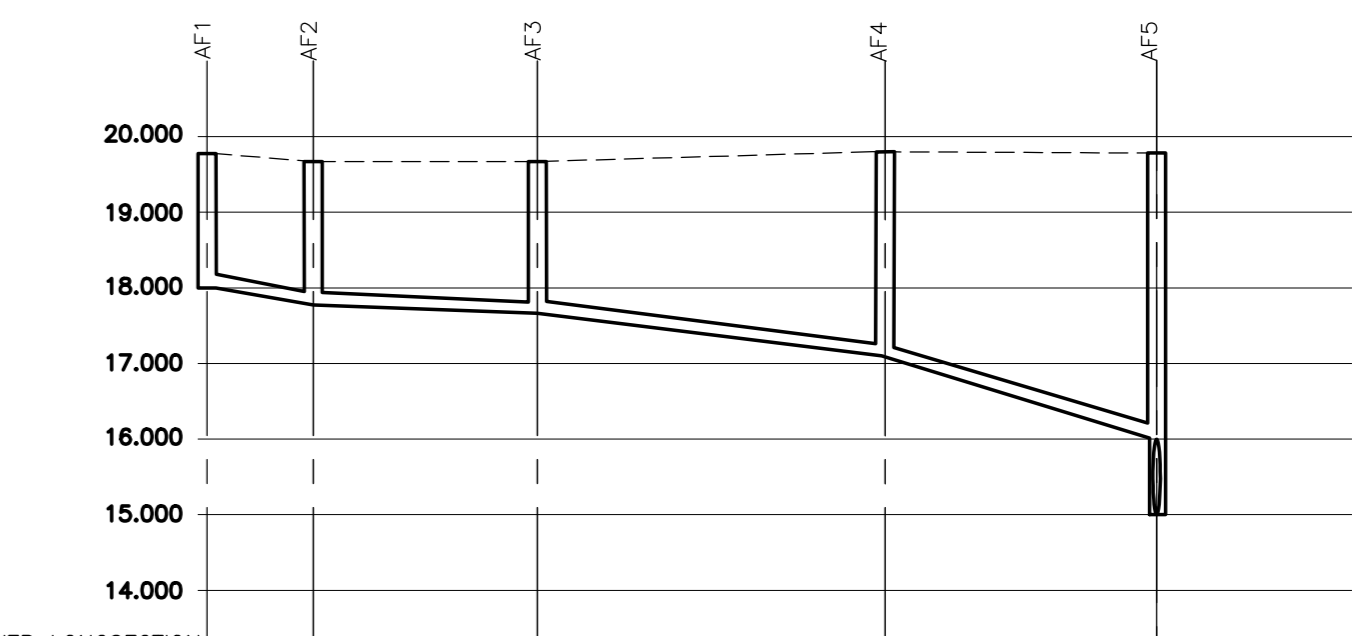
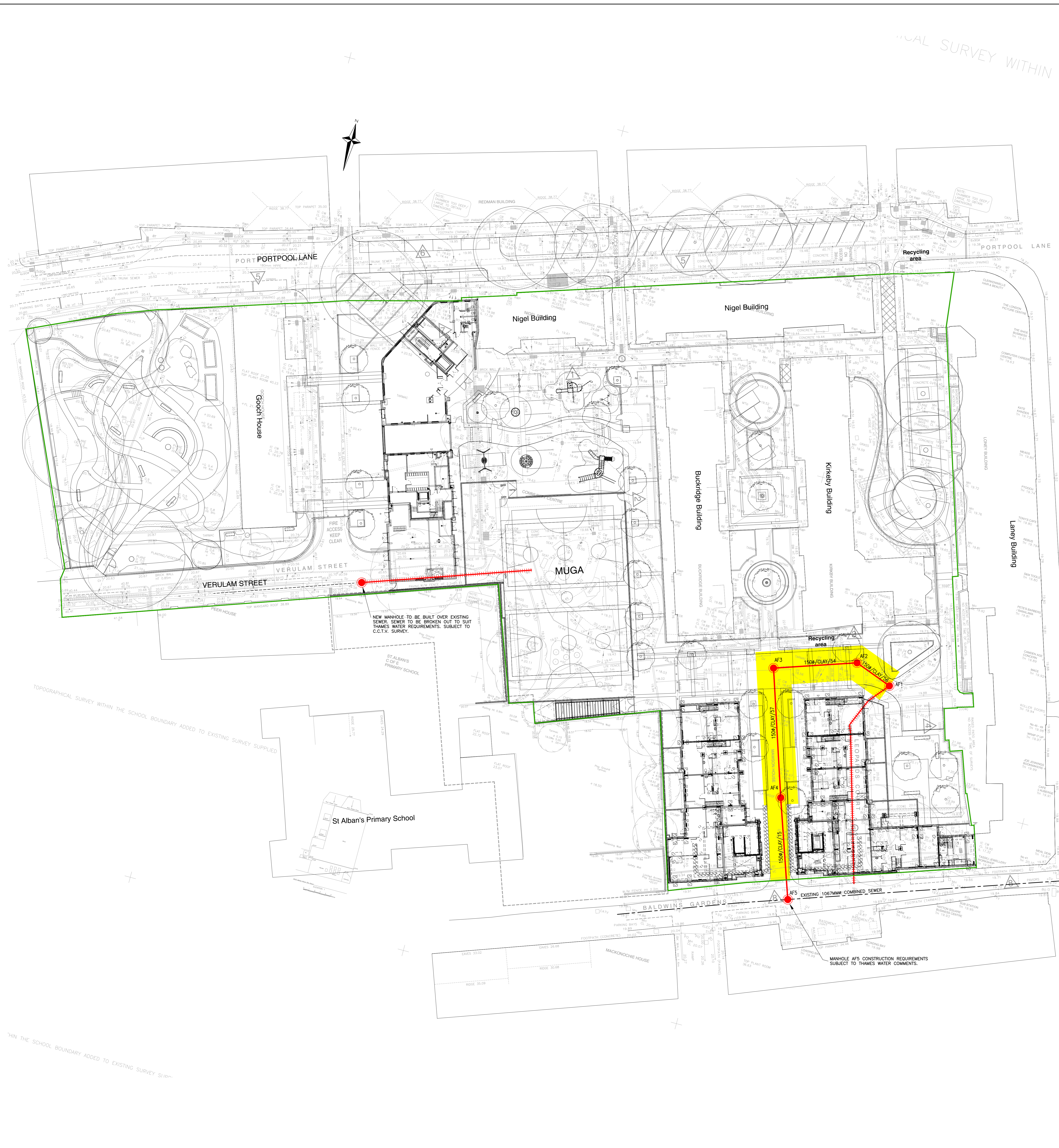
ADOPTABLE MANHOLE SCHEDULE

Manhole Number	Cover Level	Connections	Pipe			Manhole Size	Types	
			Code	Inverts	Diams		Manhole	Cover
AF1	19.875		1 2	N/A 18.000	18.000 18.000	150	150	Heavy Duty D400 600mmx600mm 150mm deep
E. 531220.9260 N. 181867.4424	1.725		0	N/A	18.000	150		
AF2	19.775		1	N/A	17.875	150	150	Heavy Duty D400 600mmx600mm 150mm deep
E. 531214.3459 N. 181869.8911	1.750		0	N/A	17.875	150		
AF3	19.775		1	N/A	17.600	150	150	Heavy Duty D400 600mmx600mm 150mm deep
E. 531200.3208 N. 181865.1639	2.025		0	N/A	17.600	150		
AF4	19.800		1	N/A	17.200	150	150	Heavy Duty D400 600mmx600mm 150mm deep
E. 531207.4748 N. 181843.3669	2.450		0	N/A	17.200	150		
AF5	19.850		1 2	N/A N/A	14.933? 16.000?	1067	150	Heavy Duty D400 600mmx600mm 150mm deep
E. 531213.3410 N. 181826.2980	3.850 (TBC)		0	N/A	14.933?	1067		

- Notes:**
- For adapted sewer diversion construction details refer to drawing Thames Water standard drawings, STDS-PL-02021 rev F, STDS-PL-02100 rev I.
 - The contractor is responsible for maintaining existing flows during all phases of diversionary drainage works.
 - All chamber cover levels given are approximate to +/- 50mm.
 - Pipe gradients are for guidance only. For precise invert levels of manholes, please refer to manhole schedule.
 - All works to 'Sewers for Adoption, 6th Edition' and Thames Water's addendum.

Key:

- AF1 Indicates adoptable combined sewer
- Indicates sewer to be diverted
- Sewer Easement
- 150#/CLAY/95 Pipe Diameter / Material / Gradient
- Site Boundary



CHAINAGE	FOULWATER LEVELS	FOULWATER DETAILS
0+00.00	19.875	Dia 150 type CLAY
0+10.00	19.775	Dia 150 type CLAY
0+20.00	19.775	Dia 150 type CLAY
0+30.00	19.800	Dia 150 type CLAY
0+40.00	19.800	Dia 150 type CLAY
0+50.00	19.850	Dia 150 type CLAY
0+60.00	19.850	Dia 150 type CLAY
0+70.00	19.850	Dia 150 type CLAY

LONGSECTION— H=1:500, V=1:100

REV	DATE	AMENDMENT	BY	CHKD
A	21.08.14	COMBINED SEWER COLOUR CHANGED TO RED.		DMP

STATUS: **TENDER**

PROJECT: **BOURNE ESTATE LONDON**

CLIENT: **Higgins**

DRAWING: **SEWER DIVERSION / DIVESTING PLAN SECTION 104/116**

DATE: 07.04.14 DRAWN BY: DMP
 SCALES (H/M): 1:250 CHECKED BY:

DRG NO: **C6475 - CE7.A**

walkerasociates CONSULTING LIMITED
 12 Capricorn Centre, Crane Farm Road, Boreham, Essex SS14 3JJ
 Tel: 01206 530 000 Fax: 01206 28 00 28
 www.walkerasociates.co.uk