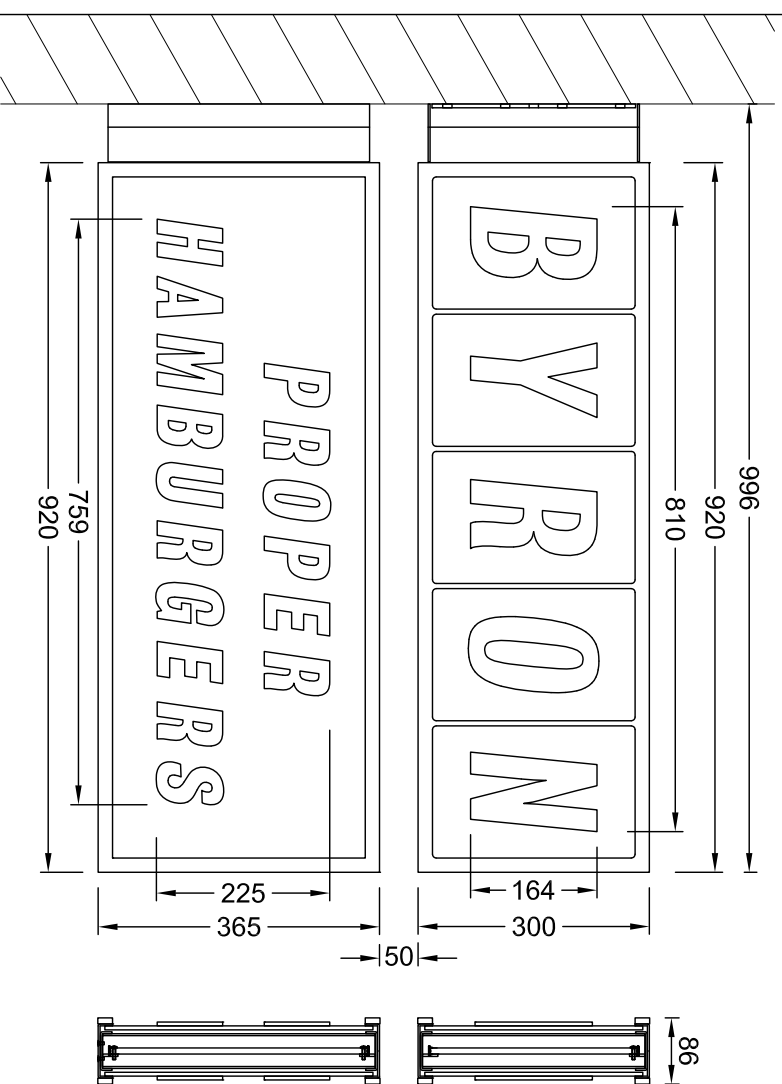
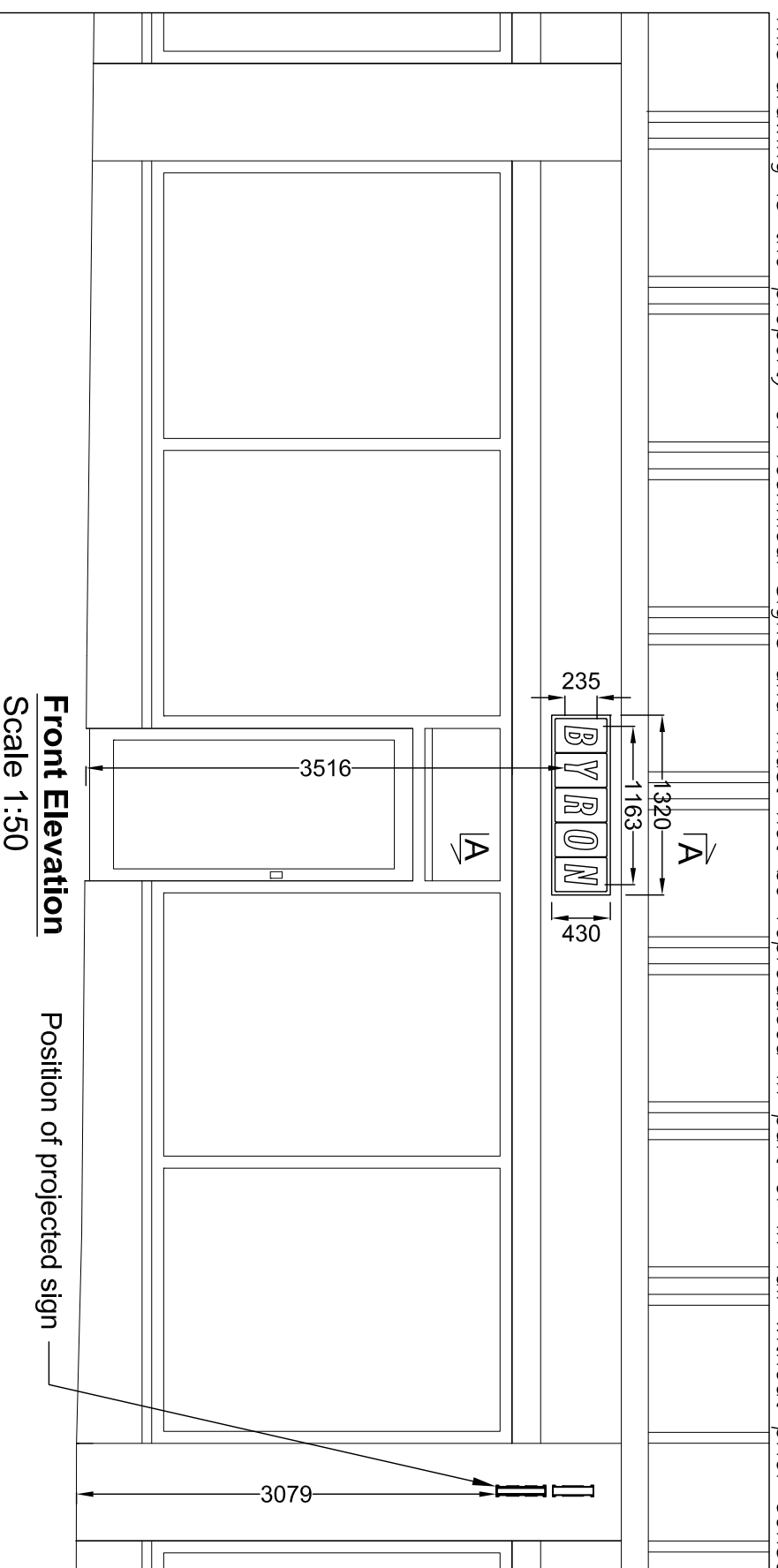


# Existing



## Projected Sign - 1 off

Scale 1:10

The two light boxes are made from folded and welded 2.5mm aluminium which is finished satin black.

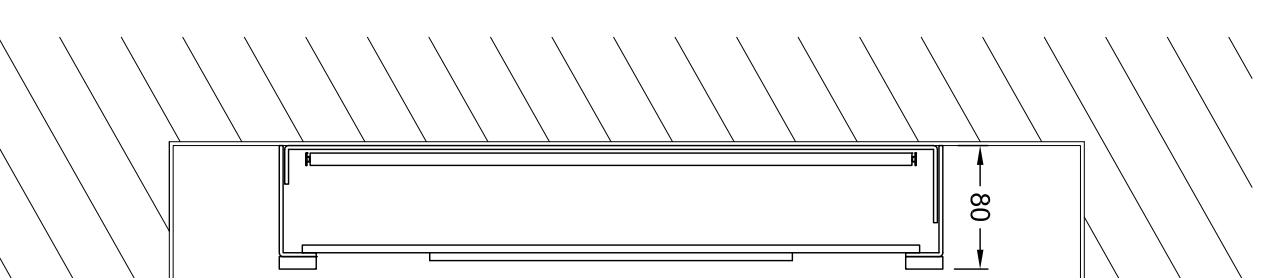
Borders around the edge of the faces are flat cut 8mm aluminium which is finished satin black and which is adhered to the faces.

Gaps in the faces are backed up with 5mm opal acrylic.

The text is opaque 5mm black acrylic which is adhered to the opal acrylic.

Light boxes are internally illuminated by warm white LEDs.

Inner frames are welded to fixing arms which are covered by a folded 2.5mm aluminium shroud finished satin black.



## Section A-A through the text

Scale 1:5

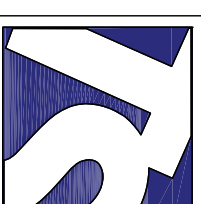
Light box is made from folded and welded 2.5mm aluminium which is finished satin black.

Border around the edge of the face is flat cut 8mm aluminium which is finished satin black and which is adhered to the face.

Gaps in the face are backed up with 5mm opal acrylic.

The text is opaque 5mm black acrylic which is adhered to the opal acrylic.

Light box is internally illuminated by warm white LEDs.



**Technical Signs**  
Floor 1 - Unit 3  
Hille Business Centre  
132 St Albans Road  
Watford, Herts, WD24 4AE  
Tel: 01923 811999  
Fax: 01923 811998  
E-mail: info@technicalsigns.co.uk

Client: Byron

Address/job details

Unit 2 Jamestown Lock  
Camden Lock  
NW1 7BY

Existing Signage

Job No

Drawn by: DN Date: 05/12/14

Scale: As specified (A3) Drawing No: 457443-1

Rev