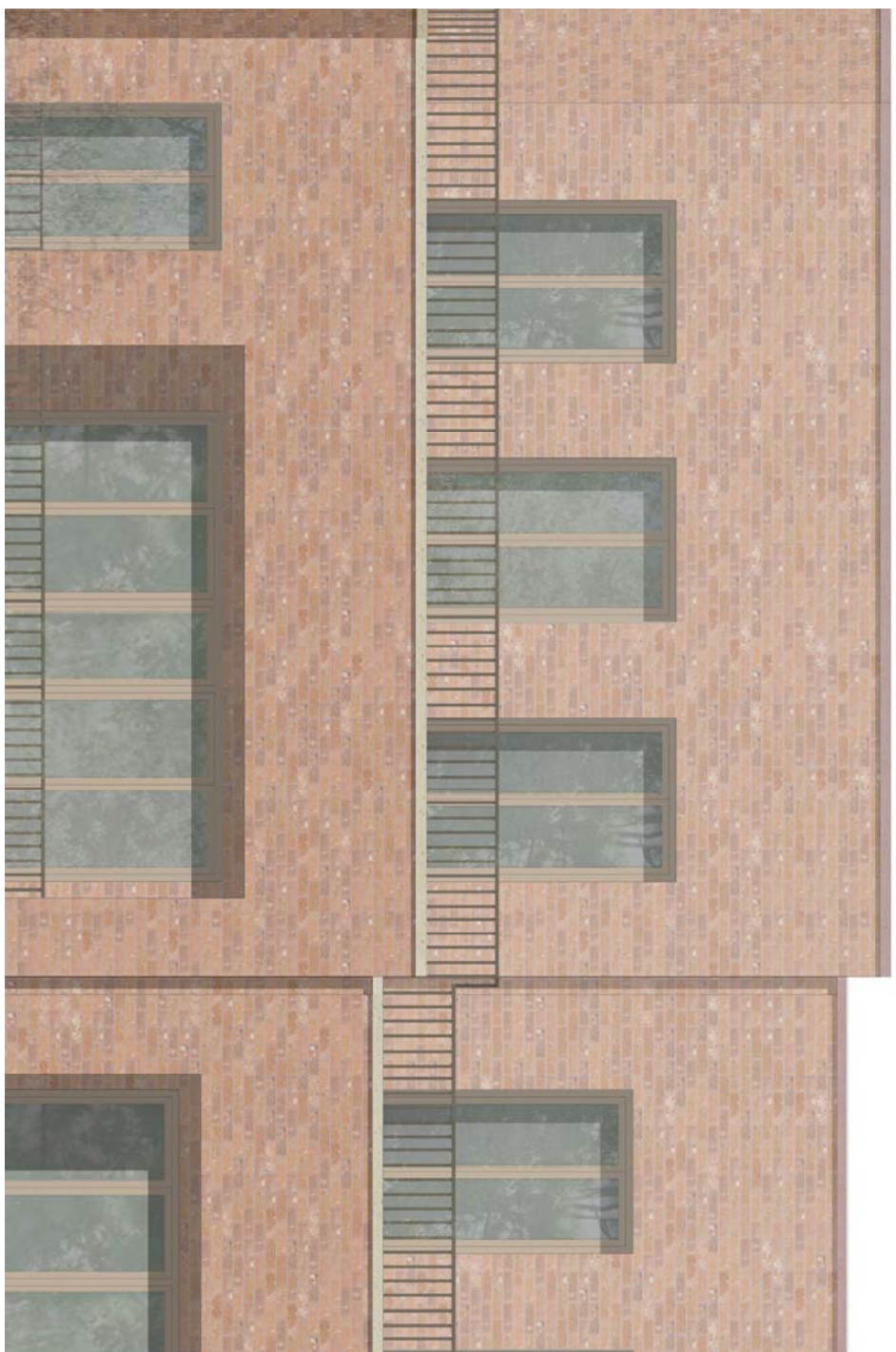


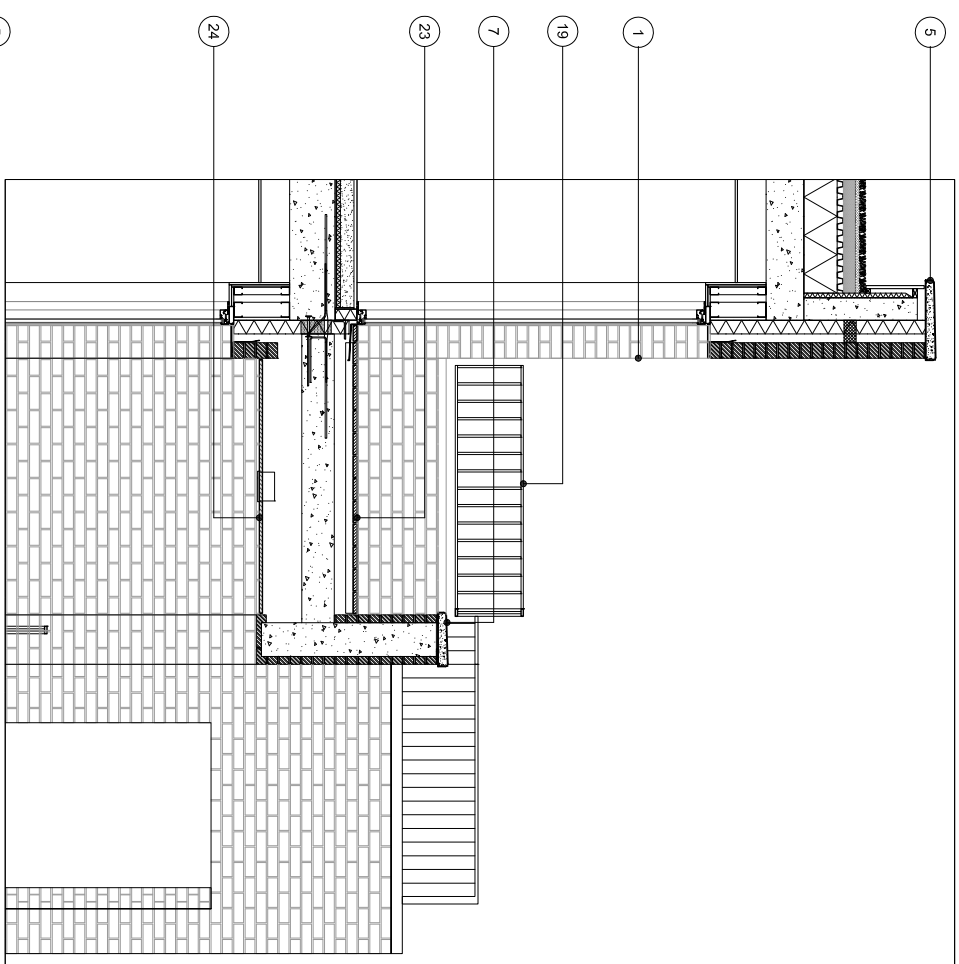
A



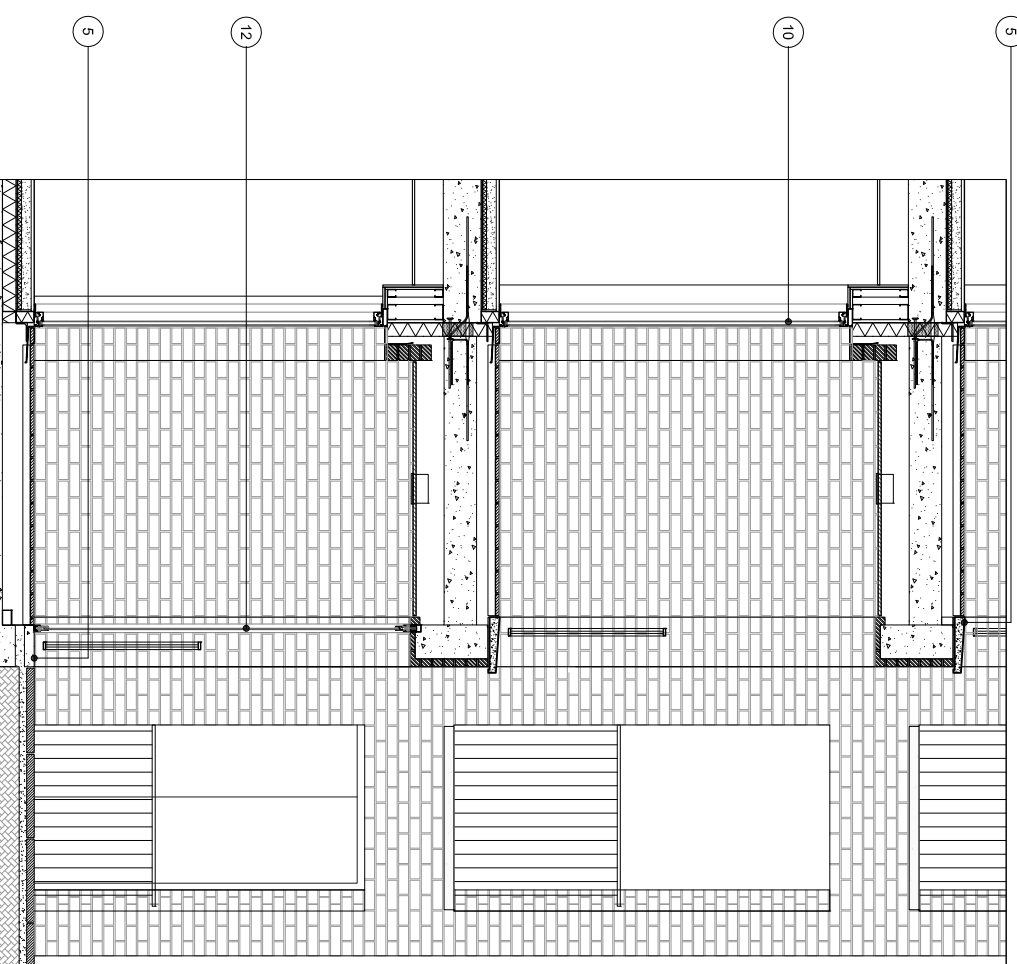
Residential Block C South Elevation

A

5



5



Section A-A



Do not scale from this drawing. Verify all dimensions on site. Drawing should be read in conjunction with information from all other design consultants and contractors. All drawings in digital format are for reference only, paper copies are available on request.

FOR PLANNING

© Maccreanor Lavington Ltd.

MATERIALS KEY

- Solid facing Renaissance Multi brick by "Wehrberger", or similar approved. To be laid in stretcher bond with terracotta colour mortar joint. "Tamarac" colour ref: Y127 or similar approved
- Solid facing Heritage Blend brick by "Wehrberger", or similar approved. To be laid in stretcher bond with natural light grey colour mortar joint, colour ref: CPI Eurobrick, M3ANK100" or similar approved
- Frame Facing Heritage Blend Brickwork by "Wehrberger", or similar approved. To be laid in stretcher bond with natural light grey colour mortar joint, colour ref: CPI Eurobrick, M3ANK100" or similar approved
- knill Facing Renaissance Multi Brickwork by "Wehrberger", or similar approved. To be laid in stretcher bond with natural light grey colour mortar joint, colour ref: CPI Eurobrick, M3ANK100" or similar approved
- Terracotta reconstituted stone sills, copings and spandrel panels
- Portland Stone reconstituted stone sills and copings
- Bath Stone reconstituted stone entrance surround and copings
- Aluminium sill anodized exterior finish, ref: Anodok 541
- Inward opening composite aluminium casement windows, anodized exterior finish, ref: Anodok 541
- Inward opening composite aluminium casement windows, anodized exterior finish, ref: Anodok 543
- Inward opening aluminium windows, anodized exterior finish, ref: Anodok 541
- Inward opening aluminium windows, anodized exterior finish, ref: Anodok 543
- Inward opening aluminium winter gardens, anodized exterior finish, ref: Anodok 541
- Aluminium door frames, anodized exterior finish, ref: Anodok 541
- Aluminium door frames, anodized exterior finish ref: Anodok 543
- Steel louvered doors to plant rooms, polyester powder coated, matt, RAL 7006
- Steel louvered doors to plant rooms, polyester powder coated, matt, RAL 8014
- Balcony balustrades in polyester powder coated steel, matt, RAL 7006
- Balcony balustrades in polyester powder coated steel, matt, RAL 8014
- Steel signage polyester powder coated, matt, RAL 7006
- Steel signage polyester powder coated, matt, RAL 8014
- Glass mosaic tiling to entranceway, gold and white colour
- Messaramulda hardwood timber decking or similar approved
- Balcony soffits rendered cementitious board, terracotta colour

Rev	Details	Drawn	Date

Application 02

Expansion of Kingsgate Primary School & Redevelopment of Liddell Road Phase 02

Client: London Borough of Camden
 Title: Residential Block C Bay Study
 Sitep Section 02
 Scale: 1:50 @ A3
 Date: 01-12-2014

Drawn: TO

MLUK / 403 / P2 / 571

Maccreanor Lavington

3rd Floor
 19-21 Nile Street
 London N1 7TL
 t +44(0)207 336 73 53
 f +44(0)207 336 76 55
 e info@ml-lr-architects.com