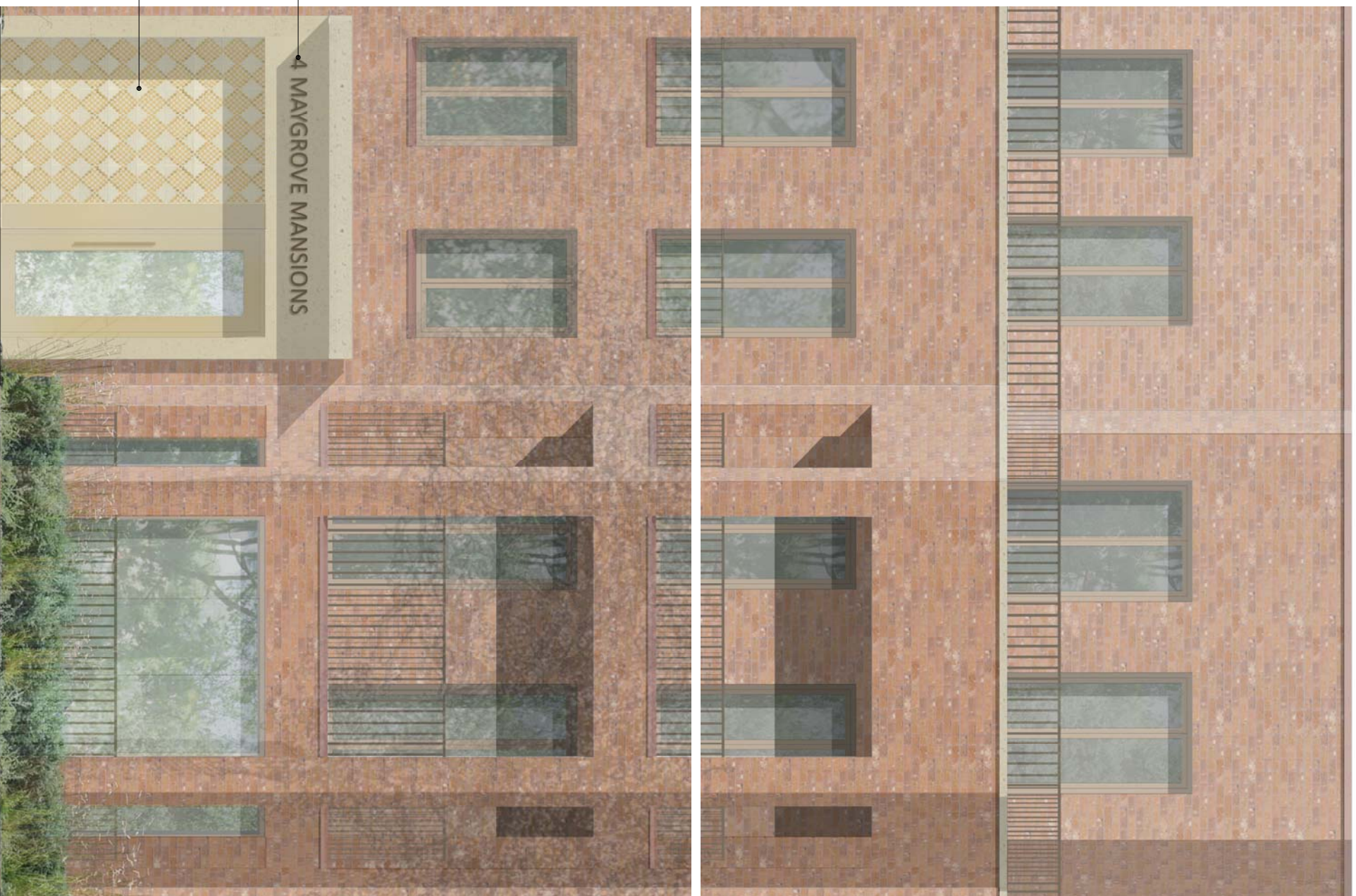


A

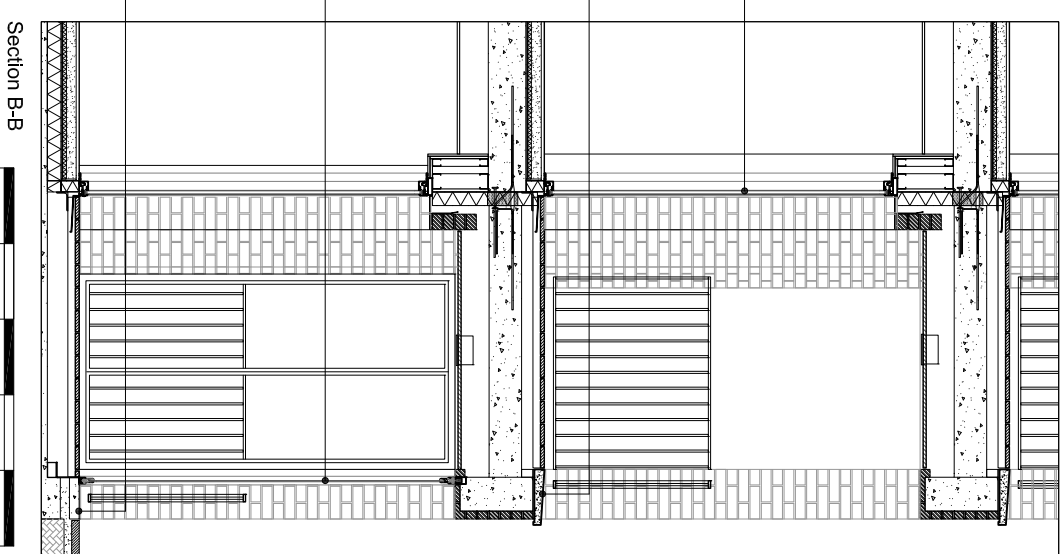
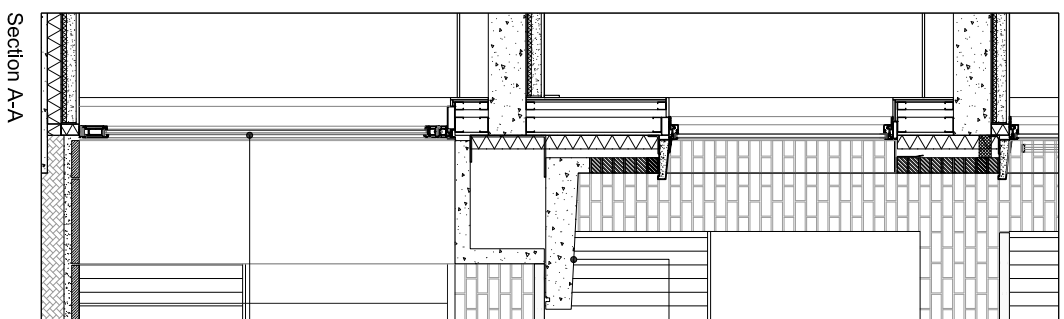
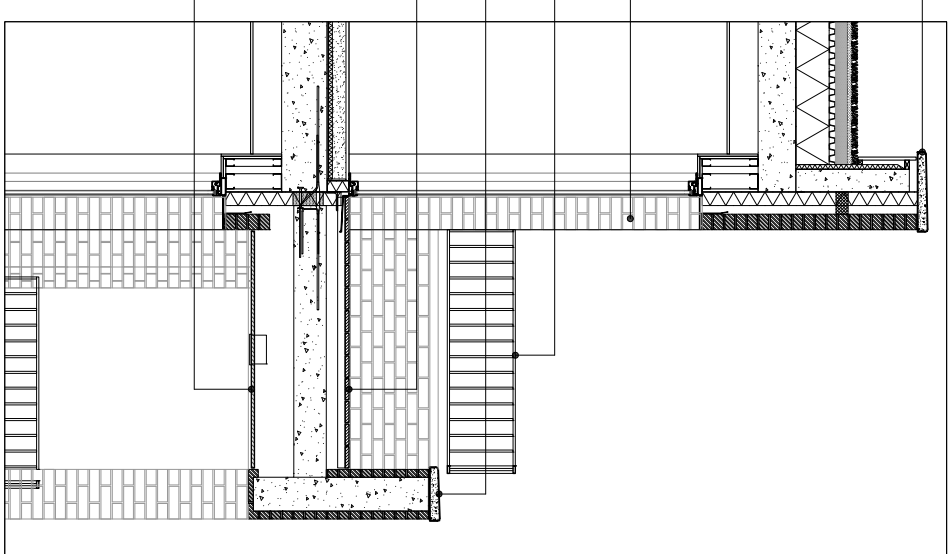
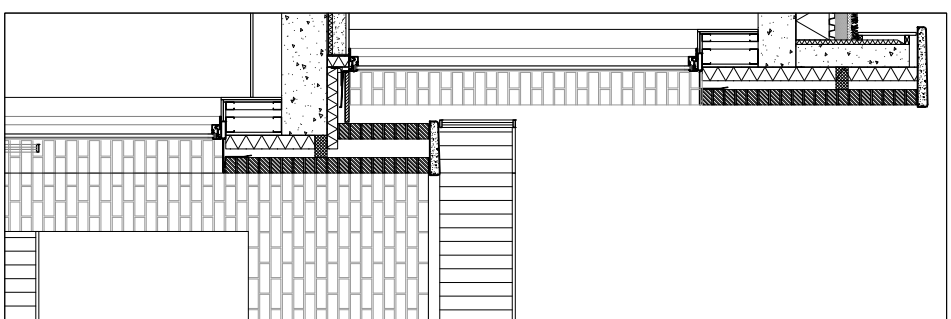
B



Residential Block C South Elevation

A

B



Do not scale from this drawing. Verify all dimensions on site. Drawing should be read in conjunction with information from all other design consultants and contractors. All drawings in digital format are for reference only, paper copies are available on request.

FOR PLANNING

© Maccreanor Lavington Ltd.

MATERIALS KEY

1. Solid facing Renaissance Multi brick by "Wehrberger", or similar approved. To be laid in stretcher bond with terracotta colour mortar joint. "Tamarac" colour ref: Y127 or similar approved
2. Solid facing Heritage Blend brick by "Wehrberger", or similar approved. To be laid in stretcher bond with natural light grey colour mortar joint, colour ref: CPI Euromix, M3ANK100* or similar approved
3. Frame Facing Heritage Blend Brickwork by "Wehrberger", or similar approved. To be laid in stretcher bond with natural light grey colour mortar joint, colour ref: CPI Euromix, M3ANK100* or similar approved
4. Infill Facing Renaissance Multi Brickwork by "Wehrberger", or similar approved. To be laid in stretcher bond with natural light grey colour mortar joint, colour ref: CPI Euromix, M3ANK100* or similar approved
5. Terracotta reconstituted stone sills, copings and spandrel panels
6. Portland Stone reconstituted stone sills and copings
7. Bath Stone reconstituted stone entrance surround and copings
8. Aluminium sill anodized exterior finish, ref: Anodok 541
9. Inward opening composite aluminium casement windows, anodized exterior finish, ref: Anodok 541
10. Inward opening composite aluminium casement windows, anodized exterior finish, ref: Anodok 543
11. Inward opening aluminium windows, anodized exterior finish, ref: Anodok 541
12. Inward opening aluminium windows, anodized exterior finish, ref: Anodok 543
13. Inward opening aluminium winter gardens, anodized exterior finish, ref: Anodok 541
14. Aluminium door frames, anodized exterior finish, ref: Anodok 541
15. Aluminium door frames, anodized exterior finish ref: Anodok 543
16. Steel lowered doors to plant rooms, polyester powder coated, matt, RAL 7006
17. Steel lowered doors to plant rooms, polyester powder coated, matt, RAL 8014
18. Balcony balustrades in polyester powder coated steel, matt, RAL 7006
19. Balcony balustrades in polyester powder coated steel, matt, RAL 8014
20. Steel signage polyester powder coated, matt, RAL 7006
21. Steel signage polyester powder coated, matt, RAL 8014
22. Glass mosaic tiling to entranceway, gold and white colour
23. Messeranduba hardwood finisher decking or similar approved
24. Balcony soffits rendered cementitious board, terracotta colour

Rev	Details	Drawn	Date

Application 02
Expansion of Kingsgate Primary School
& Redevelopment of Liddell Road Phase 02

Client: London Borough of Camden
 Title: Residential Block C Bay Study
 Sitep Section 01
 Scale: 1:50 @ A3
 Date: 01-12-2014

Drawn: TO
 Date: MLUK / 403 / P2 / 570

Maccreanor Lavington

3rd Floor
 19-21 Nile Street
 London N1 7TL
 t +44(0)207 336 73 53
 f +44(0)207 336 76 55
 e uk@ml-architects.com