

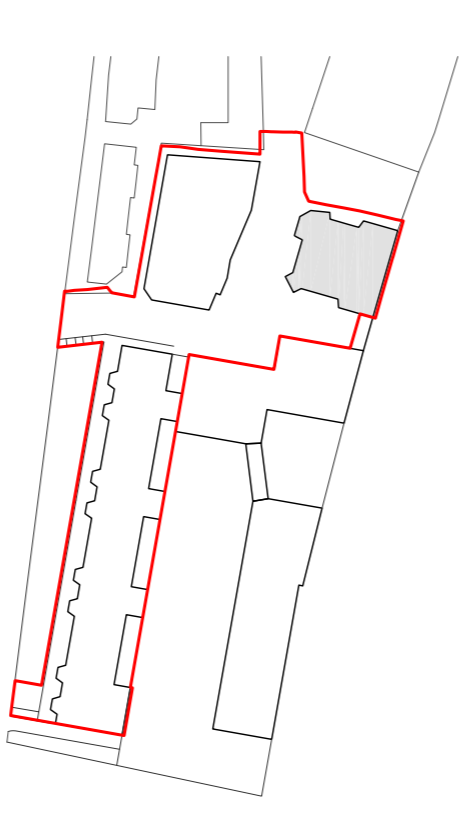
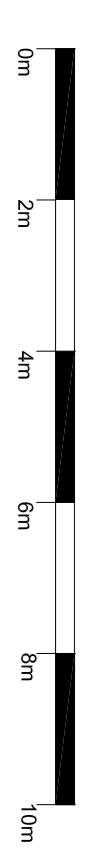
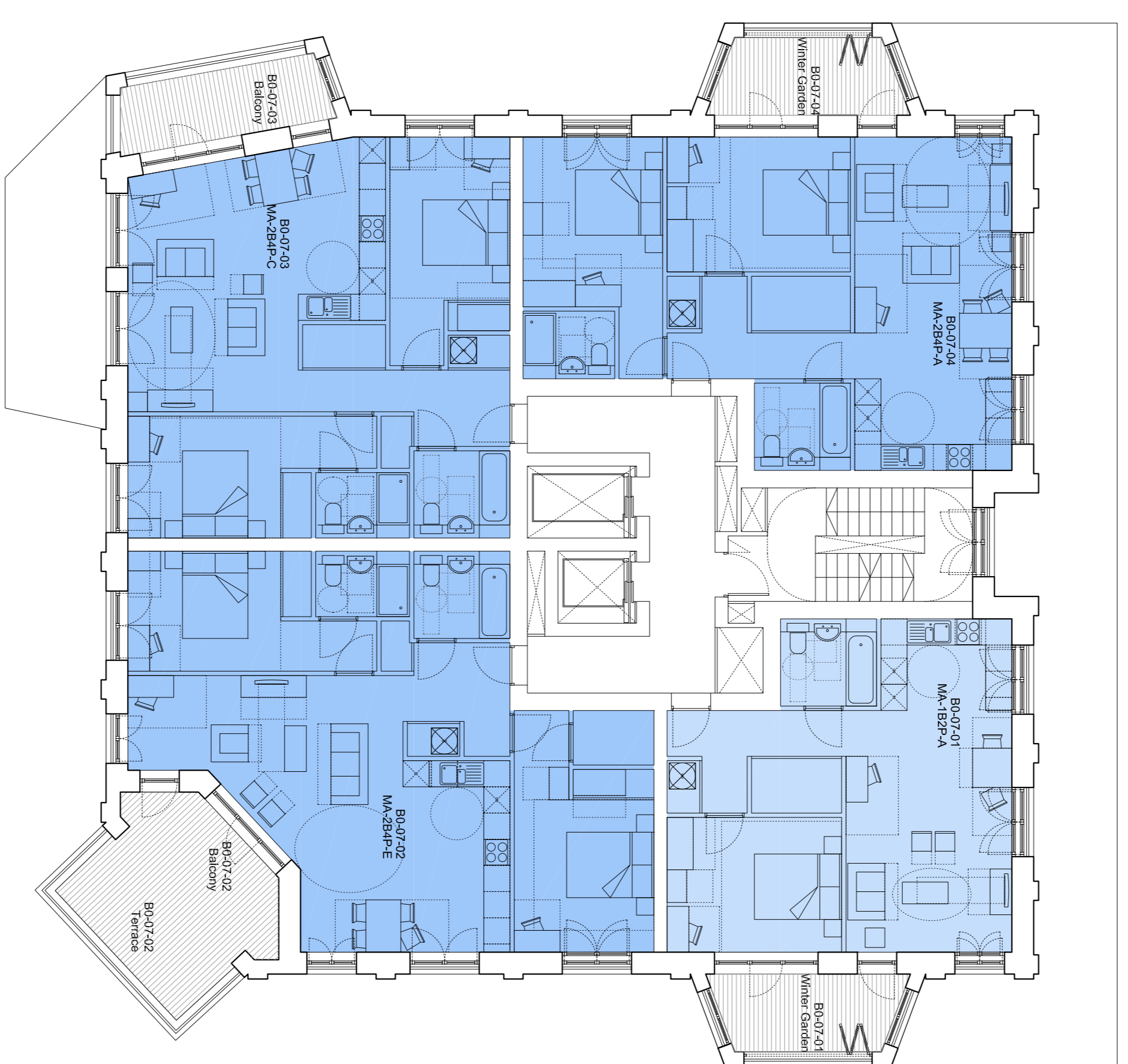
Do not scale from this drawing. Verify all dimensions on site. Drawing should be read in conjunction with information from all other design consultants and contractors. All drawings in digital format are for reference only, paper copies are available on request.

FOR PLANNING

© Maccreanor Lavinigton Ltd.

Tenure Key:

- Market Sale
 - 1b2p
 - 2b4p
 - 3b5p / 3b6p
 - Social Rent
 - 3b5p
 - Intermediate
 - 1b2p
 - 2b4p
 - 3b6p
- Use Key:**
- Residential Lobby/Circulation
 - Residential Ancillary/Storage
 - Plant / Servicing



Rev	Details	Dwn	Date

Application 02
Expansion of Kingsgate Primary School
& Redevelopment of Liddell Road Phase 02

Client: London Borough of Camden
 Title: Residential Block B
 Seventh Floor Plan
 Scale: 1:100 @ A1 / 1:200 @ A3
 Date: 01-12-2014 Drawn: RHR

MLA / 403 / P2 / 157

MaccreanorLavinigton
 3rd Floor
 19-21 Niles Street
 London N1 7LL
 t +44(0)207 336 73 53
 f +44(0)207 336 76 55
 e uk@mlarchitects.com

