

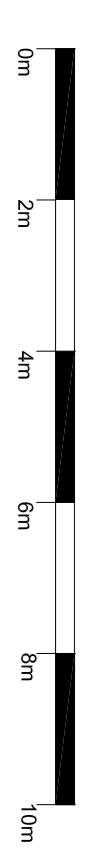
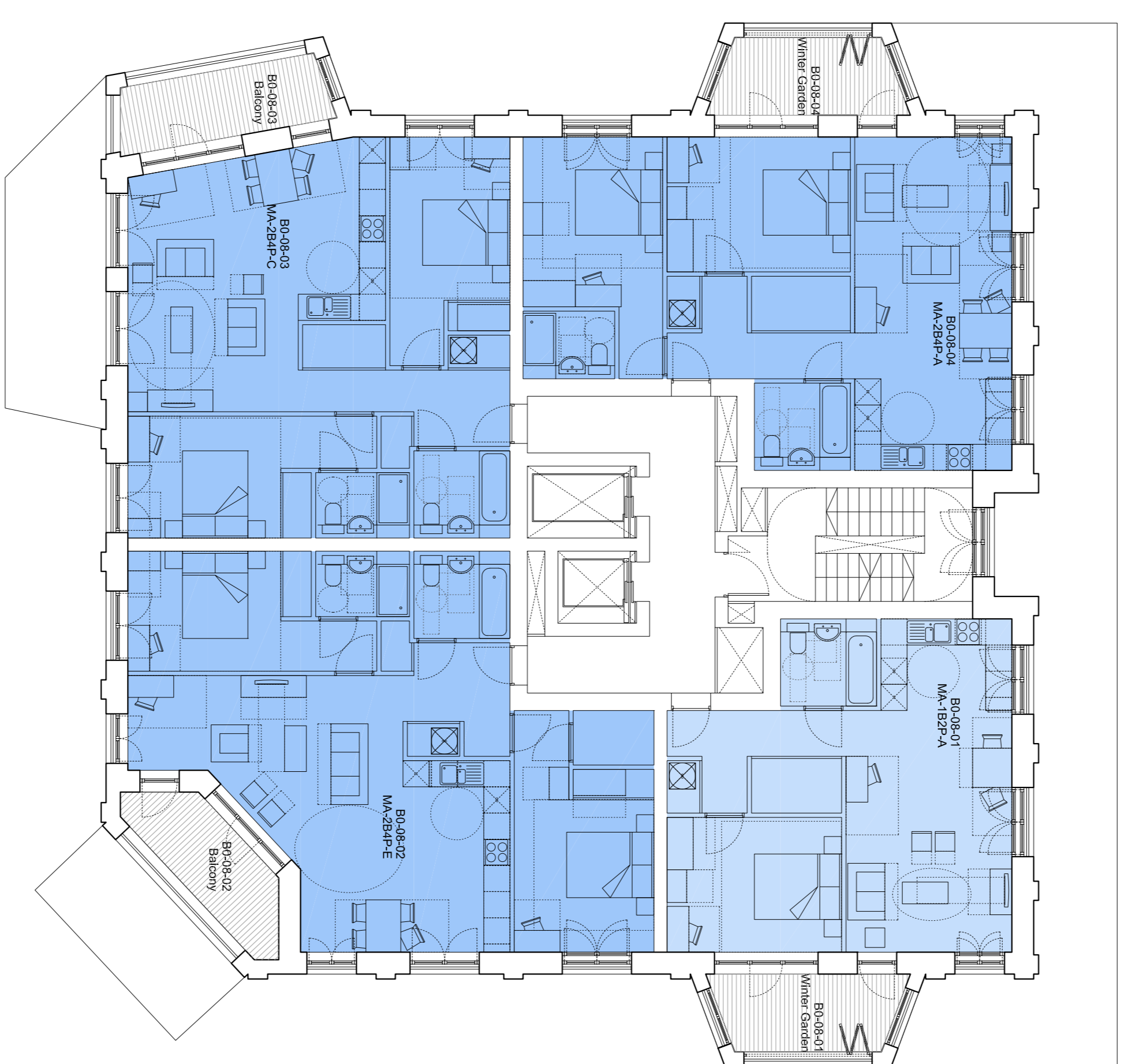
Do not scale from this drawing. Verify all dimensions on site. Drawing should be read in conjunction with information from all other design consultants and contractors. All drawings in digital format are for reference only, paper copies are available on request.

## FOR PLANNING

© Maccreanor Lavington Ltd.

### Tenure Key:

- Market Sale
  - 1b2p
  - 2b4p
  - 3b5p / 3b6p
  - Social Rent
  - 3b5p
  - Intermediate
  - 1b2p
  - 2b4p
  - 3b6p
- Use Key:**
- Residential Lobby/Circulation
  - Residential Ancillary/Storage
  - Plant / Servicing



Rev	Details	Dwn	Date

**Application 02**  
**Expansion of Kingsgate Primary School**  
**& Redevelopment of Liddell Road Phase 02**

Client: London Borough of Camden  
 Title: Residential Block B  
 Title: Eight Floor Plan  
 Scale: 1:100 @ A1 / 1:200 @ A3  
 Date: 01-12-2014 Drawn: RHR

**MLA / 403 / P2 / 158**

**MaccreanorLavington**  
 3rd Floor  
 19-21 Niles Street  
 London N1 7LL  
 t +44(0)207 336 73 53  
 f +44(0)207 336 76 55  
 e uk@mlarchitects.com

