

4.7 Appearance

The school building has been designed to sit harmoniously with the other new buildings on the masterplan site, but also to offer a distinct and legible quality as a public building. The development of the west elevation of the building, including the highly articulated roof profile, provides the school with a strong and visible presence in the new public space, viewed from both approaches (Maygrove Road and Maygrove Peace Park).



Visualisation of Kingsgate School relationship to new public space

4.7 Appearance



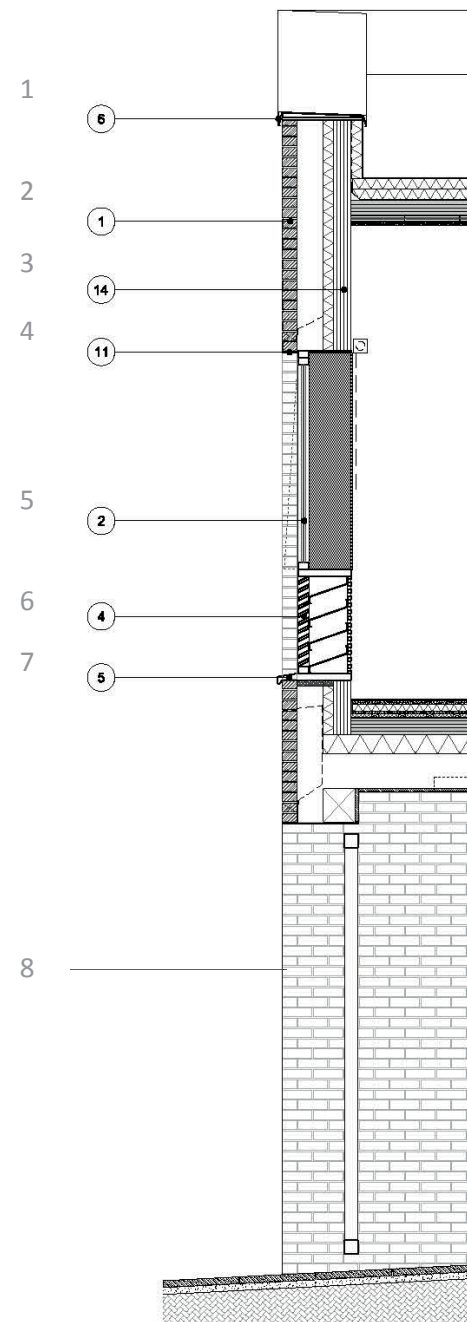
North London Hospice

Architect: AHMM

- Civic presence
- Pitched roofs
- Use of brick

Material Key

1. Aluminium coping polyester powder coated
2. Solid facing Mystique brick stretcher bond with grey mortar
3. Cross Laminated Timber structure
4. Aluminium soffit plate polyester powder coated
5. Composite aluminium casement windows polyester powder coated
6. Steel integrated louvered ventilation panel, polyester powder coated
7. Aluminium sill polyester powder coated
8. Anodized aluminium entry door



Strip section through Building 1 entrance



School bay study of Building 1 entrance

4.7 Appearance



Visualisation of the new public space showing the connection Kingsgate Primary School has with Maygrove Road through the signage on the south elevation of the entrance block

4.7 Appearance

In order to provide a protected, calm teaching environment, the extent of the building which faces directly onto the street is limited, consistent with the feedback from the School Building Review Group. The articulation of the elevations which face the street is therefore critical in creating a strong presence in the community. High quality signage is proposed to the south facing elevation of the hall, so as to be visible from Maygrove Road. A distinctive green roof has been added to the hall, also acting as a sign-post to the school.



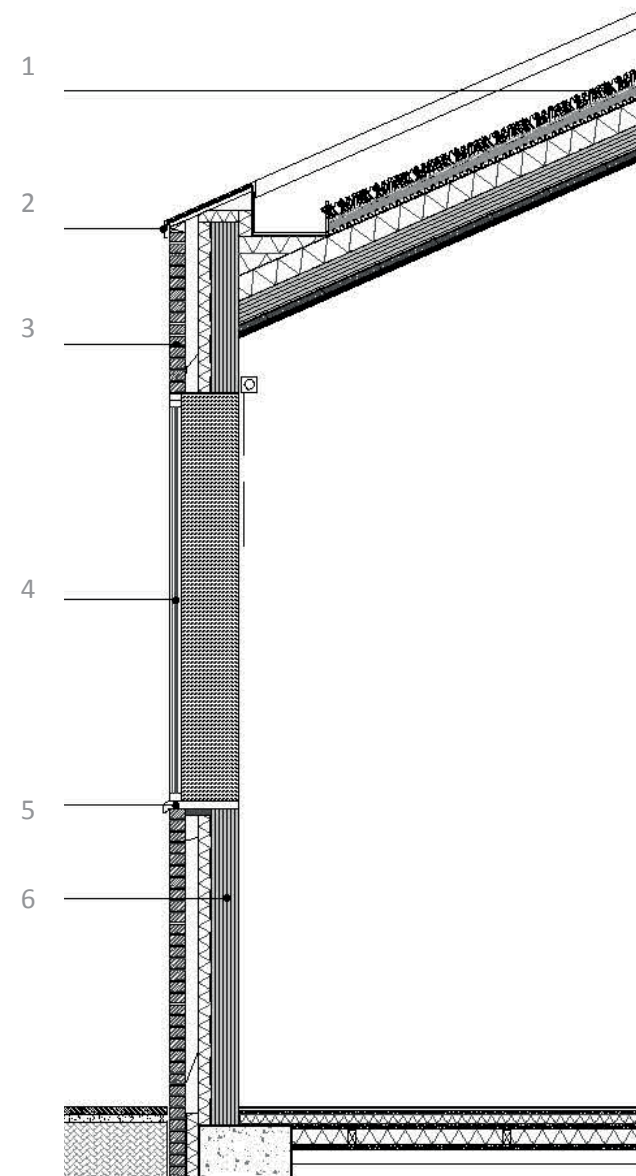
Lauriston School, Hackney, London

Architect: Maccreanor Lavington

- Street signage

Material Key

1. Green roof
2. Aluminium coping polyester powder coated
3. Solid facing Mystique brick stretcher bond with grey mortar
4. Composite aluminium window polyester powder coated
5. Aluminium sill polyester powder coated
6. Cross Laminated Timber structure



Strip section through Building 1 south elevation



School bay study of Building 1 signage

4.7 Appearance

External materials

The predominant material palette for the scheme is brick which aims to help integrate the new proposal with the local context. The proposed brick for the school will share a common textural quality with the bricks of the two residential buildings and the worksapce. but will have a lighter tone with white washed sections given the building a brightness that will stand out against the dark red of the neighbouring mansion block..

Outline Specification

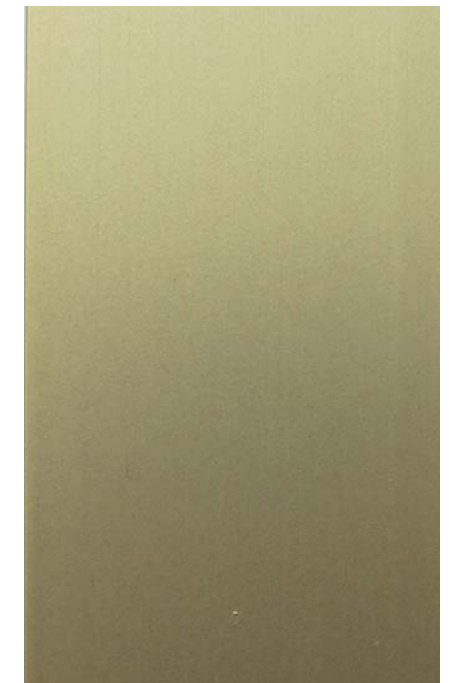
| Item | Product | Finish |
|---------------------------------------|--|---|
| Bricks | Mystique blend (by Traditional Brick and Stone) | Yellow stock, multi-textured brick to be laid stretcher bond with natural light grey mortar (CPI Euormix, M3ANK100) |
| Windows and vents | Composite aluminium windows (by Velfac or similar approved) | PPC matt (RAL 7006 beige grey), white painted timber interior finish |
| Entrance doors | Composite aluminium entrance doors (by Velfac or similar approved) | PPC matt (RAL 7006 beige grey), white painted timber interior finish |
| Bin stores and service entrance doors | Composite aluminium entrance doors (by Velfac or similar approved) | Polyester powder coated, matt (RAL 7006, beige grey) |
| Canopy and walkway balustrades | PPC galvanized hot dip steel | PPC metallic, Champagne |
| Timber Decking | Massaranduba hardwood (FSC Certified) timber decking (or similar approved) | Natural planed finish with 3mm saps |



Yellow stock, multi-textured brick in stretcher bond, Mystique Blend by Traditional Brick and Stone or similar approved



RAL 7006, Beige Grey



Anolok, Regency Gold

4.7 Appearance

The school building has been developed to maximise useful teaching spaces and minimise the construction of space which cannot be occupied by learning activities – specifically aiming to minimise the extent of circulation space. To that end, ground floor circulation is typically provided by covered external walkways. These are defined on the eastern block by a brick colonnade. The set back of the classrooms at ground floor behind this colonnade provides the building with relief and shadow alongside the benefits of covered outdoor learning areas and a welcoming space for parents and carers to drop-off children on rainy days.



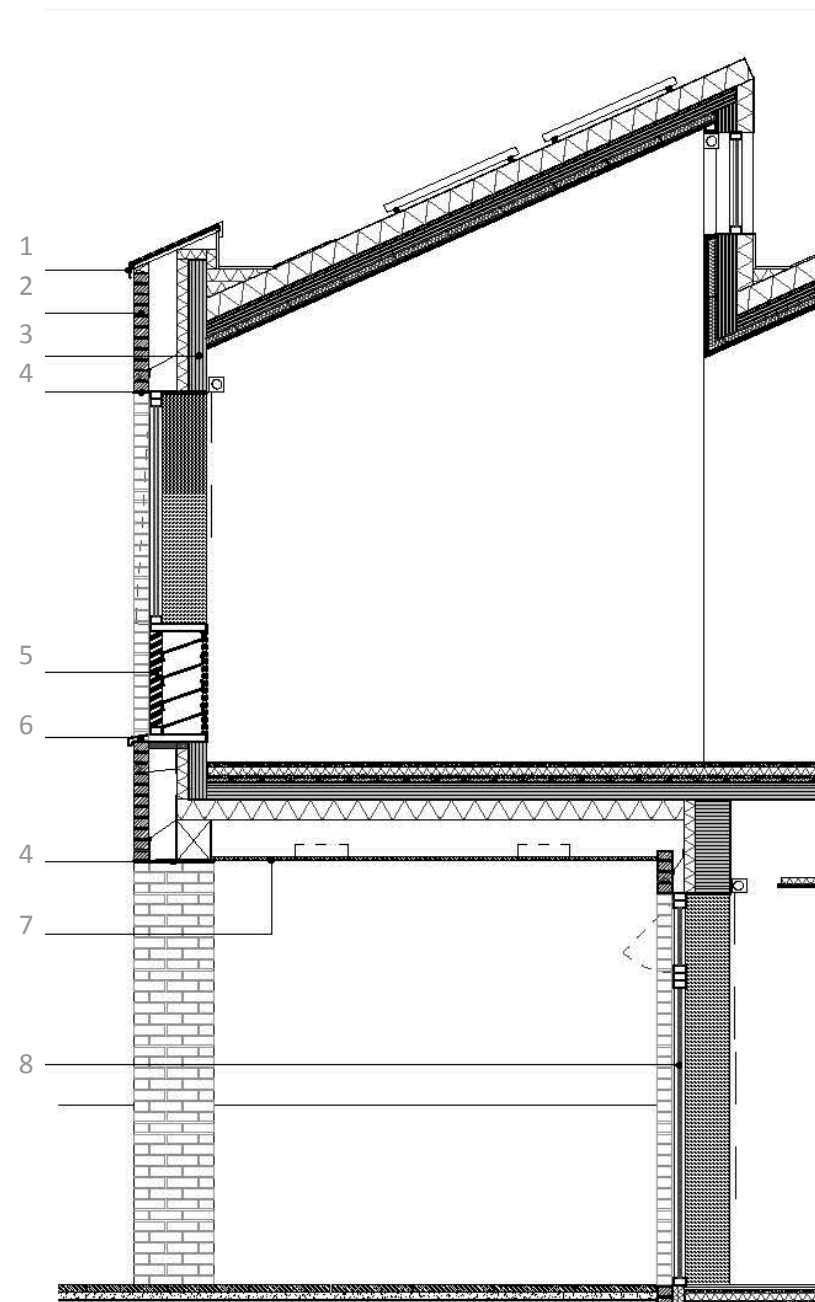
Hazelgrove School, Somerset

Architect: Feilden Fowles

- Civic presence
- Colonnade
- Welcoming entrance

Material Key

1. Aluminium coping polyester powder coated
2. Solid facing Mystique brick stretcher bond with grey mortar
3. Cross Laminated Timber structure
4. Aluminium soffit plate polyester powder coated
5. Steel integrated louvered ventilation panel polyester powder coated
6. Aluminium sill polyester powder coated
7. Timber slatted soffit with integrated linear lighting
8. Composite aluminium door polyester powder coated



Strip section through Building 2 south facade

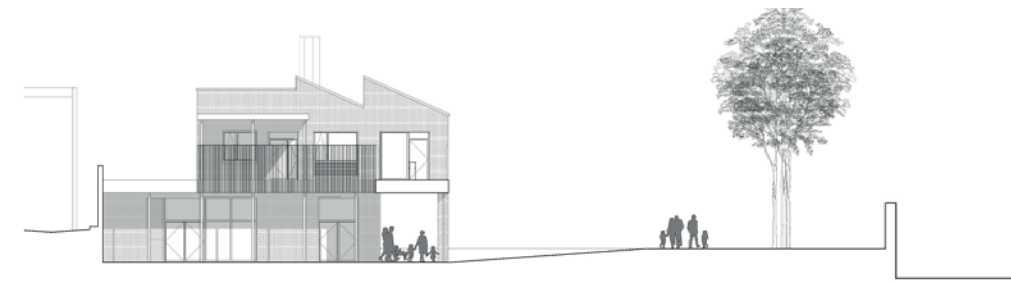


School bay study of Building 2 south facade

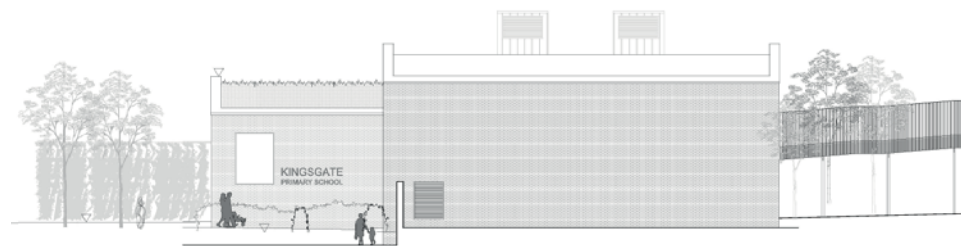
4.7 Appearance



School building 1 - west elevation



School building 2 - west elevation



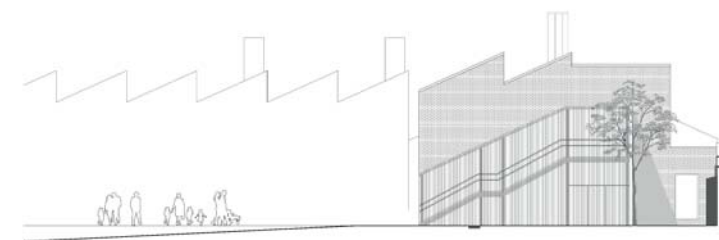
School building 1 - south elevation



School building 2 - south elevation



School building 1 - east elevation



School building 2 - east elevation

4.8 Access

Inclusive Design

Access in its broadest sense (walking, cycling, vehicular access and traffic and public transport) is described in section 3.8 of this report. The purpose of this section is to describe the approach to inclusive design of the school building.

The new school will provide high quality teaching and learning spaces that are accessible to all pupils, staff and visitors. The building is designed to ensure that entrances are legible and a simple layout and distribution of age groups providing way finding around the site is well managed. All doors will have level thresholds and walkways and ramps in and around the building have been designed to ensure that they are of a comfortable gradient with adequate landings to rest when required.

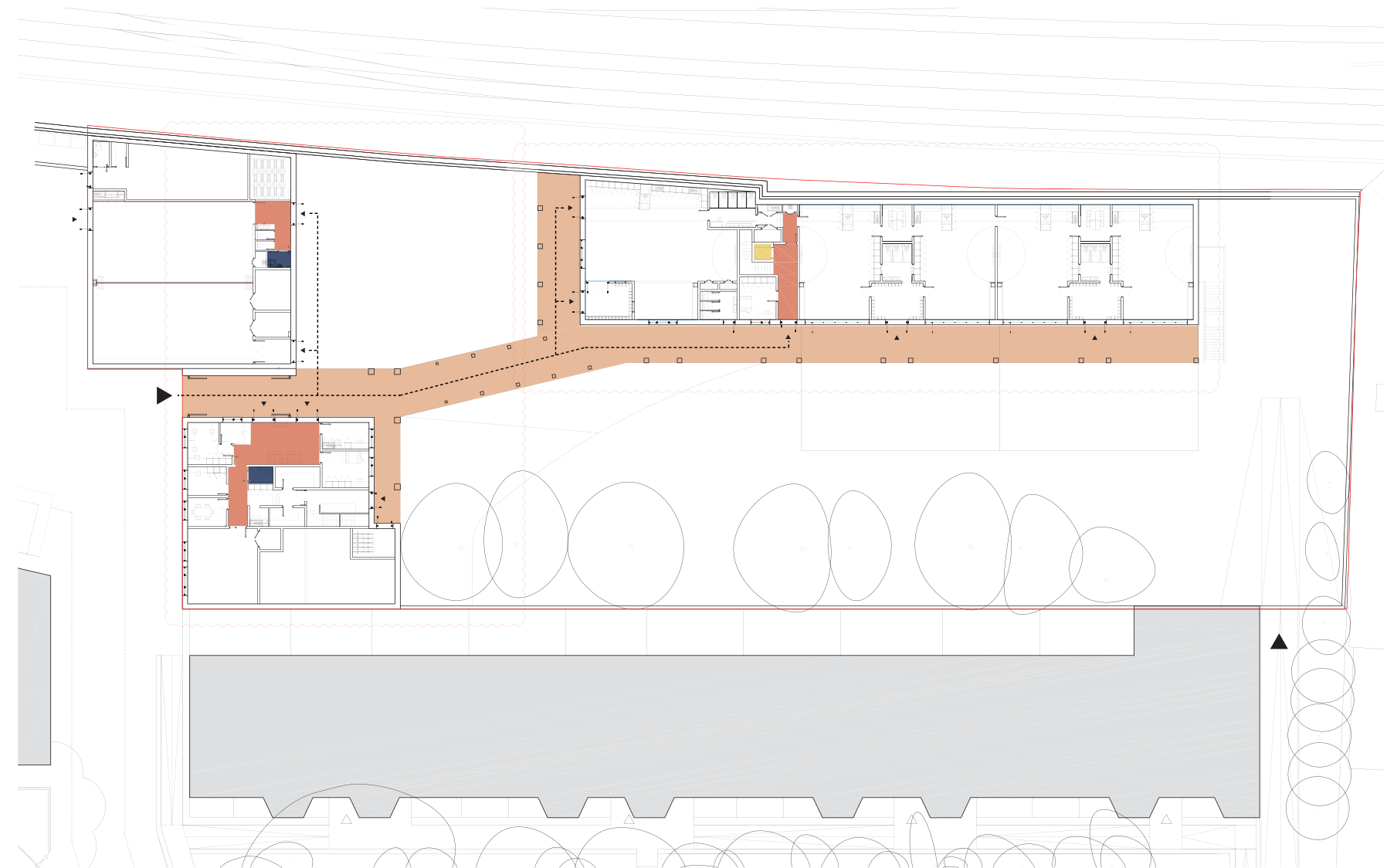
The building is arranged over two floors and a lift platform is installed providing access to the upper floor of the building. Ancillary spaces such as WCs, storage and staff offices are evenly distributed throughout the scheme to ensure that travel distances to these facilities are easily manageable by staff and pupils alike.

In order to maximise built internal spaces for teaching and learning, circulation space is typically provided through covered external walkways. These are designed with sufficient depth to ensure year-round weather protection and provide the additional benefit of covered outdoor learning and play space.

At first floor, a bridge links the Year 1 and Year 2 spaces, offering long views out to the railway line to the north and to the tree canopy to the south. This maximises the necessary circulation link as a space where learning and play are possible. Pupil safety is ensured through the provision of 1.8m high balustrades.

The young age of the pupils has been considered in the development of the design with age specific facilities provided. WCs are provided in half-year-group clusters with at least one cubicle in each cluster being designed to meet the needs of ambulant disabled users. A fully wheelchair accessible WC is provided in each block with travel distances not exceeding 40m. Separate accessible WC services are provided for visitors in the admin hub.

The location of office spaces in the front-of-house admin hub provides parents, carers and outside agencies with easy access to these facilities from the street entrance, whilst back-of-house staff offices are located within easy access of teachers and pupils in the main teaching blocks.



Access plan

- External covered circulation
- Internal circulation
- Lift
- Accessible WCs
- Primary level access
- Access point



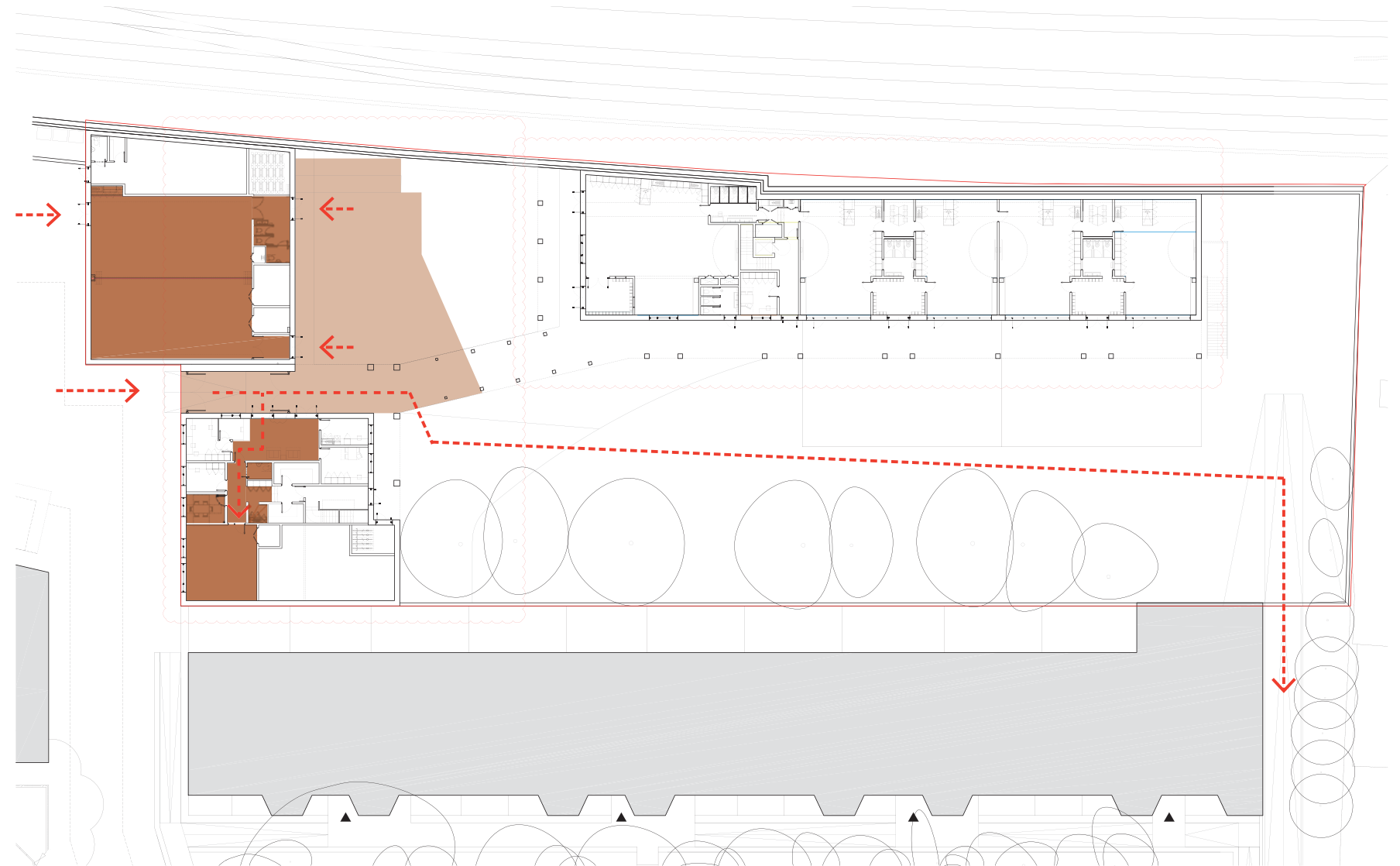
4.8 Access

Community and Out-of-Hours Access




The new school is designed to be at the heart of the new place in West Hampstead and has an active street presence accessed directly from the new public space. The layout of the building has been considered to maximise opportunities for community engagement with the gradient of public to 'private' spaces running from the open space of Maygrove Peace Park to the new square, then the community facilities of the school (the hall and adult training room) and finally to the playground and classrooms of the school in the most protected part of the site.

The school facilities have been designed to make access to community and shared use facilities as easy as possible. The adjacency of the hall and adult training room to the secure access lobby enables these spaces to be used either during the school day, separated from general school access, or during weekends and evenings with the rest of the school being easily secured. The hall and adult training room are both provided with an adjacent kitchenette for use by community groups. WC facilities are also closely located for visitor use.

Within the school a central courtyard provides a generous space for parents and carers to gather at morning drop-off and afternoon pick-up times, with areas of covered space for inclement weather. This courtyard also offers additional opportunities for community events such as summer fairs with good access to the hall and visitor WCs.



Shared access

-  Indoor community use spaces
-  Outdoor community use spaces
-  Community use primary access routes



