

4.6 Landscape

Area-by-Area Analysis: Area D, All Age Playground

The approach developed with the school is for an all age shared main playground for reception, Year 1 and Year 2, with a maximum diversity of play and learning environments. Reception children will have (gated) access to the main playground, as will nursery children at specific times.

The 240 KS1 children will be provided with an outdoor space of 2575m². The area includes habitat space as required in BB103, and on upper level outdoor play and learning area.

The outdoor space will be divided into two areas:

First, the ground floor level playground, 2365m², arranged for easy visual supervision by staff, and including a nature/science garden;

Second, a first floor level roofdeck space of 210m², providing a separate, adaptable learning and play resource.



Nature study



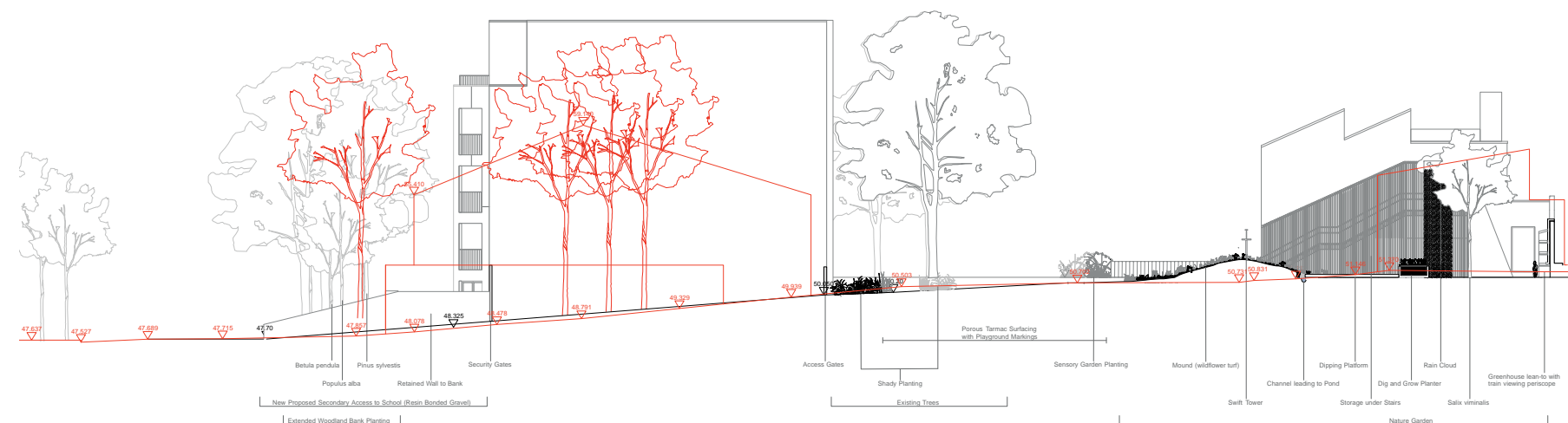
Pond



Lean-to Greenhouse



Bug Hotel



Section cut 7

4.6 Landscape

All Age Playground: Ground floor

The ground floor level playground will include:

- Covered space for all-weather play beneath the covered walkway/ colonnade and the proposed stage;
- Existing trees, retained for shade, shelter and habitat value;
- A mounded area comprising fill from site excavations where appropriate, both to provide playful topography and a sunny bank, and interplay of slopes and plateaus elsewhere creating a dynamic play environment;
- A habitat area comprising a pond, wetland and meadow (the pond will be unfenced but provided with a mesh screen just below the surface, liftable for pond dipping);
- A ballgames area with line markings and low level adaptable fencing;
- Playground markings for games including a railway themed running/ cycling track;
- Associated playful 'railwayana' including a covered station platform (stage), signals, clocks (analogue and digital) and buffers – a number of these features will include low level lighting to contribute to the lighting strategy;
- Play equipment including a climber platform within the mature trees;
- A quiet sitting area under the trees including log play;
- A science garden including interactive water play features, and wind measuring equipment (anemometers, weather vanes), and a periscope for observing trains over the Network Rail wall;
- Edible planting including herbs and orchard planting, with 'dig and grow' beds for cultivation by children, and a lean-to glasshouse against the railway wall;
- Elements of colourful and exotic planting for all-year interest, including a 'jungle trail' through bamboos and ferns;
- Sensory planting beds comprising plants for sight, smell, touch, taste and feel (a planting palette is included herewith).
- A porous surfacing palette comprising soft play surfaces and colour coated porous tarmac (a surfacing palette is included herewith);
- Playground storage for all playground areas, where possible built into structures e.g. a potting shed beneath the stairs at the eastern end of the school building, lean-to storage units against fences and walls, and storage space in voids beneath stages and platforms.



Soft sculpted play surface



Railwayana play markings



Playground markings



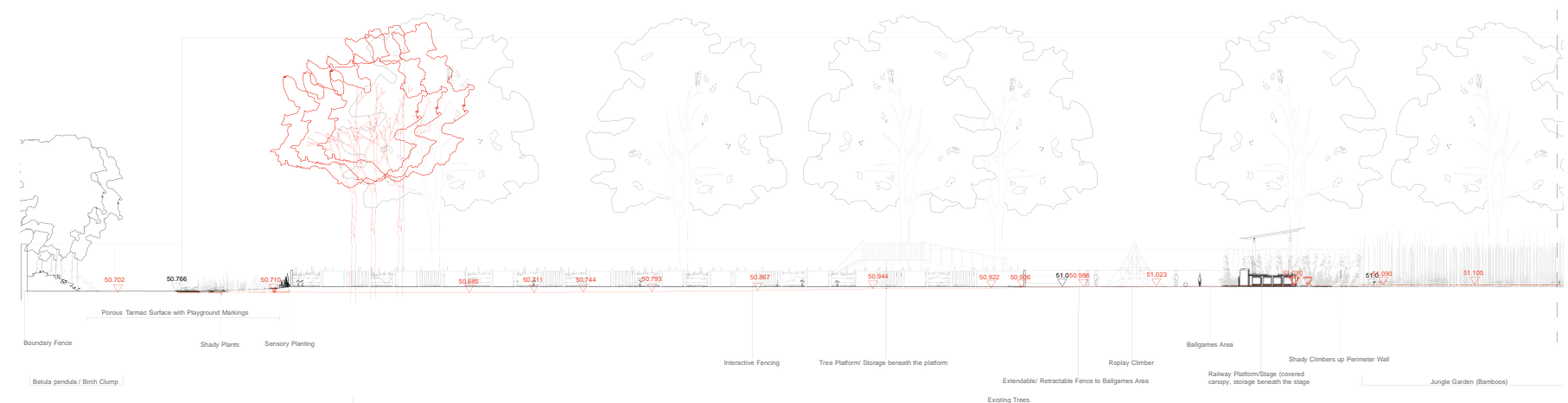
Stage platform



Tree platform



Log play



Section cut 10