

4.6 Landscape

Area-by-Area Analysis: Area E, Entrance from Maygrove Road

The service access from Maygrove Road will be fenced off from the main school playground with access via 2 pairs of gates, one at the edge of the playground and the outer security gates being at the front line of the mansion block on Maygrove Road.

This access will be used as the main drop off and pick up point for school children during the Phase 2 construction works, and will be surfaced with resin bonded gravel. Two operational parking spaces are to be provided for school use at the side of the access. The majority of the existing hedge planting will be retained, supplemented by new tree planting to complement the Maygrove Road woodland and form a green link to the school nature garden and the railway corridor.



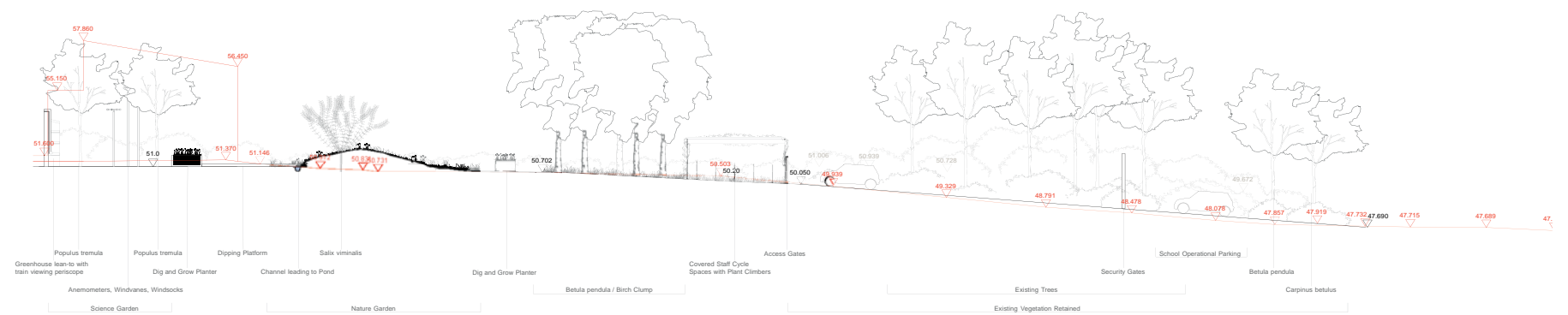
Permeable resin bond surface



Existing planting to retain



Structure with climbers



Section cut 8

— Proposed
— Existing

4.6 Landscape

Landscape Roof Level

The first floor level roofdeck space includes the first floor level above the nursery, and the bridge link above the colonnade access. Surfacing will be rubber wetpour soft play surface.

Footings built in to the surface will allow the erection of posts to support equipment, nets, awnings, hammocks etc. Roofdeck planters will be included. The bridge walkway between the two buildings will be the best vantage point to watch the trains go by. Water from the roof level will be diverted via a gargoyle type feature to the water play facility in the nursery playground below. The roofdeck may also act as an extension to the school's science garden including weather reading/measuring equipment such as anemometers, flags and weathercocks.



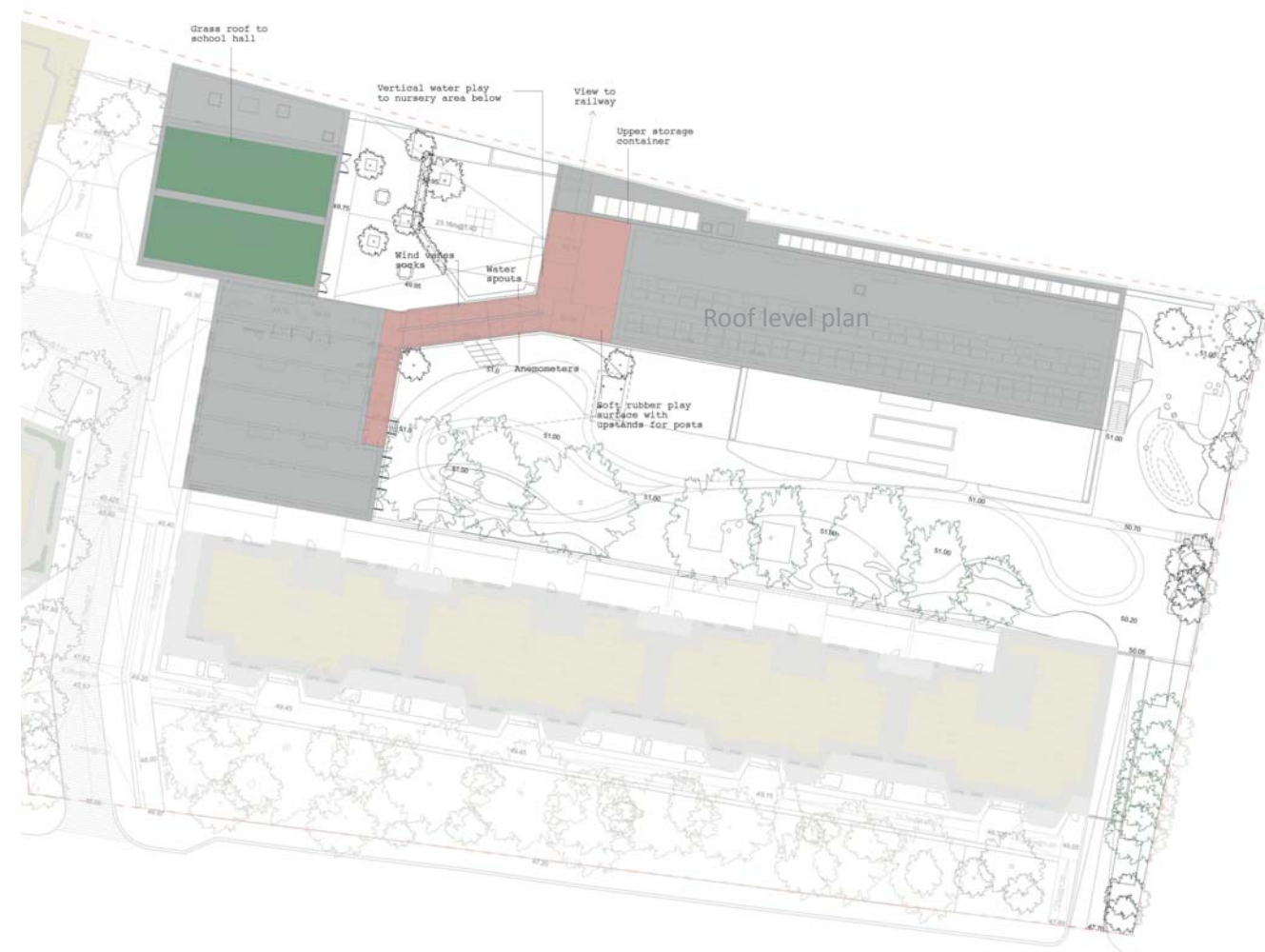
Roofdeck planters



Roofdeck area



Wind and Weather Reading



Roof level plan