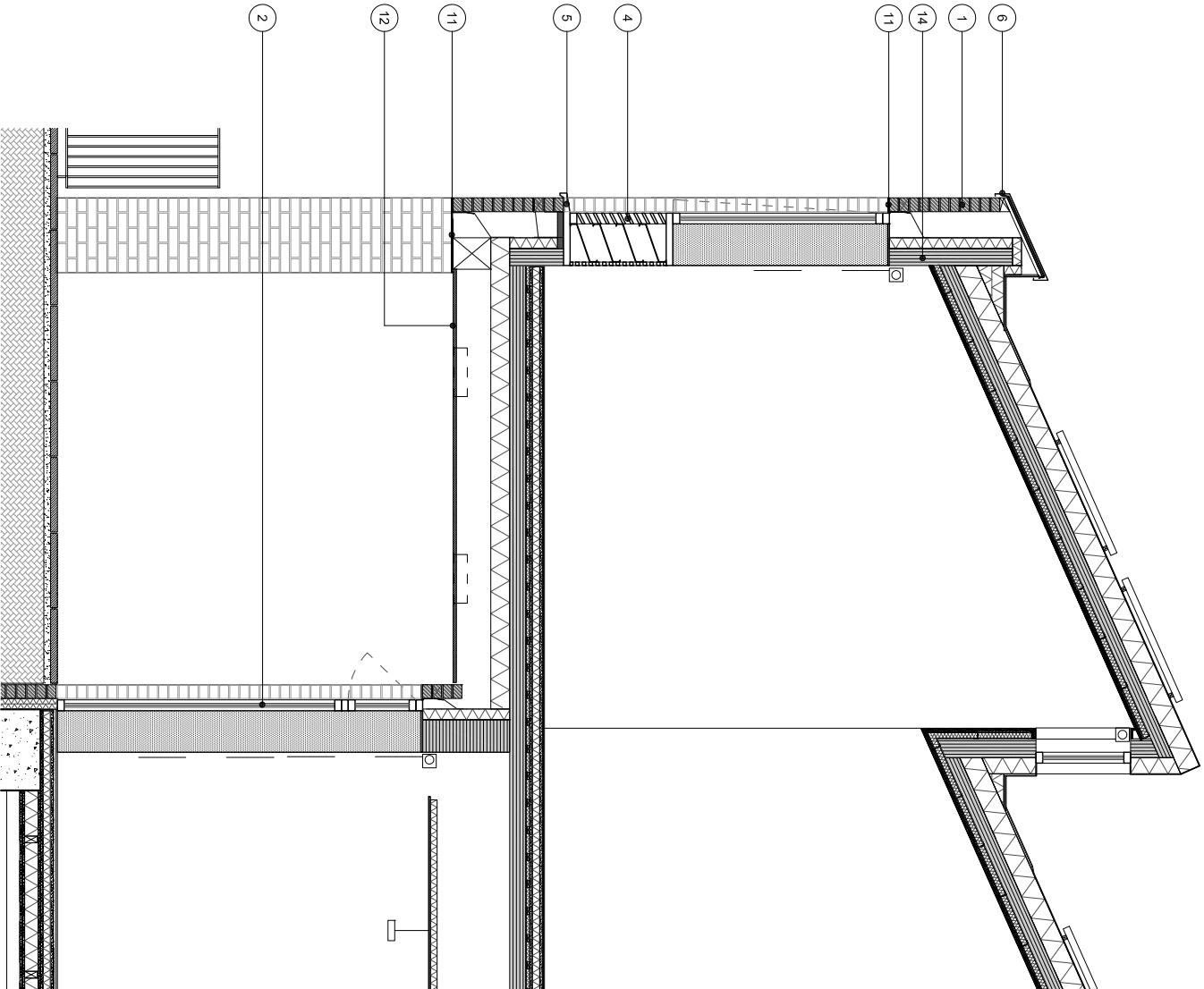


School Building 02 South Elevation

Section A-A



Rev Details

Drawn Date

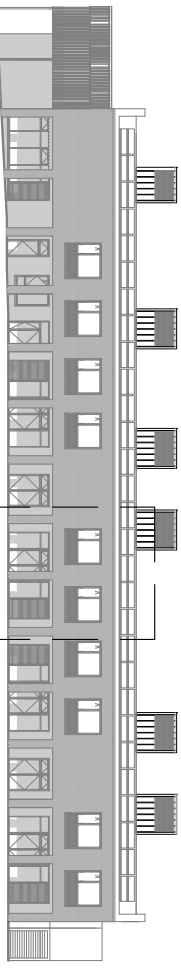
Do not scale from this drawing. Verify all dimensions on site. Drawing should be read in conjunction with information from all other design consultants and contractors. All drawings in digital format are for reference only, paper copies are available on request.

FOR PLANNING

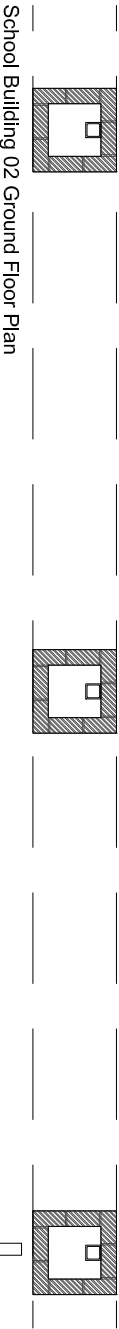
© Maccreanor Lavington Ltd.

MATERIALS KEY

1. Solid facing flysique brick by "Traditional Brick & Stone" or similar approved. To be laid in stretcher bond with natural light grey colour mortar joint, colour ref: "CP1 Eurobrick, M3ANK100 or similar approved
2. Composite aluminium windows and doors, polyester powder coated colour ref: matt, RAL 7006
3. Steel louvered doors to plant rooms, polyester powder coated colour ref: matt, RAL 7006
4. Steel integrated louvered ventilation panel, polyester powder coated finish, matt, RAL 7006
5. Aluminium sill, polyester powder coated colour ref: matt, RAL 7006
6. Aluminium coping, polyester powder coated colour ref: matt, RAL 7006
7. Steel gates, decorative design to be confirmed by architects, polyester powder coated colour ref: metallic, Champagne
8. Steel canopy posts and walkway balustrades, polyester powder coated colour ref: metallic, Champagne
9. Steel down pipe, polyester powder coated colour ref: matt, RAL 7006
10. School Signage, polyester powder coated steel colour ref: metallic, Champagne
11. Aluminium soffit plate, polyester powder coated, colour ref: matt, RAL 7006
12. Timber slatted soffit with integrated linear lighting
13. Saw-tooth roof light
14. Cross Laminated Timber (CLT) structure
15. Roof vents for passive stack ventilation
16. Kitchen extract plant
17. Roof access hatch
18. Green roof
19. Soft pour play surface



School Building 02 South Elevation Key



School Building 02 Ground Floor Plan

Application 01
Expansion of Kingsgate Primary School
& Redevelopment of Liddell Road Phase 01

Client: London Borough of Camden

Title: School Bay Study

Scale: 1:50 @ A3

Date: 01-12-2014

Drawn: HD

MLUK / 403 / P1 / 522

MaccreanorLavington
3rd Floor
19-21 Nile Street
London W1T 7LL
t +44(0)207 336 73 53
f +44(0)207 336 76 55
e uk@mlarchitects.com

Original printed at A3