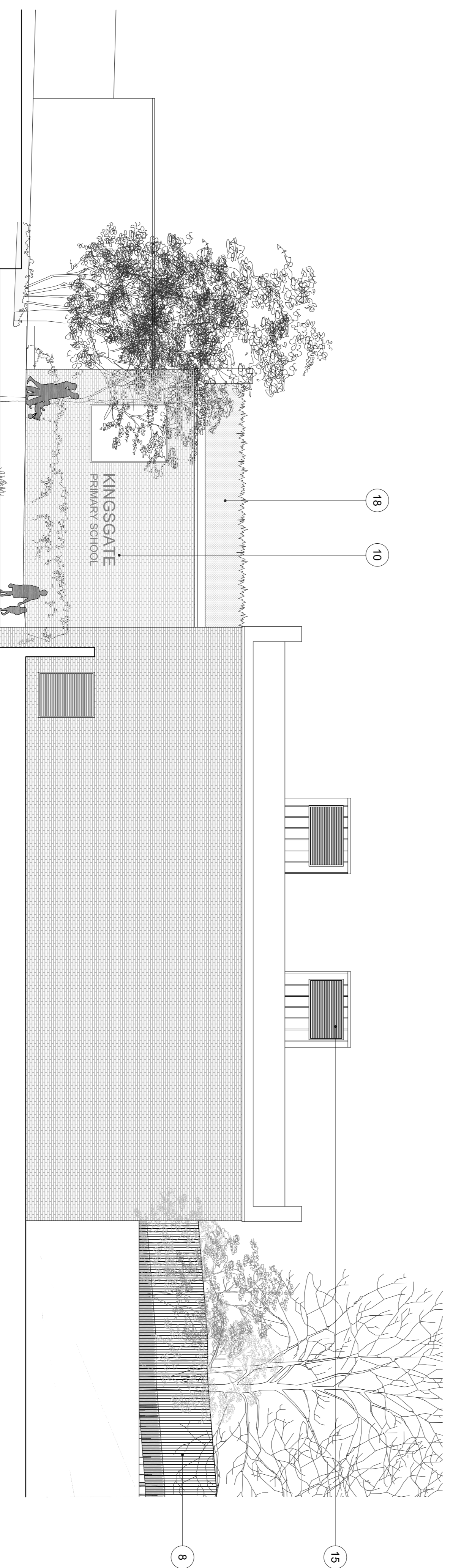
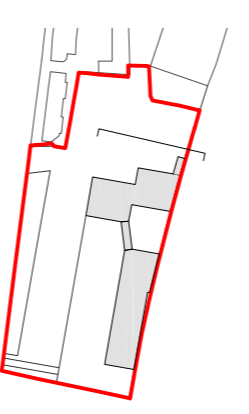
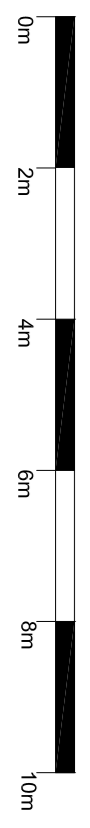
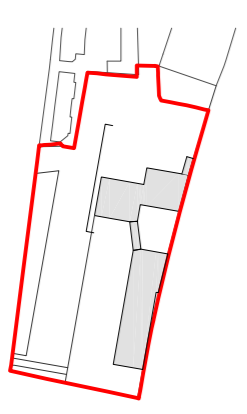


SCHOOL BUILDING 01 WEST ELEVATION



SCHOOL BUILDING 01 SOUTH ELEVATION



Do not scale from this drawing. Verify all dimensions on site. Drawing should be read in conjunction with information from all other design consultants and contractors. All drawings in digital format are for reference only, paper copies are available on request.

## FOR PLANNING

© Maccreanor Lavington Ltd.

### MATERIALS KEY

1. Solid facing Mystique brick by "Traditional Brick & Stone", or similar approved. To be laid in stretcher bond with natural light grey colour mortar joint, colour ref: "CP1 Euromix, M3ANK100 or similar approved
2. Composite aluminium windows and doors, polyester powder coated colour ref: matt, RAL 7006
3. Steel lowered doors to plant rooms, polyester powder coated colour ref: matt, RAL 7006
4. Steel integrated lowered ventilation panel, polyester powder coated finish, matt, RAL 7006
5. Aluminium sill, polyester powder coated colour ref: matt, RAL 7006
6. Aluminium coping, polyester powder coated colour ref: matt, RAL 7006
7. Steel gates, decorative design to be confirmed by architects, polyester powder coated colour ref: metallic, Champagne
8. Steel canopy posts and walkway balustrades, polyester powder coated colour ref: metallic, Champagne
9. Steel down pipe, polyester powder coated steel, colour ref: metallic, Champagne
10. School Signage, polyester powder coated steel, colour ref: metallic, Champagne
11. Aluminium soffit plate, polyester powder coated, colour ref: matt, RAL 7006
12. Timber slatted soffit with integrated linear lighting
13. Saw-tooth roof light
14. Cross Laminated Timber (CLT) structure
15. Roof vents for passive stack ventilation
16. Kitchen extract plant
17. Roof access hatch
18. Green roof
19. Soft pour play surface

For proposed landscape information refer to JCLA landscape drawings submitted as part of this planning application

Rev	Details	Dwn	Date

### Application 01 Expansion of Kingsgate Primary School & Redevelopment of Liddell Road Phase 01

Client: London Borough of Camden  
 Title: School Building 01  
 West and South Elevations  
 Scale: 1:100 @ A1 / 1:200 @ A3  
 Date: 01-12-2014  
 Drawn: JY

### MLA / 403 / P1 / 320

**MaccreanorLavington**  
 3rd Floor  
 19-21 Inns Street  
 London N1 7LL  
 t +44(0)207 336 73 53  
 f +44(0)207 336 76 55  
 e uk@mlsarchitects.com