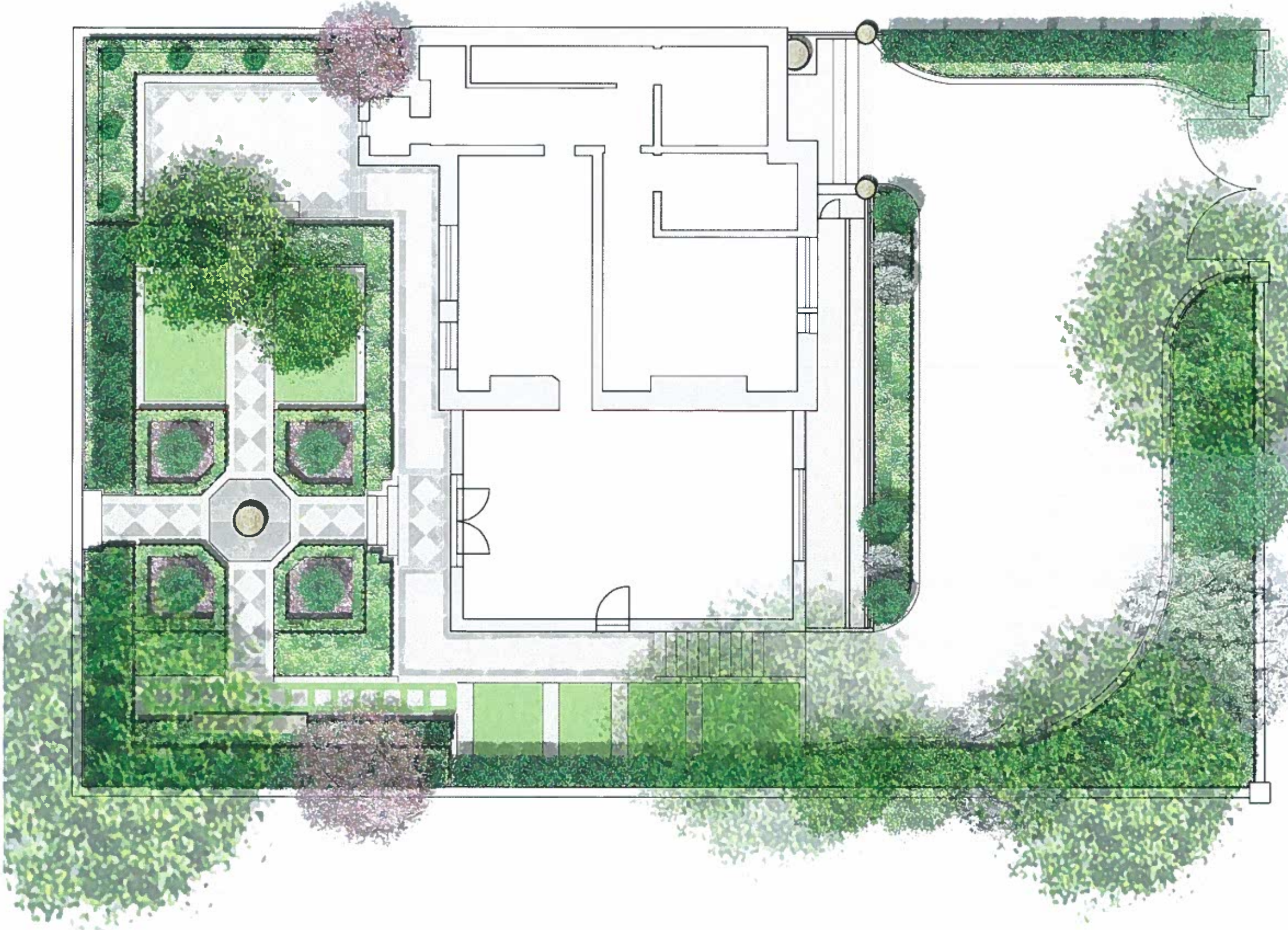




**11 PRINCE ALBERT ROAD, LONDON NW1
LANDSCAPE PROPOSALS
AMENDED PLANNING SCHEME
CS075826-L002 Rev D
NOVEMBER 2014**



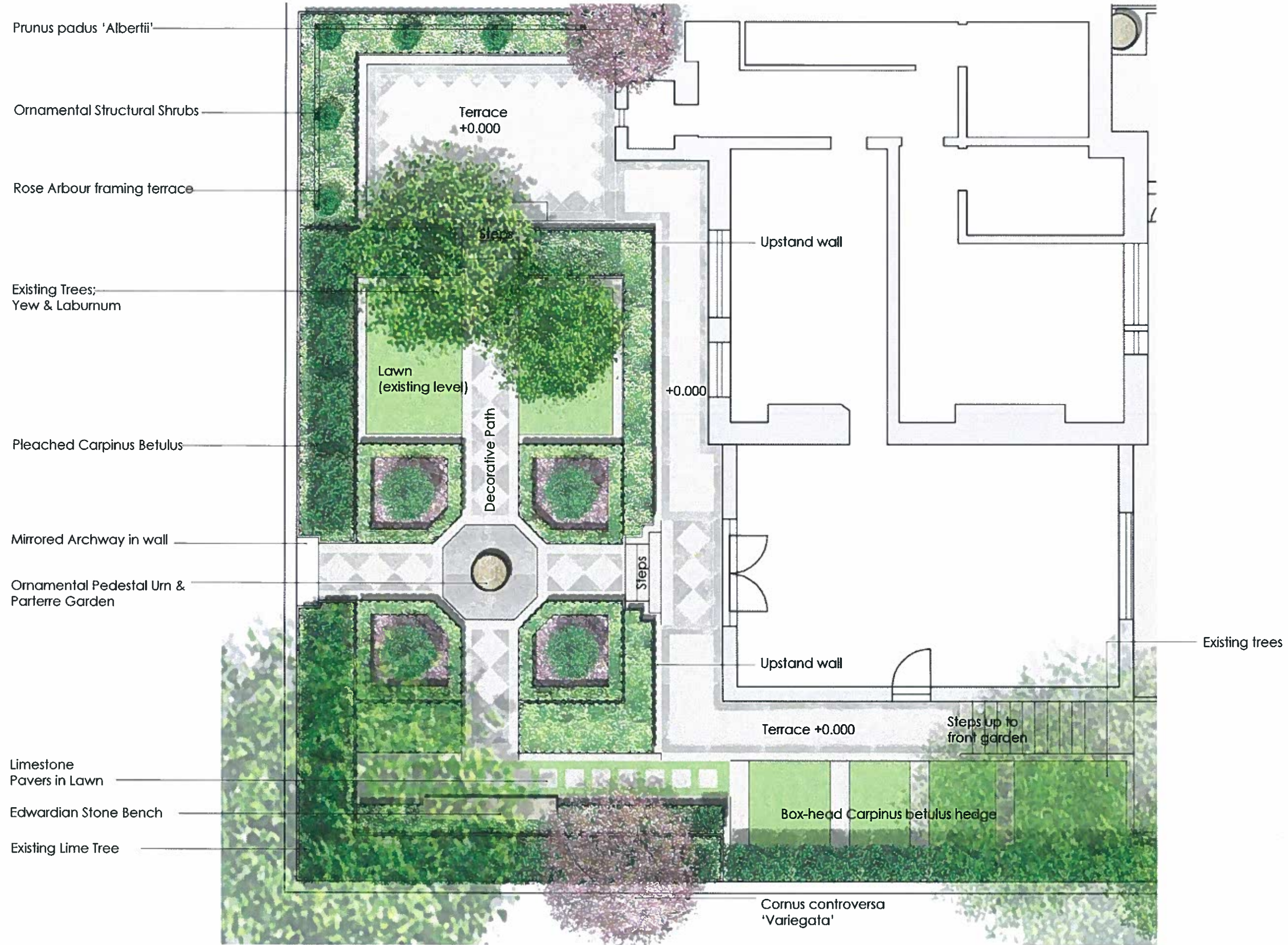
Legend

-  Existing Trees
-  Ornamental Trees & Large Shrubs
-  Pleached Trees/Hedging
-  Box Head Trees
-  Shrubs & Perennials
-  Lawn with Limestone Trim
-  Upstand wall
-  Limestone Steps
-  600x600x50 Limestone Pavers (staggered) with Limestone Set Trim
-  2 Tone Decorative Limestone Paving
-  Pot/Urn/Sculptural Element

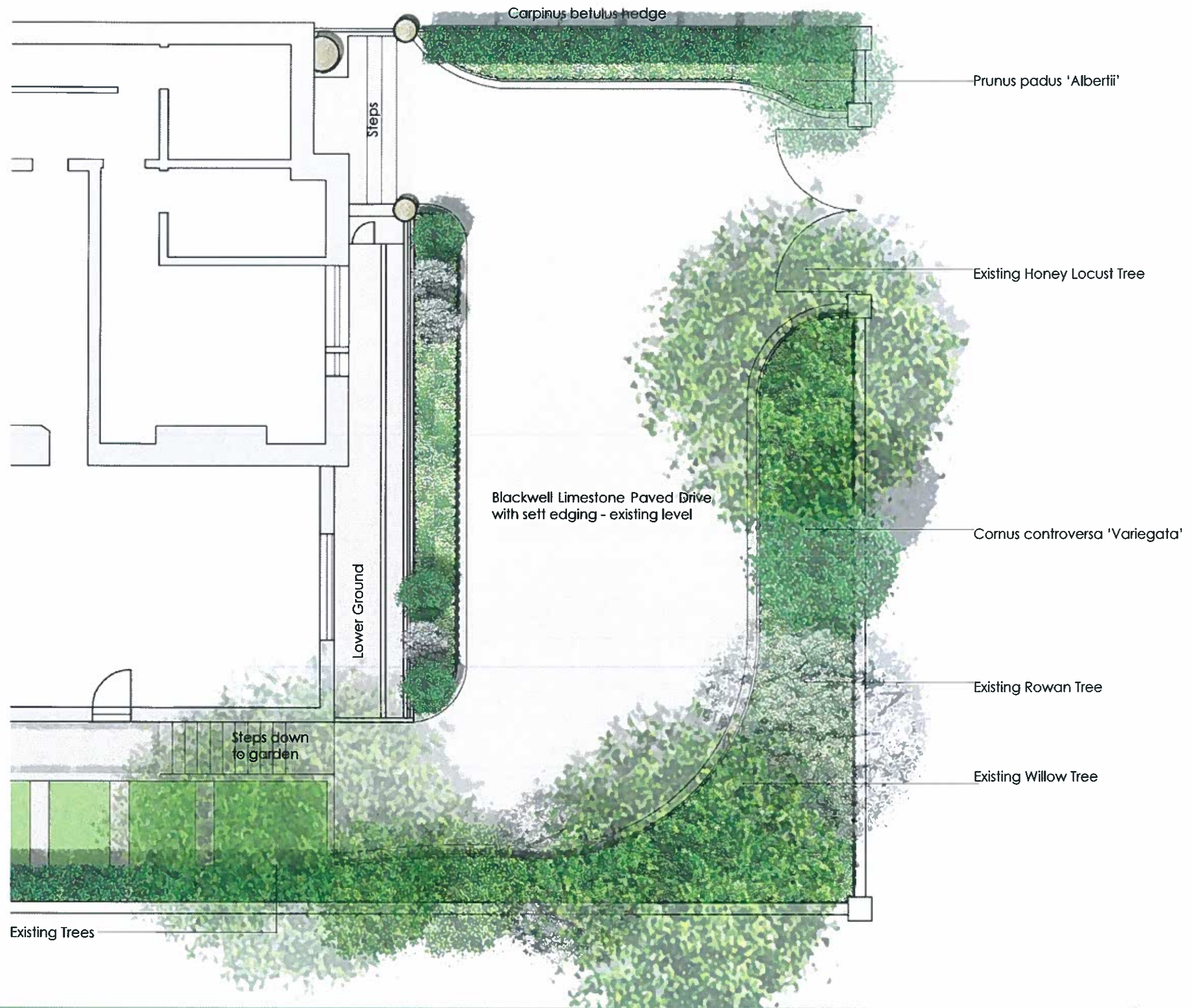


Scale 1:100 @ A3





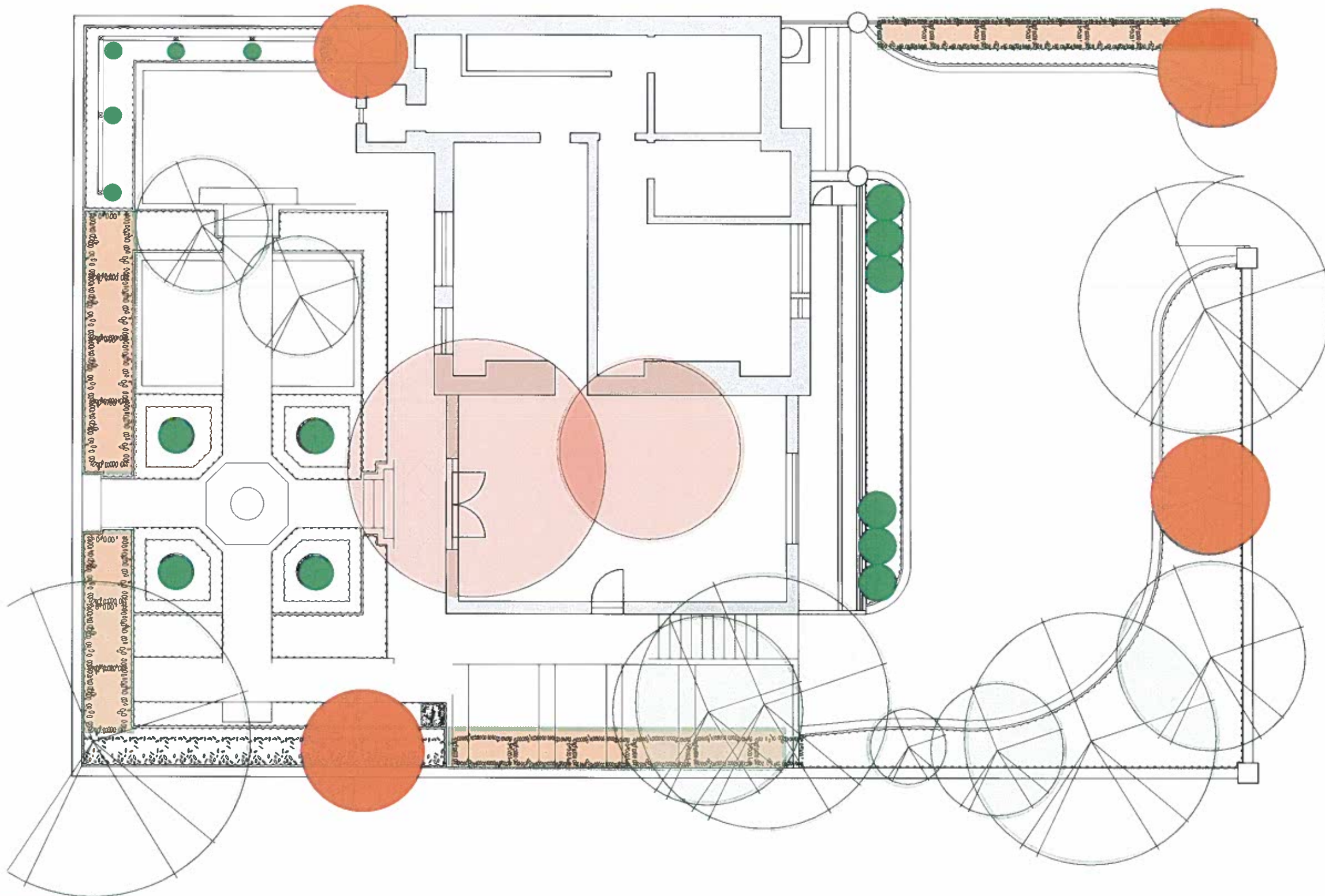
Not to scale



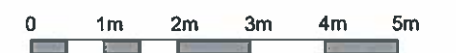
© This drawing is the copyright of Capita. All Dimensions are to be checked and scaled. Capita accept no liability for any omission, loss or damage of whatsoever nature and however arising from any variation made to this drawing or in the execution of the work, to which it relates which has not been referred to them and their approval obtained.
 Reproduced from (insert scale of map, for example 1:10 000 scale) by permission of Ordnance Survey on behalf of The Controller of Her Majesty's Stationery Office, © Crown Copyright (insert the year of publication of the Ordnance Survey map). All rights reserved. License number 10002895.

Legend

-  Existing trees to be retained
-  Existing trees to be removed
-  Proposed trees
-  Proposed Pleached Trees/Hedging
-  Proposed Structure Shrubs



Scale 1:100 @ A3



Paving



PRODUCT Hardscape Charemenge Honed Limestone (or similar approved) - 30mm depth, sizes vary

LOCATION Steps, Lawn Edge & Rear Garden Paving



PRODUCT Hardscape Gala Blue Grey Honed Limestone (or similar approved) - 30mm depth, sizes vary

LOCATION Detailing in Rear Garden Paving and on Step Landings



PRODUCT Hardscape Blackwell Buff Sawn Limestone (or similar approved)- 600x600x50mm Pavers & 250x150x50mm Setts

LOCATION Front Driveway and Edging

Coping



PRODUCT Hardscape Cenia Enica Flamed Limestone (or similar approved)- 200 x50mm x varying lengths

LOCATION Coping to upstand walls

Garden Elements



PRODUCT Edwardian Style Stone Pedestal Urn - Product to be determined

LOCATION Parterre Garden



PRODUCT Edwardian Style Stone Bench - Product to be determined

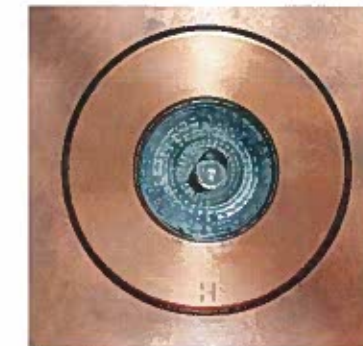
LOCATION Rear Garden

Lighting



PRODUCT Hunza Copper Wall Light - MEC or similar approved supplier

LOCATION Upstand walls and to light steps



PRODUCT Hunza Copper Flush Floor Light - MEC of similar approved supplier

LOCATION Front Driveway and way faring for rear garden paths



PRODUCT Hunza Copper Modex Spike Uplight - MEC or similar approved supplier

LOCATION To Feature Trees and Shrubs

Trees & Hedging



Prunus padus 'Albertii'



Magnolia x soulangea



Cornus controversa 'Variegata'



Carpinus betulus (pleached)



Camellia japonica 'Nobelissima'



Buxus sempervirens

Shrubs/Climbers



Buxus sempervirens (pyramid)



Rosa 'Kent'



Hydrangea paniculata 'Ville
Fraise'



Azalea indica 'Knut Alba'



Rosa 'The Generous Gardener'



Clematis armandii

Perennials



Paeonia 'Duchesse de Nemours'



Astilbe 'Bridal Veil'



Heuchera villosa 'Palate Purple'



Helleborus x hybridus
'Double Ellen White'



Hosta 'White Feather'



Liriope muscari 'Monroe White'

Groundcover/Bulbs



Athyrium niponicum var. *pictum*



Ajuga reptans 'Autropurpurea'



Bergenia 'Baby Doll'



Tiarella 'Spring Symphony'

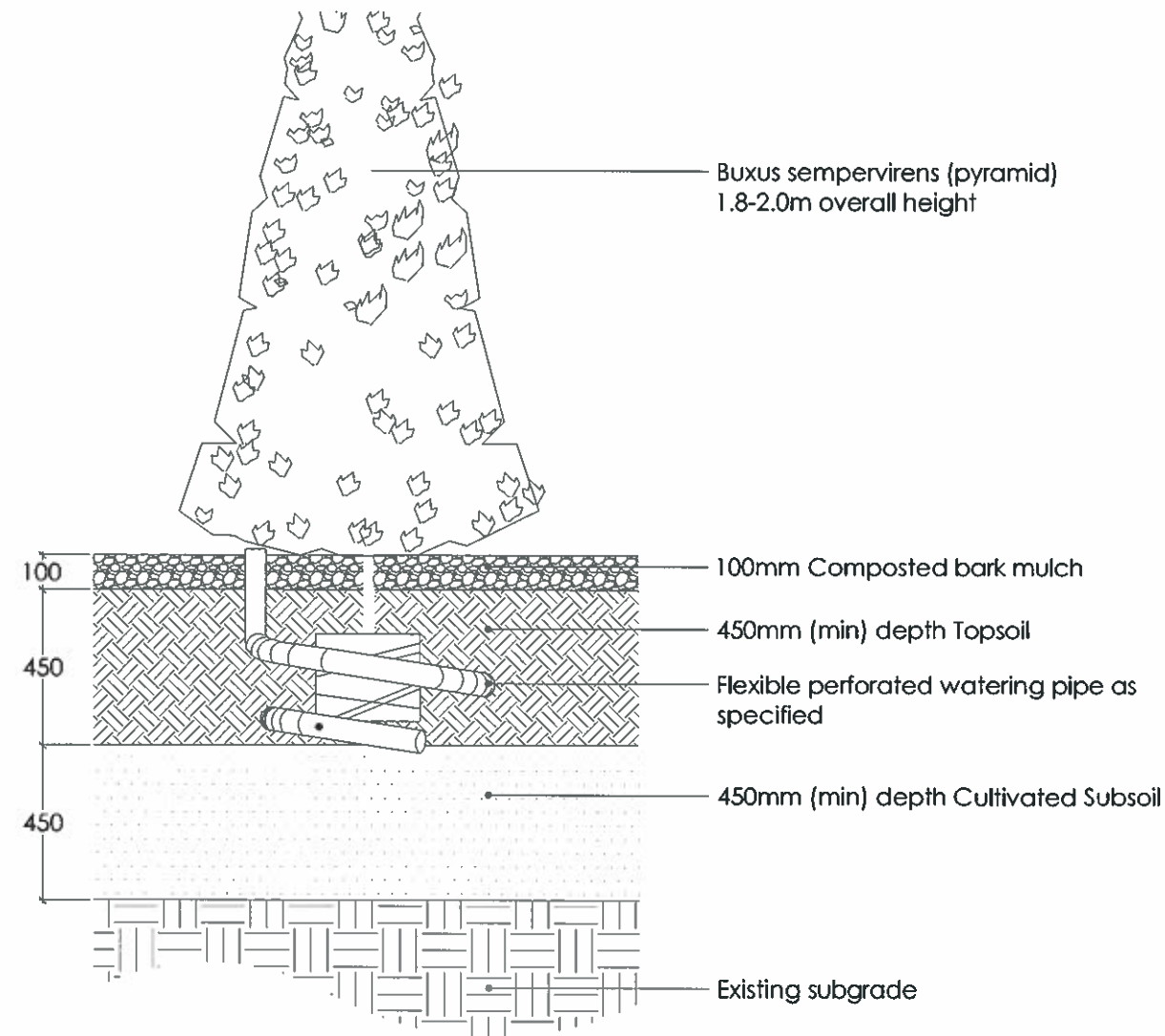


Allium 'Mt Everest'



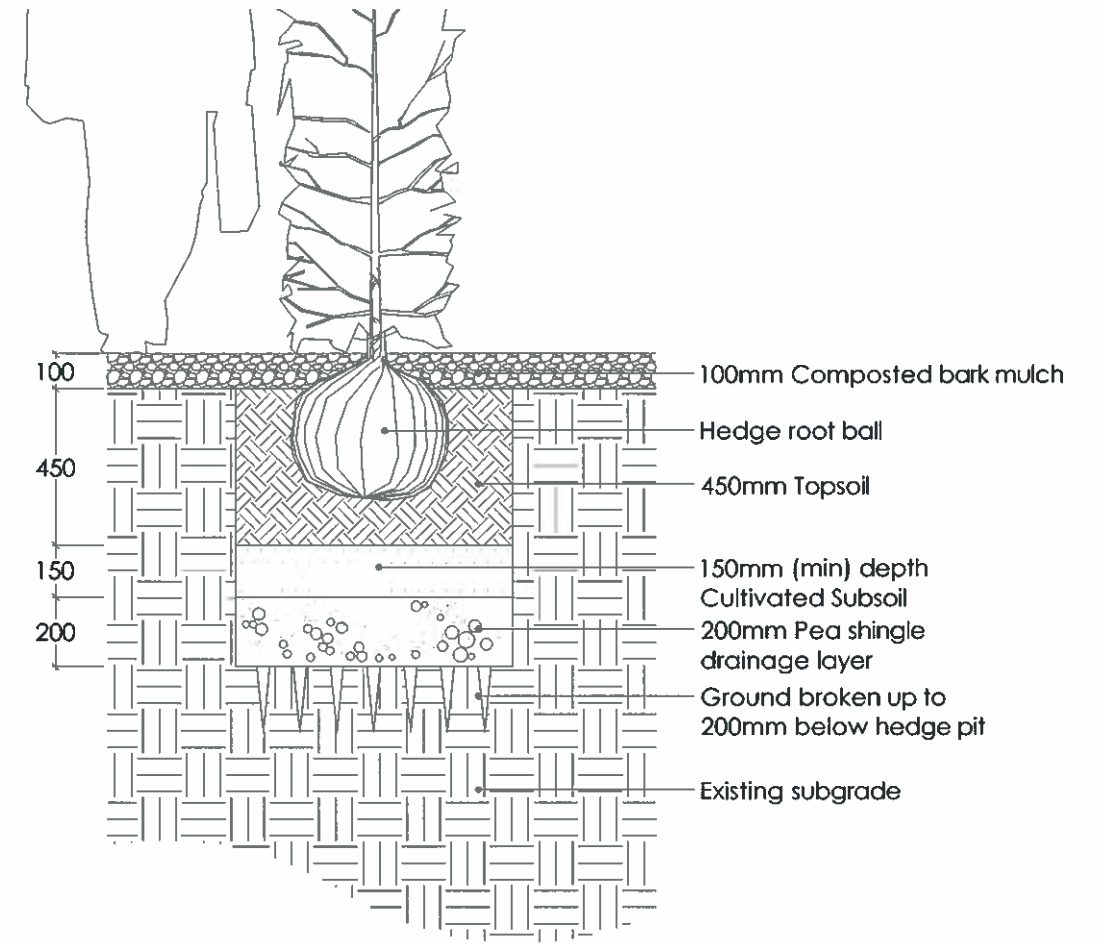
Tulipa 'Angelique'

PLANT SIZES	Pot Size (ltr)	Size (min) Height / Spread	Description
TREES (Semi-mature 20-25cm girth)	Root Ball	4.5-6.0m	1.8m clear stem min.
TREES (Semi-mature Pleached)	Root Ball	3.0-3.5m	1.8m clear stem min. Head to be circa 1-1.5m square - Sizes to be matched for all trees
HEDGING AND SPECIMENS	10ltr	Varies	Bushy
SHRUBS	3ltr	30-40cm	Bushy
HERBACEOUS & GROUNDCOVERS	3ltr	n/a	full pots
BULBS	n/a	topsize	Plant in clumps



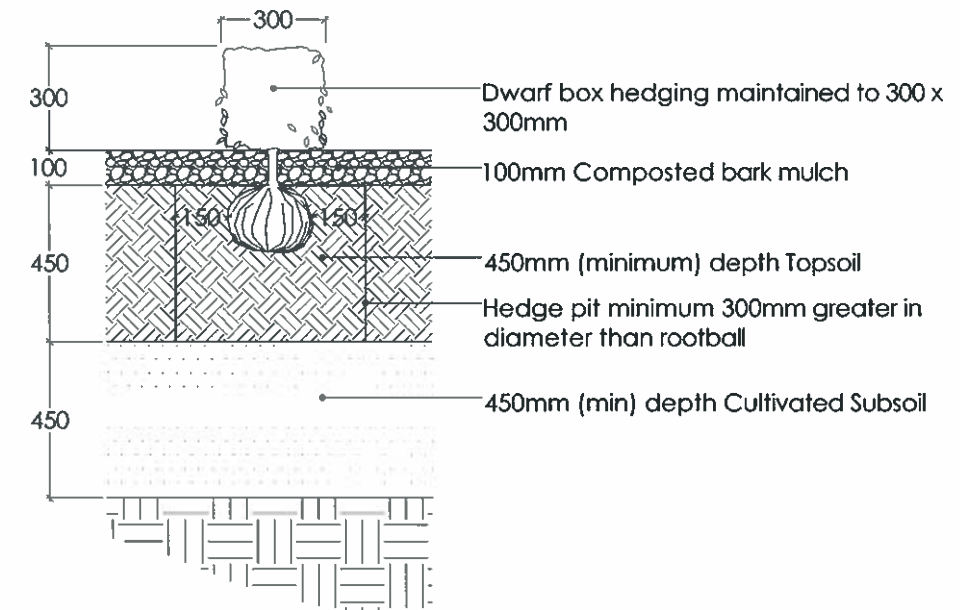
1.0 Specimen Shrub Planting Detail

Section 1:20



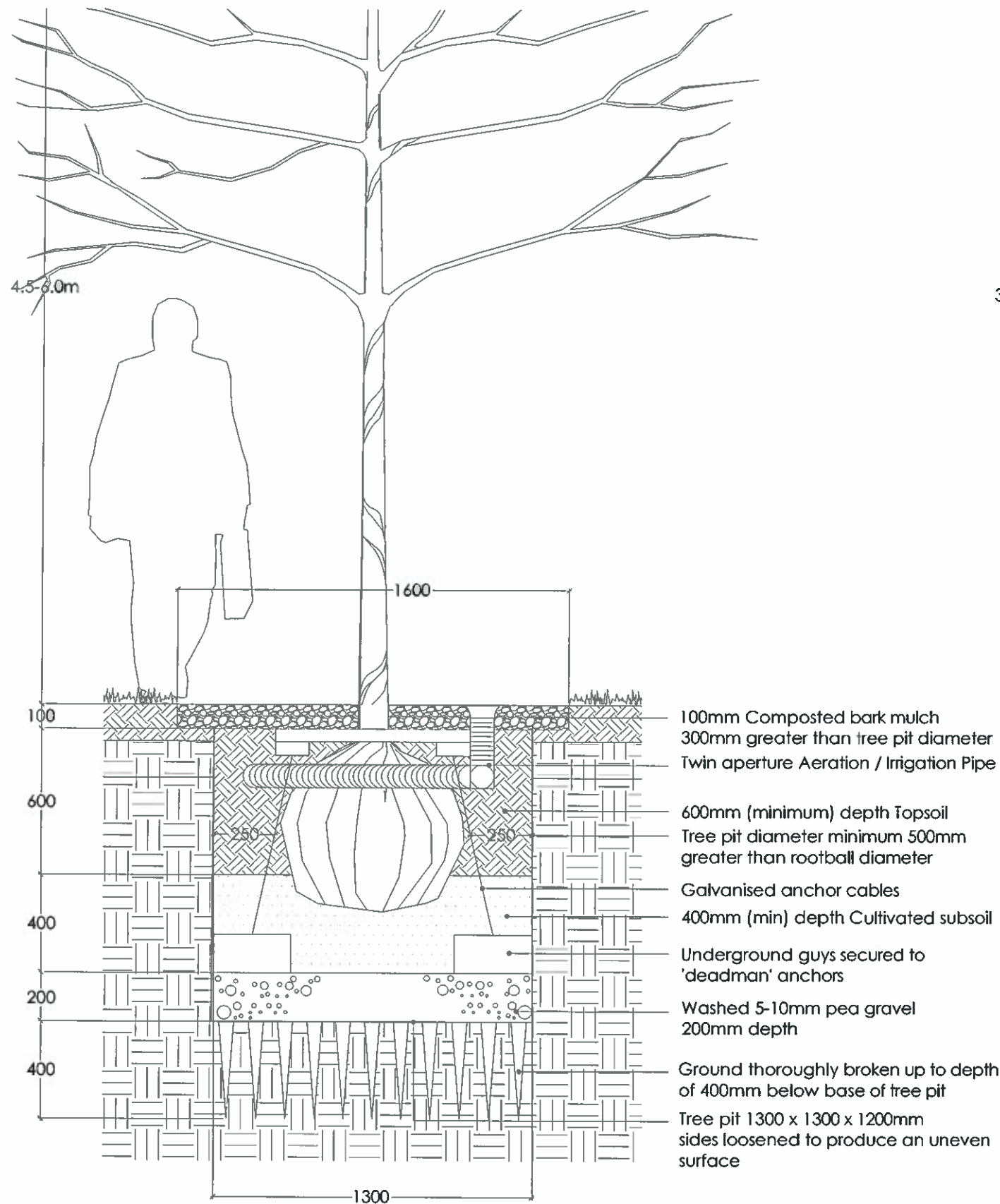
2.0 Typical Instant Hedge Planting Detail

Section 1:20

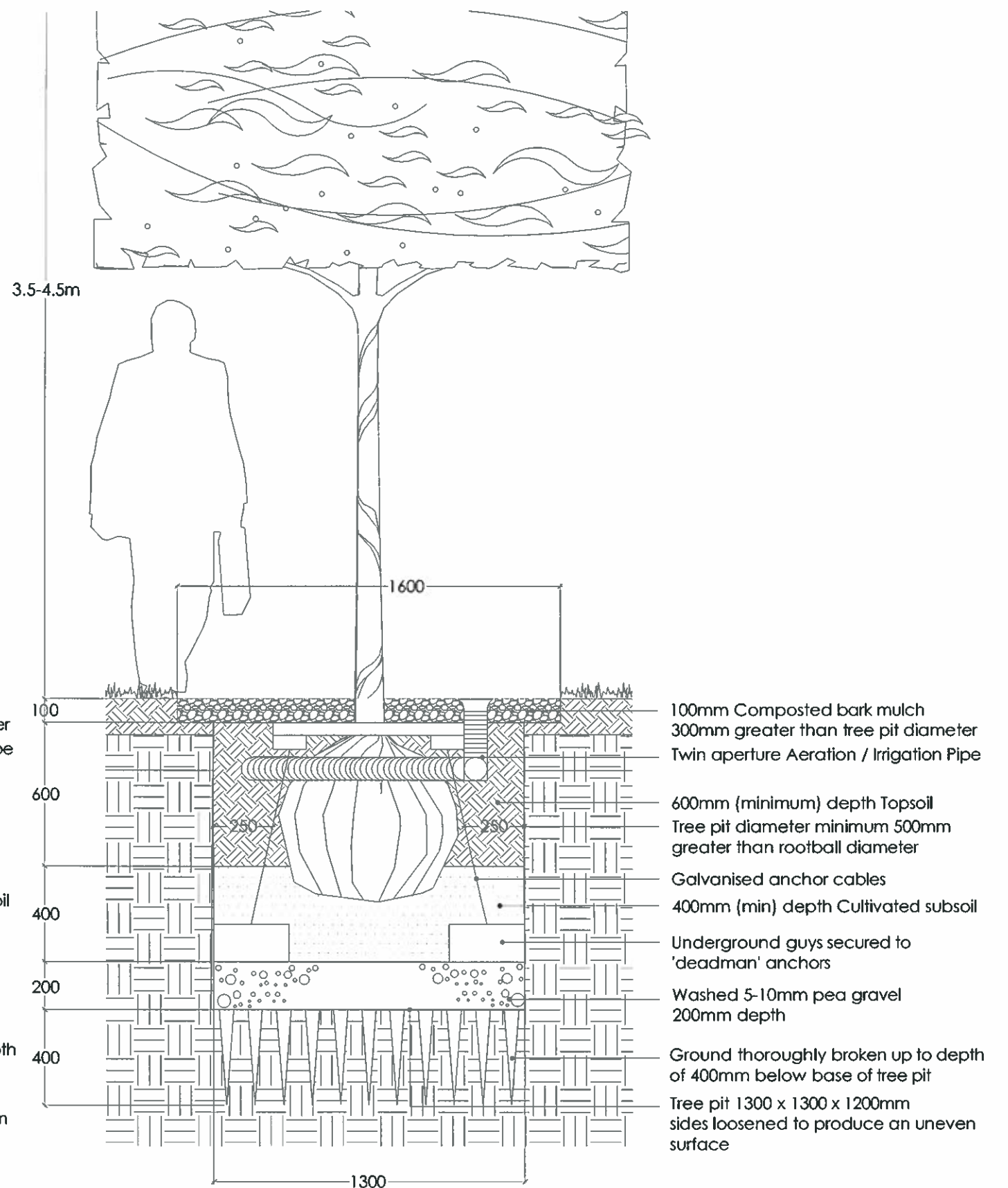


3.0 Typical Dwarf Hedge Planting

Section 1:20



4.0 Typical Semi Mature (20-25cm Girth) Tree Planting
Section 1:20



5.0 Pleached Semi-Mature (20-25cm Girth) Tree Planting
Section 1:20