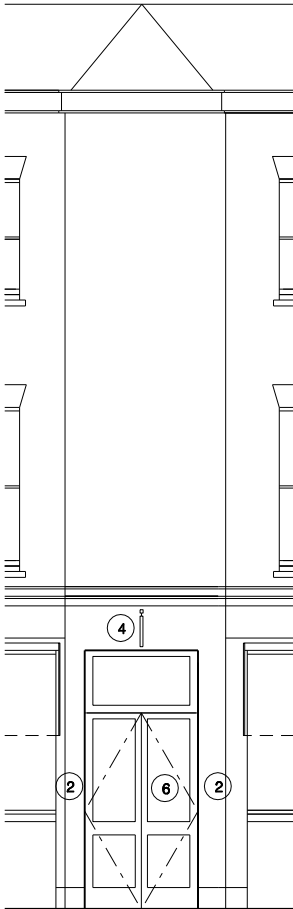


- 1 new glazed brick panels to window recesses below existing windows
- 2 repaint facade throughout at ground floor
- 3 new pull out awnings above each window with graphics – see e_002
- 4 new metal hanging sign above door 500mm X 600mm approx – see e_002
- 5 omitted
- 6 replace existing glazed venting fanlight with new matching double-glazed timber-framed venting fanlight, retain and refurbish existing timber double door; add power operation for disabled access
- 7 replace existing glazed operable fanlight vent with double glazed timber framed vent and replace existing timber double door with matching timber door-and-a-hall, to comply with building control request
- 8 new graphics to reinstated fascia above windows and new lighting above entablature – see e_002
- 9 replace existing non-original, single glazing with new, frameless, fixed double-glazed panels to match existing – with internal window graphics



proposed elevation



proposed corner elevation



proposed elevation

Rev	Notes	Date
–	issued for planning	08.09.14
A	issued for planning	12.11.14
B	issued for planning	09.12.14

- all dimensions are to be checked on site and any discrepancies reported to the architect
- architect to be informed of any additional information required
- do not scale this drawing
PRELIMINARY



WORKS ARCHITECTURE					16 UPPER MONTAGU STREET LONDON W1H 2AW 020 7224 8750 WWW.WORKSARCHITECTURE.COM
Project: goodge place					
Title: proposed elevations					
Date: 09.12.14	Drawn: js	Scale: 1:100@a3 1:50@a1	Drawing Number: e 101	Revision: B	