

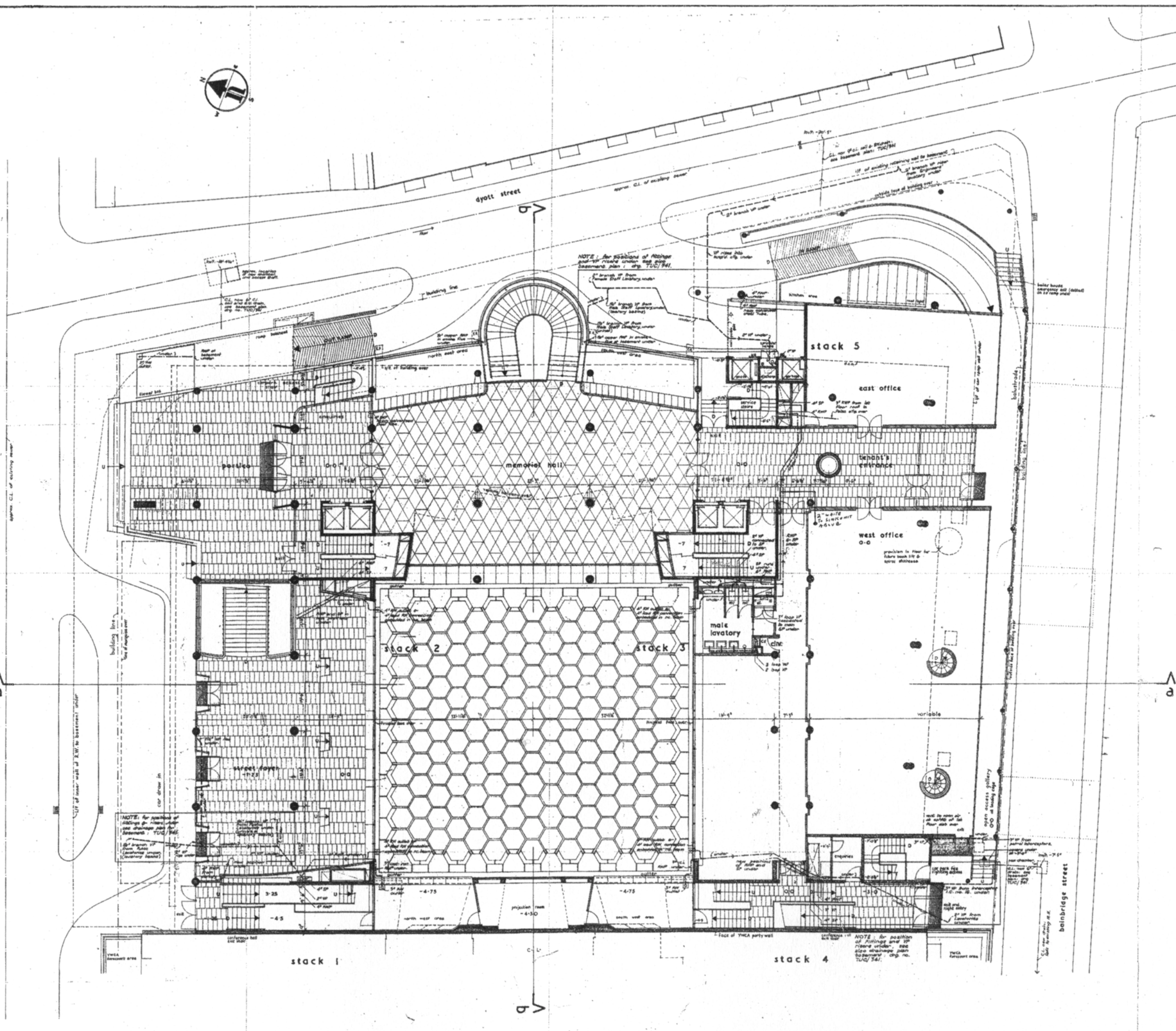
## 6.0 Appendix

### Historic Plans:

- 1957 Ground Floor Plan
- 1957 6th Floor and Roof Plans

### Guidelines for management drawings:

- Ground Floor Plan Analysis
- Roof Plan Analysis
- Section AA Analysis
- Section BB Analysis
- Section CC Analysis
- Ground Floor Plan Guidelines
- 6th Floor Plan Guidelines
- Roof Plan Guidelines



reference drgs.  
This drawing must be read in conjunction with the following relevant drawings:  
• Drainage - diagrammatic layouts TUC/340  
• Drainage - floor plans TUC/341  
• 1st floor to 6th floor & penthouses TUC/345-348  
• Sub-basement TUC/349  
• Drainage - section 3-3 TUC/350

notes  
• For key to symbols and abbreviations used on this drawing see drg. TUC/341  
• All pipe sizes given refer to minimum internal diameter  
• All levels given are related to Architect's datum

materials

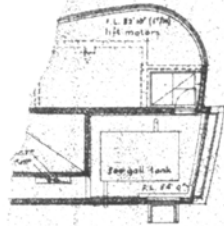
reinforced concrete	
brickwork	
block	

revisions  
No. 1: 9.5.55 • east elevation Oct 57, line amended to 4'-6"  
• STACK 5: route of 3" vent from floor near staircase  
• Street side amended: connection to 4'-6" main vent  
made in ground floor false ceiling.  
No. 2: 4.12.57 • Brick and block walls etc. amended  
• windows 1st floor (Baubridge) lavatory added  
• Cant. 1st floor for outside representation

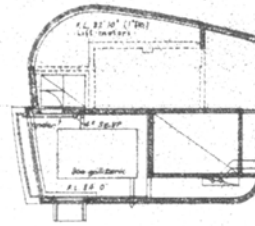
**TUC MEMORIAL BUILDING**  
GREAT RUSSELL STREET - HOLBORN

scale	description	drg. no.
1/8" = 1'0"	drainage	TUC/342
GROUND FLOOR		342
date	1.3.55	2
DAVID DE R. ABERDEEN		19 Southampton Row London W.C1

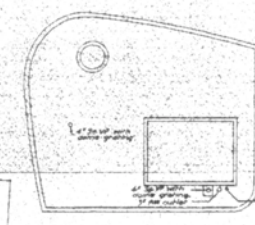




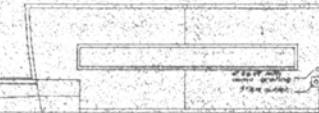
penthouse upper level  
machinery & storage tanks etc.



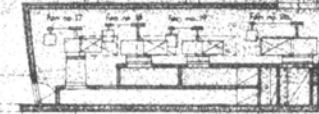
penthouse upper level  
machinery & storage tanks etc.



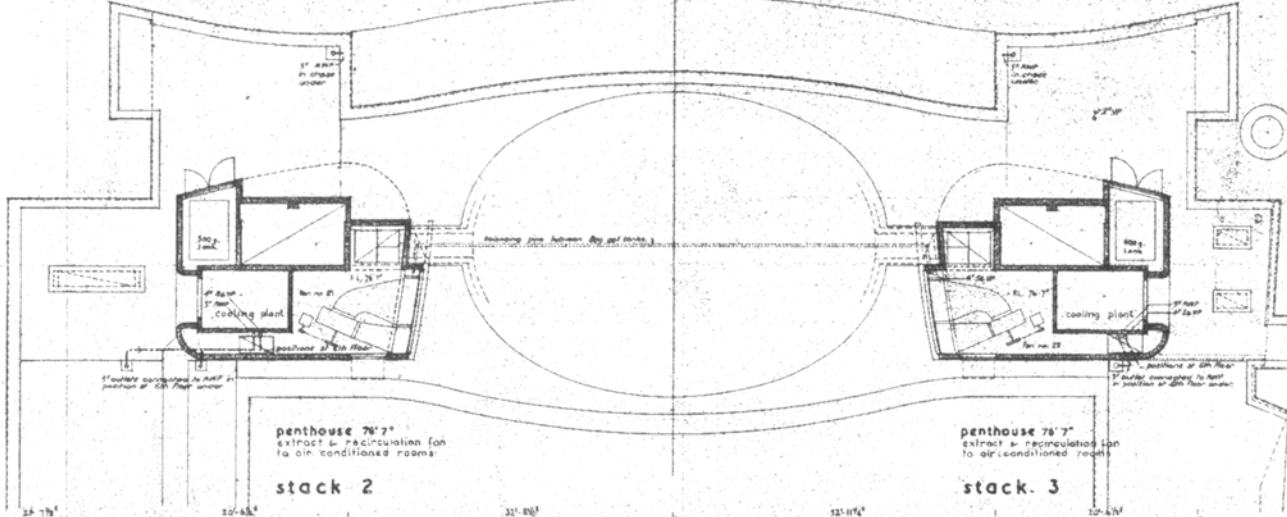
penthouse roof  
stack 3



penthouse roof

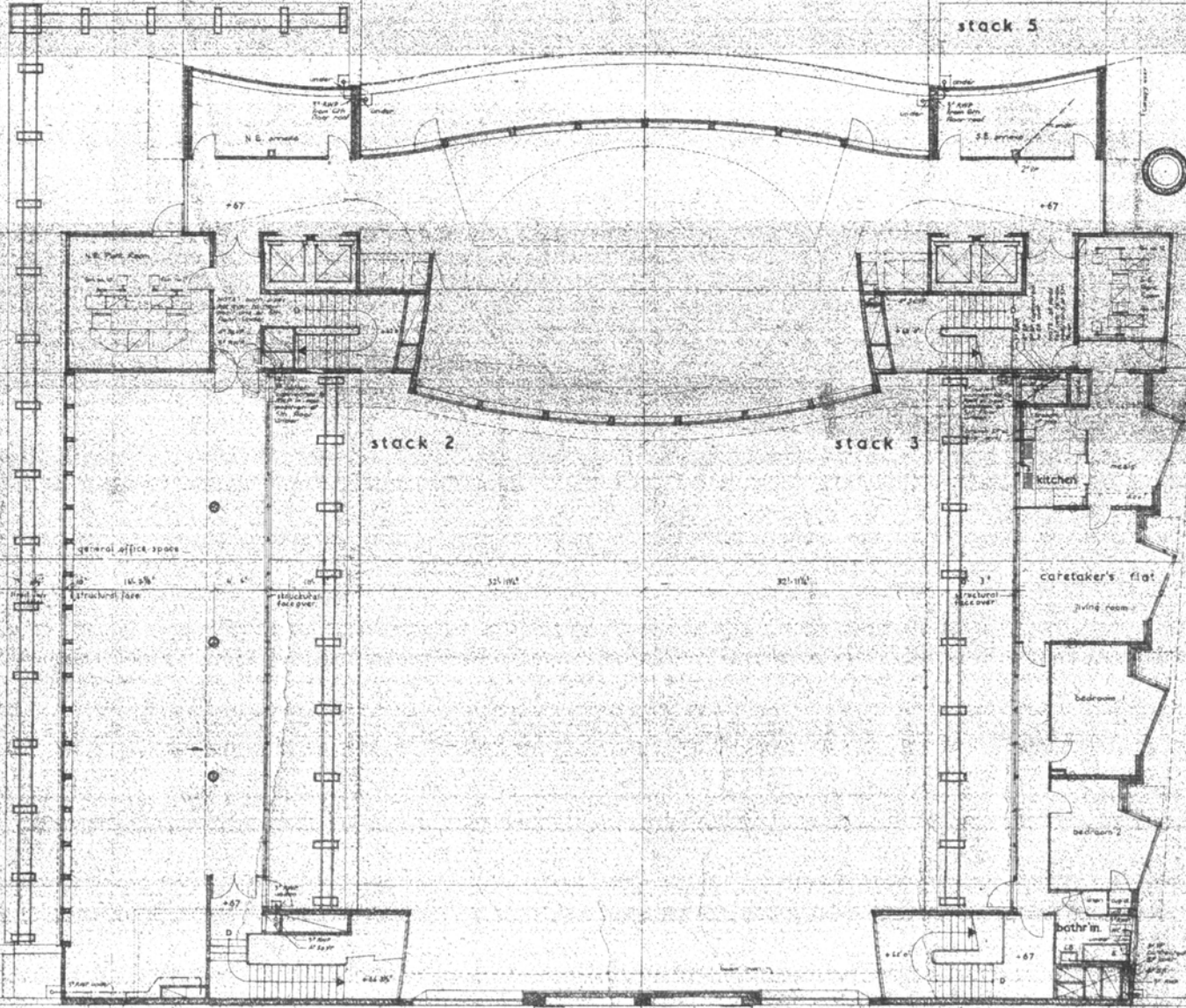


76' 21" penthouse  
corridor, sub-basement, lower  
sub-basement kitchen & house  
exit door



penthouse 76' 7"  
extract & recirculation fan  
to air conditioned rooms

penthouse 76' 7"  
extract & recirculation fan  
to air conditioned rooms



stack 1

stack 4

stack 4

**References:**

- Drainage plan, mechanical layout TUC/340
- Drainage, electrical, plumbing TUC/341-347
- General notes to fifth floor TUC/348
- Drainage section A-A TUC/350

**Notes:**

- For key to symbols and abbreviations used on this drawing see TUC/348
- All pipe dimensions shown refer to minimum internal diameter

**Materials:**

- reinforced concrete
- brickwork
- block

**Revisions:**

Rev. 1: 5.5.58 - Revisions of drawings 1, 2, 3, 4, 5, 6, 7, 8, 9, 10, 11, 12, 13, 14, 15, 16, 17, 18, 19, 20, 21, 22, 23, 24, 25, 26, 27, 28, 29, 30, 31, 32, 33, 34, 35, 36, 37, 38, 39, 40, 41, 42, 43, 44, 45, 46, 47, 48, 49, 50, 51, 52, 53, 54, 55, 56, 57, 58, 59, 60, 61, 62, 63, 64, 65, 66, 67, 68, 69, 70, 71, 72, 73, 74, 75, 76, 77, 78, 79, 80, 81, 82, 83, 84, 85, 86, 87, 88, 89, 90, 91, 92, 93, 94, 95, 96, 97, 98, 99, 100, 101, 102, 103, 104, 105, 106, 107, 108, 109, 110, 111, 112, 113, 114, 115, 116, 117, 118, 119, 120, 121, 122, 123, 124, 125, 126, 127, 128, 129, 130, 131, 132, 133, 134, 135, 136, 137, 138, 139, 140, 141, 142, 143, 144, 145, 146, 147, 148, 149, 150, 151, 152, 153, 154, 155, 156, 157, 158, 159, 160, 161, 162, 163, 164, 165, 166, 167, 168, 169, 170, 171, 172, 173, 174, 175, 176, 177, 178, 179, 180, 181, 182, 183, 184, 185, 186, 187, 188, 189, 190, 191, 192, 193, 194, 195, 196, 197, 198, 199, 200, 201, 202, 203, 204, 205, 206, 207, 208, 209, 210, 211, 212, 213, 214, 215, 216, 217, 218, 219, 220, 221, 222, 223, 224, 225, 226, 227, 228, 229, 230, 231, 232, 233, 234, 235, 236, 237, 238, 239, 240, 241, 242, 243, 244, 245, 246, 247, 248, 249, 250, 251, 252, 253, 254, 255, 256, 257, 258, 259, 260, 261, 262, 263, 264, 265, 266, 267, 268, 269, 270, 271, 272, 273, 274, 275, 276, 277, 278, 279, 280, 281, 282, 283, 284, 285, 286, 287, 288, 289, 290, 291, 292, 293, 294, 295, 296, 297, 298, 299, 300, 301, 302, 303, 304, 305, 306, 307, 308, 309, 310, 311, 312, 313, 314, 315, 316, 317, 318, 319, 320, 321, 322, 323, 324, 325, 326, 327, 328, 329, 330, 331, 332, 333, 334, 335, 336, 337, 338, 339, 340, 341, 342, 343, 344, 345, 346, 347, 348, 349, 350, 351, 352, 353, 354, 355, 356, 357, 358, 359, 360, 361, 362, 363, 364, 365, 366, 367, 368, 369, 370, 371, 372, 373, 374, 375, 376, 377, 378, 379, 380, 381, 382, 383, 384, 385, 386, 387, 388, 389, 390, 391, 392, 393, 394, 395, 396, 397, 398, 399, 400, 401, 402, 403, 404, 405, 406, 407, 408, 409, 410, 411, 412, 413, 414, 415, 416, 417, 418, 419, 420, 421, 422, 423, 424, 425, 426, 427, 428, 429, 430, 431, 432, 433, 434, 435, 436, 437, 438, 439, 440, 441, 442, 443, 444, 445, 446, 447, 448, 449, 450, 451, 452, 453, 454, 455, 456, 457, 458, 459, 460, 461, 462, 463, 464, 465, 466, 467, 468, 469, 470, 471, 472, 473, 474, 475, 476, 477, 478, 479, 480, 481, 482, 483, 484, 485, 486, 487, 488, 489, 490, 491, 492, 493, 494, 495, 496, 497, 498, 499, 500, 501, 502, 503, 504, 505, 506, 507, 508, 509, 510, 511, 512, 513, 514, 515, 516, 517, 518, 519, 520, 521, 522, 523, 524, 525, 526, 527, 528, 529, 530, 531, 532, 533, 534, 535, 536, 537, 538, 539, 540, 541, 542, 543, 544, 545, 546, 547, 548, 549, 550, 551, 552, 553, 554, 555, 556, 557, 558, 559, 560, 561, 562, 563, 564, 565, 566, 567, 568, 569, 570, 571, 572, 573, 574, 575, 576, 577, 578, 579, 580, 581, 582, 583, 584, 585, 586, 587, 588, 589, 590, 591, 592, 593, 594, 595, 596, 597, 598, 599, 600, 601, 602, 603, 604, 605, 606, 607, 608, 609, 610, 611, 612, 613, 614, 615, 616, 617, 618, 619, 620, 621, 622, 623, 624, 625, 626, 627, 628, 629, 630, 631, 632, 633, 634, 635, 636, 637, 638, 639, 640, 641, 642, 643, 644, 645, 646, 647, 648, 649, 650, 651, 652, 653, 654, 655, 656, 657, 658, 659, 660, 661, 662, 663, 664, 665, 666, 667, 668, 669, 670, 671, 672, 673, 674, 675, 676, 677, 678, 679, 680, 681, 682, 683, 684, 685, 686, 687, 688, 689, 690, 691, 692, 693, 694, 695, 696, 697, 698, 699, 700, 701, 702, 703, 704, 705, 706, 707, 708, 709, 710, 711, 712, 713, 714, 715, 716, 717, 718, 719, 720, 721, 722, 723, 724, 725, 726, 727, 728, 729, 730, 731, 732, 733, 734, 735, 736, 737, 738, 739, 740, 741, 742, 743, 744, 745, 746, 747, 748, 749, 750, 751, 752, 753, 754, 755, 756, 757, 758, 759, 760, 761, 762, 763, 764, 765, 766, 767, 768, 769, 770, 771, 772, 773, 774, 775, 776, 777, 778, 779, 780, 781, 782, 783, 784, 785, 786, 787, 788, 789, 790, 791, 792, 793, 794, 795, 796, 797, 798, 799, 800, 801, 802, 803, 804, 805, 806, 807, 808, 809, 810, 811, 812, 813, 814, 815, 816, 817, 818, 819, 820, 821, 822, 823, 824, 825, 826, 827, 828, 829, 830, 831, 832, 833, 834, 835, 836, 837, 838, 839, 840, 841, 842, 843, 844, 845, 846, 847, 848, 849, 850, 851, 852, 853, 854, 855, 856, 857, 858, 859, 860, 861, 862, 863, 864, 865, 866, 867, 868, 869, 870, 871, 872, 873, 874, 875, 876, 877, 878, 879, 880, 881, 882, 883, 884, 885, 886, 887, 888, 889, 890, 891, 892, 893, 894, 895, 896, 897, 898, 899, 900, 901, 902, 903, 904, 905, 906, 907, 908, 909, 910, 911, 912, 913, 914, 915, 916, 917, 918, 919, 920, 921, 922, 923, 924, 925, 926, 927, 928, 929, 930, 931, 932, 933, 934, 935, 936, 937, 938, 939, 940, 941, 942, 943, 944, 945, 946, 947, 948, 949, 950, 951, 952, 953, 954, 955, 956, 957, 958, 959, 960, 961, 962, 963, 964, 965, 966, 967, 968, 969, 970, 971, 972, 973, 974, 975, 976, 977, 978, 979, 980, 981, 982, 983, 984, 985, 986, 987, 988, 989, 990, 991, 992, 993, 994, 995, 996, 997, 998, 999, 1000

**TUC MEMORIAL BUILDING**  
GREAT RUSSELL STREET, HOLBORN

1/8" = 1' 0" drainage  
SIXTH FLOOR  
& ROOF PENTHOUSES

1:3:55

DAVID M. ARENDSEN  
ARCHITECT



Areas of Special Architectural and Historic Interest

- 4 Main Reception and Marble Hall
- 5 Entrance, Sculpture and Disabled Ramp
- 6 Memorial Wall

Dyott Street

Ramp from car park

Ramp to car park

4  
Marble Hall

Tenants Office

Tenants Office

TUC Office

TUC Office

Main Reception

Congress Centre Reception

Tenants Office

6

Bainbridge Street

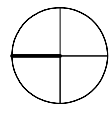
Great Russell Street

Key

- 1957 Original building fabric
- 1982 Core areas refurbished
- 1987 Extensive refurbishment
- 1996 New glass roof over Congress Hall, office toilet areas refurbished
- 1998 Construction of Invision conference facility and refurbishment of first floor offices
- 1999 Meeting rooms constructed to replace Canteen
- 2000 General Secretary's flat refurbished, conversion of 3rd and 4th floor to open plan
- 2001 Congress Hall and Foyer areas refurbished
- 2002 Conference facilities and main reception refurbished, fifth floor meeting rooms and toilets refurbished.
- 2003 General Secretary's Suite, Marble Hall, kitchen and toilet areas refurbished

Rev.	Date	By	Description
------	------	----	-------------

Drawing Status



Hugh Broughton Architects  
4 Addison Bridge Place, London W14 8XP  
Tel: 020-7602 8840 Fax: 020-7602 5254

Job Title

TUC - CONGRESS HOUSE  
GUIDELINES FOR  
MANAGEMENT

Appendices

Drawing Title

Ground Floor

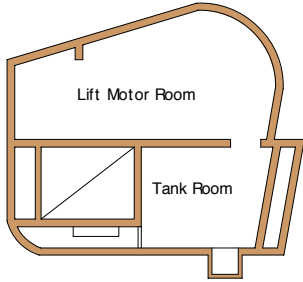
Existing

ARUP Ove Arup & Partners®  
13 Fitzroy Street, London W1P 6BD  
Tel: 02076361531 Fax: 02075803924

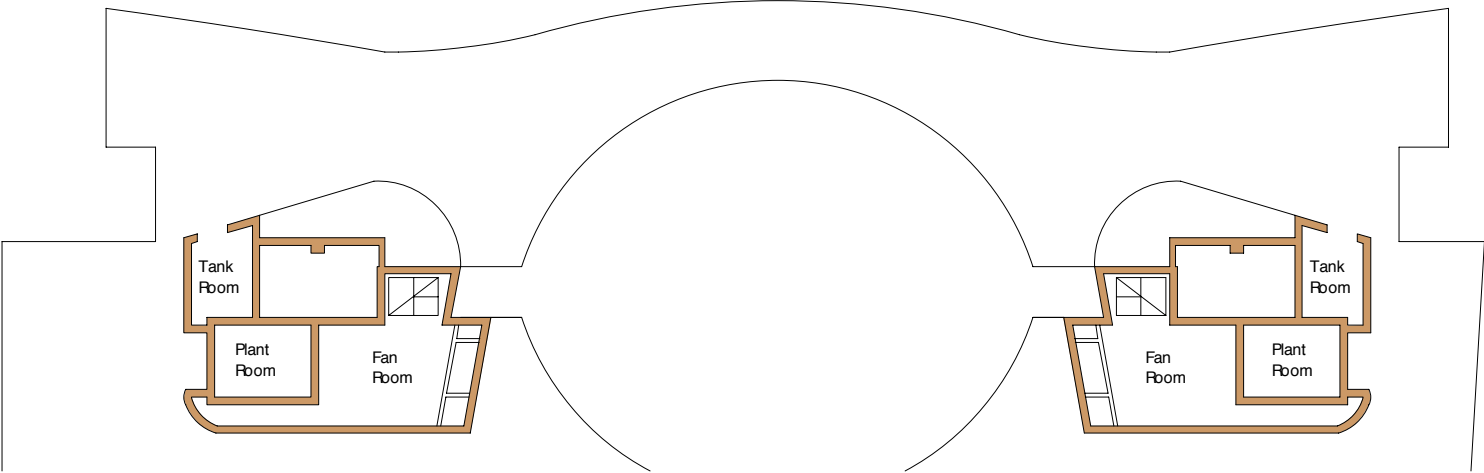
Scales 1:200 Originator HBA  
Checked Approved Date April 2002

Job No 69218 Drawing No. G Rev. -

5cm

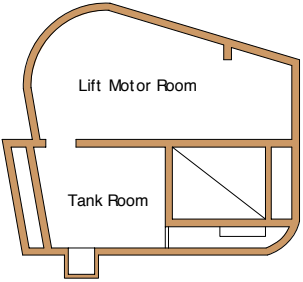


UPPER PENTHOUSE NORTH

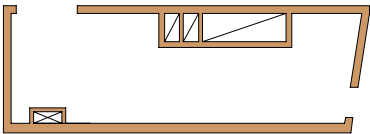
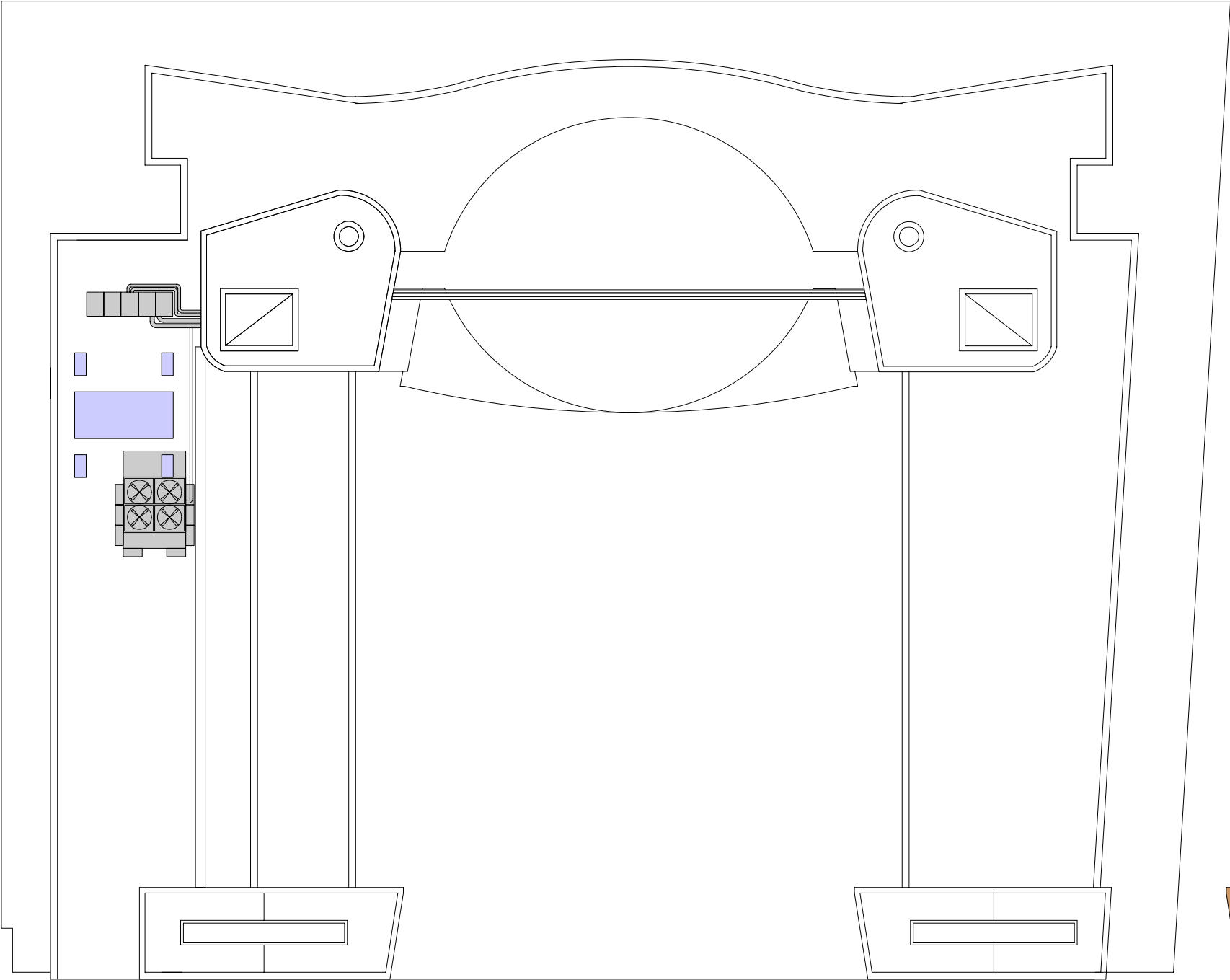


LOWER PENTHOUSE NORTH

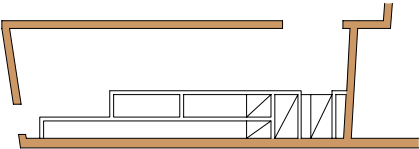
LOWER PENTHOUSE SOUTH



UPPER PENTHOUSE SOUTH



PENTHOUSE NORTH



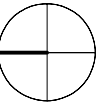
PENTHOUSE SOUTH

Key

- 1957 Original building fabric
- 1982 Core areas refurbished
- 1987 Extensive refurbishment
- 1996 New glass roof over Congress Hall, office toilet areas refurbished
- 1998 Construction of Invision conference facility and refurbishment of first floor offices
- 1999 Meeting rooms constructed to replace Canteen
- 2000 General Secretary's flat refurbished, conversion of 3rd and 4th floor to open plan
- 2001 Congress Hall and Foyer areas refurbished
- 2002 Conference facilities and main reception refurbished, fifth floor meeting rooms and toilets refurbished.
- 2003 General Secretary's suite refurbished, kitchen and toilet areas refurbished, comfort cooling system replaced.

Rev.	Date	By	Description

Drawing Status



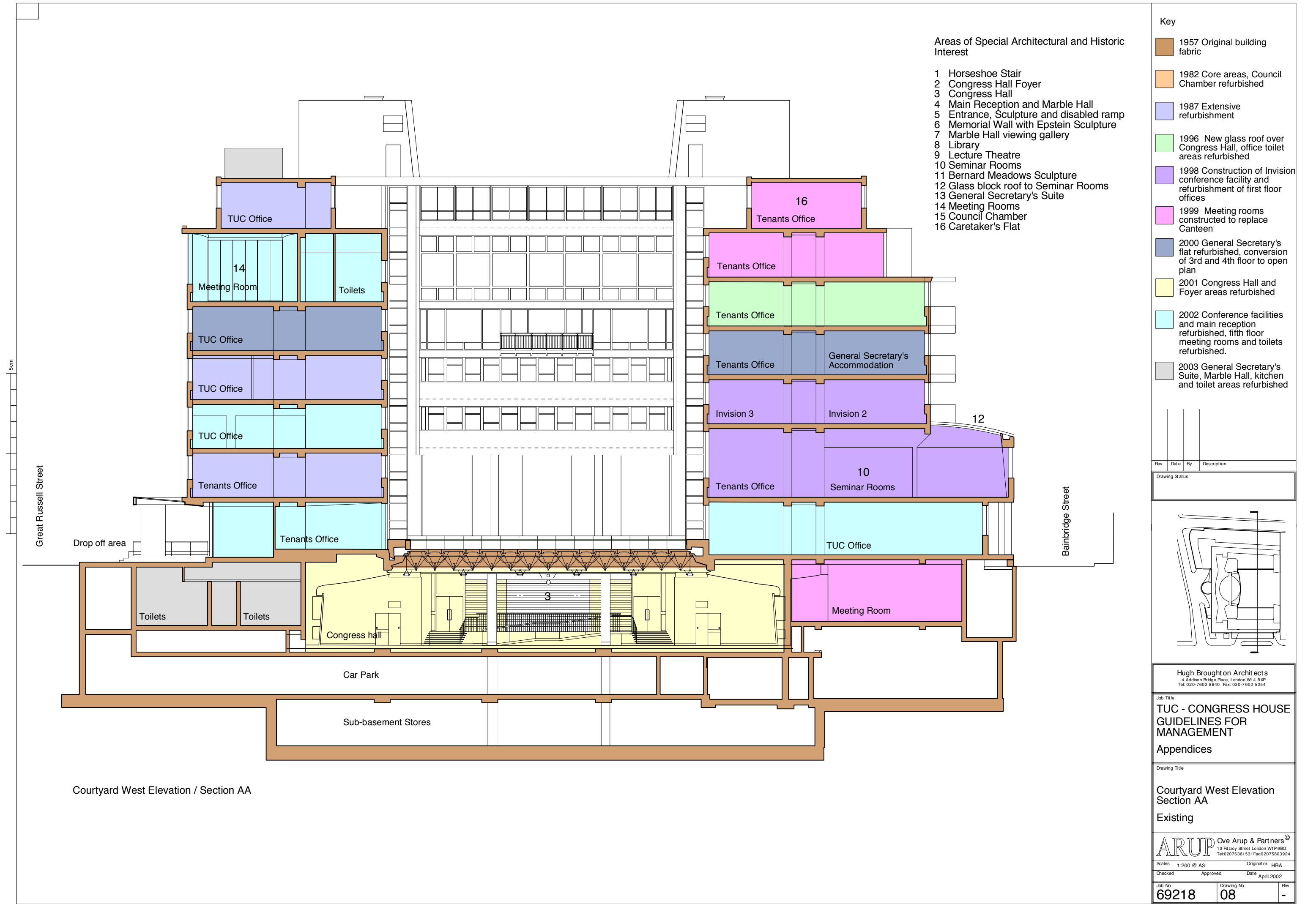
Hugh Broughton Architects  
4 Addison Bridge Place, London W14 8XP  
Tel: 020-7602 8840 Fax: 020-7 602 5254

Job Title  
**TUC - CONGRESS HOUSE  
GUIDELINES FOR  
MANAGEMENT**  
Appendices

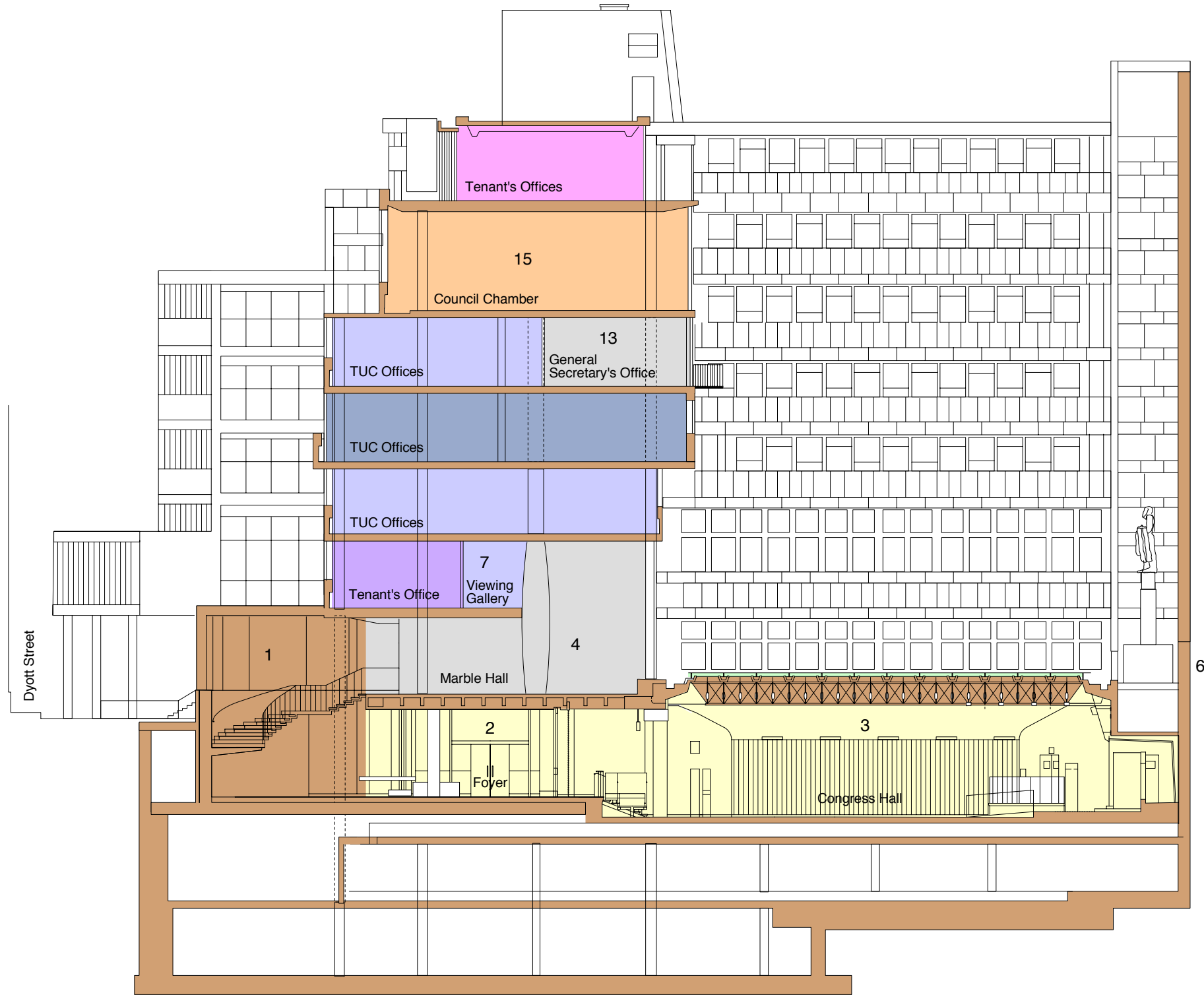
Drawing Title  
**Roof Plan**  
Existing

Scales 1:200 @ A3		Original or HBA
Checked	Approved	Date April 2002

Job No. <b>69218</b>	Drawing No. <b>07</b>	Rev. <b>-</b>
-------------------------	--------------------------	------------------



Courtyard West Elevation / Section AA



Courtyard North Elevation / Section BB

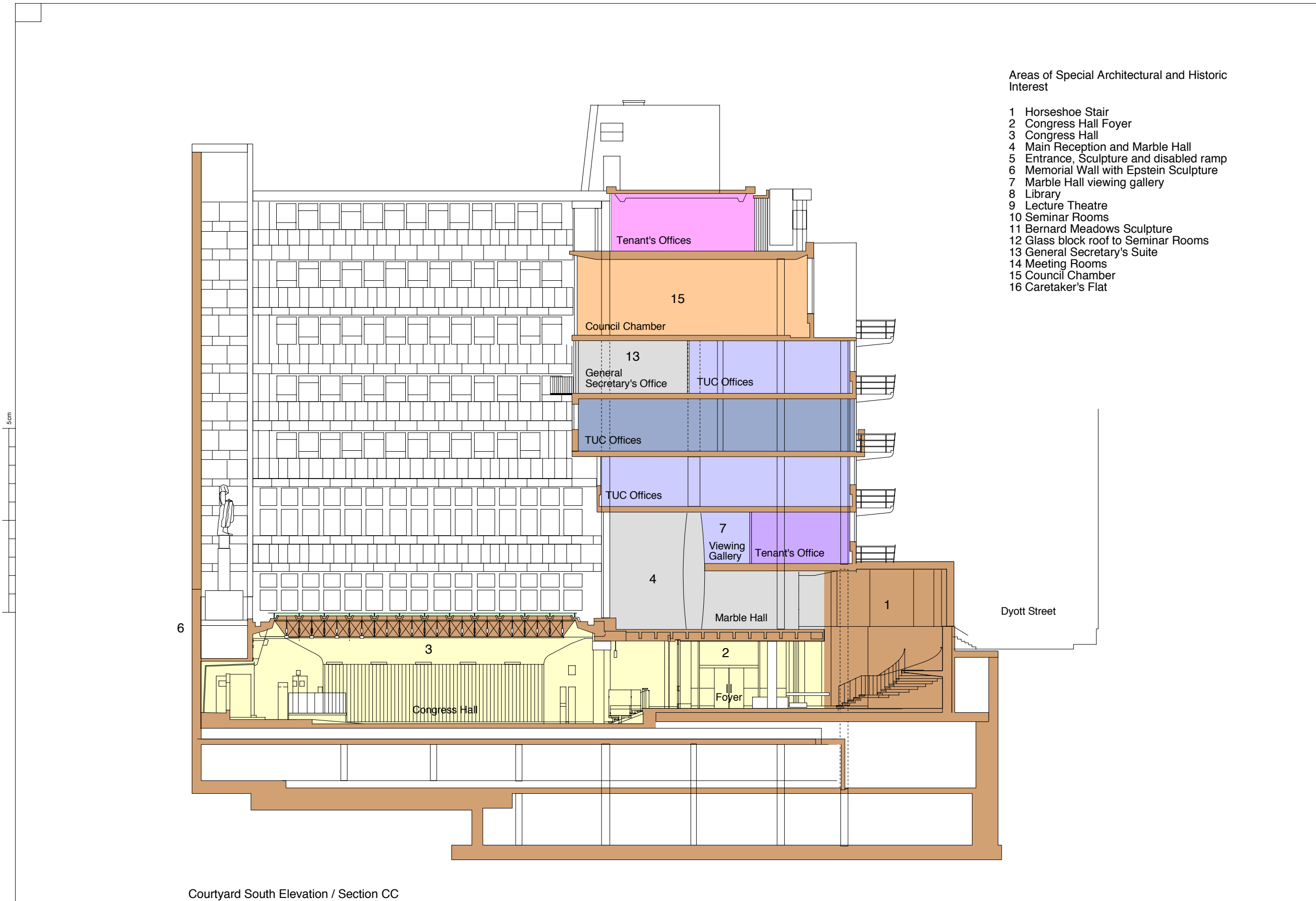
#### Areas of Special Architectural and Historic Interest

- 1 Horseshoe Stair
- 2 Congress Hall Foyer
- 3 Congress Hall
- 4 Main Reception and Marble Hall
- 5 Entrance, Sculpture and disabled ramp
- 6 Memorial Wall with Epstein Sculpture
- 7 Marble Hall viewing gallery
- 8 Library
- 9 Lecture Theatre
- 10 Seminar Rooms
- 11 Bernard Meadows Sculpture
- 12 Glass block roof to Seminar Rooms
- 13 General Secretary's Suite
- 14 Meeting Rooms
- 15 Council Chamber
- 16 Caretaker's Flat

#### Key

- 1957 Original building fabric
- 1982 Core areas, Council Chamber refurbished
- 1987 Extensive refurbishment
- 1996 New glass roof over Congress Hall, office toilet areas refurbished
- 1998 Construction of Invision conference facility and refurbishment of first floor offices
- 1999 Meeting rooms constructed to replace Canteen
- 2000 General Secretary's flat refurbished, conversion of 3rd and 4th floor to open plan
- 2001 Congress Hall and Foyer areas refurbished
- 2002 Conference facilities and main reception refurbished, fifth floor meeting rooms and toilets refurbished.
- 2003 General Secretary's Suite, Marble Hall, kitchen and toilet areas refurbished

Rev.	Date	By	Description
Drawing Status			
<b>Hugh Broughton Architects</b> 4 Addison Bridge Place, London W14 8XP Tel: 020-7602 8840 Fax: 020-7602 5254			
<b>Job Title</b> TUC - CONGRESS HOUSE GUIDELINES FOR MANAGEMENT Appendices			
<b>Drawing Title</b> Courtyard North Elevation Section BB Existing			
<b>ARUP</b> Ove Arup & Partners® 13 Fitzroy Street London W1P 6BD Tel: 02076361531 Fax: 02075803924			
Scales 1:200 @ A3		Original or HBA	
Checked	Approved	Date	April 2002
Job No.	Drawing No.	Rev.	
69218	09	-	



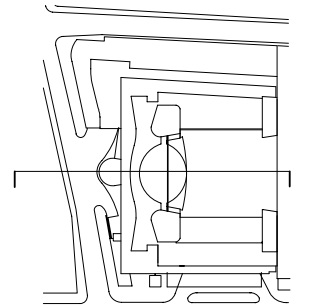
Courtyard South Elevation / Section CC

Areas of Special Architectural and Historic Interest

- 1 Horseshoe Stair
- 2 Congress Hall Foyer
- 3 Congress Hall
- 4 Main Reception and Marble Hall
- 5 Entrance, Sculpture and disabled ramp
- 6 Memorial Wall with Epstein Sculpture
- 7 Marble Hall viewing gallery
- 8 Library
- 9 Lecture Theatre
- 10 Seminar Rooms
- 11 Bernard Meadows Sculpture
- 12 Glass block roof to Seminar Rooms
- 13 General Secretary's Suite
- 14 Meeting Rooms
- 15 Council Chamber
- 16 Caretaker's Flat

- Key
- 1957 Original building fabric
  - 1982 Core areas, Council Chamber refurbished
  - 1987 Extensive refurbishment
  - 1996 New glass roof over Congress Hall, office toilet areas refurbished
  - 1998 Construction of Invision conference facility and refurbishment of first floor offices
  - 1999 Meeting rooms constructed to replace Canteen
  - 2000 General Secretary's flat refurbished, conversion of 3rd and 4th floor to open plan
  - 2001 Congress Hall and Foyer areas refurbished
  - 2002 Conference facilities and main reception refurbished, fifth floor meeting rooms and toilets refurbished.
  - 2003 General Secretary's Suite, Marble Hall, kitchen and toilet areas refurbished

Rev.	Date	By	Description
Drawing Status			



Hugh Broughton Architects  
4 Addison Bridge Place, London W14 8XP  
Tel: 020-7602 8840 Fax: 020-7602 5254

Job Title  
**TUC - CONGRESS HOUSE  
GUIDELINES FOR  
MANAGEMENT**  
Appendices

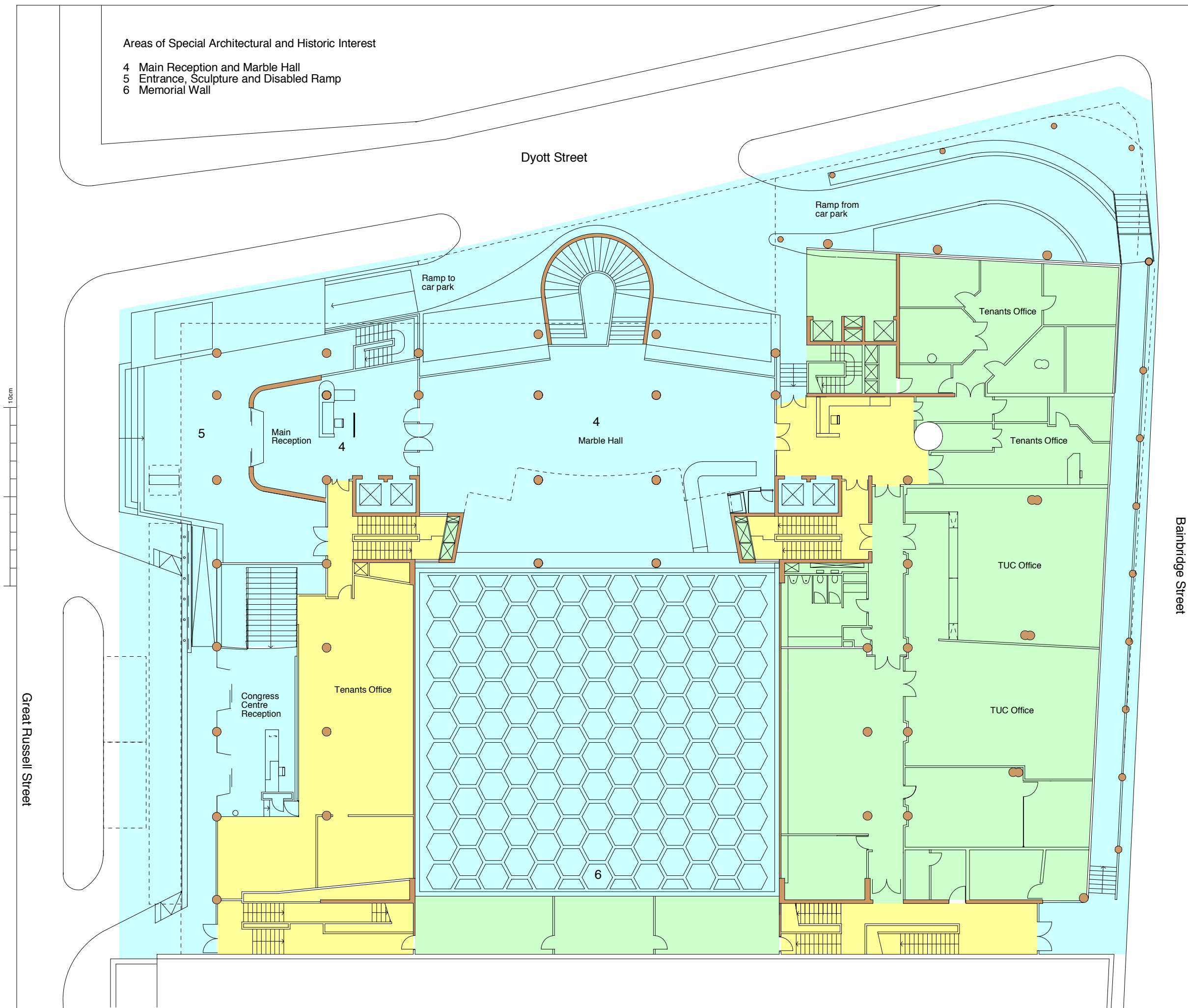
Drawing Title  
**Courtyard South Elevation  
Section CC**  
Existing

**ARUP** Ove Arup & Partners®  
13 Fitzroy Street London W1P 6BD  
Tel: 02076361551 Fax: 02075803924

Scales 1:200 @ A3 Originator HBA  
Checked Approved Date April 2002

Job No. Drawing No. Rev.  
**69218 10 -**





Areas of Special Architectural and Historic Interest

- 4 Main Reception and Marble Hall
- 5 Entrance, Sculpture and Disabled Ramp
- 6 Memorial Wall

Key

**3.1 Areas of low architectural and historic significance**  
Internal alterations in these areas will not need listed building consent if the design guidelines prescribed in section 4.1 are followed.

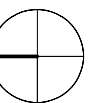
**3.2 Areas of moderate special architectural and historic interest**  
Internal alterations in these areas will affect the special architectural and historic interest of the building and will therefore need listed building consent and, where the guidelines are followed, are likely to receive it.

**3.3 Areas of high special architectural and historic interest**  
Alterations will affect the special architectural interest of the building. In order to gain Listed Building Consent, it will be necessary to provide full design details for the proposals and fully justify the practical need for any alterations to these areas

**3.4 Areas of very high special architectural and historic interest**  
Any alteration in these areas will not be permitted as they would have a significant impact on the special architectural and historic interest of the building.

Rev.	Date	By	Description
------	------	----	-------------

Drawing Status



Hugh Broughton Architects  
4 Addison Bridge Place, London W14 8XP  
Tel: 020-7602 8840 Fax: 020-7602 5254

Job Title  
**TUC - CONGRESS HOUSE  
GUIDELINES FOR  
MANAGEMENT  
Section 3**

Drawing Title  
**Ground Floor**

**Analysis of Special  
Architectural & Historic  
Interest**

**ARUP** Ove Arup & Partners®  
13 Fitzroy Street London W1P 6BQ  
Tel: 02076361531 Fax: 02075803924

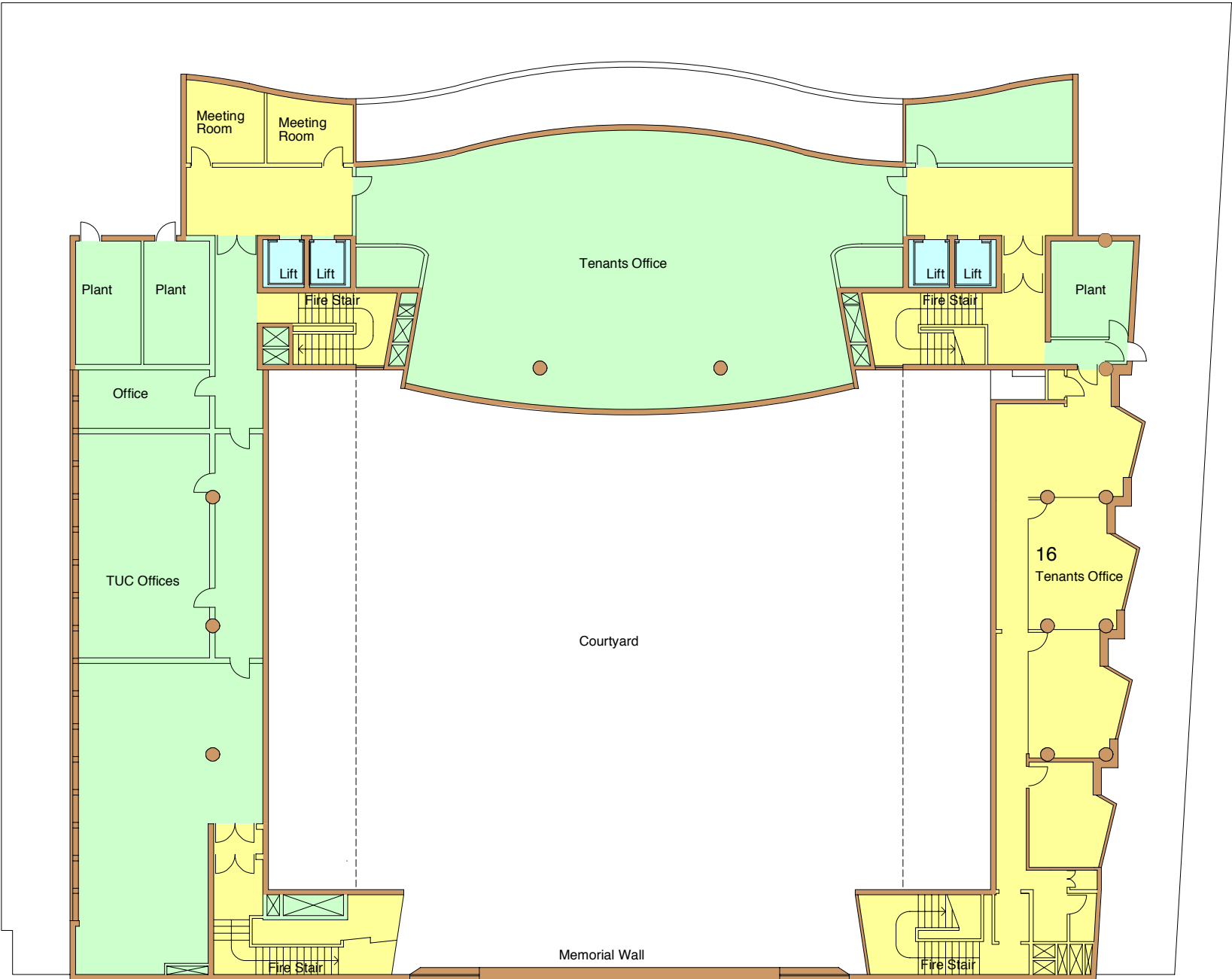
Scales 1:200 Original or HBA

Checked Approved Date April 2002

Job No. 69218 Drawing No. G Rev. -

Areas of Special Architectural and Historic Interest

16 Caretakers Flat



Key



**3.1 Areas of low architectural and historic significance**  
Internal alterations in these areas will not need listed building consent if the design guidelines prescribed in section 4.1 are followed.



**3.2 Areas of moderate special architectural and historic interest**  
Internal alterations in these areas will affect the special architectural and historic interest of the building and will therefore need listed building consent and, where the guidelines are followed, are likely to receive it.



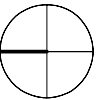
**3.3 Areas of high special architectural and historic interest**  
Alterations will affect the special architectural interest of the building. In order to gain Listed Building Consent, it will be necessary to provide full design details for the proposals and fully justify the practical need for any alterations to these areas



**3.4 Areas of very high special architectural and historic interest**  
Any alteration in these areas will not be permitted as they would have a significant impact on the special architectural and historic interest of the building.

Rev.	Date	By	Description

Drawing Status



Hugh Broughton Architects  
4 Addison Bridge Place, London W14 8XP  
Tel: 020-7602 8840 Fax: 020-7602 5254

Job Title

**TUC - CONGRESS HOUSE  
GUIDELINES FOR  
MANAGEMENT**

**Section 3**

Drawing Title

**Sixth Floor  
Analysis of Special  
Architectural & Historic  
Interest**

**ARUP** Ove Arup & Partners®  
13 Fitzroy Street London W1P 6BQ  
Tel: 0207 6361 531 Fax: 0207 5803924

Checked	Approved	Date	Originator	HBA

Job No.	Drawing No.	Rev.
69218	06	-



