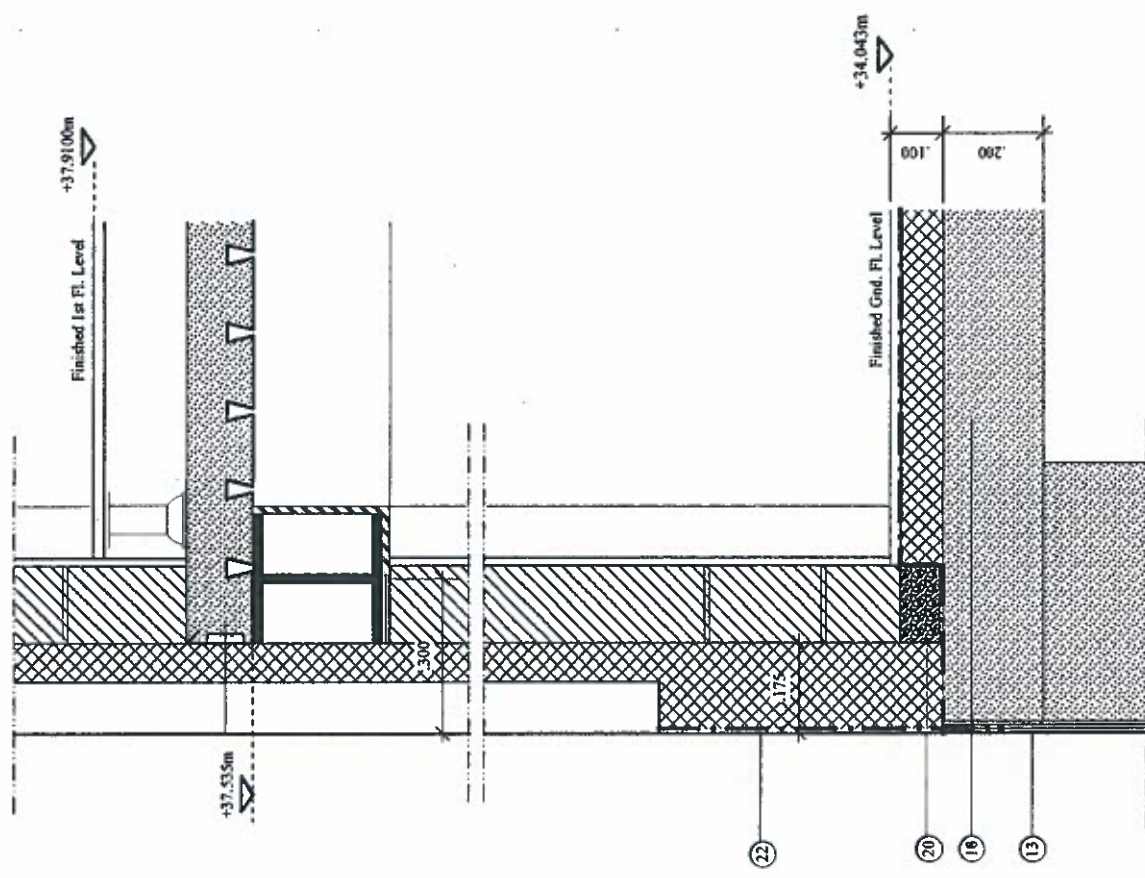


NOTES:

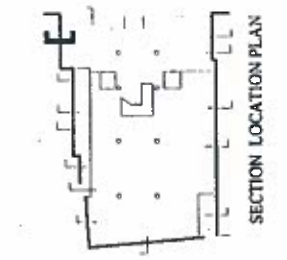
- 150mm WALL CAVITY IS VARIABLE TO SUIT LOCAL CONDITIONS. CONTRACTOR TO CHECK PLUMB OF PARTY WALLS BEFORE ERECTING STEELWORK.
- ALL DIMENSIONS TO BE CHECKED ON SITE BY CONTRACTOR.
- REFER TO STRUCTURAL ENGINEERS' DRAWINGS FOR DETAILS OF FOUNDATIONS AND ALL STEELWORK DETAILS.
- DIRECT CONNECTION MUST BE MADE BETWEEN STEEL FRAME AND PARTY WALL AT DECCA RECORDS TO PROVIDE LATERAL SUPPORT TO PARTY WALL. MUST ALLOW FOR PUSH - PULL HORIZONTAL MOVEMENT CONNECTION BUT NOT VERTICAL MOVEMENT. TO BE PROVIDED AT ALL LEVELS.



**SPECIFICATION LEGEND:**

1. 75mm thick Styrofoam Wall Insulation with Approved Stainless SteelMechanical fixings at 300mm ctrs, vertically and 600mm ctrs, horizontally.
2. 150mm thick Blockwork
3. 12.5mm Plasterboard
4. 254 x 254mm Main Steel 'I' Section Beam. REFER TO STRUCTURAL ENGINEERS DRAWINGS FOR FULL DETAILS
5. 20mm thick Fire Protection to column. Steelwork as shown for min. 2 hr. FR. All details to be agreed with District Surveyor
6. Steel Angle edge Trim fixed to Steel decking. Downfall sloss behind edge trim and cast into concrete floor. Max. spacing 450mm ctrs. Gabr. steel tie designed for tension and compression.
7. Soft Expansion Joint to allow beam to deflect
8. 125mm deep In-Situ Reinforced Concrete floor slab with anti-crack reinforcement mesh on 51mm deep Super Holomb gabr. Steel permanent shoring. By Richard Lees Ltd.
9. Pre-Cast White Concrete Coping Stone, twice weathered, on Samofill dressed over mild DPC Support over Blockwork and Steel angle. Samofill G410-12EL to all exposed Flashings. Heat welded at all side and end laps.
10. ROOF CONSTRUCTION:  
 - Samofill G476-20 Polymeric Roofing fully adhered. Heat welded at all side and end laps.  
 - 50mm thick Expanded Polystyrene Insulation on  
 - Heavy Duty High Performance Vapour Barrier. (Reinforced Aluminium foil lined Binousseau Felk.). Bedded in hot Bitumen. Screen laid to fall 1:40 min.
11. Flexible Expansion Joint between party wall and concrete beam
12. Extg. Party Wall at 256 Belsize Rd. (Decca Records)
13. 20mm thick Hydrocell Tanking System with 1.5mm Swelthite 1000 to inner face. By Booth Engineering Services
14. 300mm wide x 70mm deep Box Gutter formed from Insulation set to fall min. 1:30 towards RWP
15. In-Situ Reinforced concrete around Steel I Section Beam as support to Outer Brick Skin.

16. Code 5 lead flashings dressed over new treated Pre-cast White Concrete Coping Stone laid on lead-cored DPC on top of new parapet detail to 256 Belsize Rd. Lead flashing to be turned up face of new brickwork and covered to min depth of 150mm by contoured lead flashing in Code 5 lead dressed into new brick wall. Note: setting mastic to joint brown main and upstand leadwork.
17. New Brickwork outer skin at Upper Floor level:  
 - Stainless steel wall tie fixed back to blockwork @max. 900mm horizontally and @ max. 450mm vertically. Must have effective drip.  
 - Weep holes in Brickwork string immediately above all window heads and Cavity trays/covers.
18. GROUND FLOOR CONSTRUCTION (to achieve U value through Floor of 0.45m<sup>2</sup>K/W):  
 - Finished Floor Covering on proprietary Raised Floor system on  
 - 8mm thick Floor Grade Chipboard on  
 - Bituthene Damp Proof Membrane on  
 - 80mm Foamglas Floorboard Insulation on  
 - 200mm thick Reinforced Concrete Ground Floor Slab suspended on 500mm deep Conc. Ground Beams (Ref: Structural Engineers Drawings).
19. Cavity Tray and Flashings. TO BE STEPPED TO MATCH SLOPING TOP TO PARTY WALL WHERE REQD.
20. FoamGlas 'PERISUL' Perimeter Insulation board laid under blockwork.
21. UB Section approx. 403mm x 178mm to allow for continuity of insulation within cavity. REFER TO STRUCTURAL ENGINEERS DRAWINGS FOR FULL DETAILS.
22. Bituthene Damp Proof Membrane lapped down behind Hydrocell tanking and also up Party Wall surface approx 600mm.
23. Stainless steel lateral restraint to be fixed to party wall. REFER TO STRUCTURAL ENGINEERS DRAWINGS FOR FULL DETAILS



SECTION LOCATION PLAN

REV 'A' FEBRUARY 1994

1. Junction with extg party wall at third floor revised.
2. Flashing details revised

*[Handwritten signature]*



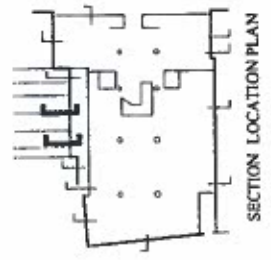
alan power (ARCHITECTS)

Studio 1, The Pigeon's Nest, 11-17 Pinner Road, London, W11 4EQ. 011 235 9375 Fax: 011 231 4172

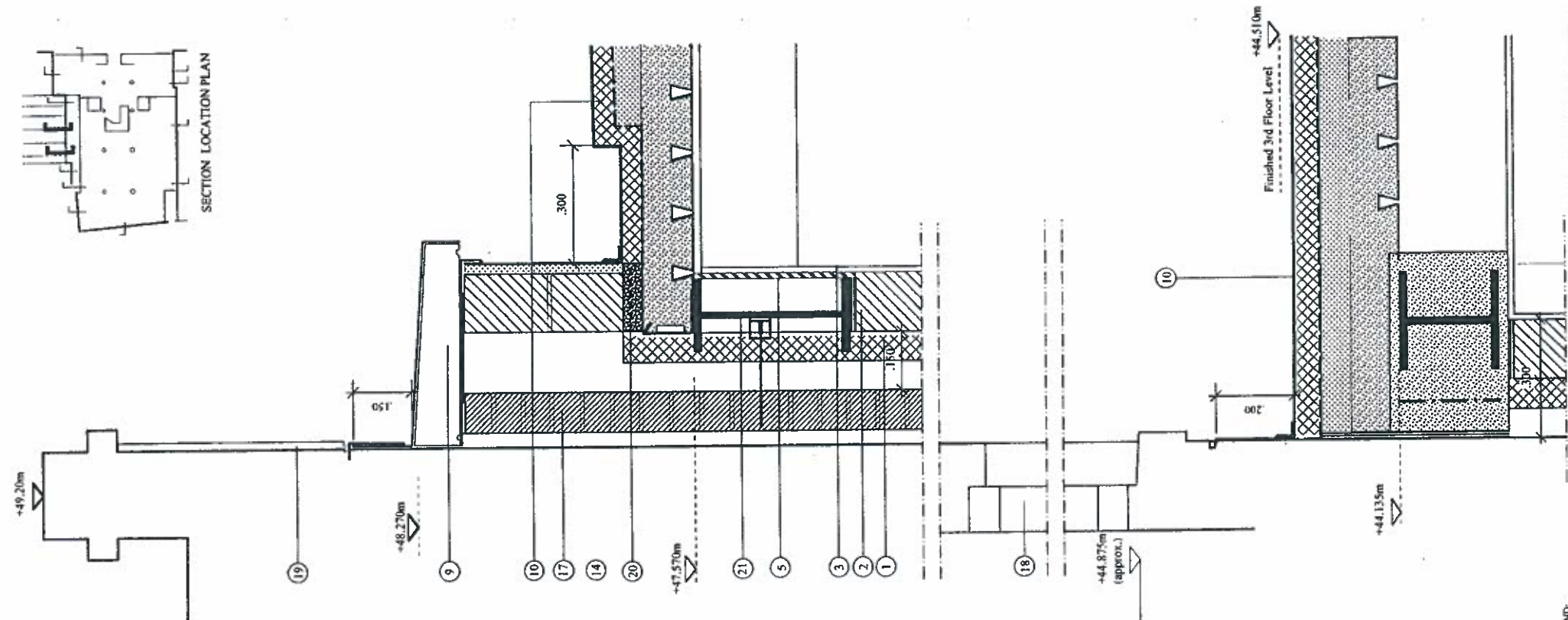
DRAWING PARTY WALL DETAILS AT FRONT OF DECCA BLDG.		DRWG. N <sup>o</sup> .
PROJECT	258-262 BELSIZE ROAD, LONDON, NW6.	259/D.101A
CLIENT	CASTLE TRADING LTD.	Rev.
		Scale 1:10
		Date DECEMBER 93
		Drawn

DO NOT SCALE FROM THIS DRAWING. ALL DIMENSIONS TO BE CHECKED ON SITE



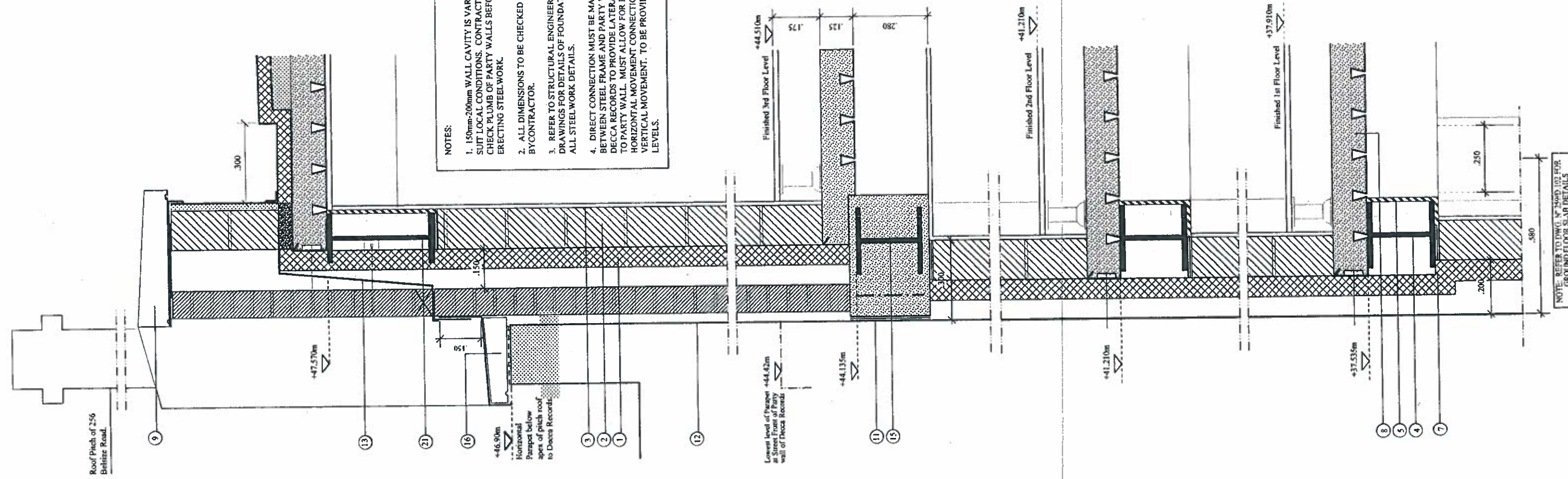


SECTION LOCATION PLAN



**NOTES:**

1. 150mm-200mm WALL CAVITY IS VARIABLE TO SUIT LOCAL CONDITIONS. CONTRACTOR TO CHECK PLUMB OF PARTY WALLS BEFORE ERECTING STEELWORK.
2. ALL DIMENSIONS TO BE CHECKED ON SITE BY CONTRACTOR.
3. REFER TO STRUCTURAL ENGINEERS DRAWINGS FOR DETAILS OF FOUNDATIONS AND ALL STEELWORK DETAILS.
4. DIRECT CONNECTION MUST BE MADE BETWEEN STEEL FRAME AND PARTY WALL AT DECCA RECORDS TO PROVIDE LATERAL SUPPORT TO PARTY WALL. MUST ALLOW FOR PUSH - PULL HORIZONTAL MOVEMENT CONNECTION BUT NOT VERTICAL MOVEMENT. TO BE PROVIDED AT ALL LEVELS.



**SPECIFICATION LEGEND:**

1. 75mm thick FoamGlas Wall Board Insulation, with Appointed Stainless SteelMechanical fixings at 300mm ctrs. vertically and 600mm cts. horizontally.
2. 150mm thick Brickwork
3. 12.5mm Plasterboard
4. 254 x 254mm Made Steel T Section Beam. REFER TO STRUCTURAL ENGINEERS DRAWINGS FOR FULL DETAILS
5. 20mm thick Fire Protection to column. Steelwork as shown for min. 2 hr. FR. All details to be agreed with District Surveyor
6. Steel Angle edge Trim fixed to Steel deck. Dowel/ails behind edge trim cast into concrete floor. Max. spacing 450mm ctrs. Gable steel ties for tension and compression.
7. Soft Expansion foam to allow beam to deflect
8. 125mm deep In-Situ Reinforced Concrete floor slab with anti-crack reinforcement mesh on 5.0mm deep Super Helorb gals. Steel perimeter slanting. By Richard Leco Ltd
9. Pre-Cast White Concrete Coping Stone, twice weathered, on Samoil dressed over rigid DPC Support over Brickwork and Steel angle. Code 5 lead flashing overcoping taken up partywall and approx. 150mm with lead downcast flashing (details as item 16)
10. ROOF CONSTRUCTION: Samoil Roofing fully adhered on insulation on screed to falls. All details as dwgs nos. 2597D.101 & 12
11. Flexible Expansion Joint between party wall and concrete encased beam
12. Exig. Party Wall at 256 Belzize Rd. (Decca Records)
13. Cavity Tray and Chaser at ridge line of Party Wall becomes Stepped Cavity Chaser at junction of rising Ridge line at Party wall with Decca Records.
14. 300mm wide x 70mm deep Box Cover formed from insulation set to fall min. 1.80 towards RWP
15. In-Situ Reinforced concrete around main Steel I Section Beam to act as support to Outer Brick Skin.
16. Code 5 lead flashings dressed over new treated Pre-cast White Concrete Coping Stone laid on lead-cast DPC on top of new parapet detail to 256 Belzize Rd. Lead flashing to be turned up face of new brickwork and covered to min depth of 150mm by even downcast flashing in Code 5 lead dressed into new brick wall. New setting to joint from main and upcast finish.
17. New Brickwork over skin at Upper Floor level:
  - Stainless steel wall ties fixed back to brickwork @ max. 900mm horizontally and @ max. 450mm vertically. Must have effective drip.
  - Weep holes in Brickwork string immediately above all window leads and Cavity trays/covers.
18. Exig. window at attic level to 256 Belzize Rd. to be retained.
19. White Concrete Render to irregular section of party wall above new parapet level.
20. FoamGlas PERISUL Partitioner Insulation board laid under brickwork.
21. UB Section approx. 403mm x 178mm to allow for continuity of insulation within cavity. REFER TO STRUCTURAL ENGINEERS DRAWINGS FOR FULL DETAILS.

REV 'A' March 1994. Items 9, 16 & 18 revised



alan power (ARCHITECTS.)

Studio 7, The Peoples Hall, 91-93 Finsbury Road, London, W11 4DB. 071 259 9375 Fax: 071 251 4172

DRAWING	DRWG. N°
PARTY WALL DETAILS AT CTR. DECCA BLDG.	259/D.103
PROJECT	Rev. A
258 - 262 BELZIZE ROAD, LONDON, NW6.	Scale 1:10
CLIENT	Date December '93
CASTLE TRADING LTD.	Drawn

*J.K. Walker*